

## PRINCESS 85MY



BROKERAGE

### SPECIFICATIONS

Localisation	Turkey
Année	2011
Longueur	25.93 m
Largeur	6.3 m
Tirant d'eau	1.65 m
Déplacement	70 tonnes
Capacité en carburant	8400 l

Contenance en eau douce	1500 l
Cabines	4+2
Moteurs	2 x Caterpillar C32 ACERT
Puissance max	2 x 1925 hp hp
Prix	2 300 000 € (ex VAT)

## EQUIPMENT

Light Oak interior wood Satin finish

Continental 220v/240v sockets

Two Onan 27 Kw generators as standard

In place of standard hydraulic bowthruster & winch system - Fit 'FIN' type digital stabiliser system & sternthruster

Built to standard specification with MCA full compliance (including full set of the safety equipment)

Freshwater maker (160 litre/hour)

Stainless steel anchors in place of the standard

Side entry gates to aft port & starboard side decks in addition to standard passerelle

Fitting of the extra Engine room insulation

Chain counter on upper and lower help positions

Optional enclosed galley layout

Master Stateroom to have full length sofa in place of table and corner seats

Fitting of the more powerful anchor windlass

Optional pullman berth (in port and/or starboard cabin)

Fitting of the SatTVsystem KVH TracVision M9

Fit Loewe 40" Individual comp 1014x597x124 BLK/ALU in saloon

Fit 32" Loewe Individual selection in Master cabin

Fit 22" Loewe connect series TV in Starboard cabin

Fit 22" Loewe Connect series TV in port cabin

Fit 26" Loewe connect series TV in Forward cabin

KVH satphone (TrackPhone V7 with M9 dome)

Satellite TV receivers in all cabins, crew area and saloon (6)

Fit wi-fi router & RJ45 sockets in all cabins and saloon

Fit Bang & Olufsen BeoCom 5 phones connected to satphone

Hydraulically powered white bimini with illumination & remote control

Cancellation of the ladder leading from saloon to flybrige and fit sofa to the flybrige

Fit electric hob with extractor in crew area

Supply and fit glendinning shore support

Fit dishwasher Miele

Fit washer/dryer Miele in place of standard BOSH

Fit microwave oven Miele in place of standard

Fit Sat compass Furuno SC-50

Additional 12.1" (3D-MFD12) multifunctional display at upper helm position

Second additional 12.1" (3D-MFD12) multifunctional display at upper helm position

Additional 12.1" (3D-MFD12) multifunctional display at crew area

Fit Furuno navtex

Fit Furuno ARP11

Fit Furuno ULTRASONIC wind system + RD-30 in lower helm

Fitting of the forward looking echo sounder on upper and lower helm

Yacht remote controller

Fitting of the AIS

Underwater transom lights (4) switched independently

Large oval mosquito screens for Master Stateroom x 2

Fit mirrors on bulkhead of the dining area

Wall lamps in saloon MWL/01-China White - Single Arm Chrome & Leather Wall Light H.190mm

Table lamps in salon SLB/07-China White - Leather Lamp H.460-760mm

Wall lamps in Master-cabin - TWL/22-1-Samburu Black, African Head Wall Light, H.180mm, with 9" Slim Oval Taupe silk shade, H.310mm

Wall lamps in VIP-cabin - TWL/10-2-Silver, Organic Loop Wall Light, H.390mm, with 4" Empire Truffle silk shades, H.550mm

Wall lamps in STBD cabin - TWL/15-Brass, Nicolas Wall Light, H.450mm, with 14" Semi Cylinder Putty silk shade, H.600mm

Wall lamps in PORT cabin - TWL/04-2-Ebony, Cross Arm Wall Light, H.220mm, with 4" Cylinder Putty silk shades, H.370mm

Fit heated towel rail in all cabins bathroom except dayhed

All covers are white

Wooden blinds LIGHT OAK fitted in all bathrooms

Wooden blinds CHERY fitted in PORT and STBD cabins in place of standard

Zipped wallet for cockpit cover

Fit Wenge on the floor in crew area in place of standard

Fit Primasuede IVORY to the cells in saloon and dining area

Fit Primasuede to passageways, Master, Forward, PORT and STBD cabins wall panels in place of standard fabric

Fitting of the not standard mosaic to bathrooms

Additional white lightening through the boat including all stairs in cockpit

Fit lighting name of the boat

Wooden blinds LIGHT OAK in galley in place of standard aluminum

Wooden blinds DARK WALNUT in fitted in forward VIP cabin

Williams 445 Jet Tender

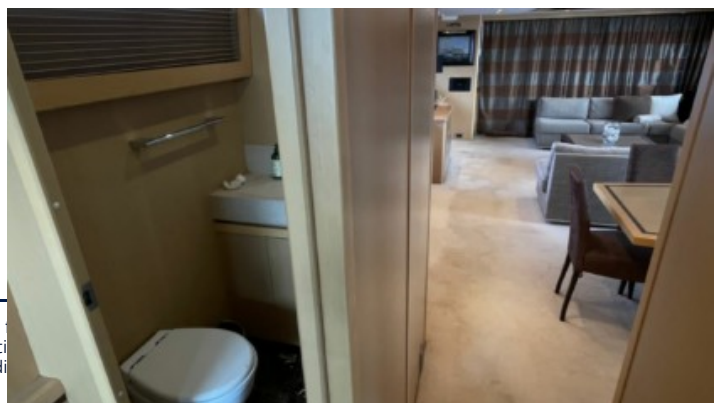
Fit wine cooler: Compact wine cooler



## EXTERIOR



Yachts on the commission of Princess Yacht Monaco. The Company is not responsible for the accuracy of the information provided by the Shipowner (images used, yacht specifications, parameters, engine performance, legal design issues). The operating time of the engines is indicated at the time of preparation of the information and may change during further operation. The need for an inspection remains at the discretion of the Buyer. Exact parameters and characteristics can be specified in the contract of sale. Additional information is available from the manager on request.



ble  
erati  
e di



ble  
erati  
e di



