

PRINCESS 85MY



BROKERAGE

SPECIFICATIONS

Posizione	Turkey
Anno	2011
Lunghezza	25.93 m
Larghezza	6.3 m
Pescaggio	1.65 m
Peso	70 tonnes
Capacità carburante	8400 l

Capacità acqua	1500 l
Cabine	4+2
Motorizzazione	2 x Caterpillar C32 ACERT
Max potenza	2 x 1925 hp hp
Prezzo	2 300 000 € (ex VAT)

EQUIPMENT

Light Oak interior wood Satin finish
Continental 220v/240v sockets
Two Onan 27 Kw generators as standard
In place of standard hydraulic bowthruster & winch system – Fit 'FIN' type digital stabiliser system & sternthruster
Built to standard specification with MCA full compliance (including full set of the safety equipment)
Freshwater maker (160 litre/hour)
Stainless steel anchors in place of the standard
Side entry gates to aft port & starboard side decks in addition to standard passerelle
Fitting of the extra Engine room insulation
Chain counter on upper and lower help positions
Optional enclosed galley layout
Master Stateroom to have full length sofa in place of table and corner seats
Fitting of the more powerful anchor windlass
Optional pullman berth (in port and/or starboard cabin)
Fitting of the SatTVsystem KVH TracVision M9
Fit Loewe 40” Individual comp 1014x597x124 BLK/ALU in saloon
Fit 32” Loewe Individual selection in Master cabin
Fit 22” Loewe connect series TV in Starboard cabin
Fit 22” Loewe Connect series TV in port cabin
Fit 26” Loewe connect series TV in Forward cabin
KVH satphone (TrackPhone V7 with M9 dome)
Satellite TV receivers in all cabins, crew area and saloon (6)
Fit wi-fi router & RJ45 sockets in all cabins and saloon
Fit Bang & Olufsen BeoCom 5 phones connected to satphone
Hydraulically powered white bimini with illumination & remote control
Cancellation of the ladder leading from saloon to flybrige and fit sofa to the flybrige
Fit electric hob with extractor in crew area
Supply and fit glendinning shore support
Fit dishwasher Miele
Fit washer/dryer Miele in place of standard BOSH
Fit microwave oven Miele in place of standard
Fit Sat compass Furuno SC-50
Additional 12.1” (3D-MFD12) multifunctional display at upper helm position
Second additional 12.1” (3D-MFD12) multifunctional display at upper helm position

Additional 12.1” (3D-MFD12) multifunctional display at crew area
Fit Furuno navtex
Fit Furuno ARP11
Fit Furuno ULTRASONIC wind system + RD-30 in lower helm
Fitting of the forward looking echo sounder on upper and lower helm
Yacht remote controller
Fitting of the AIS
Underwater transom lights (4) switched independently
Large oval mosquito screens for Master Stateroom x 2
Fit mirrors on bulkhead of the dining area
Wall lamps in saloon MWL/01-China White – Single Arm Chrome & Leather Wall Light H.190mm
Table lamps in salon SLB/07-China White – Leather Lamp H.460-760mm
Wall lamps in Master-cabin – TWL/22-1-Samburu Black, African Head Wall Light, H.180mm, with 9” Slim Oval Taupe silk shade, H.310mm
Wall lamps in VIP-cabin – TWL/10-2-Silver, Organic Loop Wall Light, H.390mm, with 4” Empire Truffle silk shades, H.550mm
Wall lamps in STBD cabin – TWL/15-Brass, Nicolas Wall Light, H.450mm, with 14” Semi Cylinder Putty silk shade, H.600mm
Wall lamps in PORT cabin – TWL/04-2-Ebony, Cross Arm Wall Light, H.220mm, with 4” Cylinder Putty silk shades, H.370mm
Fit heated towel rail in all cabins bathroom except dayhed
All covers are white
Wooden blinds LIGHT OAK fitted in all bathrooms
Wooden blinds CHERY fitted in PORT and STBD cabins in place of standard
Zipped wallet for cockpit cower
Fit Wenge on the floor in crew area in place of standard
Fit Primasuede IVORY to the cells in saloon and dining area
Fit Primasuede to passageways, Master, Forward, PORT and STBD cabins wall panels in place of standard fabric
Fitting of the not standard mosaic to bathrooms
Additional white lightening through the boat including all stairs in cockpit
Fit lighting name of the boat
Wooden blinds LIGHT OAK in galley in place of standard aluminum
Wooden blinds DARK WALNUT in fitted in forward VIP cabin
Williams 445 Jet Tender
Fit wine cooler: Compact wine cooler

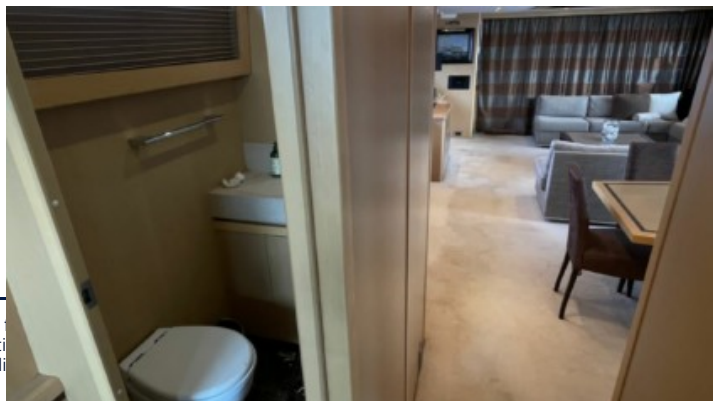
Fit safes VALBERG ASM – 25 CL in place of standard

Supply 1 x set of dive equipment

EXTERIOR



Yachts on the commission of Princess Yacht Monaco. The Company is not responsible for the accuracy of the information provided by the Shipowner (images used, yacht specifications, parameters, engine performance, legal design issues). The operating time of the engines is indicated at the time of preparation of the information and may change during further operation. The need for an inspection remains at the discretion of the Buyer. Exact parameters and characteristics can be specified in the contract of sale. Additional information is available from the manager on request.





ble
erati
ne di



