

## PRINCESS F58



### SPECIFICATIONS

Posizione	After request	Capacità acqua	630 l
Anno	2023	Cabine	3
Lunghezza	18.2 m	Berths	6
Larghezza	4.90 m	Motorizzazione	MAN V8
Pescaggio	1.54 m	Max potenza	2 x 1000 hp
Peso	78 tonnes	Velocità	31 +
Capacità carburante	3300 l	Prezzo	Prezzo alla richiesta

EQUIPMENT

DECK FITTINGS

Teak-laid transom platform, transom steps, cockpit deck, flybridge stairway and steps to side deck

Reversible electric anchor winch with foredeck and main helm controls

Stemhead roller with automatic anchor launch and retrieve

Self-stowing anchor system incorporating one 32kg galvanised Lewmar Delta anchor with 40m of 9.5mm galvanised anchor chain

Deck hatch access to chain locker - 2 lockers forward

Stainless steel fairleads, with chafing plates (1 pair)

Stainless steel bow, stern and spring cleats, with chafing plates (4 pairs)

Stainless steel pulpit and guard rails

PVC rubbing band with stainless steel insert

LED deck level lighting

Illuminated crown logo on transom

Full set of IMO navigation lights

Riding light

Searchlight with remote controls

Loudhailer (connected to VHF)

Twin electric horns

Ensign socket

Fuel and water fillers (one per side)

Black water holding tank dockside discharge connection

Foredeck escape hatch

Foredeck seating area with fender storage and drink holders (2)

Foredeck sunbathing area incorporating fixed twin sunpads with integrated storage and drink holders (4)

Foredeck sunpad covers

Portside fender storage locker

Teak-laid transom platform, transom steps, cockpit deck, flybridge stairway and steps to side deck

Reversible electric anchor winch with foredeck and main helm controls

Stemhead roller with automatic anchor launch and retrieve

Self-stowing anchor system incorporating one 32kg galvanised Lewmar Delta anchor with 40m of 9.5mm galvanised anchor chain

Deck hatch access to chain locker - 2 lockers forward

Stainless steel fairleads, with chafing plates (1 pair)

Stainless steel bow, stern and spring cleats, with chafing plates (4 pairs)

Stainless steel pulpit and guard rails

PVC rubbing band with stainless steel insert

LED deck level lighting

Illuminated crown logo on transom

Full set of IMO navigation lights

Riding light

Searchlight with remote controls

Loudhailer (connected to VHF)

Twin electric horns

Ensign socket

Fuel and water fillers (one per side)

Black water holding tank dockside discharge connection

Foredeck escape hatch

Foredeck seating area with fender storage and drink holders (2)

Foredeck sunbathing area incorporating fixed twin sunpads with integrated storage and drink holders (4)

Foredeck sunpad covers

Portside fender storage locker

COCKPIT AND BATHING PLATFORM

Self-draining

Fixed bathing platform

Upholstered U-shaped seating

Folding teak dining table with cup holders (4)

Stainless steel handrails

LED overhead and deck level lighting

Integral stairway to flybridge with teak-laid step treads

LED lighting to step faces

Life raft storage locker under flybridge stairs

Rope storage

Lockable gas strut assisted hatch to lazarette/engine room

Locker containing remote fuel cocks, manual bilge pump with valve chest and manual controls for automatic fire extinguishers

Transom top locker

Twin transom gates leading to bathing platform

Hot and cold flatwash transom shower

220/240v shore support inlet

Cockpit cover

Self-draining

Fixed bathing platform

Upholstered U-shaped seating

Folding teak dining table with cup holders (4)
Stainless steel handrails
LED overhead and deck level lighting
Integral stairway to flybridge with teak-laid step treads
LED lighting to step faces
Life raft storage locker under flybridge stairs
Rope storage
Lockable gas strut assisted hatch to lazarette/engine room
Locker containing remote fuel cocks, manual bilge pump with valve chest and manual controls for automatic fire extinguishers
Transom top locker
Twin transom gates leading to bathing platform
Hot and cold flatwash transom shower
220/240v shore support inlet
Cockpit cover

LOWER HELM

Twin leather upholstered manual seat with fore and aft adjustment for helmsman
Instrument console with controls incorporating engine instruments and fuel gauges
Dual station instrument and controls console at lower helm
<div><div></div><div><ul style="list-style-type: none"><li>- 16" colour MFD incorporating GPS/chartplotter, log, echo-sounder</li><li>- 9" MFD screen displaying engine instrumentation (including fuel levels and fuel flow)</li><li>- Power-assisted electro-hydraulic steering</li><li>- Adjustable steering wheel</li><li>- High-speed magnetic compass</li><li>- Electronic engine controls</li><li>- Trim tab controls with indicators</li><li>- Bow thruster control</li><li>- Electric anchor winch remote control</li><li>- Autopilot</li><li>- Speed and distance log</li><li>- Echo sounder with alarm</li><li>- VHF with DSC R/T with intercom</li><li>- Remote control searchlight</li><li>- Horn button (to operate twin electric horns)</li><li>- Audible and visual alarm engine warning system</li><li>- Audible and visual alarm for bilge pumps</li><li>- Engine room fire extinguisher warning system</li><li>- Footrest</li></ul></div></div>
Drink holders (3)
Electric drop window (starboard)
Toughened glass screen (clear for night vision)
Windscreen wipers with freshwater windscreen wash
Glove box to portside dash

Exterior black mesh windscreen covers
Bilge pump controls with visual pump running warnings
24v and 240v electrical control panel
Riding light, helm and navigation light control switches
USB charging points (2) (USB-A and USB-C)
LED overhead lighting (24v) and night lighting
Fitted carpet

FLYBRIDGE

Dual station instrumentation and controls (see Lower Helm Position)
Power assisted electro-hydraulic steering with adjustable steering wheel
Wind deflector screens
Twin manual helm seats with fore and aft adjustment for helmsman
Audible and visual alarm for bilge pumps
Engine room fire extinguisher warning system
Clear view hatch to aft cockpit
Access stairway to aft cockpit
Stainless steel handrails
Stainless steel handrail around flybridge hatch
Top loading cool box in navigators pedestal moulding
Small U-shaped seat (starboard), with conversion to sunpad
U-shaped upholstered seating area (starboard)
Drink holders (8)
Folding teak table with drink holders (4)
Servery with sink, storage, electric barbecue and bin
Fusion MS-SRX400 audio system, paired with Fusion Signature 7.7" waterproof speakers (2)
LED deck level lighting
USB-A charging points (2)
GRP radar arch
Twin matching whip aerials for VHF R/T and radio
Covers to console and exterior furniture where appropriate
DECK SALOON
U-shaped sofa (port) with storage drawers below
Coffee table
Electric drop window (port)
Crockery storage drawer
Sideboard unit with bottle and glass storage and refrigerator
50" LED TV on rise and fall

Fusion MS-RA770 audio system, paired with Focal 100 ICW6 speakers (2)

Panoramic tinted toughened glass windows port and starboard

Manual Venetian blinds to all windows

LED overhead and concealed lighting (24v)

Access stairway to lower accommodation

Fitted carpet

U-shaped sofa (port) with storage drawers below

Coffee table

Electric drop window (port)

Crockery storage drawer

Sideboard unit with bottle and glass storage and refrigerator

50” LED TV on rise and fall

Fusion MS-RA770 audio system, paired with Focal 100 ICW6 speakers (2)

Panoramic tinted toughened glass windows port and starboard

Manual Venetian blinds to all windows

LED overhead and concealed lighting (24v)

Access stairway to lower accommodation

Fitted carpet

DINING AREA

L-shape sofa to starboard

Folding dining table

Stainless steel framed sliding door to cockpit. Three panes with integrated hinging window aft of galley (one fixed pane, two sliding panes, one flip up window)

220/240v power outlets (1)

USB charging points (2) (USB-A and USB-C)

LED overhead and concealed (24v)

Manual Venetian blinds to windows

Manual blind to door

Fitted carpet

GALLEY

Galley counter top is Solid Surface in White (satin finish)

4-zone ceramic hob

Hob extractor fan

Twin top lockers

Combination microwave/convection oven with grill

Full height fridge/freezer (270l)

Sink is stainless steel with mixer tap

Waste bin

Drawers and storage cupboards

Corner galley storage bin (top loading) with work top lid

220/240v power outlets (4)

Manual Venetian blinds to windows

Timber-laid flooring (V-groove planked)

ACCOMODATION

All cabins and bathrooms feature opening portholes

All cabins feature 220/240v power points and USB charging points

All bathrooms feature electric freshwater toilets and 240v shaver points OWNER'S STATEROOM

Large double bed with bedside tables and drawers below

Two-seater sofa to port, with cupboard storage

Walk-in wardrobe to starboard with shelves and mirror

Sideboard unit to starboard

Pull out mirror to vanity draw in sideboard unit

Fusion Apollo MS-RA670 audio system paired with Focal 100 ICW6 speakers (2)

Panoramic windows including opening portholes

Manual Venetian blinds to all windows

LED overhead and concealed lighting (24v)

Individual berth lights

220/240v outlets (2)

USB charging points (4) (2x USB-A and 2x USB-C)

Fitted carpet

EN-SUITE BATHROOM

Solid Surface vanity top and thermoformed sink

Mirror with medicine cabinet unit

Storage lockers

Shower compartment with automatic pump out

Extractor fan

Window with opening porthole

Manual Venetian blind to window

LED overhead and concealed lighting (24v)

Bathroom accessories (toilet roll holder, toilet brush and holder, soap dispenser, toothbrush tumbler and robe hooks)

Solid Surface flooring

FORWARD CABIN

Large double bed with drawers below

Half height mirror above sideliner, with storage behind (port)

Wardrobe with shelves and mirror

Top lockers

Windows with opening portholes

Manual Venetian blind to all windows
Deck escape hatch
LED overhead and concealed lighting (24v)
Individual berth lights
220/240v outlets (2)
USB charging points (4) – two per side (2x USB-A and 2x USB-C)
Fitted carpet
Large double bed with drawers below
Half height mirror above sideliner, with storage behind (port)
Wardrobe with shelves and mirror
Top lockers
Windows with opening portholes
Manual Venetian blind to all windows
Deck escape hatch
LED overhead and concealed lighting (24v)
Individual berth lights
220/240v outlets (2)
USB charging points (4) – two per side (2x USB-A and 2x USB-C)
Fitted carpet

**EN-SUITE BATHROOM/DAY HEAD**

Accessible from both the lobby/passage way and forward cabin
Solid Surface vanity top and thermoformed sink
Mirror with storage
Storage lockers
Shower compartment with automatic pump out
Extractor fan
Window with opening porthole
Manual Venetian blind to window
LED overhead and concealed lighting (24v)
Bathroom accessories (toilet roll holder, toilet brush and holder, soap dispenser, toothbrush tumbler and robe hooks)
Solid Surface flooring

**STARBOARD GUEST CABIN**

Two single beds with drawers below
Bedside table
Wardrobe with shelves and mirror
Top lockers
Window with opening portholes
Manual Venetian blind to window
LED overhead and concealed lighting (24v)
Individual berth lights

220/240v outlet (1)
USB charging points (2) (USB-A and USB-C)
Fitted carpet

**LOWER LOBBY / PASSAGEWAY AREA**

Storage for detergent and laundry equipment
Under-stair storage locker
Double height storage locker
LED overhead lighting (24v)

**POWER AND DRIVE SYSTEMS**

Propeller shafts in Marinemet
5-bladed propellers in nickel aluminium bronze
Bow thruster 170kgF with dual-station controls
High speed balanced rudders
Power-assisted steering system
Trim tabs with indicators
Cathodic protection for sterngear
Sterngear, engines, fuel tank fillers, etc all electrically bonded
Forward and aft engine room bulkheads and engine room headlining to be integrally bonded including insulation with acoustafoam layers
High volume air intakes
Engine room extractor fan with electronic time delay
Engine exhaust silencers and water-cooled exhausts
Engine beds integrally moulded with hull for strength and vibration absorption
Engines flexibly mounted
Automatic fire extinguisher with remote override control
Automatic and manual bilge pumps
Engine room lighting
Engine room access hatch and ladder
Electronic engine and gear shift controls
Fresh water supply point in engine room
Dripless self-aligning shaft seals
Propeller shafts in Marinemet
5-bladed propellers in nickel aluminium bronze
Bow thruster 170kgF with dual-station controls
High speed balanced rudders
Power-assisted steering system
Trim tabs with indicators
Cathodic protection for sterngear
Sterngear, engines, fuel tank fillers, etc all electrically bonded



Forward and aft engine room bulkheads and engine room headlining to be integrally bonded including insulation with acoustafoam layers

High volume air intakes

Engine room extractor fan with electronic time delay

Engine exhaust silencers and water-cooled exhausts

Engine beds integrally moulded with hull for strength and vibration absorption

Engines flexibly mounted

Automatic fire extinguisher with remote override control

Automatic and manual bilge pumps

Engine room lighting

Engine room access hatch and ladder

Electronic engine and gear shift controls

Fresh water supply point in engine room

Dripless self-aligning shaft seals

Propeller shafts in Marinemet

5-bladed propellers in nickel aluminium bronze

Bow thruster 170kgF with dual-station controls

High speed balanced rudders

Power-assisted steering system

Trim tabs with indicators

Cathodic protection for sterngear

Sterngear, engines, fuel tank fillers, etc all electrically bonded

Forward and aft engine room bulkheads and engine room headlining to be integrally bonded including insulation with acoustafoam layers

High volume air intakes

Engine room extractor fan with electronic time delay

Engine exhaust silencers and water-cooled exhausts

Engine beds integrally moulded with hull for strength and vibration absorption

Engines flexibly mounted

Automatic fire extinguisher with remote override control

Automatic and manual bilge pumps

Engine room lighting

Engine room access hatch and ladder

Electronic engine and gear shift controls

Fresh water supply point in engine room

Dripless self-aligning shaft seals

ELECTRICAL SYSTEMS

24 Volt:

4 x heavy duty batteries for engine starting

4 x heavy duty auxiliary batteries

Battery link facility with remote control at helm position

Both battery banks are charged using a voltage sensitive relay that parallels both battery banks when a charging source is present

60-amp 24v float battery charger

Remote battery isolator control switches at main switch panel position

Circuit breakers on all circuits

12v voltage dropper/converters for certain navigation and radio circuits

Princess Connect telemetry and maintenance system

220/240 Volt:

European specification: 11kW @ 50Hz diesel generator, in own sound shields, water cooled and with specially silenced exhaust systems and with remote operation from main control panel

USA specification: 11.5kW @ 60Hz diesel generator in own sound shields, water cooled and with specially silenced exhaust systems and with remote operation from main control panel

Automatic fire extinguisher situated in engine room

Shore power/generator change over control operated from main control panel

Polarity check system

Earth leakage safety trip

Circuit breakers on all circuits

All cabins feature 220/240v power points and USB charging points

All bathrooms feature electric freshwater toilets and 240v shaver points

FUEL SYSTEM

Twin fuel tanks in NS8 marine grade alloy with interconnection system 726 gal / 872 US gal / 3300 l capacity

Fuel fillers to port and starboard decks

High capacity duplex fuel filters/water traps with integral changeover valves

Water warning sensors connected to warning lights at main helm position

Remote fuel isolation controls in cockpit locker for main engines and generator

Fuel gauges displayed on MFDs at both helm consoles

Twin fuel tanks in NS8 marine grade alloy with interconnection system 726 gal / 872 US gal / 3300 l capacity

Fuel fillers to port and starboard decks

High capacity duplex fuel filters/water traps with integral changeover valves

Water warning sensors connected to warning lights at main helm position

Remote fuel isolation controls in cockpit locker for main engines and generator

Fuel gauges displayed on MFDs at both helm consoles

WATER SYSTEM

Water tanks giving a water capacity (excl. calorifier) of 139 gal / 166 US gal / 630 l capacity plus 73 litres hot water calorifier

Water heated by engines and 3kW immersion heater

Automatic water pump with filter

Main circuit breaker at main switch panel

Water level gauge

Deck filler

Electric quiet flush toilet system linked to 69 gal / 83 US gal / 315 l black water tank, content gauge and manual overboard discharge, with macerator backup system as well as dockside discharge system

Water tanks giving a water capacity (excl. calorifier) of 139 gal / 166 US gal / 630 l capacity plus 73 litres hot water calorifier

Water heated by engines and 3kW immersion heater

Automatic water pump with filter

Main circuit breaker at main switch panel

Water level gauge

Deck filler

Electric quiet flush toilet system linked to 69 gal / 83 US gal / 315 l black water tank, content gauge and manual overboard discharge, with macerator backup system as well as dockside discharge system

BILGE PUMPS

Automatic/manual override electric bilge pumps in engine room (2), lazarette (2) and forward accommodation (6 in total)

High capacity manual bilge system with valve system and suction points in the same areas

Electric bilge pumps have controls and warning lights at main helm with audible alarm at flybridge helm

EXTINGUISHERS / FIRE CONTROL SYSTEMS

Automatic engine room fire extinguisher system (with manual override) and warning system at main and flybridge helm positions providing automatic shutdown of engines, generators and ventilation fans

Automatic fire extinguisher system under main helm

Hand operated fire extinguishers (5) in owner’s stateroom, forward and starboard guest cabin, galley and main helm position  
Automatic engine room fire extinguisher system (with manual override) and warning system at main and flybridge helm positions providing automatic shutdown of engines, generators and ventilation fans

Automatic fire extinguisher system under main helm

Hand operated fire extinguishers (5) in owner’s stateroom, forward and starboard guest cabin, galley and main helm position

Additional extinguisher fitted when optional crew cabin is specified

OTHER STANDARD EQUIPMENT

Ensign staff

Fenders (6)

Mooring warps (4)

Tool kit

Boat hook

Anchor winch back up handle

First Aid kit

Bed covers supplied to all cabins (except optional crew cabin)

Owner’s manual and engine manual

Ship’s document case

FINISHES

Teak-laid transom platform, transom steps, cockpit deck, flybridge stairway and steps to side deck

Timber-laid flooring (V-groove planked) to galley

Furniture in Rovere oak satin finish as standard (Silver oak satin finish, Ash satin finish or Walnut in satin or gloss finish available as an option)

Solid Surface floors in all bathroom suites in guest accommodation

Solid Surface wash basin vanity tops in all bathroom suites in guest accommodation

Galley counter top in Solid Surface

Exterior upholstery in white vinyl as standard, with optional upgrade to Comfort Exterior available

Choice of high-quality carpets and upholstery fabrics from extensive range

Manual blinds to all windows and portholes (except crew porthole)

Optional crew cabin to have furniture in specified boat timber with fitted carpet. Crew bathrooms have Solid Surface vanity tops and GRP floors with tracking

Teak-laid transom platform, transom steps, cockpit deck, flybridge stairway and steps to side deck

Timber-laid flooring (V-groove planked) to galley

Furniture in Rovere oak satin finish as standard (Silver oak satin finish, Ash satin finish or Walnut in satin or gloss finish available as an option)

Solid Surface floors in all bathroom suites in guest accommodation

Solid Surface wash basin vanity tops in all bathroom suites in guest accommodation

Galley counter top in Solid Surface

Exterior upholstery in white vinyl as standard, with optional upgrade to Comfort Exterior available

---

Choice of high-quality carpets and upholstery fabrics from extensive range

---

Manual blinds to all windows and portholes (except crew porthole)

---

Optional crew cabin to have furniture in specified boat timber with fitted carpet. Crew bathrooms have Solid Surface vanity tops and GRP floors with tracking

---



## EXTERIOR

---

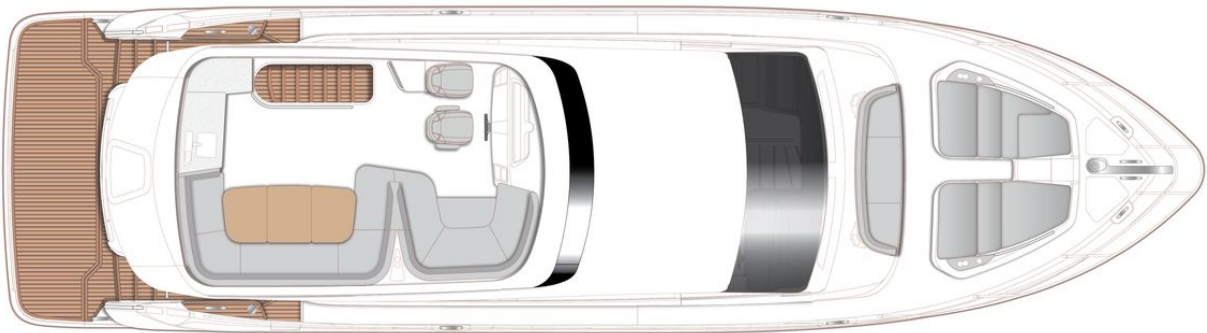






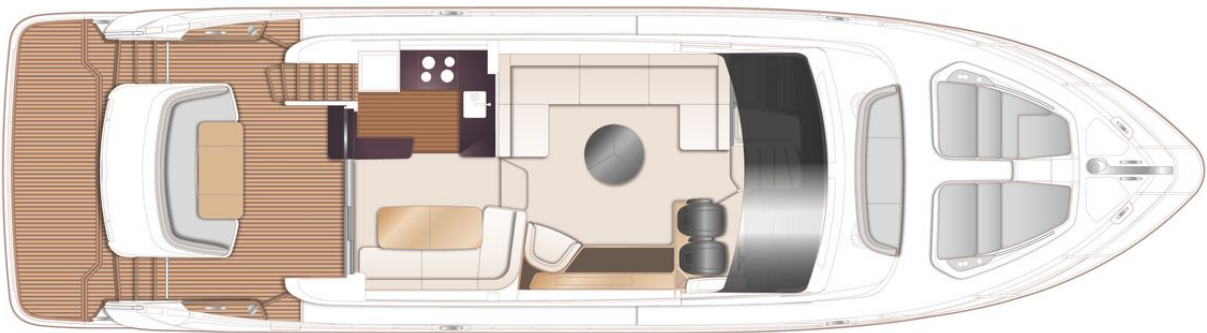
LAYOUTS

---



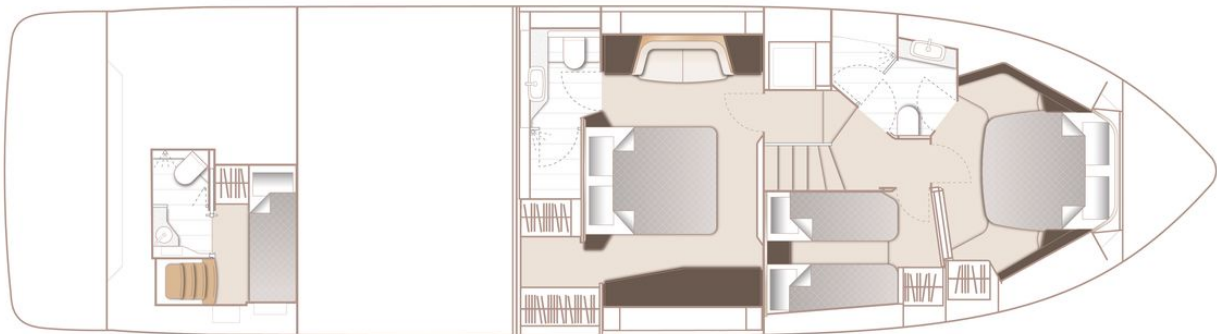
FLYBRIDGE

---



MAIN DECK

---



LOWER DECK

---

Yachts on the commission of Princess Yacht Monaco. The Company is not responsible for the accuracy of the information provided by the Shipowner (images used, yacht specifications, parameters, engine performance, legal design issues). The operating time of the engines is indicated at the time of preparation of the information and may change during further operation. The need for an inspection remains at the discretion of the Buyer. Exact parameters and characteristics can be specified in the contract of sale. Additional information is available from the manager on request.