

# PRINCESS 35M AVALON



## HIGHLIGHTS

/ SHIPYARD WARRANTY  
/ LIKE NEW CONDITION

/ 2 X TENDERS

## СПЕЦИФИКАЦИИ

Местоположение	France, Nice
Год	2018
Длина	35.15 м
Ширина	7.30 м
Осадка	2.10 м
Водоизмещение	150 tonnes
Запас топлива	18000 л

Запас воды	33004 л
Каюты	4+2
Число спальных мест	8
Двигатели	MTU M94
Макс. мощность	2 x 2450 лс
Наработка двигателей	457 m/h
Цена	12 900 000 € (inc VAT)

ОБОРУДОВАНИЕ

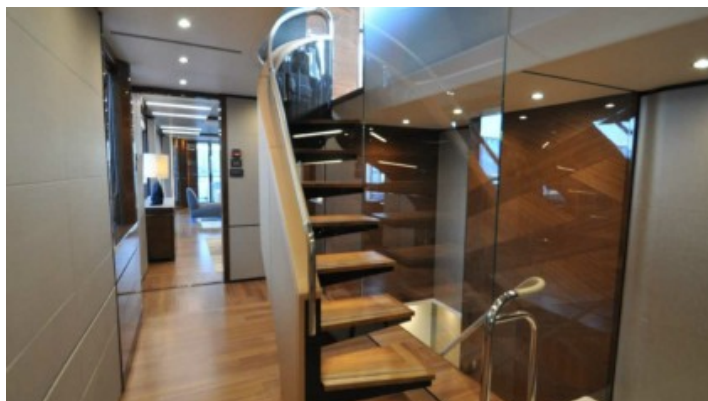
Fuel DIESEL
Propulsion PROP SHAFT
Gearboxes ZF
Steering Sleipner 76211
Bow thruster ABT Trac 75HP
Stern thruster ABT Trac 75HP
Stabilizers ABT Trac
Generators 2x Onan 65 KW
Generator battery charger, Charge master 12/15-2
Generator hours Generator 1: 995 hrs
Generator 2: 992 hrs
Electricity 220 V ; 75 KVa ASEA Converter
Shore power 3 phase 400V/125Amp
Batteries 3 x battery chargers2x 24V Battery banks
Emergency: 2 X 205Ah
2 X 75Ah
ACEA domestic air conditioning throughout the yacht
Water maker Sea Xchange SX 1800
Sewage Treatment Ecomar
Alfa Laval Separator
Refrigerators 1 x Vitrifrigo and 1 x Liebherr
Freezers 2 x Leibherr
Ovens 1 x Miele
Microwave 1 x Miele
Burners
Dishwasher 1 x Miele
Icemaker 1 x Vitrifrigo
Washing machines 2 x Miele
Dryer 2 x Miele
Coffee Machine 1 x Miele
Wine cooler Domestic RH423LDA
Communications Equipment
Satcom Inmarsat C Felcom 18
SSB Furuno
VHF FM-8900S DSC
Internal Phone System Panasonic
150w Furuno MF/HF radio
Navtex NX-700A/B Receiver
ACR RCL300A Searchlight

Thuraya Satellite Phone
Furuno AIS-F150
Autopilot FurunoNavpilot 700
Plotter Navnet, Furuno TZT14
Radar Furuno
GPS Furuno Gp303
Satnav Furuno
Depth sounder Furuno RD33
Log Furuno RD-33
Wind Instruments Furuno
Compasses Gyro Compass Simrad GC80
Simrad IS20 Rudder Display
Flir M625L Camera
Salon Samsung Smart 55" TV
Master Suite Samsung Smart 48" TV
VIP Stateroom Samsung Smart 40" Tv
Twin & Double guest cabin Samsung Smart 32" TV's
Captain Samsung Smart 28" TV
Crew Mess Samsung Smart 32" Tv
Blue ray HARMAN KARDON in all cabins, salon and crew mess
Garage Tender Winch Quick THG 534
Williams 565 Tender 150HP
Seadoo GTX
SUB HARMAN KARDON in all cabins, crew mess and salon
Speakers in all guest areas, on deck, flybridge and on the swimming platform
Radio and CD player
4 x WIFI Routers
Pasasrelle Pump Opacmar
Bathing Platform Arms Opacmar 742424
Sliding Roof MINI MOTOR REGGIO E ITALY
SMEGG BBQ PGF30B
Stainless Steel Deck Handrail
Hydraulic Swimming Platform
Swimming Ladder
Cousins and Covers
2 x Anchors with Chain Of 180m
Windlasses Lewmar V9
Capstans

Garage Emergency Diesel Bilge Pump Tipo
M-ACB 5315
Engine Room Fire Pump Calpeda
BNMD40/180D/A
Safety boxes 1 x Master, 1 x VIP, 1 x Captain cabin

Life Jackets 14 x Inflatable And 4 x Foam
24 x Fire Extinguishers Surveillance Cameras MOB
FM 200, Powder & Co2 extinguishers and Alarm System Fireboy
4 x Ocean Safety Life Raft (For 8 People)





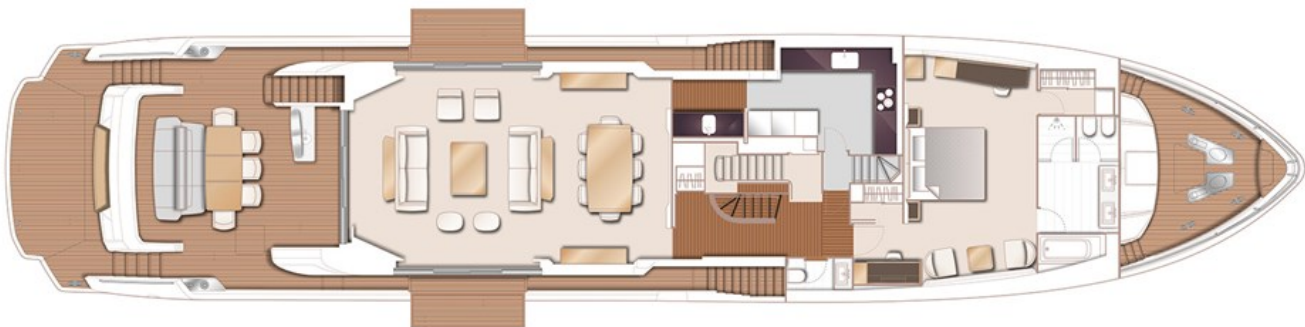
LAYOUTS

---



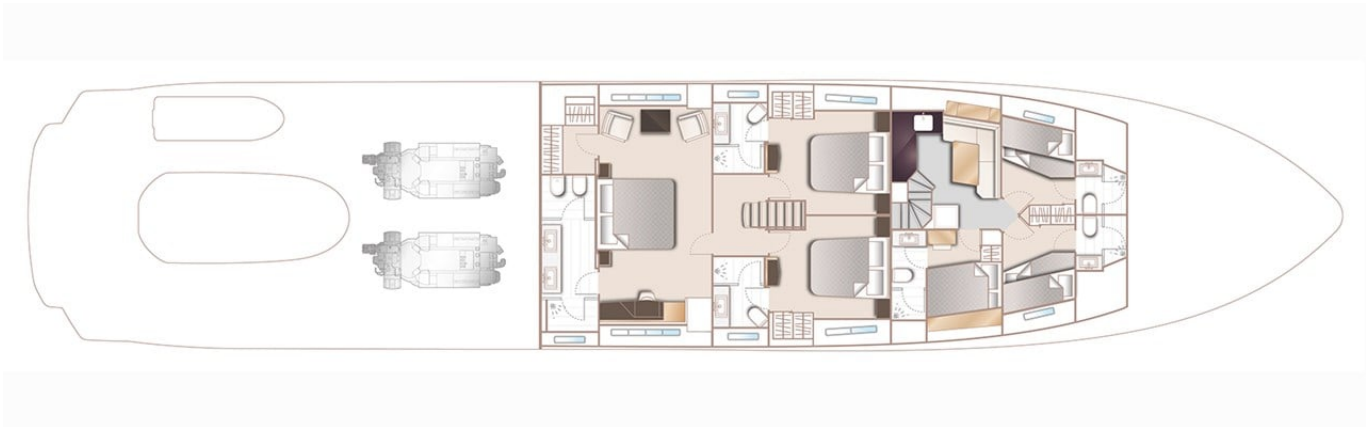
FLYBRIDGE

---



MAIN DECK

---



LOWER DECK

---

Yachts on the commission of Princess Yacht Monaco. The Company is not responsible for the accuracy of the information provided by the Shipowner (images used, yacht specifications, parameters, engine performance, legal design issues). The operating time of the engines is indicated at the time of preparation of the information and may change during further operation. The need for an inspection remains at the discretion of the Buyer. Exact parameters and characteristics can be specified in the contract of sale. Additional information is available from the manager on request.