

GENESIS

7 000 000 € (inc VAT)



BROKERAGE

HIGHLIGHTS

- | | |
|--|---------------------------------|
| / TURN KEY CONDITION | / NEW ENTERTAINMENT SYSTEM 2022 |
| / ZERO SPEED STABILIZERS | / NEW PAINT 2021 |
| / MOST VOLUMINOUS YACHT IN HER CLASS | / MTU QL3 2021 |
| / FULL BEAM MASTER AND VIP CABINS | / 10 YRS KAMEWA SERVICE |
| / CARBON POLES WITH AWNINGS COVERING ALL SUN AREAS | / PRIVATE USE ONLY |
| / VAT PAID | / BUILD TO COMMERCIAL CODE |

SPECIFICATIONS

Location	Italy, Sanremo	Engines	16V 2000 M93
Year	2011	Max power	3 x 2400 hp
Length	43.12 m	Max speed	33 +
Beam	8.35 m	Engine hours	2498 m/h
Draft	1.50 m	Price	7 000 000 € (inc VAT)
Cabins	4		

EQUIPMENT

OTHER MACHINERY

Tecma sanitation system

2 x watermaker Idromar 180ltrs/hours

UV lamp Idromar + carbon filter

1 x compressor diving equipment (2017)

ACCOMMODATION

Full-beam spacious master cabin, with large dressing room and en-suite bathroom with steam cabin

Full beam VIP cabin with en-suite bathroom and seating area

1 x double en-suite

1 x en-suite twin with Pullman

GALLEY

2 x Everlasting Fridge

1 x Vitrifrigo Freezer DW70BT (2017)

1 x Miele Oven BP9010 (New 2020)

1 x Miele Hood extraction

2 x Vitrifrigo Frezer (New 2022)

1 x Miele Professionnal Dishwasher

1 x Miele Microwave

1 x Foodwaste In Sinkerator Evolution

CREW AREA

1 x Miele Dishwasher

1 x Vitrifrigo Fridge in tunnel

1 x Liebherr Fridge/Freezer

LAUNDRY

2 x Miele Professionnal Dryer PT5136

2 x Miele Professionnal Washing Machine W2859

COMMUNICATION EQUIPMENT

Alarm Monitoring System (AMS) : Schneider Touch Screen Display in Wheelhouse and Crew Quarter

Camera Monitoring System : Schneider IP Cameras 8 Channel HD Camera Recorder 15” Led Display in Main Helm Bridge (new 2022)

Fixed DSC VHF

GSM

Monitoring of Tank Levels, Bilge Levels, Diesel Generators, Propulsion Engines, Main Switchboard Voltage (220VAC + 380VAC), Shore Power Voltage, Battery Levels, Navigation Lights

Magnetic Compass, Barometer, Hydrometer kit

SSB VSAT

KVH Satellite

NAVIGATION EQUIPMENT

1 x VHF Sailor RT5022

1 x Depth meter Simrad OP40

1 x AIS Furuno FA150

1 x Windstation Simrad AIS20

1 x Nextex Receiver Furuno NX700

1 x Autopilot Simrad AP50

3 x Dell 19’ Display

1 x Flir Camera Module

1 x GPS Furuno MX510

ENTERTAINMENT EQUIPMENT

All Entertainment system upgraded in March 2022

Sonos system throughout

2 x Iphone 13 Max control for use in any area

WyreStorm 4K

8x8 video matrix

3 x Shared Sky Italia Satellite Decoder

1 x Yamaha Airplay streamerMAIN DECK

2 x Samsung NeoQLED 55”

7.1 sound system ICON Connect entertainment system with dedicated server for movies (Apple store, iTunes account)

1 x Apple TV 4K

MASTER CABIN

Samsung NeoQLED 50”

Apple TV 4K

VIP CABIN

1 x Samsung NeoQLED 50”

PORT CABIN

1 x Samsung Full HD 32”

START CABIN

1 x Samsung Full HD 32”

AFT DECK

1 x Samsung NeoQLED 43”

1 x Apple TV 4K

TENDERS & TOYS

Castoldi 5.3 m water jet tender

1 x Seadoo GX150

1 x Seadoo GTW300

1 x Seabobs F5 and 1 x F5SDECK EQUIPMENT

Wet bar 1 x Samsung LED TV

1 x Icemaker Rarit

1 x Vitrifrigo fridge C76LX

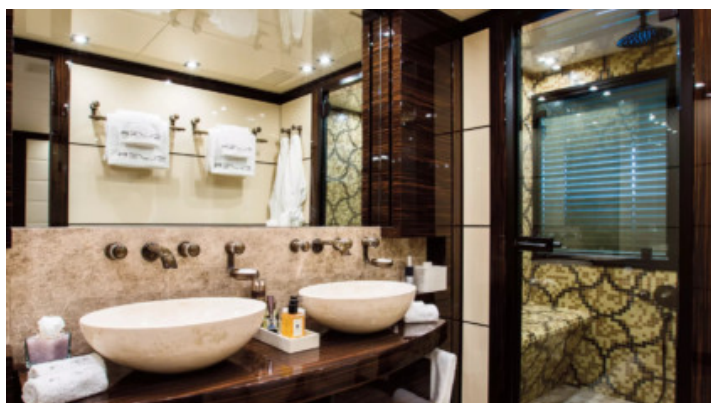
Water Sprinkler system all around	2 x Servitec Zodiac liferaft on flydeck
Maxwell 4000 & 4500 winchesFLYBRIDGE	EPIRB + SART Emergency Beacons
Wet bar	NOVEC Fixed Fire Extinguishing System in Engine Room
1 x Vitrifrigo fridge C76LX	Smoke Detection & Fire Alarm System in Engine Room
1 x Vitrifrigo Icemaker JacuzziBOW	Fire Blankets In Galley, Crew Lounge, Engine Room
1 x Fridge	Portable Fire Extinguishers In All Cabins
4 x Speakers	REFIT HISTORY
12 seating table	MTU QL3 Service (2021)
Sun Bed	Full paint (2021)
Carbon pole awnings	RINA 10 years class survey (2021)
2 x Maxwell 6000	AV/IT complete refit (2022)
Windlass 135m anchor chain	Generator overhaul (2023)
SAFETY & SECURITY EQUIPMENT	KaMeWa 10 yrs service (2023)

EXTERIOR

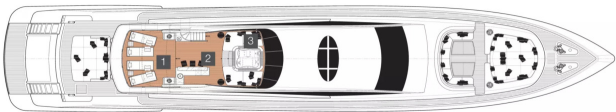


Yachts on the commission of Princess Yacht Monaco. The Company is not responsible for the accuracy of the information provided by the Shipowner (images used, yacht specifications, parameters, engine performance, legal design issues). The operating time of the engines is indicated at the time of preparation of the information and may change during further operation. The need for an inspection remains at the discretion of the Buyer. Exact parameters and characteristics can be specified in the contract of sale. Additional information is available from the manager on request.

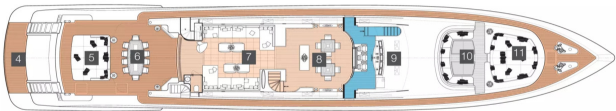
INTERIOR



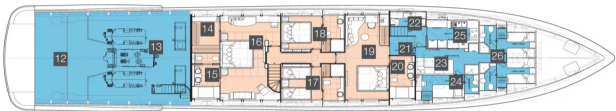
LAYOUTS



FLYBRIDGE



MAIN DECK



LOWER DECK
