

PRINCESS 82 MOTOR
YACHT

2 650 000 € (ex VAT)



HIGHLIGHTS

- / LOW ENGINE HOURS

/ LIKE NEW CONDITION

/ READY FOR DELIVERY
- / TRAC STAR 7.5X STABILIZATION

/ FIVE CABIN LAYOUT

SPECIFICATIONS

Location	Monaco, Monaco	Water capacity	1386 l
Year	2016	Cabins	4+1
Length	25.5 m	Berths	8+3
Beam	5.74 m	Engines	2 x Caterpillar C32A
Draft	1.75 m	Max power	1723 hp
Displacement	50.7 tonnes	Engine hours	252 m/h
Fuel capacity	6442 l	Price	2 650 000 € (ex VAT)

EQUIPMENT

HYDRAULIC

Hydraulic system consisting of separate engine driven hydraulic pumps on each engine with cross connections allowing any system to be supplied with hydraulic power from either engine, includes hydraulic windlass and variable speed 300 KgF

Hydraulic bowth ruster in place of standard (240 KgF)

Hydraulic sternth ruster (variable speed 300 KgF)

STABILISATION

TRAC Star 7.5X fin stabilizer system with inline Parker silencer (only available if 'hydraulic system' is also specified)

This system is designed to provide roll control at speeds above 12 knots as well as zero speed stabilisation.

Bow and Stern thrusters feature fully proportional speed control. When the main engines are turned off the hydraulics are powered by an electric motor for which the standard generator is suitable.

INTERIOR FURNITURE

Alba Oak interior wood Satin finish (galley & wheelhouse floors are Alba Haze as standard)

LAYOUT

Electrical up/down bulkhead behind helm position

Bidet in Master Stateroom bathroom

Crew utility area fitted out as crew mess with seating area, table, sink, microwave oven, fridge/freezer and air-conditioning (not possible if Gyro stabilisers are specified)

GALLEY

Perso Avorio granite galley worktop

BATHROOMS

Bianco Gioia marble FLOOR + WORKSURFACE

Mosaic tiles to Port & Starboard bathroom shower cubicle

COLOUR SCHEME

Platinum II Leather upholstery in saloon (band A)

DECK HARDWARE

Spa bath on flybridge (includes increased calorifier and water pump capacity)

Side entry gates to aft port & starboard side decks (in addition to standard passerelle)

Stainless steel boarding ladder supplied loose with deck mounting sockets fitted port and starboard sides (assists boarding side of boat from pontoon)

Dinghy chocks on bathing platform

GENERATOR

Second 13.5 kW/50hz ONAN generator

ELECTRICAL

Continental 220v/240v sockets

Additional refrigerator fitted below worktop in galley lobby (24v/240v, 150 litre). Not available if wine cooler or optional day head is specified

Icemaker fitted in flybridge wetbar (in addition to standard icemaker in saloon bar area)

Freshwater maker (190 litres/hour) complete with remote instrumentation

Underwater transom lights (4 LUMISHORE SMX95 Blue)

Optional saloon table lamps

2 x Porta Romana GLB08 Coffee Bean Charcoal lamp with 18" Straight Oval Shade in Putty silk

Optional Master Stateroom portside vanity unit table lamp

1 x Contardi Athena TA (Dark stained wood with black nickel plate & frame with shade in Cream Trevira (ribbed slate)

AUDIO VISUAL & COMMUNICATIONS

Forward Stateroom - Harman Kardon 2.1 Blu-ray (with Bluetooth connectivity) and KEF speakers

Port Guest Cabin - 28" LED TV with a Fusion MS-AV700i Radio/DVD/MP3 player with Bluetooth facility

Starboard Guest Cabin - 28" LED TV with a Fusion MS-AV700i Radio/DVD/MP3 player with Bluetooth facility

Exterior upgrade

Flybridge also linked to the saloon audio system

Cockpit - Waterproof speakers linked to the flybridge audio system, with separate local control (recommended if hard top fitted)

Foredeck seating walk-through area - waterproof speakers linked to the flybridge audio system, with separate local control

KVH (M7) Tracvision (linked to all television sets)

Dummy KVH (M7) dome

Satellite TV decoder (common interface) (each). Decoders are required with each television if different channels are to be required at the same time.

NAVIGATION

Raymarine e165 (15.4") multifunction brilliant colour display with 2 screens at lower helm and 2 screens at upper helm (4 screens in all) in place of standard 3 x 12.1" screens

European version plotter

International VHF

EXTERIOR UPHOLSTERY / CANVAS / COVERS

Bimini top (electro-hydraulically powered with overhead LED lighting and switched from flybridge console) - Charcoal Grey sunbrella canvas

Foredeck sun awning

Cockpit & flybridge upholstery including helm seats and sunbed cushions - Vinyl (white or vanilla) with Movida contrast piping & stitching

Foredeck seating/sunbed cushions in Vinyl (white or vanilla) with Movida contrast to upstand of cushions

ENGINES

Caterpillar C32A (2 x 1723 hp)
Engine hours 252 m/h

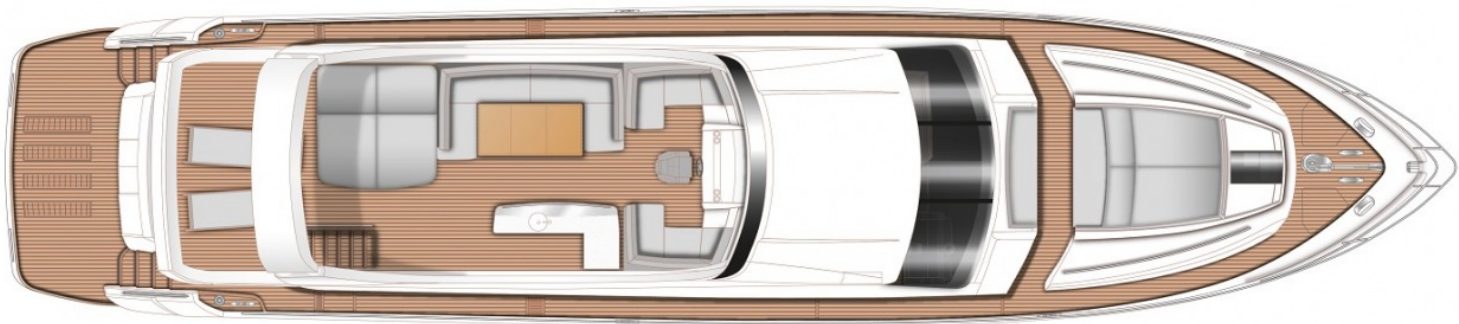
EXTERIOR



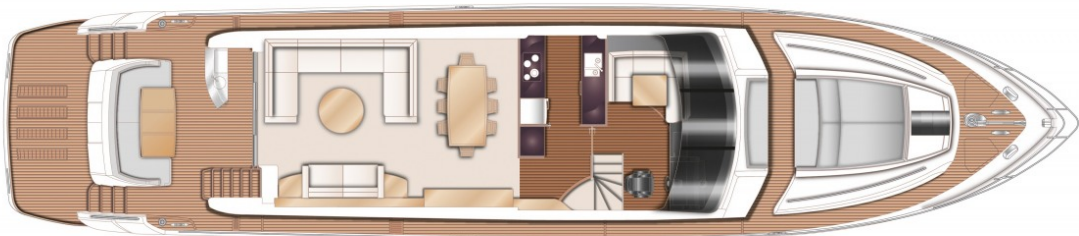
INTERIOR



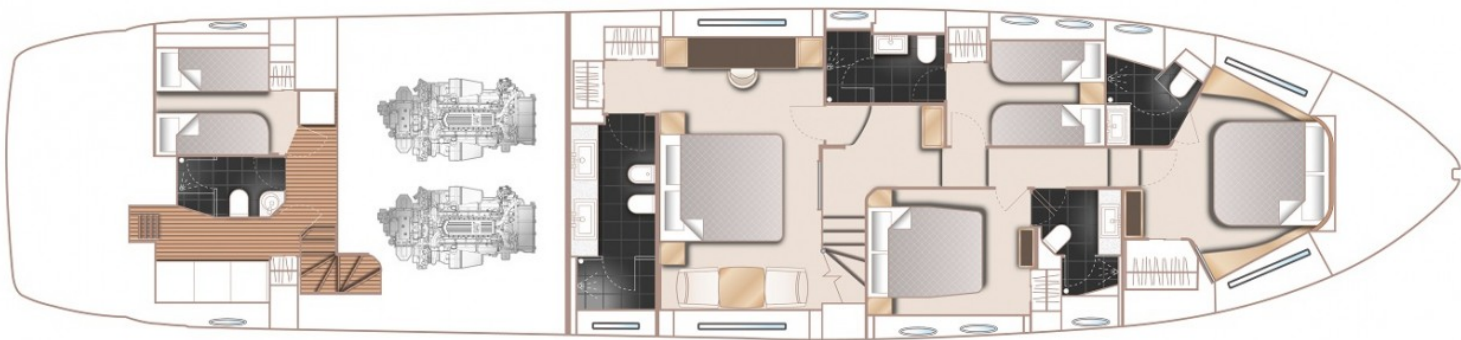
LAYOUTS



FLYBRIDGE



MAIN DECK



LOWER DECK
