

PRINCESS 72 MOTOR
YACHT

1 250 000 € (ex VAT)



HIGHLIGHTS

- / FULL OPTION

/ MAINTENANCE AT HIGHEST STANDARDS
- / PRISTINE CONDITION

/

SPECIFICATIONS

Location	Greece, Athens	Water capacity	1342 l
Year	2012	Cabins	4+2
Length	22.35 m	Berths	8+3
Beam	5.49 m	Engines	Twin Caterpillar C32 Acert
Draft	1.68 m	Max power	2 x 1622 hp
Displacement	45 tonnes	Engine hours	1400 m/h
Fuel capacity	5000 l	Price	1 250 000 € (ex VAT)

EQUIPMENT

Hull color: White
Walnut interior wood gloss finish
Teak laid side decks and flybridge
Galley and helm floors in Rovere Oak V-Groove
Helm console is Chocolate Brown
Brown leather helm seats
Raymarine navigation system instead of standard Furuno
European version pkotter
Safe in Master Cabin
White vinyl windscreen covers in place of standard black mesh
Foredeck sunbed cushions in Movida Metallic
Cockpit & Flybridge upholstery including helm seats and sunbed cushions – Movida Metallic
European 220v/240v sockets
Bow and stern thrusters
Third station control in cockpit (engine and thrusters coltrols)
Teak laid on foredeck walk through area
Stainless steel anchor in place of standard

Starboard stateroom to have optional twin berths with electric slider to enable conversion to double
Optional second generator ONAN 13,5 kW
Heated towel rail in bathrooms of master and vip cabins
Underfloor heating in bathroom in master cabin and vip cabin heads
Chain counter on both stations
BBQ NEFF Lava Brick
Raymarine GPM400 processor and radar antenna RA 1048SHD in place of standard
Raymarine G120 chartplotter on flybridge
Autopilot: display ST7002 (lower and upper helm) in place of standard
Raymarine AIS 650 + wild sensor on the top
Three video cameras (engine room, stbd stern, port stern, aft)
Eberspacher D10 heater with owtlets to cockpit seating area and flybridge stairs
Stern docking lights

ENGINES

Twin Caterpillar C32 Acert (2 x 1622 hp)

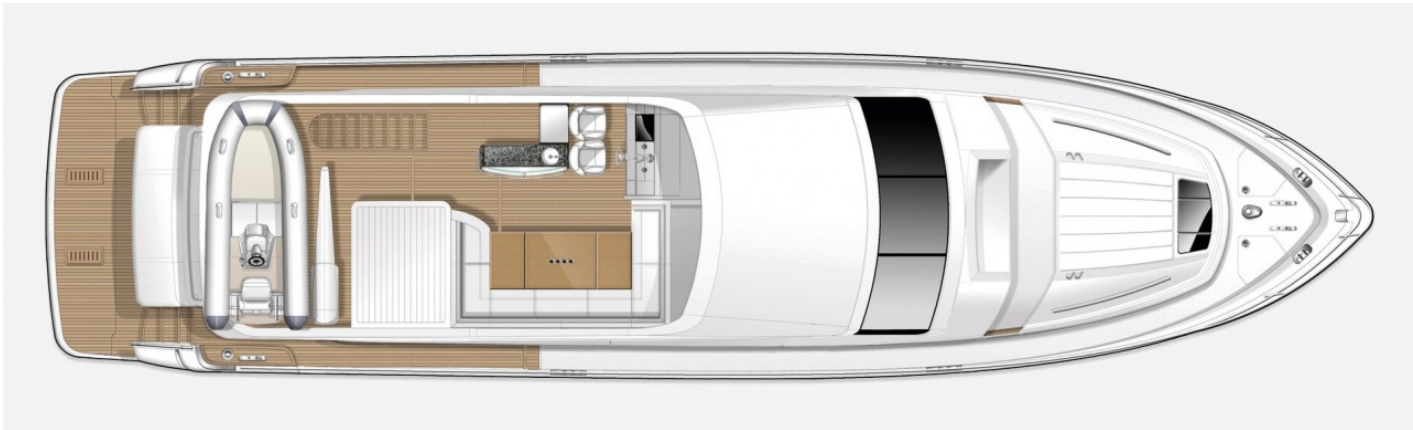
EXTERIOR



INTERIOR



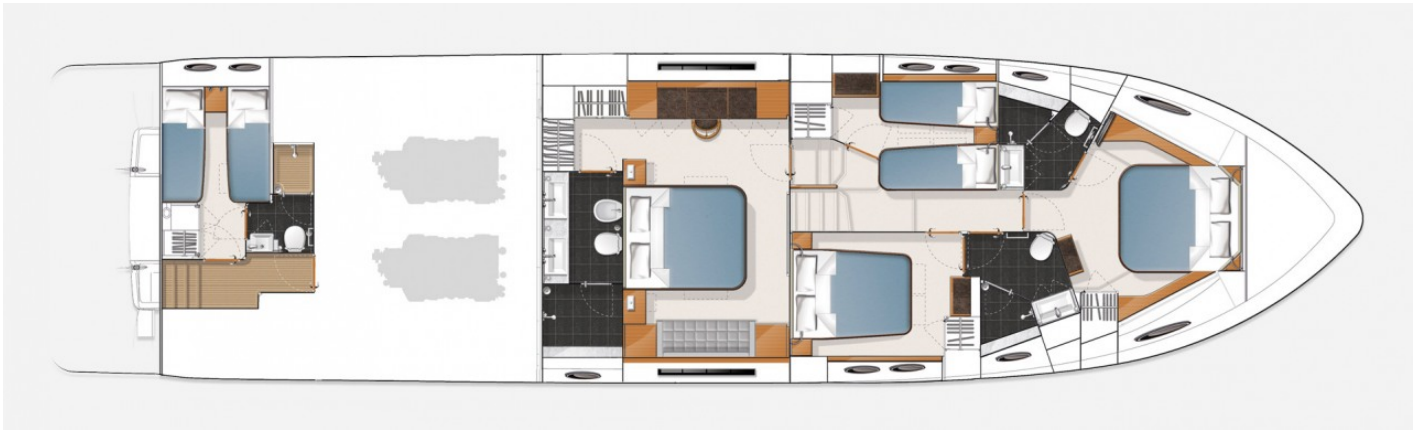
LAYOUTS



FLYBRIDGE



MAIN DECK



LOWER DECK
