

SUNSEEKER 73  
MANHATTAN

1 600 000 € (ex VAT)



HIGHLIGHTS

- / PRISTINE CONDITION

/ SPACIOUS INTERIOR LAYOUT

/ ARMANI FURNITURE

/ 4 CABINS + 1 FOR CREW

/ STABILIZERS
- / AIR-CONDITIONING

/ AV/TV

/ WILLIAMS 385 TENDER

/ TENDER FLY CRANE

SPECIFICATIONS

Location	Rodos, Greece	Water capacity	1200 l
Year	2013	Cabins	4+1
Length	22.6 m	Engines	MAN V12-1550
Beam	5.73 m	Max power	2 x 1550 hp
Draft	1.63 m	Engine hours	1000 m/h
Fuel capacity	5000 l	Price	1 600 000 € (ex VAT)

# EQUIPMENT

---

## Construction:

- Hand-laid GRP
- Gel coat including stripes
- Vinylerster skin coat with powderbound mat
- Stitched multi-axial reinforced single-skin bottom
- Balsa-cored hull topsides
- Cored deck and superstructure
- Hull stiffened with longitudinal stringers supported by transverse bulkheads and floors

## Deck:

- Fittings all in stainless steel
- 8 stainless steel deck cleats
- Pulpit and cockpit rails
- Stainless steel fendering with rubber insert
- Stainless steel bow roller with anchor stop
- Stainless steel bow plate
- Delta anchor 50Kg and 60m 12mm chain (galvanised)
- Electric bow winch and capstan with deck, cockpit and flybridge controls 24vDC
- Chain locker - fender stowage
- Curved safety glass windscreen
- 3 x Pantograph windscreen wipers
- 24vDC and washers
- Fuel fillers port and starboard
- Fresh water filler
- IMCO navigation lights
- Remote spotlight 24vDC
- Ensign staff and socket
- Fender tie bar under anchor locker lid
- Fore deck storage lockers
- Fore deck seating
- 8 fenders
- 6 warps

## Aft Cockpit:

- Teak-laid cockpit floor
- Self-draining
- Moulded staircase to flybridge
- Side bar unit with ice maker
- Stern seating
- Stern safety gates
- Engine room access hatch
- 2 x stern capstan winches 24vDC and fairleads
- Rope lockers
- Cockpit speakers
- Overhead cockpit lights 24vDCDC
- Low-level courtesy lights aft cockpit 24vDC

## Saloon:

- Flush stainless steel glazed sliding door to aft cockpit
- Air conditioning
- Flatscreen television 40"
- Blu-ray/radio/CD/DVD cinema surround system
- Coffee table
- Halogen overhead lighting 24vDC
- 2 x double AC sockets
- Scatter cushions
- Choice of interior finishes and veneers
- Fitted carpet
- Dining

- Large dining area with formal dining table and eight chairs
- Access stairs to the lower decks
- Halogen overhead lighting 24vDC
- 2 x double AC sockets
- Fitted carpet
- VIP Forward Stateroom
- Double berth
- Drawers and storage beneath
- Wardrobe
- Dressing table with mirror and stool
- Halogen overhead lights 24vDC
- 2 x reading lights 24vDC
- 2 x panoramic windows with opening ports and curtains
- Deck hatch with screen
- Two double AC sockets
- Flatscreen television (32")
- Radio/CD/DVD player
- Air conditioning
- Door to en suite toilet/shower
- Fitted carpet
- VIP En Suite Shower Room
- Electric toilet
- Washbasin, taps and soap dispenser
- Toothbrush and glass holder
- Towel ring and towels
- Mirrored vanity unit
- Separate shower compartment
- Extractor fan
- Halogen overhead light 24vDC
- Opening porthole with mosquito screen and blind
- Razor socket 240/110v
- Aft Master Stateroom
- Two panoramic windows with opening ports and curtains
- Double berth
- Under-berth drawers and storage
- Bedside cabinets
- Fixed settee
- Dressing table with mirror and stool
- Lockers and drawers
- Halogen overhead lights 24vDC
- 2 x reading lights 24vDC
- 2 x double AC socket
- Flatscreen television (32")
- Radio/CD/DVD player
- Air conditioning
- Walk-in wardrobe
- Door to en suite toilet/shower
- Fitted carpet
- Master En Suite Shower Room
- Electric toilet
- Two washbasin, taps and soap dispenser
- Toothbrush and glass holder
- Towel ring and towels
- Mirrored vanity unit
- Separate shower compartment
- Extractor fan
- Halogen overhead light 24vDC
- Opening porthole with mosquito screen and blind
- Razor socket 240/110v

### Galley

- Electric refrigerator and freezer
- 4 burner ceramic hob
- Microwave oven
- Stainless steel sink
- Hot and cold water
- Rubbish bin
- 8 place crockery and cutlery set
- 2 x double AC sockets
- Hand-held fire extinguisher
- Dishwasher
- First aid kit

### Engines

- Twin engines
- Soundproofing throughout engine room
- 2 x aluminium cross balanced fuel tanks with electric sending unit
- Separate fuel filters/water separators
- Automatic fire extinguishers
- Engine room and forward bilge flood alarms
- Automatic bilge pumps

- Automatic flood pumps
- 4 x extractor fans 24vDC
- Manual bilge pump

### Electrical

- Slow speed generator with underwater silent exhaust and sound box
- Shore power dockside connection
- Galvanic isolator
- 24vDC and 12vDC electrical system with full circuit breaker protection
- 8 x engine batteries 24vDC circuit
- 8 x domestic batteries 24vDC circuit
- 4 x generator batteries 12vDC circuit
- Alternator split charging system
- Remote battery switches controlled from locker in cockpit
- Battery charger for 24vDC circuits
- Battery charger for 12vDC circuits
- AC water heater
- AC sockets throughout the boat
- 24vDC hand light and cable

## ENGINES

---

Twin MAN Diesel 12V (2 x 1550 hp)



EXTERIOR



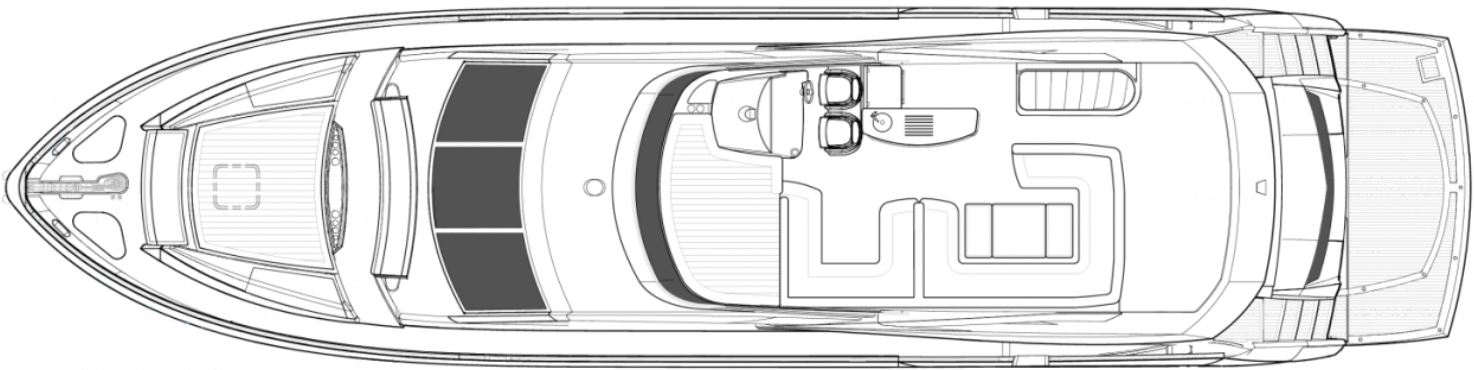






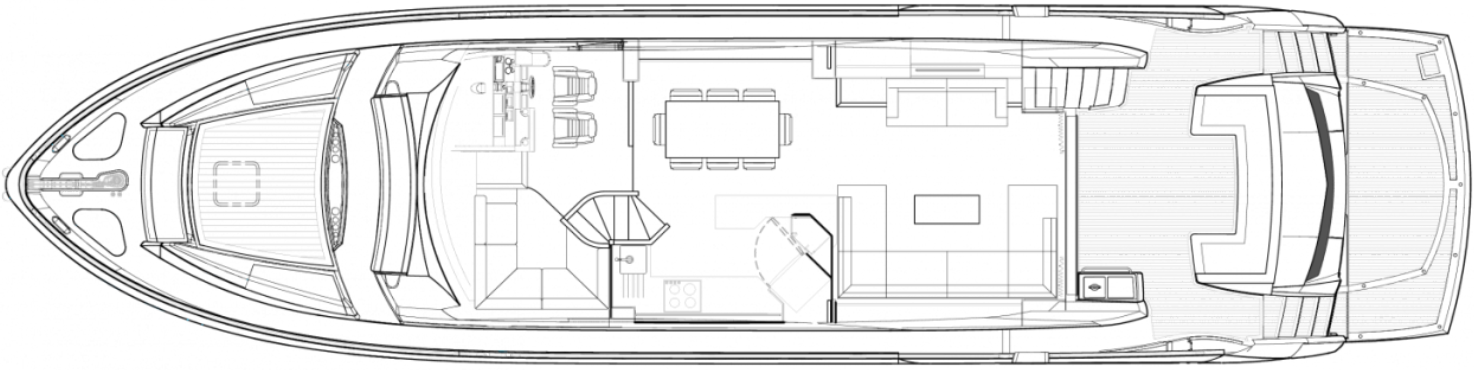
LAYOUTS

---



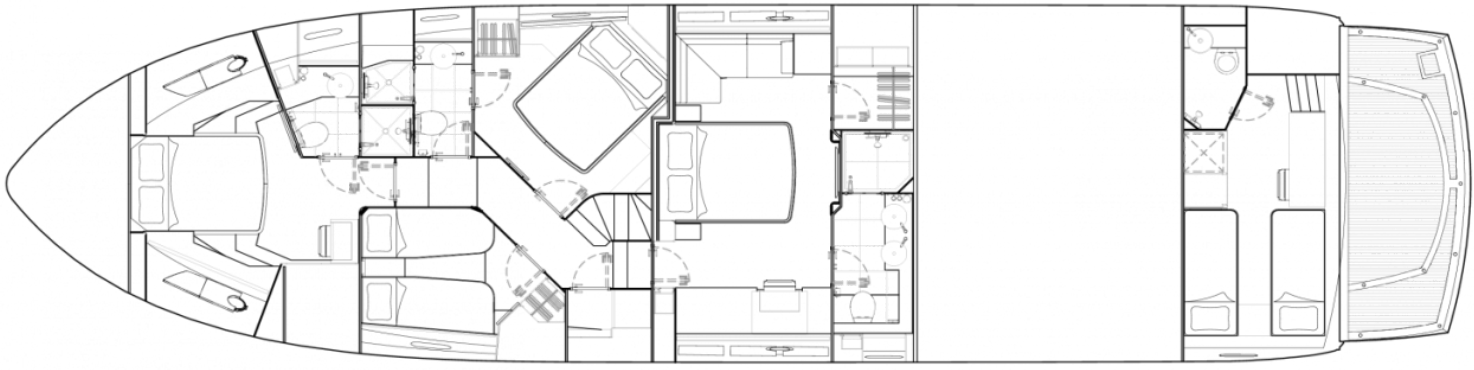
FLYBRIDGE

---



MAIN DECK

---



LOWER DECK

---