

2012 DOMINATOR 780S | 23.95 M



SPECIFICATIONS

Localisation	Croatia	Contenance en eau douce	1385 l
Année	2012	Cabines	4+2
Longueur	23.95 m	Berths	8+4
Largeur	6 m	Moteurs	MAN V12
Tirant d'eau	2.06 m	Puissance max	2 x 1800 hp
Déplacement	60 tonnes	Engine hours	295 m/h
Capacité en carburant	7500 l	Prix	2 250 000 € (ex VAT)



GALLERY



GALLERY













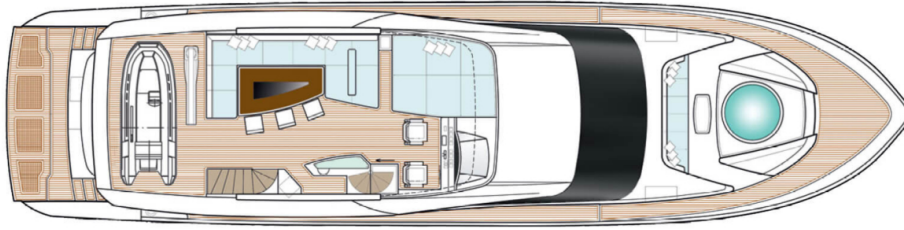
GALLERY



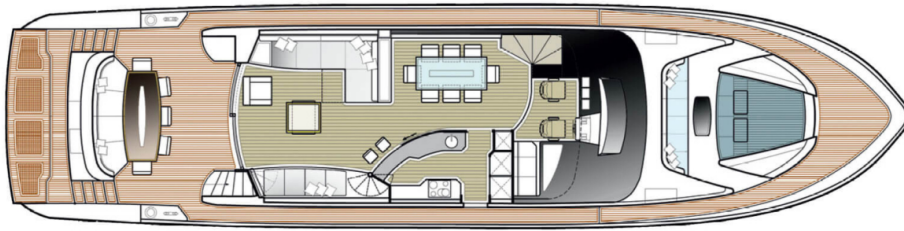
GALLERY



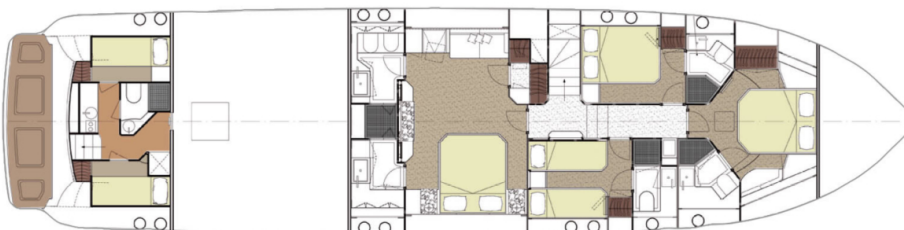
LAYOUTS



FLYBRIDGE



MAIN DECK



LOWER DECK

EQUIPMENT

Flybridge

Wide plexiglass windscreen with stainless steel supports

Besenzoni G309 electro-hydraulic crane, 400 kg lifting capacity

Fiberglass helm console, including:
Engine and gearbox gauges with LED indicators
Engine warning monitors
Engine control levers with emergency function
Rudder angle indicator
Fuel level gauge
Engine room temperature gauge
Simrad IS20 Wind
Simrad IS20 Graphic
Simrad IS20 Compass

Simrad IS20 Combi

Simrad Autopilot
AP28

Simrad Steering Lever
S35

VHF Radio RAY 240E

Searchlight controls

Bow and stern thruster
controls

VDO alarm indicators

Trim tab controls

Intercom station

Windlass control

Raymarine G150
chartplotter/radar/GP
S/fishfinder

Main Deck & Cockpit

Stainless steel sink with hot and cold water taps	Whirlpool barbecue
Refrigerator	

Safety Equipment

Exterior LED lighting along the side decks	Staircase lighting
LED handrail lighting	Small forward sofa with lockers, cushions, and waterproof cover
Water pipe for foredeck chain locker wash	Forward teak table in front of sofa with stainless steel pedestal and waterproof cover
PROJECT X4 2500W 24V windlass	Teak cockpit table with stainless steel supports and waterproof cover
Windlass control system	Cockpit sunshade
3 windshield wipers with washers	Engine room access from cockpit via stainless steel ladder
Foredeck sunpad area with external cushions, located port, starboard, and above spa pool; fiberglass and stainless steel handrails with waterproof cover	2 weather-resistant speakers in cockpit (main deck)
Fiberglass Jacuzzi with LED lighting	Besenzoni electro-hydraulic bathing ladder - model SI 402
Reinforced safety glass windows with sunshades	2 shore power cables and 220V 32A sockets with 20 m cable
2 electric warping winches on the foredeck (technical area)	Cockpit shower with hot and cold water
Sanguineti anchor, model SC92, 90 kg galvanized	Electric waterproof side door (Nemo) to galley
14 mm anchor chain,	Glendinning cable reel

100 m	(one side)
Chain wash system	3 helm stations in the cockpit (engine start/stop, bow/stern thrusters, windlass)
SANSHIN spotlight on the bow	
LED ceiling lights in cockpit according to lighting plan T4	Infrared camera

Swim Platform

1 lifebuoy	2 x 8-person life rafts
1 first aid kit	1 marine horn
1 life ring	1 ship's bell
1 floating line	7 x 2kg dry powder fire extinguishers
16 life jackets	

Upper Deck – Salon

Folding swim platform with H+B Technics hydraulic arms, 1000 kg lifting capacity
Usable lifting capacity (excluding platform weight):
-700 kg

Galley

Leather sofas	Ice maker - CLASSIC REFILL PF DX
Coffee table	220-240V 50Hz
1 sunlounger	220V socket
1 leather pouf	Electric blinds
Starboard cabinetry	Wooden flooring

with 40' TV	Marble floor at entry
Ceiling LED lighting	BOSE Dolby Digital Lifestyle 38 sound system
Bar with sliding partitions	HUMAX F3-FOX CI digital satellite receiver (central unit)
Portside dining area with large table for 8	ORION analog telephone

Wheelhouse

WHIRLPOOL EXTRACTOR IX hood	Wooden flooring
WHIRLPOOL 40L CRISP microwave	Marble countertop
BOSCH 4-burner ceramic cooktop	Fire extinguisher
Refrigerator + freezer, 250L (220V & 24V) (sea water cooled)	Full dinnerware set for 8 with glasses, stainless steel plates and cutlery
Stainless steel sink with hot/cold mixer tap	Blinds
Bosch dishwasher, model SRV 46A63	LED ceiling lights
Vertical storage cabinet	

Lower Deck – Owner's Cabin

1 leather pilot seat with electric adjustment	Curtains
LED ceiling lights	Access stairs with stainless steel safety handrail
Chart storage drawer	BCS hydraulic steering system
Wooden flooring	Infrared camera monitor (engine room)

and wheelhouse)

Owner's Bathroom

BOSE Dolby Digital Lifestyle 38 sound system

Walk-in wardrobe with lighting, drawers, and hangers

Humax F3 CI digital satellite receiver

Safe

2 bedside tables

Large windows with opening portholes

2 reading lights

220V socket

Leather sofa

Electric blackout blinds

Leather pouf lounge area

ORION analog telephone

Bulkhead-mounted 32" TV

VIP Cabin

Hydromassage shower

Blinds

2 glass washbasins

Stainless steel porthole with mosquito screen

2 marble countertops

Shower extractor fan

LED ceiling lights

220V socket

1 Tecma electric toilet (large)

Marble flooring

1 Tecma bidet

2 large mirrors with halogen lighting

VIP Bathroom

2 bedside tables

220V socket

2 wall lights at headboard

Sunshades

Halogen ceiling lights

BOSE Dolby Digital 3.2.1 GS

Stainless steel side portholes with mosquito screens	Humax F3-FOX CI digital satellite receiver (central unit)
Emergency hatch with ladder to forward main deck	25" LED TV
LED ceiling lights	ORION analog telephone

Guest Cabins (x2)

Shower with teak floor	Marble flooring
Extractor fan	220V socket
Ceramic basin with marble countertop and storage	Blinds
Mirror with halogen lighting	Tecma electric toilet with bidet function
Hot/cold water mixer	LED ceiling lights
Stainless steel porthole with mosquito screen	

Guest Bathrooms

BOSE Dolby Digital 3.2.1 GS	Headboard lamp
ORION analog telephone	220V socket
LED ceiling lights	Curtains
2 stainless steel portholes with mosquito screens and sunshades	25" LED TV

Engine Room

Extractor fan	220V socket
Shower with teak	Blinds

grating	Tecma electric toilet with bidet function
Ceramic/glass or marble washbasin	LED ceiling lights
Mirror cabinet with halogen lighting	Dedicated 3-way drainage system overboard (only in guest heads)
LED ceiling lights	
Stainless steel portholes with mosquito screens	

Power Supply

2 x MAN 1800 HP main engines	Fully sound-insulated engine room
ZF 3050 V gearboxes, ratio 2714:1	Cathodic protection system with zinc anodes
V-drive configuration, stand-alone	95 mm stainless steel shafts with OTMAN shaft brackets, GRP stern tubes, and carbon/stainless shaft seals
Double-shaft coupling	
Driveshaft between engines and gearboxes	5-blade ROLLA Nibral 1067×1400 propellers

Lighting

2 x ONAN MDKBF 22.5 kW generators (engine room)	3 x 80A battery chargers (Mastervolt) for service, engines, and generators
2 x 220V shore power sockets	

Air Conditioning

220V main LED lighting	24V stair lighting
24V waterproof exterior LED lights	

2012

DOMINATOR

780S | 23.95 M

+33 6 40 61 88 46 

m.st.pierre@princessyachts
monaco.com

Follow Princess Yachts Monaco

