

2021 PRINCESS X95



BROKERAGE

HIGHLIGHTS

/ 5 CABIN LAYOUT	/ FIN ZERO-SPEED STABILISERS	/ SKYLounge WITH JACUZZI
/ UNDERWATER LIGHTS	/ HEATED FLOOR IN ALL BATHROOMS	/ HIGH-END AV/TV
/ FLIR CAMERA	/ ALL BIMINIS	/ EXTRA CABINS SOUNDPROOFING

SPECIFICATIONS

Localisation	Turkey	Contenance en eau douce	1805 l
Année	2021	Cabines	5+3
Longueur	29.11 m	Moteurs	MAN V12
Largeur	6.71 m	Puissance max	2 x 1900 hp
Tirant d'eau	2.03 m	Engine hours	1250 m/h
Déplacement	104 tonnes	Prix	10 000 000 € (inc VAT)
Capacité en carburant	13400 l		

The yacht is on the commission of Princess Yacht Monaco. The Company is not responsible for the accuracy of the information provided by the Yacht owner (images, specification, parameters, engine performance, legal, etc). The operating time of the engines is indicated at the time of preparation of the information and may change during further operation. The need for an inspection remains at the discretion of the Buyer. Exact parameters and characteristics can be specified in the contract of sale. Additional information is available upon request.















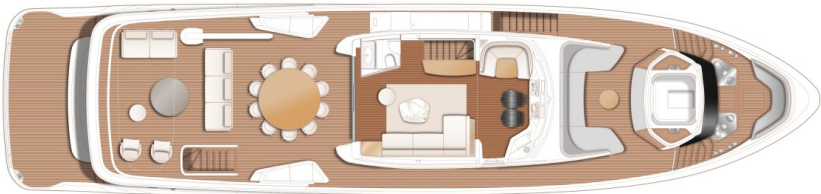








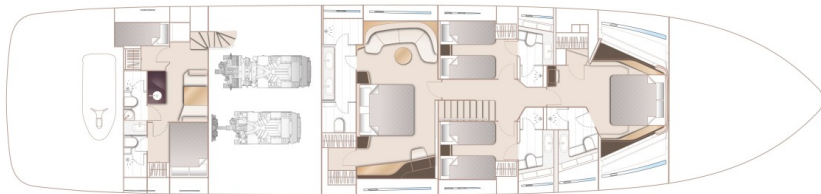
LAYOUTS



FLYBRIDGE



MAIN DECK



LOWER DECK

EQUIPMENT

Princess X95 Motor Cruiser molded in glass fiber and fitted with Twin MAN V12 1900 (2 x 1900 h.p. each)

Standard crew cabin layout with Wetbike garage with additional storage for seabobs (2);

Standard hydraulic system

International VHF;

Joystick Aventics (Dual Station) (operates both engines, bow thruster and optional stern

Interiors: SILVER OAK SATIN

Galley worktop: Granite or Quartz;

Electro hydraulic transformer platform with 1000Kg SWL fitted as standard;

Electrical Continental 220v/240v sockets;

Hydraulic Stern thruster (variable speed 420 KgF);

thruster);

Sleipner Hydraulic system (consisting of separate engine driven hydraulic pumps on each engine with cross connections allowing any system to be supplied with hydraulic power from either engine) and incorporating SPS92/VF1350 vector fin stabiliser system.

Optional five (5) stateroom layout

Starboard cabin to have double berth conversion with powered sliding mechanism on inboard berth (not available if Pullman berth is specified)

Skylounge day head with basin, bidet and storage locker;

Wall mounted bidet douche shower fitted at all guest toilets (7);

Additional (navigation) helm seat in wheelhouse;

Side entry gates to aft port & starboard side decks in addition to standard passerelle;

8mm teak decking upgrade throughout;

Flybridge bar unit included in outboard sideboard (including drawer refrigerator, icemaker, sink and storage cupboard);

Plug in carbon pole shower and deck socket to aft flybridge deck;

Upgrade to two ONAN 50kW/50Hz generators (hours: 2237) to be fitted in place of standard;

High impact mini dome anchor pocket camera x 2 (one for each anchor);

Dial in CCTV system with recording;

8 x Lumishore THX 403 (4 per side);

Technicomar ECOmar 20s sewage treatment

Flybridge coaming painted in Platinum metallic paint;

Saloon & bar area floors to be in 'V' groove planked wood with inlaid rug* in aft saloon area (wood type same as galley, dining & helm);

Port cabin to have double berth conversion with powered sliding mechanism on inboard berth (not available if Pullman berth is specified);

Deck saloon to have opening patio door on starboard in place of full height windows;

Steam Shower fitted at Master and aft VIP cabin toilets ;

Spa bath on foredeck (includes increased calorifier and water pump capacity) in place of standard Sun pad;

Cockpit bar unit (including drawer refrigerator, icemaker, sink and storage cupboard);

Stainless steel anchors in place of standard;

Third station controls on starboard side of flybridge coaming (engine controls, thruster controls and engine emergency stops);

Plug in carbon pole transom shower and deck socket to bathing platform;

Optional top loading cool box in place of port foredeck storage locker;

Upgrade horn to twin Kahlenberg including signal timer;

Underwater transom lights 4 x Lumishore THX 403 (Blue & White);

Freshwater maker (190l/hr)

plant;	Underfloor heating in bathrooms (5);
Miele Professional washing machine and tumble dryer fitted in crew area;	Additional washer/dryer located in guest lobby area;
Main deck Master Stateroom – 55’ UHD Smart LED TV on power lift, Naim Uniti Atom audio system	Cockpit seating area – Naim Uniti Atom audio system with Bluetooth
Cockpit seating area to have 42’ exterior TV on hinge down mechanism;	Flybridge area to have 42’ exterior TV on hinge down mechanism;
Starboard guest cabin 28’ HD LED TV, Naim Uniti Atom audio system	Port guest cabin 28’ HD LED TV, Naim Uniti Atom audio system
Crew mess 28’ HD LED TV, Naim Uniti Atom audio system	Foredeck seating walk-through area – Naim Uniti Atom audio system
Internal telephone system with PBX exchange with handsets in all cabins (including crew cabin) and at helm position (includes forward/dinette, optional main deck master);	KVH (TV8) Tracvision – in 80cm dome (linked to saloon and skylounge)
Satellite TV decoder (common interface) (10)	Marine router acting as a single control point for Satphone (when selected), 3G/4G services and marine WiFi networks. Easily accessed and controlled via a web browser on any connected device, the router allows the owner and/crew to control and restrict internet connections
FLIR camera (M625L);	Additional Raymarine Axiom X 19’ brilliant colour multifunction display at
Additional Raymarine 12kw SHD 48’ digital colour open array scanner	Raymarine AIS Class B transponder interfaced with chartplotter & with 8ft (2.4m) aerial;
Carbon fibre pole mounted awning to aft end of flybridge deck in charcoal grey mesh;	Foredeck sun awning with 4 carbon fibre poles (grey mesh) and deck mounting sockets;
Steam shower at the Master cabin	Steam shower at the aft VIP cabin
Reticulated foam to all standard exterior cockpit and foredeck fixed furniture (loose furniture items on the sundeck and loose cockpit chairs, if selected, are not included)	To supply and fit fuel station in garage with fuel delivered from day tank
Optional Main Deck Master soundproofing	Fit additional acoustic insulation to the engine room bulkheads and deck head
Crew cabin Sound proofing – deck head/headlining to have Dynamat extreme and Rockwool added	Lining of the hull sides with Dynamat extreme to minimize level of splashing water noise in lower cabins

Multimedia control system iPad based
(additional two weeks for the labors required)

Tender Williams DieselJet 505 2020

Optional transom configuration - Incorporating
aft lazarette area, 2 crew cabins with bunks in
each, Captain's cabin with 1 bed and 2 separate
bathrooms

2021 PRINCESS X95

+33 6 40 61 88 46 

m.st.pierre@princessyachtsmonaco.com

Follow Princess Yachts Monaco

