

2021 RIVA 66' RIBELLE | 21M



BROKERAGE

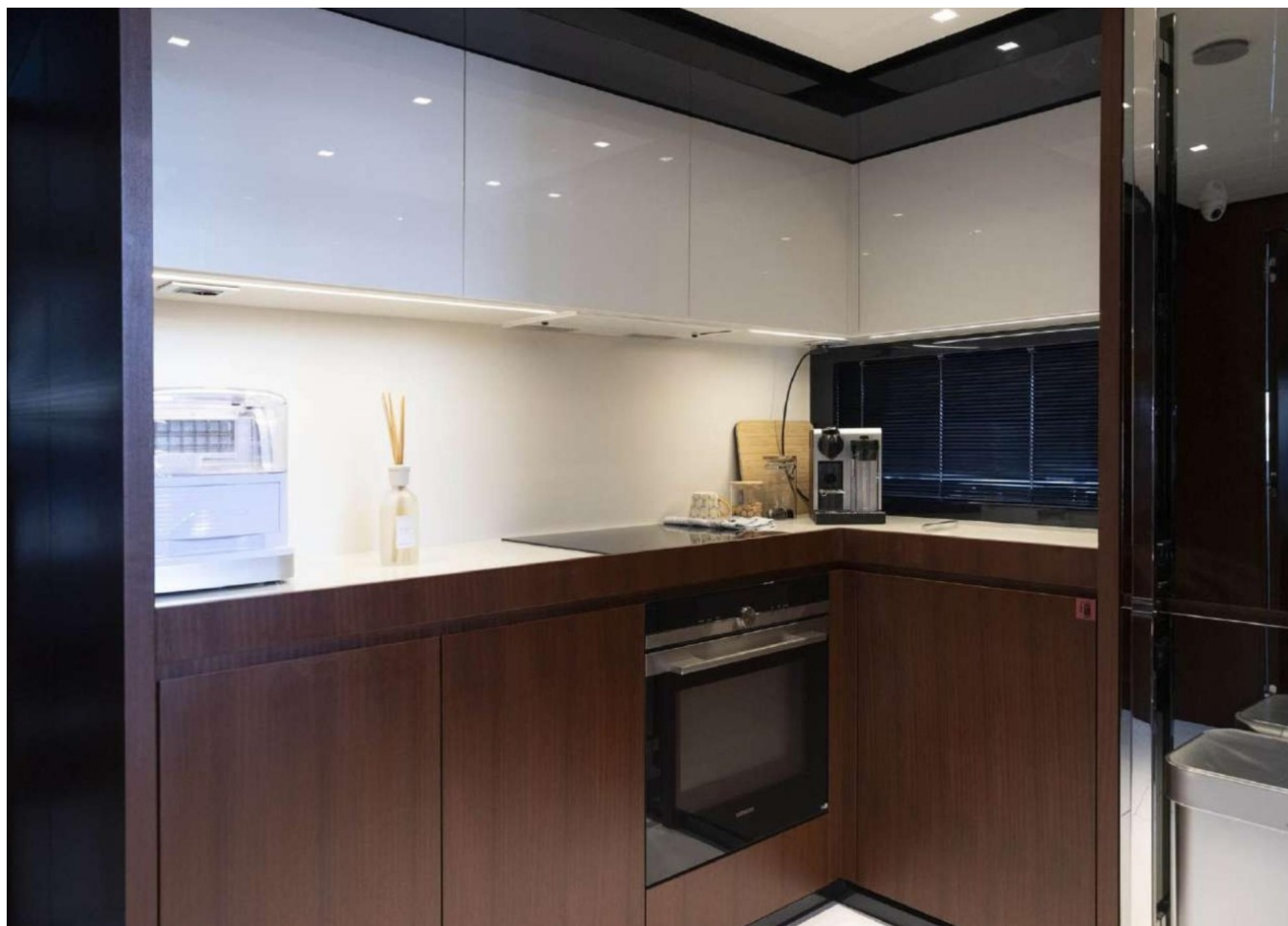
SPECIFICATIONS

Localisation	Costa Azzurra, Italy	Cabines	3
Année	2021	Moteurs	MAN V 12
Longueur	20.67 m	Puissance max	3000 hp
Largeur	5.29 m	Vitesse max	37kn
Tirant d'eau	1.8 m	Engine hours	350 m/h
Capacité en carburant	3800 l	Prix	Prix sur demande
Contenance en eau douce	330 l		



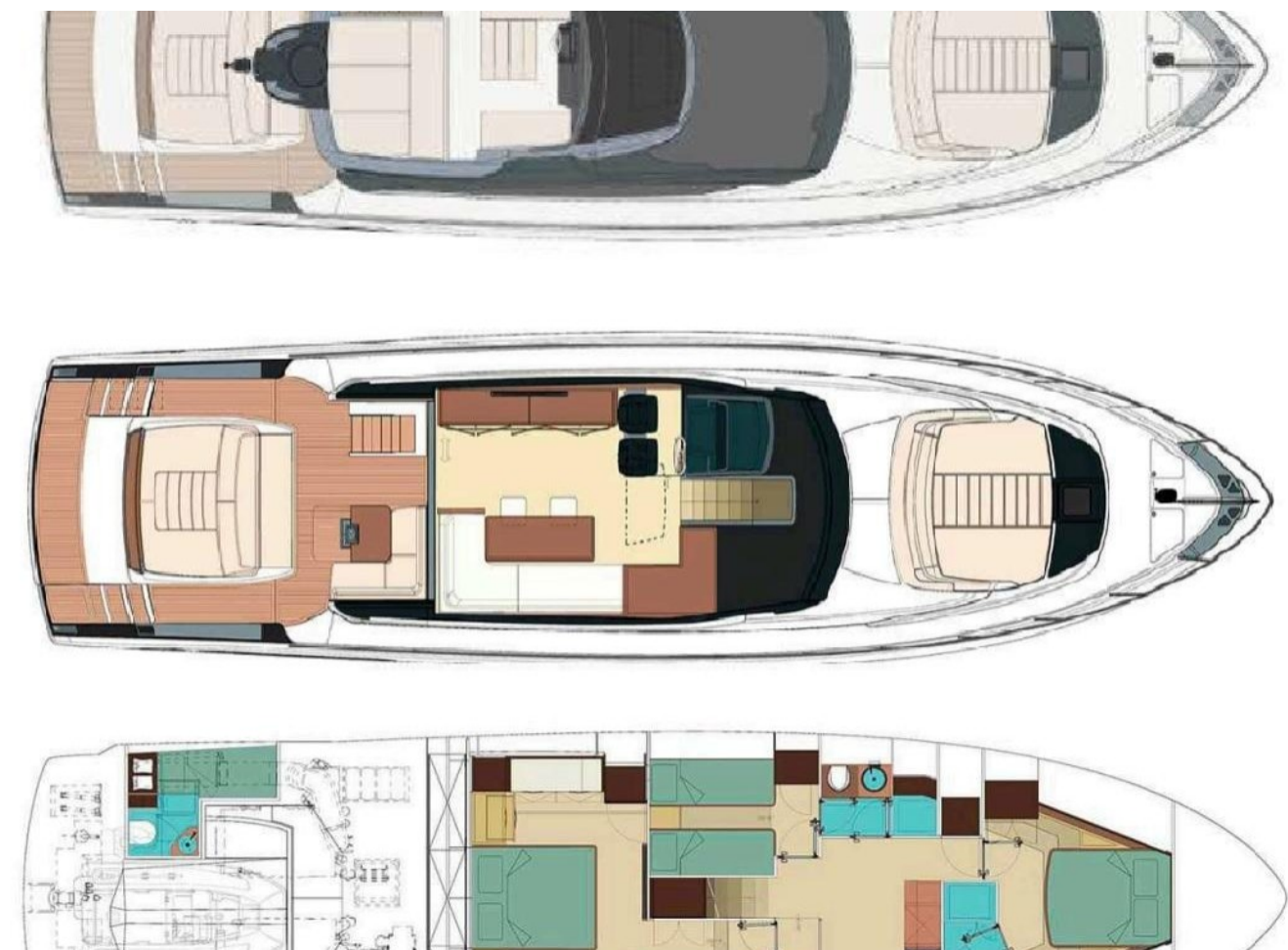












EQUIPMENT

Shore Power Inlet	Generator: Onan 12 kW
Inverter: Mastervolt 24/2025	
Electronics	
Depthsounder: SIMRAD	Radar: SIMRAD
Computer	Plotter: SIMRAD
Autopilot: SIMRAD	Compass: RITCHIE
VHF: SIMRAD	Flat Screen TV: 4 x SAMSUNG
Inside Equipment	
Stern Thruster	Dishwasher: SIEMENS
Bow Thruster	Washing Machine: MIELE + Asciugatrice MIELE
Electric Bilge Pump	Oven: SIEMENS

Manual Bilge Pump	Air Conditioning
Refrigerator	Fresh Water Maker: 130 l/h con controllo remoto su plancia di comando ponte principale
Deep Freezer	Teak Sidedecks
Hydraulic Gangway	Cockpit Cushions
Swimming Ladder	Hydraulic Bathing Platform
Underwater Lights	

2021 RIVA 66' RIBELLE | 21M

Follow Princess Yachts Monaco

