

## 2022 AZIMUT MAGELLANO 66 EVO | 20M



BROKERAGE

### SPECIFICATIONS

|                         |                |               |                  |
|-------------------------|----------------|---------------|------------------|
| Localisation            | Toscana, Italy | Cabines       | 5                |
| Année                   | 2022           | Moteurs       | MAN i850         |
| Longueur                | 20.15 m        | Puissance max | 1700 hp          |
| Largeur                 | 5.54 m         | Vitesse max   | 25kn             |
| Tirant d'eau            | 1.72 m         | Engine hours  | 646 m/h          |
| Capacité en carburant   | 4500 l         | Prix          | Prix sur demande |
| Contenance en eau douce | 1000 l         |               |                  |















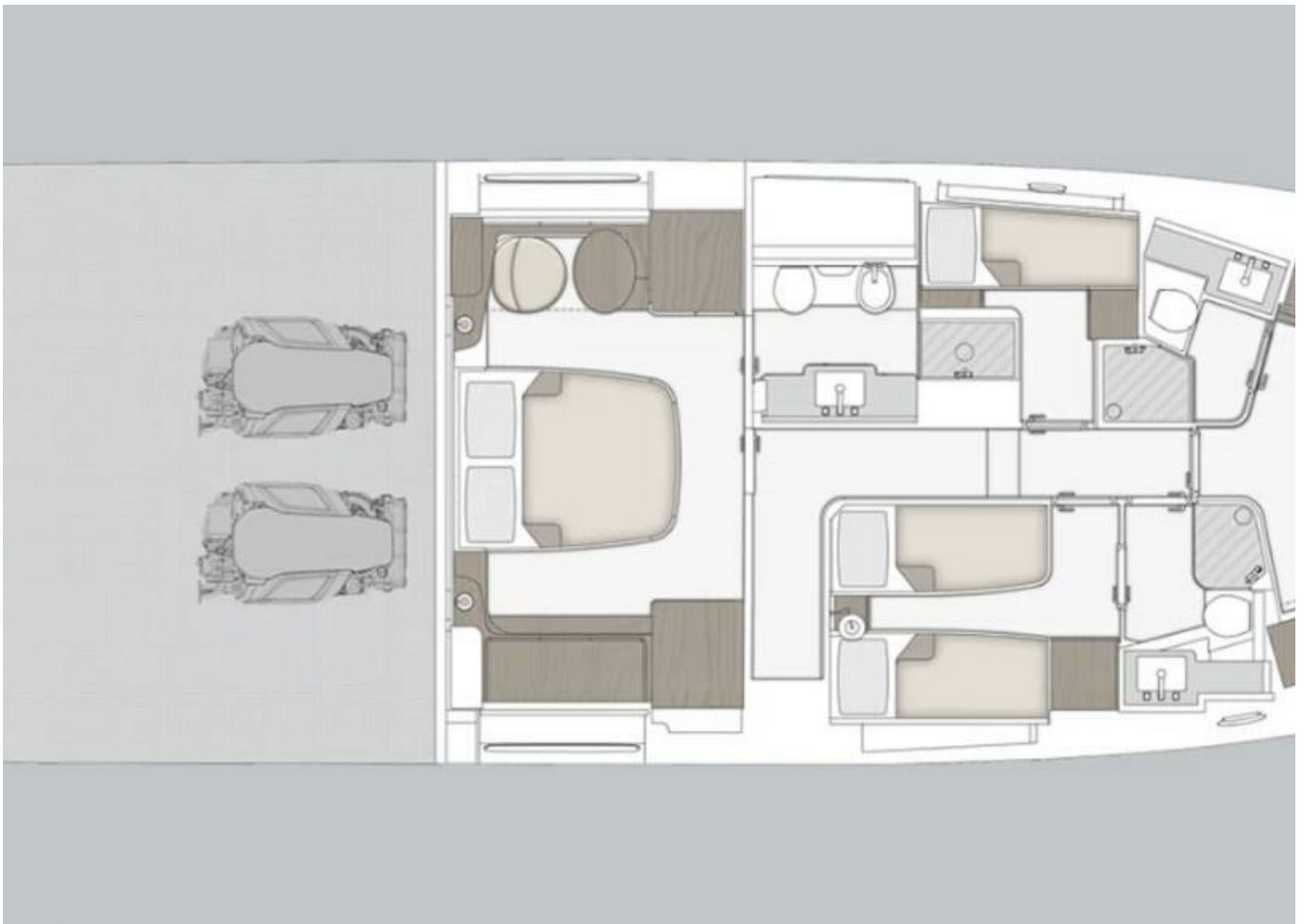












# EQUIPMENT

---

Depthsounder:Raymarine CP 100 fishfinder

Shore Power Inlet

---

Generator:1 x 19 kW - Onan

---

## Electronics

Depthsounder:Raymarine CP 100 fishfinder

Radar

### 3. TV Set:Up and down

---

AIS:Raymarine 700

#### Inside Equipment

seakeeper:Seakeeper NG16

Dishwasher:Miele

Bow Thruster:10 kW 24V with Xenta joystick

Oven:Miele

Air Conditioning:92000 BTU

Refrigerator:300 lt

Fresh Water Maker:130 l/h

Deep Freezer

Battery Charger:Qty: 2

---

#### Outside Equipment

Teak Cockpit

### 2. Teak Sidedecks

---

Radar

### 1. TV Set:Up and down

---

AIS:Raymarine 700

seakeeper:Seakeeper  
NG16

Dishwasher:Miele

Bow Thruster:10 kW  
24V with Xenta  
joystick



Oven:Miele

Air

Conditioning:92000

BTU

Refrigerator:300 lt

Fresh Water

Maker:130 l/h

Deep Freezer

2. Battery Charger:Qty:

2

---

2022

AZIMU

T

MAGEL

LANO

66 EVO

| 20M

---

Follow Princess Yachts  
Monaco

