

2024 PRINCESS F45



BROKERAGE

HIGHLIGHTS

/ BUILT 2024 - MINIMUM
HOURS

/ SEAKEEPER STABILISER

/ FULL TEAK DECKING

/ POWERED SLIDING
COCKPIT SOFA

/ ELECTRO-HYDRAULIC
BATHING PLATFORM

/ ELECTRO-HYDRAULIC
PASSERELLE

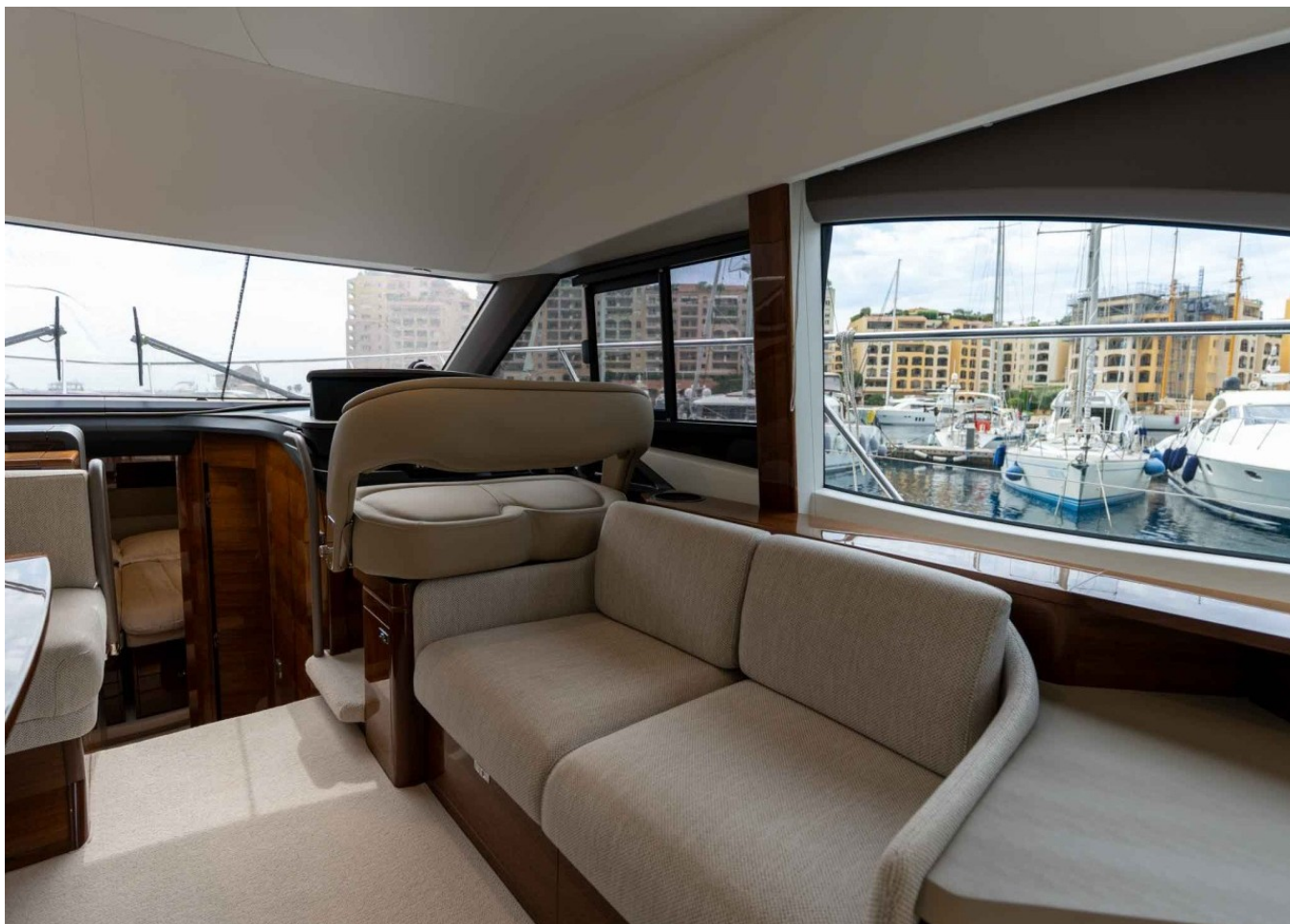
SPECIFICATIONS

Localisation	Monaco, Monaco	Cabines	2
Année	2024	Berths	4
Longueur	14.35 m	Moteurs	Volvo IPS 650
Largeur	4.25 m	Puissance max	2 x 480 hp
Tirant d'eau	1.14 m	Vitesse max	31
Déplacement	19 tonnes	Engine hours	80 m/h
Capacité en carburant	1363 l	Prix	1 207 000 € (ex VAT)
Contenance en eau douce	487 l		



















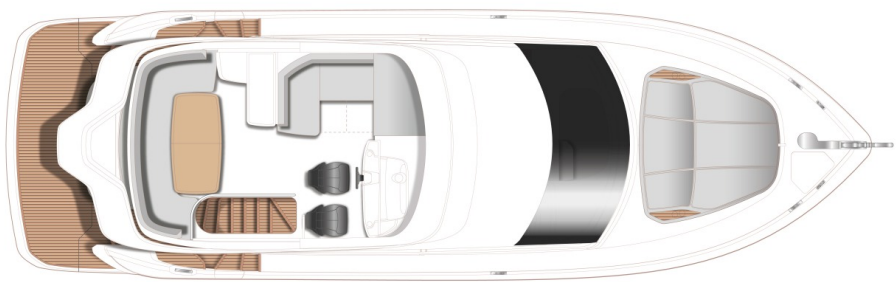




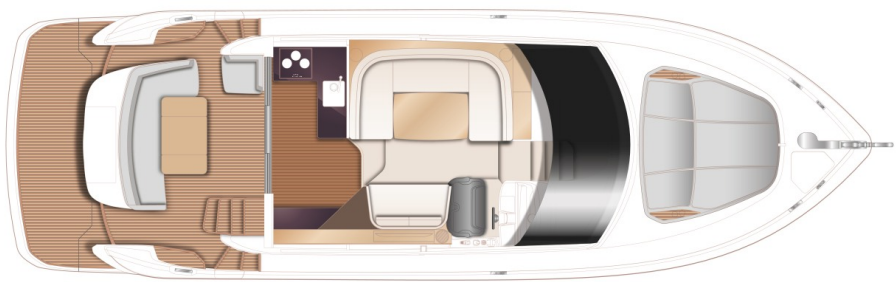




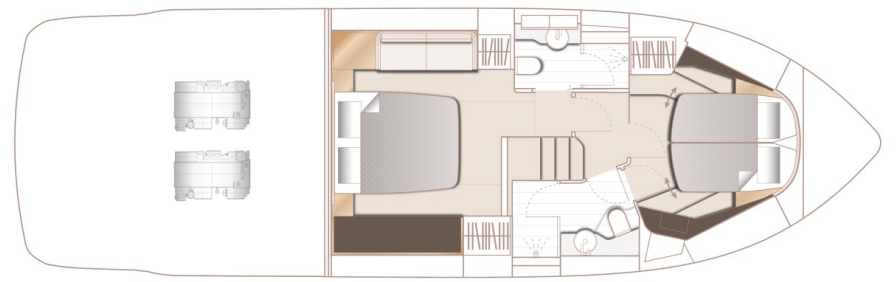
LAYOUTS



FLYBRIDGE



MAIN DECK



LOWER DECK

EQUIPMENT

Electronics

American version plotter

USA VHF

Second Volvo/Garmin 16' color multifunction display fitted at lower helm

Garmin AIS Class B transponder interfaced with chartplotters

On-board WiFi network with external WiFi and 3G/4G antenna

Volvo Dynamic Positioning System

Bow thruster (120 KgF) with dual station controls

Electrical Equipment

ONAN 9.5 kW/50Hz generator (with hydrohush exhaust system)	Reverse cycle air conditioning/heating (58,000 Btu, tropical specification)
Single Glendinning cablemaster	Windscreen demist system using warm air heater powered from calorifier
AGM 90Ah batteries (for start, domestic, and generator)	Multi sockets, in place of standard 220v/240v sockets
Electric discharge system with automated valve operation	

Performance & Handling

Gyro Stabilization (Seakeeper 6) with upper helm control via chart plotter screens	Antifoul IPS drives & propellers
--	----------------------------------

Deck & Flybridge

Hull color: White Gel Coat Finish (dark grey waterline, black antifouling, white hull & bathing platform fendering with stainless steel insert)	Teak step nosing upgrade (to include side decks)
Exterior upholstery in Met Ice with Met Macadamia contrast panels and piping	Teak with black caulking (6mm) to flybridge deck
Optional flybridge wet bar (sink, electric griddle/BBQ, waste bin, top-loading coolbox)	Teak with black caulking (6mm) to side decks (teak in cockpit – standard)
Flybridge console finished in metallic Oyster Grey	Cockpit seat with powered sliding mechanism and infill cushion (extends cockpit by 400mm)
Radar arch finished in metallic Graphite Grey (equipment mounted on radar arch left standard)	Sliding tender chock system allowing cockpit seat to move into aft position without deploying tender
Quilting detail with contrast piping and paneling to flybridge helm seats	Electro-hydraulic swimming platform (400 Kg SWL, max tender weight 150Kg) with dinghy chock system
Bimini top – Grey canvas	Electro-hydraulic passerelle (2.5m letterbox type)
Exterior covers – Grey canvas	Additional 10m of 9.5 mm anchor chain (total 50m)
Foredeck sunbed cushions with adjustable headrests	Stainless steel Ultra anchor and swivel (27kg)
Foredeck sunbed with integrated headrest and contrast flat-stitched pleat	Fit reticulated foam to all standard exterior cockpit, foredeck, and flybridge seating/sunpads
Foredeck freshwater anchor/deck wash system	

Fit reticulated foam to forward sunbed

Accommodations

Forward cabin with scissor berth conversion

Sliding window to portside of saloon

Interior furniture: Walnut wood gloss finish

Galley worktops in Carrara White solid surface

Combination washing machine/dryer (below companionway stairs in Master cabin)

Dishwasher in galley (drawer type, 6 place setting)

Ceramic electric hob (3 burner) in place of diesel hob

Mosquito screens for all opening portlights

Lighting & Additional Features

Underwater transom lights (2 LUMISHORE SMX 53 White)

Underwater lights to aft hull sides (4 LUMISHORE SMX 53 White) (2 per side)

Run all sink/shower outlets into standard grey water tank and grey water outlet into holding tank

Additional Equipment

Princess China (5-piece set) – 6 place setting

David Mellor 'Paris' Cutlery (6-piece) – 6 place setting

Princess Glasses (6 wine, 6 tumbler)

Fender socks with Princess Logo – Grey (x6)

Ecoworks for Princess – complete boat sustainable cleaning solution

2024 PRINCESS F45

+33 6 40 61 88 46 

m.st.pierre@princessyachtsmonaco.com

Follow Princess Yachts Monaco

