

2024 PRINCESS X80 | 25M



BROKERAGE

SPECIFICATIONS

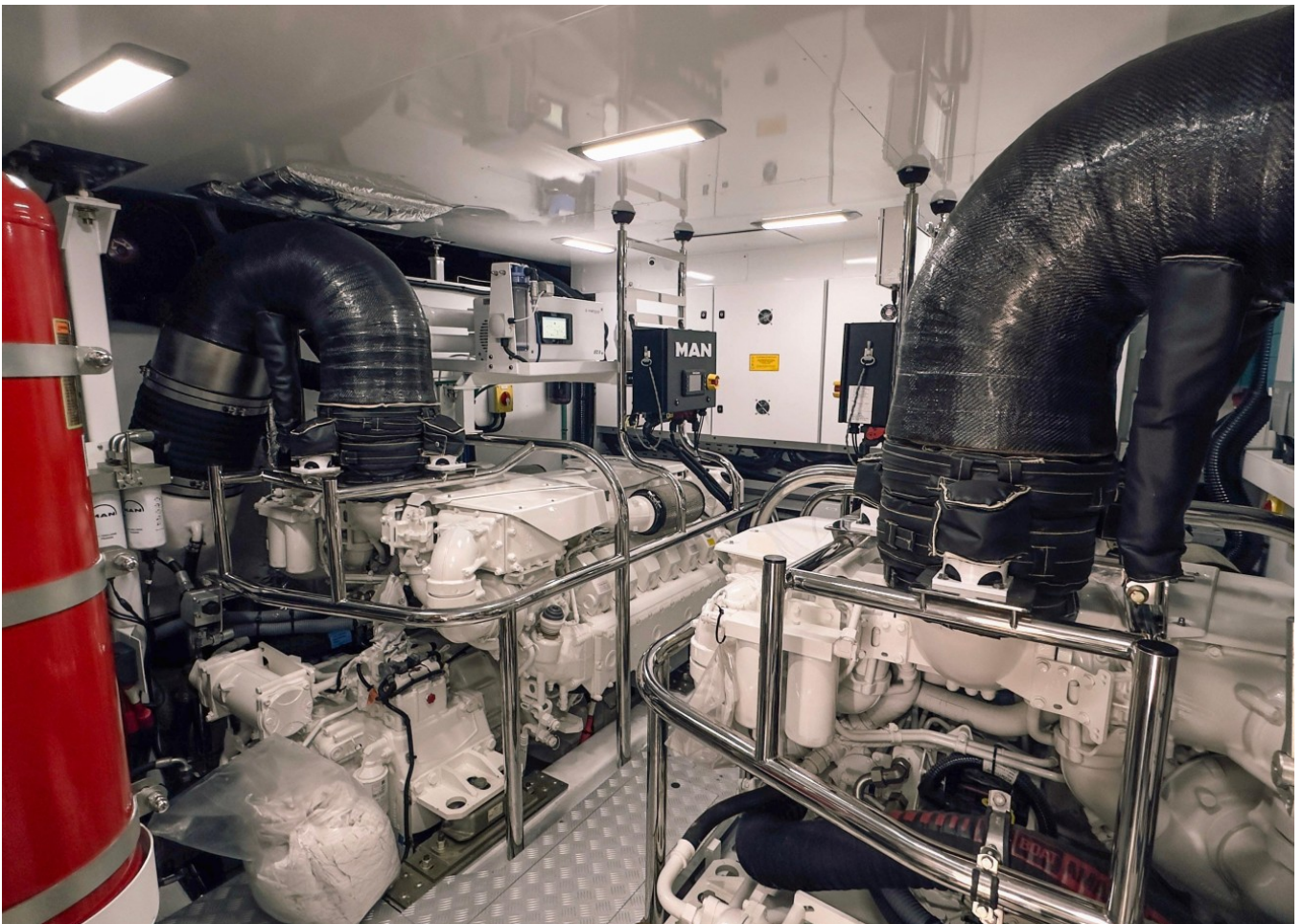
Localisation	Athens, Greece	Cabines	5
Année	2024	Moteurs	MAN V12 1650
Longueur	25.17 m	Puissance max	3300 hp
Largeur	6.07 m	Vitesse max	25kn
Tirant d'eau	1.77 m	Engine hours	119 m/h
Capacité en carburant	17000 l	Prix	Prix sur demande
Contenance en eau douce	114000 l		













EQUIPMENT

Shore Power Inlet

Inverter

Radar

Radar Detector

Computer

TV Set

VCR

DVD Player

Radio

CD Player

Generator

Depthsounder

Log-Speedometer

Wind Speed and Direction

Repeater(s)

Navigation Centre

Plotter

Autopilot

Compass

GPS

Cockpit Speakers	VHF
Flat Screen TV	Wi-Fi
AIS	Stern Thruster
Dishwasher	Bow Thruster
Washing Machine	Electric Bilge Pump
Oven	Microwave Oven
Air Conditioning	Electric Head
Heating	Hot Water
Refrigerator	Fresh Water Maker
Deep Freezer	Sea Water Pump
Battery Charger	Teak Cockpit
Cockpit Shower	Teak Sidedecks
Hydraulic Gangway	Tender
Liferaft	Cockpit Cushions
Cockpit Table	Swimming Ladder
Fin Stabilizer	Hydraulic Bathing Platform
Underwater Lights	Jacuzzi

2024 PRINCESS X80 | 25M

Follow Princess Yachts Monaco

