

PRINCESS 32M



BROKERAGE

HIGHLIGHTS

/ PRISTINE CONDITION
/ VAT PAID
/ 4 CABINS
/ REFIT 2021-2022
/ WIFI ON BOARD

/ FULL TV/AV EQUIPMENT
/ WILLIAMS 505D TENDER
/ FIN STABILISERS
/ MORE INFO UPON REQUEST

SPECIFICATIONS

Localisation	After request
Année	2013
Longueur	32 m
Largeur	7.11 m
Tirant d'eau	1.85 m
Capacité en carburant	12700 l
Contenance en eau douce	2200 l

Cabines	4
Berths	8
Moteurs	MTU 16V M94
Puissance max	2 x 2637 hp
Vitesse max	23 +
Prix	6 500 000 € (inc VAT)

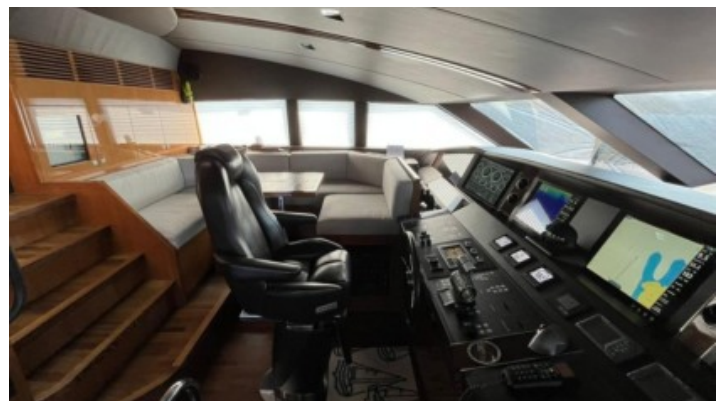
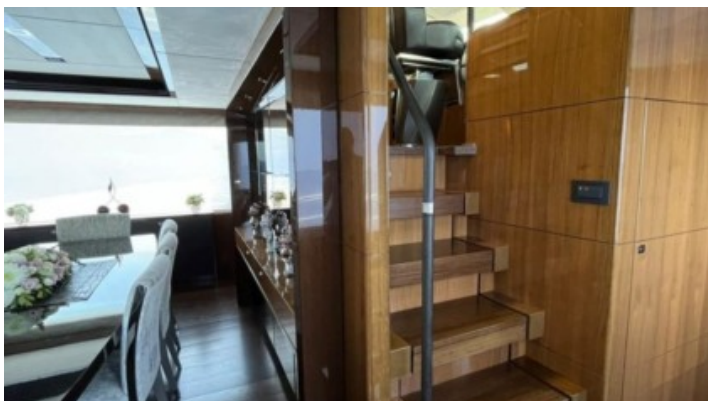
EQUIPMENT

Refit 2021-2022	Trolling system for main engines
Hull painting	Remote control of main engines and thrusters
Replacement control screen Böning	Bar in the cockpit
Navigation system replacement	Two stainless steel anchors
Replacing carpet with parquet in the salon and on the stairs – 2021	Underwater lighting under the swimming platform
Overhaul of generators	Jacuzzi on flybridge
New sofas in salon	Multimedia system with satellite TV integrated into Smart Home and night vision system
New satellite TV and internet system	Marble work surfaces and floors in all bathrooms (heated)
New music system	Electric Venetian blinds in salon and master cabin
Replacing teak decking	Shower with steam generator in Master cabin
Replacing lighting lamps with LED	River-type radio signal system
Equipment	Professional kitchen equipment with wine cooler
Hull color – Super Jet Black	Christofle cutlery and accessories set, Hermes crockery
Polished walnut interior	GSM Wi-Fi router with various connection options
The color of the superstructure and all elements of the external furniture of the yacht is Silver	SUMMIT teak furniture set
Interior and furniture by Fendy	A set of rescue equipment as required by the register
Layout with four cabins	Water jet tender Williams 505D
Electric Hard Top	
Fin type digital pitch stabilization system	

EXTERIOR



INTERIOR



LAYOUTS



FLYBRIDGE



MAIN DECK



LOWER DECK

Yachts on the commission of Princess Yacht Monaco. The Company is not responsible for the accuracy of the information provided by the Shipowner (images used, yacht specifications, parameters, engine performance, legal design issues). The operating time of the engines is indicated at the time of preparation of the information and may change during further operation. The need for an inspection remains at the discretion of the Buyer. Exact parameters and characteristics can be specified in the contract of sale. Additional information is available from the manager on request.