

PRINCESS F55



SPECIFICATIONS

| | |
|-------------------------|--------------------------|
| Localisation | United Kingdom, Plymouth |
| Longueur | 17.60 m |
| Largeur | 4.87 m |
| Tirant d'eau | 1.46 m |
| Déplacement | 25 tonnes |
| Capacité en carburant | 2750 l |
| Contenance en eau douce | 608 l |

| | |
|---------------|-------------------|
| Cabines | 3+1 |
| Berths | 6+1 |
| Moteurs | 2 x Volvo D13-800 |
| Puissance max | 2 x 800 hp |
| Vitesse max | 33 + |
| Prix | Prix sur demande |

EQUIPMENT

DECK FITTINGS

| |
|--|
| Teak-laid transom platform, cockpit deck, flybridge stairway and steps to side decks |
| Self-stowing 25kg/55lb Delta anchor with 40m of chain |
| Reversible electric anchor winch with foredeck, helm position and flybridge controls |
| Stainless steel cleats, fairleads and handrails |
| Freshwater deck/anchor wash |
| Foredeck seating and sunbathing area |
| Storage lockers for fenders and ropes |
| LED deck level lighting |

COCKPIT

| |
|--|
| U-shaped seating with folding teak table |
| Twin transom gates leading to bathing platform (with optional electro-hydraulic raise/lower mechanism and dinghy chock system) |
| Transom bathing platform with foldaway swimming ladder and hot and cold shower |
| Lockable gas strut assisted hatches to engine room, lazarette/optional crew cabin |
| Locker housing 220/240v shore support inlet |
| Cockpit cover |

FLYBRIDGE

| |
|---|
| Dual station instrumentation, controls and alarm system including VHF/RT, speed and distance log, echo sounder with alarm and autopilot |
| Large U-shaped seating area with folding teak table |
| L-shaped seat (converts to a sunbed) |
| Twin helm seats with fore and aft adjustment for helmsman |
| Wetbar with sink, storage and optional barbecue |
| Refrigerated top loading coolbox |
| Radio/MP3 with waterproof speakers |
| Liferaft storage |
| Console and seat covers |

LOWER HELM POSITION

| |
|--|
| Twin helm seats with fore and aft adjustment for helmsman |
| Electric opening window |
| Full engine instrumentation including fuel gauges, exhaust temperature and engine warning system and rudder position indicator |

| |
|--|
| Navigation system including VHF/RT, speed and distance log, echo sounder with alarm, autopilot and high speed magnetic compass |
| Controls for joystick, bow thruster, windscreen wipers, bilge pump and trim tabs with indicators |
| 24v and 240v control panel |
| Red night lighting |

DECK SALOON

| |
|--|
| Stainless steel framed sliding doors to aft cockpit with integrated opening window aft of galley |
| U-shaped sofa with folding dining table or coffee table |
| Two-seater sofa |
| 49" UHD LED TV with electric raise/lower mechanism |
| Stereo radio/DVD/MP3 player |
| Sideboard unit with bottle and glass storage and refrigerator |
| Crockery storage drawer |

GALLEY

| |
|--|
| 4-zone ceramic hob |
| Hob extractor |
| Combination microwave/convection oven with grill |
| Stainless steel sink with mixer tap |
| Full-height fridge/freezer |
| Storage cupboards, drawers and lockers |

ACCOMMODATION

| |
|---|
| All cabins and bathrooms feature opening portholes |
| All cabins feature 220/240v power points |
| All mattresses pocket sprung (excluding crew) |
| All bathrooms feature full shower stalls, electric freshwater toilets, extractor fan and 240v shaver points |

OWNER'S STATEROOM

| |
|-------------------------------------|
| Large double bed with drawers below |
| Wardrobe with shelves |
| Dressing table |
| Radio/MP3 player |
| Storage lockers and drawers |
| En suite bathroom |

FORWARD STATEROOM

| |
|-------------------------------------|
| Large double bed with drawers below |
|-------------------------------------|

Information provided by the shipowner (images used).

| |
|-----------------------------------|
| Wardrobe with shelves |
| Vanity unit |
| Storage lockers |
| Deck hatch |
| En suite bathroom with day access |

STARBOARD GUEST CABIN

| |
|--|
| Two single beds with drawers below (with option of sliding berths) |
| Wardrobe with shelves |
| Storage lockers and drawers |

OPTIONAL AFT CABIN

| |
|-------------------------------------|
| Single bed with storage below |
| Wardrobe with shelf |
| En suite bathroom with stall shower |

INTERIOR FINISH

| |
|--|
| Furniture in Rovere Oak with satin or high gloss finish. Walnut or Alba Oak available as an option |
| Solid surface worktops and tiled floors in all guest bathrooms |
| Solid surface worktop and timber-laid floor in galley |
| Choice of high quality carpet and upholstery fabric from extensive range |
| Blinds or sunscreens to all windows and portholes |
| Optional crew cabin fitted with non slip safety flooring |

POWER AND DRIVE SYSTEMS

| |
|---|
| 4-bladed propellers in nickel aluminium bronze |
| Bow thruster (130kgf/287lbf) |
| Power-assisted electro-hydraulic steering system with hydraulic back-up |
| Electronic engine and gear shift controls |
| Electronic engine controls |
| Dripless shaft seals |
| Engine room extractor fan with electronic time delay |

ELECTRICAL SYSTEMS

24 Volt:

| |
|--|
| 4 x heavy duty batteries for engine starting |
| 4 x heavy duty auxilliary batteries |
| 60 amp battery charger charges both banks of batteries via an automatic switch charging system |

yacht specifications, parameters, engine performance, legal design issues). The operator and may change during further operation. The need for an inspection remains at the discretion of the Buyer. Exact parameters and characteristics can be specified in the contract of sale. Additional information is available from the manager on request.

| |
|--|
| Remote battery master switches with control switch at main panel |
| LED lighting throughout |

220/240 Volt:

| |
|---|
| 9.5kW diesel generator in own sound shield with water cooled specially silenced exhaust |
| 50 amp shore support inlet |
| Earth leakage safety trip, polarity check system, circuit breakers on all circuits |
| Power points in all areas |

FUEL SYSTEM

| |
|---|
| Twin fuel tanks (in NS8 marine grade alloy) with interconnection system giving 605 gal/726 US gal/2,750l capacity |
| Fuel fillers on port and starboard side decks |
| High capacity duplex fuel filters/water traps with audible and visual fuel contamination warning system |
| Remote fuel isolation controls in cockpit locker |

WATER SYSTEM

| |
|---|
| 118 gal/141 US gal/535l plus 16 gal/19 US gal/73l hot water calorifier, heated by engines and 240v immersion heater |
| Water level gauge |
| Deck filler |
| Electric freshwater WC system with 69 gal/83 US gal/315l holding tank |

FIRE EXTINGUISHERS

| |
|--|
| Automatic/manual override fire extinguishers in engine room with warning system at both helm positions |
| Hand-operated fire extinguishers in all cabins, galley and lower helm (5) |

BILGE PUMPS

| |
|--|
| Automatic electric bilge pumps (5) |
| High capacity manual bilge pump with valve system and suction points in same areas |

OTHER ITEMS SUPPLIED AS STANDARD

| |
|--|
| Quilted bedspreads supplied to all cabins (except optional crew) |
| Ensign staff |
| Fenders (6) and wraps (4) |
| First aid kit |
| Set of manuals |
| Tool kit |

EXTERIOR

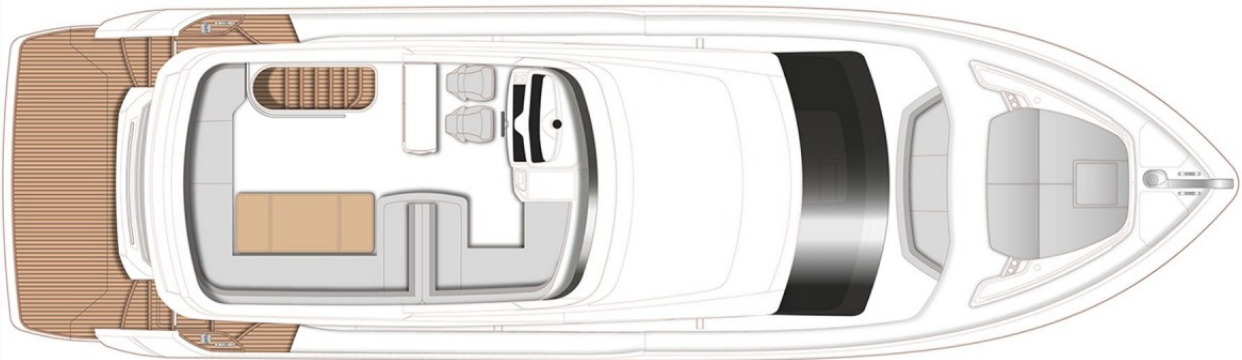


Yachts on the commission of Princess Yacht Monaco. The Company is not responsible for the accuracy of the information provided by the Shipowner (images used, yacht specifications, parameters, engine performance, legal design issues). The operating time of the engines is indicated at the time of preparation of the information and may change during further operation. The need for an inspection remains at the discretion of the Buyer. Exact parameters and characteristics can be specified in the contract of sale. Additional information is available from the manager on request.

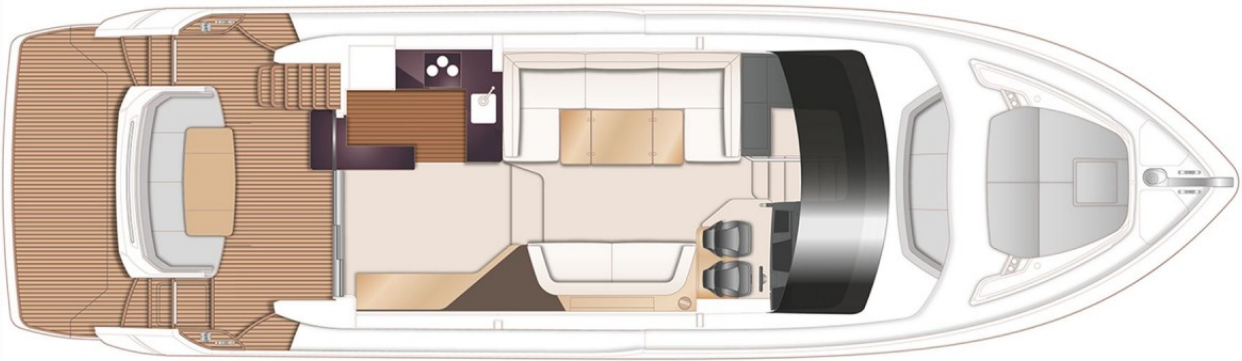
INTERIOR



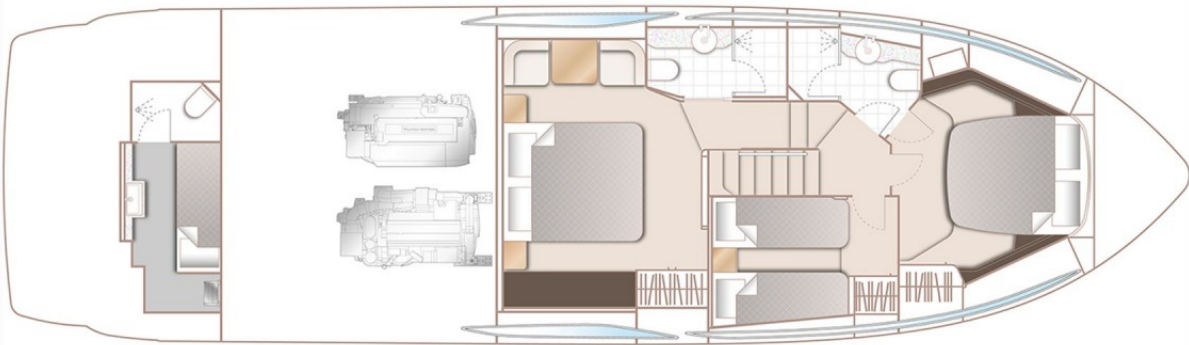
LAYOUTS



FLYBRIDGE



MAIN DECK



LOWER DECK

Yachts on the commission of Princess Yacht Monaco. The Company is not responsible for the accuracy of the information provided by the Shipowner (images used, yacht specifications, parameters, engine performance, legal design issues). The operating time of the engines is indicated at the time of preparation of the information and may change during further operation. The need for an inspection remains at the discretion of the Buyer. Exact parameters and characteristics can be specified in the contract of sale. Additional information is available from the manager on request.