

## PRINCESS F45 (2024)



STOCK

### HIGHLIGHTS

/ AVAILABLE IN STOCK

### SPECIFICATIONS

Localisation	After request	Cabines	2
Année	2024	Berths	4
Longueur	14.15 m	Moteurs	Twin Volvo Penta IPS 650
Largeur	4.25 m	Puissance max	2 x 480 hp
Tirant d'eau	1.09 m	Vitesse max	31
Déplacement	16 tonnes	Engine hours	Contact seller
Capacité en carburant	1300 l	Prix	Prix sur demande
Contenance en eau douce	455 l		











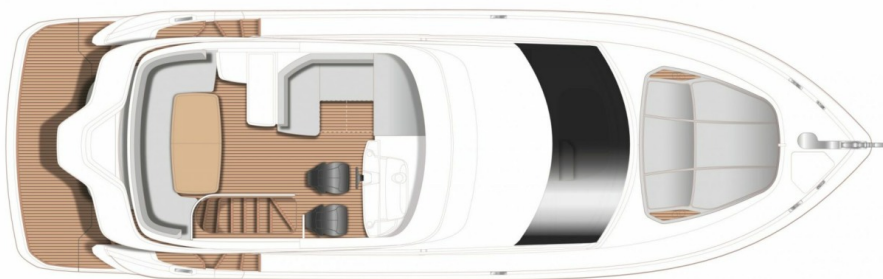






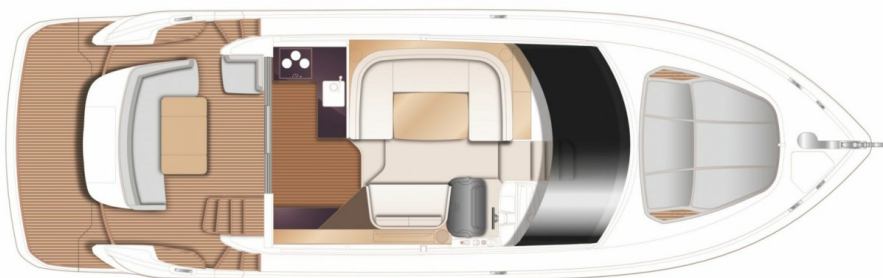
## LAYOUTS

---



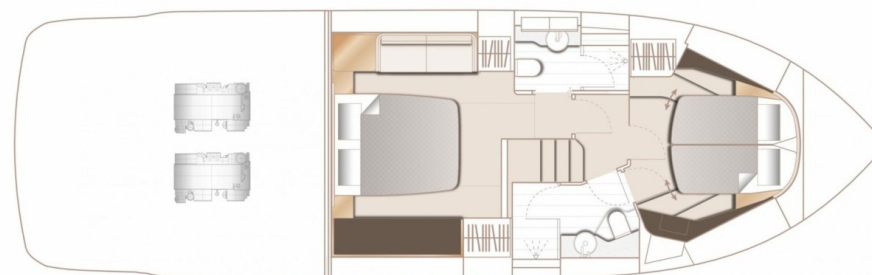
FLYBRIDGE

---



MAIN DECK

---



LOWER DECK

---



---

## PRINCESS F45 (2024)

+33 6 40 61 88 46   
m.st.pierre@princessyachtsmonaco.com

---

Follow Princess Yachts Monaco

