

PRINCESS F50 (2022)



2022 RESTYLED F50 WITH LOW HOURS

HIGHLIGHTS

- / 3 CABINS + ADDITIONAL DOUBLE BERTH VIA DINING TABLE CONVERSION
- / BOWTHRUSTER WITH DUAL STATION CONTROLS
- / ELECTRO-HYDRAULIC BATHING PLATFORM
- / ELECTRIC STERN DOCKING WINCHES
- / ONAN 11KW GENERATOR
- / AIRCONDITIONING
- / WATERMAKER
- / STARLINK SATELLITE SYSTEM
- / SEAKEEPER 6

SPECIFICATIONS

Localisation	Fontvieille, Monaco	Cabines	3
Année	2022	Berths	6
Longueur	15.56 m	Moteurs	Volvo D8 IPS 800
Largeur	4.34 m	Puissance max	2 x 600 hp
Tirant d'eau	1.26 m	Vitesse max	36
Déplacement	19.2 tonnes	Engine hours	320 m/h
Capacité en carburant	1850 l	Prix	1 150 000 € (ex VAT)

The yacht is on the commission of Princess Yacht Monaco. The Company is not responsible for the accuracy of the information provided by the Yacht owner (in pages specification parameters, performance, legal, etc). The operating time of the engines is indicated at the time of preparation of the information and may change during further operation. The need for an inspection remains at the discretion of the Buyer. Exact parameters and characteristics can be specified in the contract of sale. Additional information is available upon request.





GALLERY









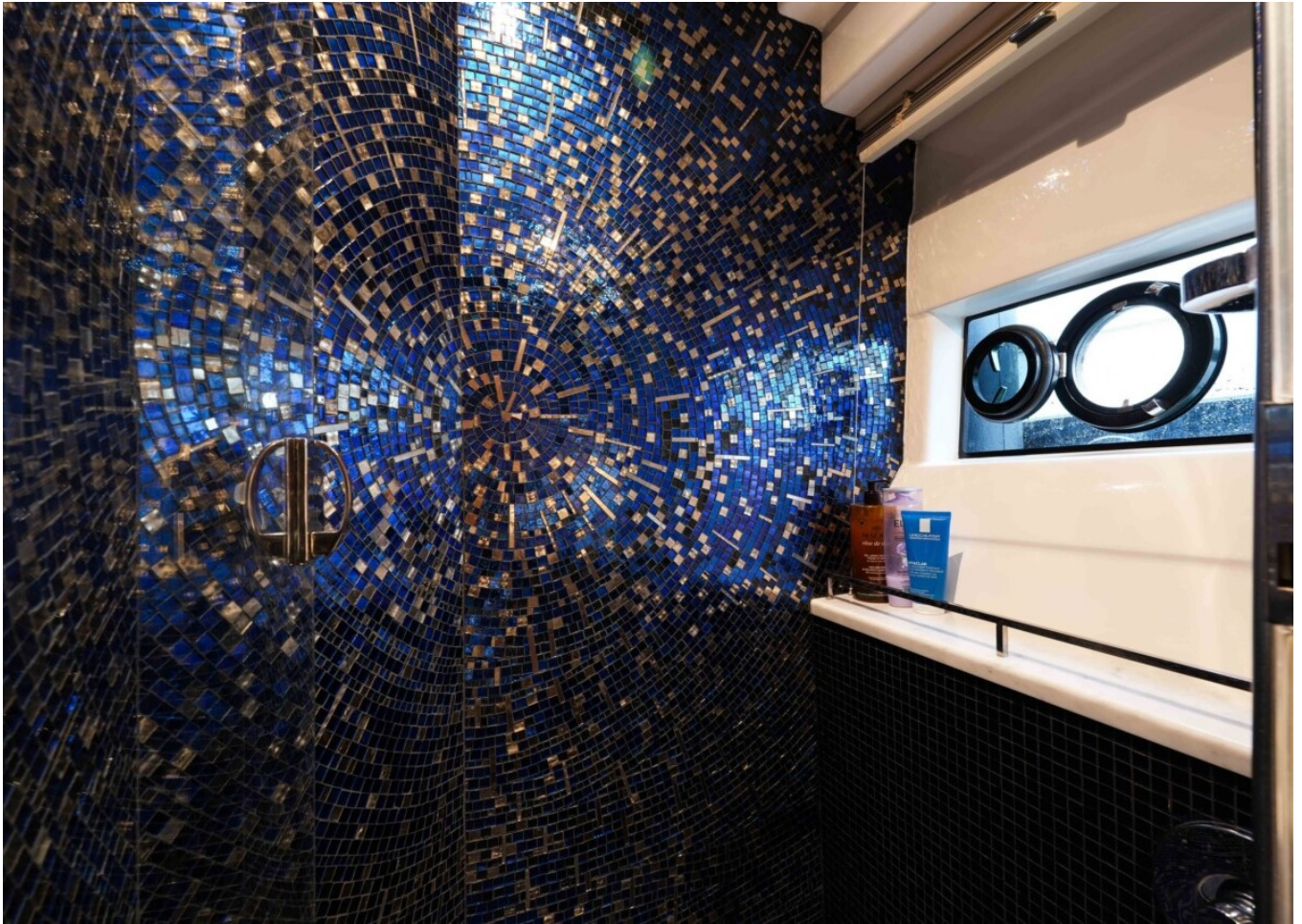










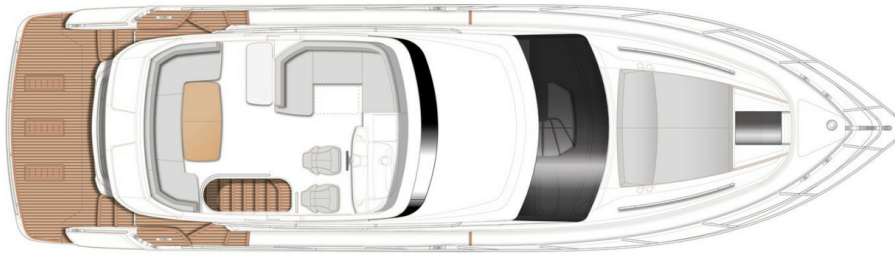




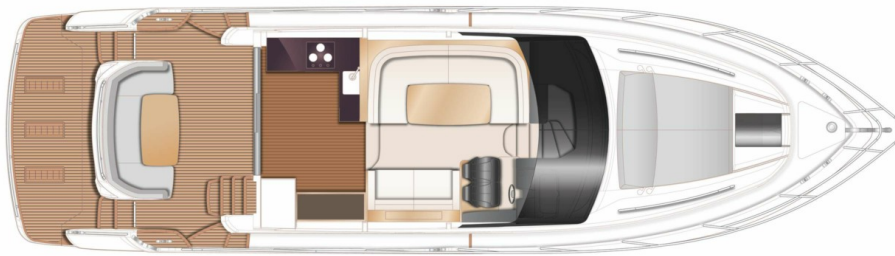




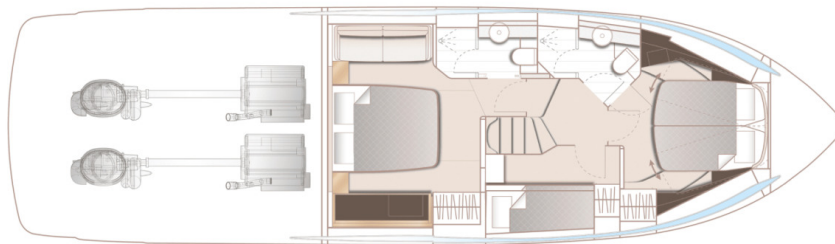
LAYOUTS



FLYBRIDGE



MAIN DECK



LOWER DECK

EQUIPMENT

HULL

White hull

DECK EQUIPMENT

Reticulated foam to all standard exterior cockpit and flybridge seating and sunpads

Passerelle (2.9m telescopic letterbox type)
Third station controls in cockpit

Electro-hydraulic raise/lower transom platform with dinghy chock system

INTERIOR EQUIPMENT

Full height fridge/freezer (270ltr)

Dishwasher (drawer type, 6 place setting)

Icemaker fitted in aft saloon sideboard

Combination washing machine/dryer (fitted below companionway stairs)

Small drinks fridge in galley

Electric stern docking winches

Exterior covers in Dark Blue canvas

Foredeck sunbed with cushions and adjustable headrests

Stainless steel anchor with 50 metres anchor chain

Foredeck freshwater anchor/ deckwash system

Flybridge with aft U-shaped seating area and forward L- shaped seating to port which converts to a sunbed

Electro hydraulic bimini top in Dark Blue canvas with LED overhead dimmable lighting

Flybridge wet bar incorporating sink, electric griddle/BBQ and storage

Flybridge twin helm seating

Flybridge console painted in metallic Oyster Grey Underwater transom lights (2 Lumishore SMX53 White) Teak laid decks

Teak step nosings upgrade (includes transom, flybridge, and foredeck)

SHIP'S SYSTEMS

Onan 11kW generator with hydrohush exhaust system

Reverse cycle air-conditioning/heating with outlets in all cabins & bathrooms and additional 50A shore supporting

Seakeeper 6

Bow thruster (120Kgf) with dual station controls

Watermaker

Water filtration system and water softener (chemical dosing unit, lters, UV treatment, water softener)

Volvo Automatic Interceptor trim tabs

AGM 90Ah batteries in place of standard (for

AUDIO VISUAL EQUIPMENT

Starlink Satellite for fast internet

NAVIGATION EQUIPMENT

Garmin XHD colour radar with 24' 4kW Radome

Second Volvo/Garmin 16' colour multifunction display fitted at lower helm position

Garmin GMI 20 4' multifunction display at lower helm

Second Volvo/Garmin 16' colour multifunction display at the upper helm

Garmin (GMI 20 colour) 4' multifunction display at the upper helm Garmin

AIS 800 Class 8 Transponder European version plotter charts International VHF

PREMIUM AUDIO SYSTEM - Incorporates:

Deck Saloon - 43' LED TV on a power lift mechanism, Fusion Apollo RA-770 with AM/FM/Bluetooth/Wi/DAB and external USB paired Focal speakers (4) & subwoofer

Owners Stateroom - 32' LED TV, Fusion Apollo RA-770 with AM/FM/ Bluetooth/WiFi/DAB and external USB, paired with Focal speakers (4) & subwoofer

Forward guest cabin - 24' LED TV with a Fusion Apollo MS- RA670 with DAB and external USB, paired with Fusion speakers (2)

Cockpit - waterproof Fusion speakers (2) linked to the saloon audio unit, with local control (Fusion SRX-400)

Flybridge - Fusion SRX-400 radio/Wi/ Bluetooth paired with Fusion speakers (2) linked to saloon audio unit

start and domestic and generator batteries)

INTERIOR FITOUT

Walnut interior wood satin nish

Carrara White galley worktop

Timber ooring random block 10 in forward
saloon & helm

Italian (SICIS) mosaic tiling in bathrooms

Saloon with U-shaped sofa

Dining table for 6 guests, which can also
convert to a comfortable double berth

Three cabins accommodating up to 6 guests

Full beam master stateroom with large double
bed Forward stateroom with scissor berths

Twin guest cabin

Lower accommodation carpet

Mosquito screens for all opening portlights
Premium fabrics

PRINCESS F50 (2022)

+33 6 40 61 88 46 

m.st.pierre@princessyachtsmonaco.com

Follow Princess Yachts Monaco

