

## PRINCESS F58



STOCK

## HIGHLIGHTS

/ ALL NEW

/ IN STOCK

## SPECIFICATIONS

Localisation	After request	Cabines	3
Année	2022	Berths	6
Longueur	18.2 m	Moteurs	MAN V8
Largeur	4.90 m	Puissance max	2 x 1000 hp
Tirant d'eau	1.54 m	Vitesse max	31
Déplacement	78 tonnes	Engine hours	Contact seller
Capacité en carburant	3300 l	Prix	Prix sur demande
Contenance en eau douce	630 l		













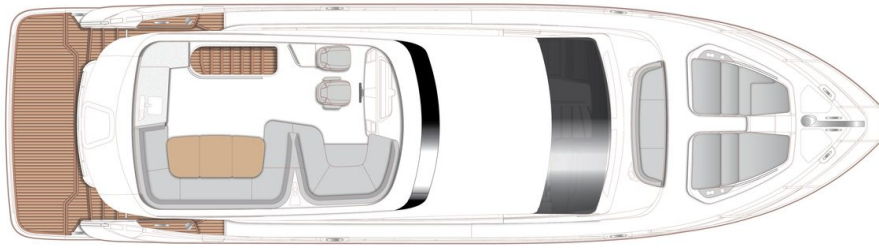






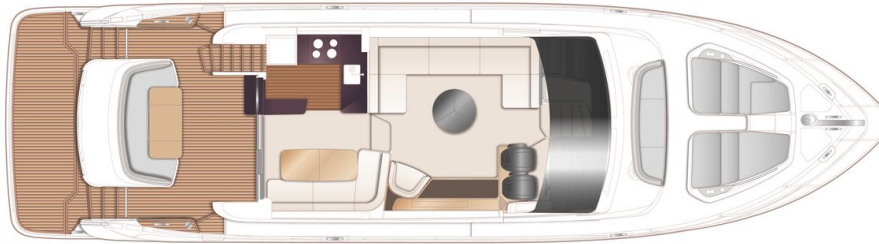
## LAYOUTS

---



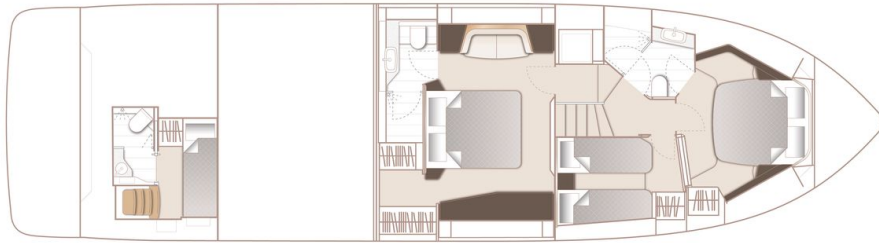
FLYBRIDGE

---



MAIN DECK

---



LOWER DECK

---

## EQUIPMENT

---

### DECK FITTINGS

Teak-laid transom platform, transom steps, cockpit deck, flybridge stairway and steps to side deck

---

Reversible electric anchor winch with foredeck and main helm controls

---

Stemhead roller with automatic anchor launch and retrieve

---

Self-stowing anchor system incorporating one 32kg galvanised Lewmar Delta anchor with 40m of 9.5mm galvanised anchor chain

---

Deck hatch access to chain locker - 2 lockers forward

---

Teak-laid transom platform, transom steps, cockpit deck, flybridge stairway and steps to side deck

---

Reversible electric anchor winch with foredeck and main helm controls

---

Stemhead roller with automatic anchor launch and retrieve

---

Self-stowing anchor system incorporating one 32kg galvanised Lewmar Delta anchor with 40m of 9.5mm galvanised anchor chain

---

Deck hatch access to chain locker - 2 lockers forward

---

Stainless steel fairleads, with chafing plates (1 pair)

---

Stainless steel bow, stern and spring cleats, with chafing plates (4 pairs)

---

Stainless steel pulpit and guard rails

---

PVC rubbing band with stainless steel insert

---

LED deck level lighting

---

Illuminated crown logo on transom

---

Full set of IMO navigation lights

---

Riding light

---

Searchlight with remote controls

---

Loudhailer (connected to VHF)

---

Twin electric horns

---

Ensign socket

---

Fuel and water fillers (one per side)

---

Black water holding tank dockside discharge connection

---

Foredeck escape hatch

---

Foredeck seating area with fender storage and drink holders (2)

---

Foredeck sunbathing area incorporating fixed twin sunpads with integrated storage and drink holders (4)

---

Foredeck sunpad covers

---

Portside fender storage locker

---

## **COCKPIT AND BATHING PLATFORM**

Self-draining

---

Fixed bathing platform

---

Upholstered U-shaped seating

---

Stainless steel fairleads, with chafing plates (1 pair)

---

Stainless steel bow, stern and spring cleats, with chafing plates (4 pairs)

---

Stainless steel pulpit and guard rails

---

PVC rubbing band with stainless steel insert

---

LED deck level lighting

---

Illuminated crown logo on transom

---

Full set of IMO navigation lights

---

Riding light

---

Searchlight with remote controls

---

Loudhailer (connected to VHF)

---

Twin electric horns

---

Ensign socket

---

Fuel and water fillers (one per side)

---

Black water holding tank dockside discharge connection

---

Foredeck escape hatch

---

Foredeck seating area with fender storage and drink holders (2)

---

Foredeck sunbathing area incorporating fixed twin sunpads with integrated storage and drink holders (4)

---

Foredeck sunpad covers

---

Portside fender storage locker

---

Self-draining

---

Fixed bathing platform

---

Upholstered U-shaped seating

---

Folding teak dining table with cup holders (4)	Folding teak dining table with cup holders (4)
Stainless steel handrails	Stainless steel handrails
LED overhead and deck level lighting	LED overhead and deck level lighting
Integral stairway to flybridge with teak-laid step treads	Integral stairway to flybridge with teak-laid step treads
LED lighting to step faces	LED lighting to step faces
Life raft storage locker under flybridge stairs	Life raft storage locker under flybridge stairs
Rope storage	Rope storage
Lockable gas strut assisted hatch to lazarette/engine room	Lockable gas strut assisted hatch to lazarette/engine room
Locker containing remote fuel cocks, manual bilge pump with valve chest and manual controls for automatic fire extinguishers	Locker containing remote fuel cocks, manual bilge pump with valve chest and manual controls for automatic fire extinguishers
Transom top locker	Transom top locker
Twin transom gates leading to bathing platform	Twin transom gates leading to bathing platform
Hot and cold flatwash transom shower	Hot and cold flatwash transom shower
220/240v shore support inlet	220/240v shore support inlet
Cockpit cover	Cockpit cover

## LOWER HELM

Twin leather upholstered manual seat with fore and aft adjustment for helmsman	Dual station instrument and controls console at lower helm
Instrument console with controls incorporating engine instruments and fuel gauges	
- 16" colour MFD incorporating GPS/chartplotter, log, echo-sounder	
Drink holders (3)	Bilge pump controls with visual pump running warnings
Electric drop window (starboard)	24v and 240v electrical control panel
Toughened glass screen (clear for night vision)	Riding light, helm and navigation light control switches
Windscreen wipers with freshwater windscreen wash	USB charging points (2) (USB-A and USB-C)

Glove box to portside dash	LED overhead lighting (24v) and night lighting
Exterior black mesh windscreen covers	Fitted carpet
<ul style="list-style-type: none"> <li>- 9" MFD screen displaying engine instrumentation (including fuel levels and fuel flow)</li> <li>- Power-assisted electro-hydraulic steering</li> <li>- Adjustable steering wheel</li> <li>- High-speed magnetic compass</li> <li>- Electronic engine controls</li> <li>- Trim tab controls with indicators</li> <li>- Bow thruster control</li> <li>- Electric anchor winch remote control</li> <li>- Autopilot</li> <li>- Speed and distance log</li> <li>- Echo sounder with alarm</li> <li>- VHF with DSC R/T with intercom</li> <li>- Remote control searchlight</li> <li>- Horn button (to operate twin electric horns)</li> <li>- Audible and visual alarm engine warning system</li> <li>- Audible and visual alarm for bilge pumps</li> <li>- Engine room fire extinguisher warning system</li> <li>- Footrest</li> </ul>	
Dual station instrumentation and controls (see Lower Helm Position)	Small U-shaped seat (starboard), with conversion to sunpad
Power assisted electro-hydraulic steering with adjustable steering wheel	U-shaped upholstered seating area (starboard)
Wind deflector screens	Drink holders (8)
Twin manual helm seats with fore and aft adjustment for helmsman	Folding teak table with drink holders (4)
Audible and visual alarm for bilge pumps	Servery with sink, storage, electric barbecue and bin
Engine room fire extinguisher warning system	Fusion MS-SRX400 audio system, paired with Fusion Signature 7.7" waterproof speakers (2)
Clear view hatch to aft cockpit	LED deck level lighting
Access stairway to aft cockpit	USB-A charging points (2)
Stainless steel handrails	GRP radar arch
Stainless steel handrail around flybridge hatch	Twin matching whip aerials for VHF R/T and radio
Top loading cool box in navigators pedestal moulding	Covers to console and exterior furniture where appropriate

## FLYBRIDGE

U-shaped sofa (port) with storage drawers below	U-shaped sofa (port) with storage drawers below
---	---

Coffee table	Coffee table
Electric drop window (port)	Electric drop window (port)
Crockery storage drawer	Crockery storage drawer
Sideboard unit with bottle and glass storage and refrigerator	Sideboard unit with bottle and glass storage and refrigerator
50" LED TV on rise and fall	50" LED TV on rise and fall
Fusion MS-RA770 audio system, paired with Focal 100 ICW6 speakers (2)	Fusion MS-RA770 audio system, paired with Focal 100 ICW6 speakers (2)
Panoramic tinted toughened glass windows port and starboard	Panoramic tinted toughened glass windows port and starboard
Manual Venetian blinds to all windows	Manual Venetian blinds to all windows
LED overhead and concealed lighting (24v)	LED overhead and concealed lighting (24v)
Access stairway to lower accommodation	Access stairway to lower accommodation
Fitted carpet	Fitted carpet

## DECK SALOON

L-shape sofa to starboard	LED overhead and concealed (24v)
Folding dining table	Manual Venetian blinds to windows
Stainless steel framed sliding door to cockpit. Three panes with integrated hinging window aft of galley (one fixed pane, two sliding panes, one flip up window)	Manual blind to door
220/240v power outlets (1)	Fitted carpet
USB charging points (2) (USB-A and USB-C)	

## DINING AREA

Galley counter top is Solid Surface in White (satin finish)	Waste bin
4-zone ceramic hob	Drawers and storage cupboards
Hob extractor fan	Corner galley storage bin (top loading) with work top lid
Twin top lockers	220/240v power outlets (4)

Combination microwave/convection oven with grill

---

Full height fridge/freezer (270l)

---

Sink is stainless steel with mixer tap

---

## **GALLEY**

All cabins and bathrooms feature opening portholes

---

All cabins feature 220/240v power points and USB charging points

---

All bathrooms feature electric freshwater toilets and 240v shaver points OWNER'S STATEROOM

---

Large double bed with bedside tables and drawers below

---

Two-seater sofa to port, with cupboard storage

---

Walk-in wardrobe to starboard with shelves and mirror

---

Sideboard unit to starboard

---

Pull out mirror to vanity draw in sideboard unit

---

## **ACCOMODATION**

Solid Surface vanity top and thermoformed sink

---

Mirror with medicine cabinet unit

---

Storage lockers

---

Shower compartment with automatic pump out

---

Extractor fan

---

## **EN-SUITE BATHROOM**

Large double bed with drawers below

---

Half height mirror above sideliner, with storage

---

Manual Venetian blinds to windows

---

Timber-laid flooring (V-groove planked)

---

Fusion Apollo MS-RA670 audio system paired with Focal 100 ICW6 speakers (2)

---

Panoramic windows including opening portholes

---

Manual Venetian blinds to all windows

---

LED overhead and concealed lighting (24v)

---

Individual berth lights

---

220/240v outlets (2)

---

USB charging points (4) (2x USB-A and 2x USB-C)

---

Fitted carpet

---

Window with opening porthole

---

Manual Venetian blind to window

---

LED overhead and concealed lighting (24v)

---

Bathroom accessories (toilet roll holder, toilet brush and holder, soap dispenser, toothbrush tumbler and robe hooks)

---

Solid Surface flooring

---

Large double bed with drawers below

---

Half height mirror above sideliner, with storage

---

behind (port)

---

Wardrobe with shelves and mirror

---

Top lockers

---

Windows with opening portholes

---

Manual Venetian blind to all windows

---

Deck escape hatch

---

LED overhead and concealed lighting (24v)

---

Individual berth lights

---

220/240v outlets (2)

---

USB charging points (4) – two per side (2x USB-A and 2x USB-C)

---

Fitted carpet

---

behind (port)

---

Wardrobe with shelves and mirror

---

Top lockers

---

Windows with opening portholes

---

Manual Venetian blind to all windows

---

Deck escape hatch

---

LED overhead and concealed lighting (24v)

---

Individual berth lights

---

220/240v outlets (2)

---

USB charging points (4) – two per side (2x USB-A and 2x USB-C)

---

Fitted carpet

---

## **FORWARD CABIN**

Accessible from both the lobby/passage way and forward cabin

---

Solid Surface vanity top and thermoformed sink

---

Mirror with storage

---

Storage lockers

---

Shower compartment with automatic pump out

---

Extractor fan

---

Window with opening porthole

---

Manual Venetian blind to window

---

LED overhead and concealed lighting (24v)

---

Bathroom accessories (toilet roll holder, toilet brush and holder, soap dispenser, toothbrush tumbler and robe hooks)

---

Solid Surface flooring

---

## **EN-SUITE BATHROOM/DAY HEAD**

Two single beds with drawers below

---

Bedside table

---

Wardrobe with shelves and mirror

---

Top lockers

---

Window with opening portholes

---

Manual Venetian blind to window

---

LED overhead and concealed lighting (24v)

---

Individual berth lights

---

220/240v outlet (1)

---

USB charging points (2) (USB-A and USB-C)

---

Fitted carpet

---



## STARBOARD GUEST CABIN

Storage for detergent and laundry equipment

---

Under-stair storage locker

---

Double height storage locker

---

LED overhead lighting (24v)

---

## LOWER LOBBY / PASSAGEWAY AREA

Propeller shafts in Marinemet

---

5-bladed propellers in nickel aluminium bronze

---

Bow thruster 170kgF with dual-station controls

---

High speed balanced rudders

---

Power-assisted steering system

---

Trim tabs with indicators

---

Cathodic protection for sterngear

---

Sterngear, engines, fuel tank fillers, etc all electrically bonded

---

Forward and aft engine room bulkheads and engine room headlining to be integrally bonded including insulation with acoustaf foam layers

---

High volume air intakes

---

Engine room extractor fan with electronic time delay

---

Engine exhaust silencers and water-cooled exhausts

---

Engine beds integrally moulded with hull for strength and vibration absorption

---

Engines flexibly mounted

---

Automatic fire extinguisher with remote override control

---

Automatic and manual bilge pumps

---

Engine room lighting

---

Engine room access hatch and ladder

---

Electronic engine and gear shift controls

---

Engine exhaust silencers and water-cooled exhausts

---

Engine beds integrally moulded with hull for strength and vibration absorption

---

Engines flexibly mounted

---

Automatic fire extinguisher with remote override control

---

Automatic and manual bilge pumps

---

Engine room lighting

---

Engine room access hatch and ladder

---

Electronic engine and gear shift controls

---

Fresh water supply point in engine room

---

Dripless self-aligning shaft seals

---

Propeller shafts in Marinemet

---

5-bladed propellers in nickel aluminium bronze

---

Bow thruster 170kgF with dual-station controls

---

High speed balanced rudders

---

Power-assisted steering system

---

Trim tabs with indicators

---

Cathodic protection for sterngear

---

Sterngear, engines, fuel tank fillers, etc all electrically bonded

---

Forward and aft engine room bulkheads and engine room headlining to be integrally bonded including insulation with acoustaf foam layers

---

Fresh water supply point in engine room

---

Dripless self-aligning shaft seals

---

Propeller shafts in Marinemet

---

5-bladed propellers in nickel aluminium bronze

---

Bow thruster 170kgF with dual-station controls

---

High speed balanced rudders

---

Power-assisted steering system

---

Trim tabs with indicators

---

Cathodic protection for sterngear

---

Sterngear, engines, fuel tank fillers, etc all electrically bonded

---

Forward and aft engine room bulkheads and engine room headlining to be integrally bonded including insulation with acoustafoam layers

---

High volume air intakes

---

Engine room extractor fan with electronic time delay

---

High volume air intakes

---

Engine room extractor fan with electronic time delay

---

Engine exhaust silencers and water-cooled exhausts

---

Engine beds integrally moulded with hull for strength and vibration absorption

---

Engines flexibly mounted

---

Automatic fire extinguisher with remote override control

---

Automatic and manual bilge pumps

---

Engine room lighting

---

Engine room access hatch and ladder

---

Electronic engine and gear shift controls

---

Fresh water supply point in engine room

---

Dripless self-aligning shaft seals

---

## POWER AND DRIVE SYSTEMS

4 x heavy duty batteries for engine starting

---

4 x heavy duty auxiliary batteries

---

Battery link facility with remote control at helm position

---

Both battery banks are charged using a voltage sensitive relay that parallels both battery banks when a charging source is present

---

60-amp 24v float battery charger

---

Remote battery isolator control switches at main switch panel position

---

Circuit breakers on all circuits

---

12v voltage dropper/converters for certain navigation and radio circuits

---

Princess Connect telemetry and maintenance system

---

## ELECTRICAL SYSTEMS

European specification: 11kW @ 50Hz diesel generator, in own sound shields, water cooled and with specially silenced exhaust systems and with remote operation from main control

Earth leakage safety trip

---

Circuit breakers on all circuits

---

panel

---

USA specification: 11.5kW @ 60Hz diesel generator in own sound shields, water cooled and with specially silenced exhaust systems and with remote operation from main control panel

---

Automatic fire extinguisher situated in engine room

---

Shore power/generator change over control operated from main control panel

---

Polarity check system

---

### **24 Volt:**

Twin fuel tanks in NS8 marine grade alloy with interconnection system 726 gal / 872 US gal / 3300 l capacity

---

Fuel fillers to port and starboard decks

---

High capacity duplex fuel filters/water traps with integral changeover valves

---

Water warning sensors connected to warning lights at main helm position

---

Remote fuel isolation controls in cockpit locker for main engines and generator

---

Fuel gauges displayed on MFDs at both helm consoles

---

### **220/240 Volt:**

Water tanks giving a water capacity (excl. calorifier) of 139 gal / 166 US gal / 630 l capacity plus 73 litres hot water calorifier

---

Water heated by engines and 3kW immersion heater

---

Automatic water pump with filter

---

Main circuit breaker at main switch panel

---

Water level gauge

---

All cabins feature 220/240v power points and USB charging points

---

All bathrooms feature electric freshwater toilets and 240v shaver points

---

Twin fuel tanks in NS8 marine grade alloy with interconnection system 726 gal / 872 US gal / 3300 l capacity

---

Fuel fillers to port and starboard decks

---

High capacity duplex fuel filters/water traps with integral changeover valves

---

Water warning sensors connected to warning lights at main helm position

---

Remote fuel isolation controls in cockpit locker for main engines and generator

---

Fuel gauges displayed on MFDs at both helm consoles

---

Water tanks giving a water capacity (excl. calorifier) of 139 gal / 166 US gal / 630 l capacity plus 73 litres hot water calorifier

---

Water heated by engines and 3kW immersion heater

---

Automatic water pump with filter

---

Main circuit breaker at main switch panel

---

Water level gauge

---

Deck filler

---

Electric quiet flush toilet system linked to 69 gal / 83 US gal / 315 l black water tank, content gauge and manual overboard discharge, with macerator backup system as well as dockside discharge system

---

Deck filler

---

Electric quiet flush toilet system linked to 69 gal / 83 US gal / 315 l black water tank, content gauge and manual overboard discharge, with macerator backup system as well as dockside discharge system

---

## FUEL SYSTEM

Automatic/manual override electric bilge pumps in engine room (2), lazarette (2) and forward accommodation (6 in total)

---

Electric bilge pumps have controls and warning lights at main helm with audible alarm at flybridge helm

---

High capacity manual bilge system with valve system and suction points in the same areas

---

## WATER SYSTEM

Automatic engine room fire extinguisher system (with manual override) and warning system at main and flybridge helm positions providing automatic shutdown of engines, generators and ventilation fans

---

Automatic fire extinguisher system under main helm

---

Automatic fire extinguisher system under main helm

---

Hand operated fire extinguishers (5) in owner's stateroom, forward and starboard guest cabin, galley and main helm position

---

Hand operated fire extinguishers (5) in owner's stateroom, forward and starboard guest cabin, galley and main helm position Automatic engine room fire extinguisher system (with manual override) and warning system at main and flybridge helm positions providing automatic shutdown of engines, generators and ventilation fans

---

Additional extinguisher fitted when optional crew cabin is specified

---

## BILGE PUMPS

Ensign staff

---

Anchor winch back up handle

---

Fenders (6)

---

First Aid kit

---

Mooring warps (4)

---

Bed covers supplied to all cabins (except optional crew cabin)

---

Tool kit

---

Owner's manual and engine manual

---

Boat hook

---

Ship's document case

---

## EXTINGUISHERS / FIRE CONTROL SYSTEMS

Teak-laid transom platform, transom steps, cockpit deck, flybridge stairway and steps to side deck

---

Timber-laid flooring (V-groove planked) to galley

---

Furniture in Rovere oak satin finish as standard (Silver oak satin finish, Ash satin finish or Walnut in satin or gloss finish available as an option)

---

Solid Surface floors in all bathroom suites in guest accommodation

---

Solid Surface wash basin vanity tops in all bathroom suites in guest accommodation

---

Galley counter top in Solid Surface

---

Exterior upholstery in white vinyl as standard, with optional upgrade to Comfort Exterior available

---

Choice of high-quality carpets and upholstery fabrics from extensive range

---

Manual blinds to all windows and portholes (except crew porthole)

---

Optional crew cabin to have furniture in specified boat timber with fitted carpet. Crew bathrooms have Solid Surface vanity tops and GRP floors with tracking

---

Teak-laid transom platform, transom steps, cockpit deck, flybridge stairway and steps to side deck

---

Timber-laid flooring (V-groove planked) to galley

---

Furniture in Rovere oak satin finish as standard (Silver oak satin finish, Ash satin finish or Walnut in satin or gloss finish available as an option)

---

Solid Surface floors in all bathroom suites in guest accommodation

---

Solid Surface wash basin vanity tops in all bathroom suites in guest accommodation

---

Galley counter top in Solid Surface

---

Exterior upholstery in white vinyl as standard, with optional upgrade to Comfort Exterior available

---

Choice of high-quality carpets and upholstery fabrics from extensive range

---

Manual blinds to all windows and portholes (except crew porthole)

---

Optional crew cabin to have furniture in specified boat timber with fitted carpet. Crew bathrooms have Solid Surface vanity tops and GRP floors with tracking

---

## OTHER STANDARD EQUIPMENT

## FINISHES

## PRINCESS F58

+33 6 40 61 88 46 

[m.st.pierre@princessyachtsmonaco.com](mailto:m.st.pierre@princessyachtsmonaco.com)

---

Follow Princess Yachts Monaco

