

## PRINCESS S62 (2024)



**SOLD**

### HIGHLIGHTS

- / 2024 BUILT
- / 3 CABINS
- / GYROSTABILIZER INSTALLED
- / JOYSTICK CONTROL
- / THIRD CONTROL STATION
- / HYDRAULIC PASSARELLE AND AFT PLATFORM
- / ALL BIMINIS
- / UPGRADED 17.5 ONAN GENERATOR
- / AV/TV UPGRADES
- / EXTRA AFT CABIN FOR CREW/GUEST
- / AIRCONDITIONING

### SPECIFICATIONS

Localisation	Monaco, Monaco	Capacité en carburant	603 l
Année	2024	Contenance en eau douce	3250 l
Longueur	19.17 m	Moteurs	MAN V8-1200
Largeur	4.87 m	Puissance max	2 x 1200 hp
Tirant d'eau	1.46 m	Engine hours	20 m/h

Déplacement **28.87 tonnes**

The yacht is on the commission of Princess Yacht Monaco. The Company is not responsible for the accuracy of the information provided by the Yacht owner (images, specification, parameters, engine performance, legal, etc). The operating time of the engines is indicated at the time of preparation of the information and may change during further operation. The need for an inspection remains at the discretion of the Buyer. Exact parameters and characteristics can be specified in the contract of sale. Additional information is available upon request.

Prix

**2 430 000 € (ex VAT)**































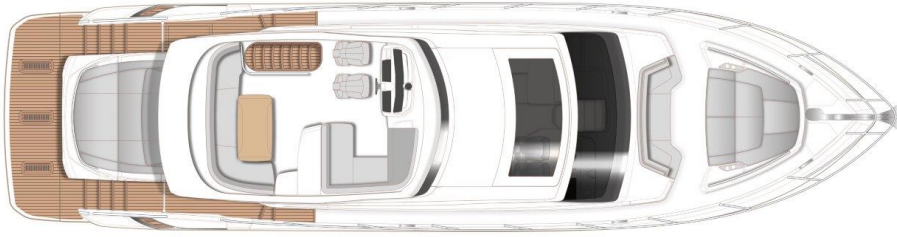






## LAYOUTS

---



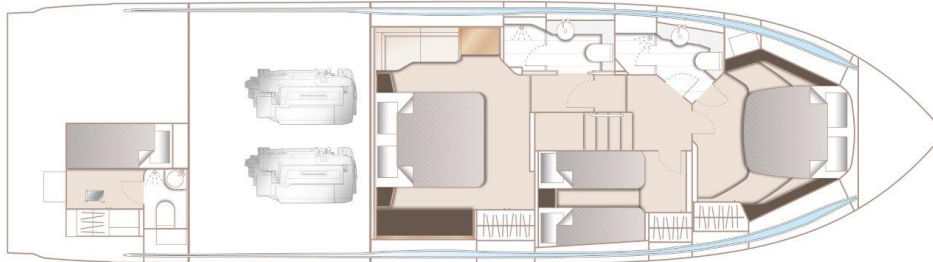
SPORTBRIDGE

---



MAIN DECK

---



LOWER DECK

---

## EQUIPMENT

---

Teak laid side decks, foredeck and coachroof walkthrough;

---

Teak laid sportbridge deck;

---

Teak coffee table (with deck mounted fixing point) for foredeck;

---

Electric stern rope handling winches (2);

---

Electro-hydraulic telescopic passerelle (3.5m) with automatic hand rails;

---

Electrically operated sun awning to aft end of cockpit (grey fabric);

---

Stainless steel anchor in place of standard

Remote control keypad (RMK-10) for multifunction display fitted at lower helm;

---

Raymarine AIS Class B transponder interfaced with chartplotters;

---

Airconditioning/heating reverse cycle (82,000 BTU) suitable for temperatures to 40°C (tropical) With controls in all cabins and outlets in all areas (including bathrooms);

---

Aft cabin air conditioning Condensing unit 6,000BTU supplying 6,000BTU unit (with SMX control) and separate outlet in toilet;;

---

Windscreen demist system using warm air heater powered from calorifier;

---



(32Kg);

---

Additional 20m of 10mm anchor chain to give a total of 60 meters;

---

ONAN 17.5 kW/50Hz generator in place of standard;

---

AGM 90Ah batteries in place of standard (for start, domestic and generator batteries);

---

Dishwasher (drawer type) fitted in galley;

---

Electric griddle/BBQ fitted to sportbridge wetbar (Kenyon);

---

Fit heated towel rail in Master cabin bathroom ;

---

Combination washer/dryer fitted in Master Stateroom lobby below companionway stairs;

---

Stern docking lights;

---

Exterior lighting upgrade package Includes : Additional deck level lights (11) to illuminate side deck and foredeck area and deck level spot lights (2) on garage door to illuminate bathing platform deck);

---

PREMIUM AUDIO SYSTEM Incorporates:

---

Raymarine Quantum Q24D Doppler 18' radar (only if chartplotter is specified);

---

Second Raymarine Axiom XL16 (15.6') colour multifunction display at lower helm;

---

Electric discharge

---

Aft cabin toilet to be connected into holding tank system;

---

Run all sink / shower outlets into standard grey water tank with discharge into holding tank;

---

Foredeck sunbeds with contrast styling to headrest and flat stitched pleat to top of base cushions in Comfort Exterior III Met with Met, Vogue or Hitch contrast;

---

Fit reticulated foam to foredeck sunbed cushions in place of standard;

---

Fit reticulated foam to all standard exterior cockpit, foredeck & sportbridge seating & aft sunpad in place of standard

---

Bimini Top - Grey canvas;

---

Additional charge for bimini to have LED overhead dimmable lighting(switched from console);

---

Foredeck sun awning with carbon fibre poles - Grey

---

Princess China (5 piece consisting of plate, side plate, bowl, cup & saucer) - 6 place settings;

---

David Mellor 'Paris' cutlery (7 pieces) - 6 place settings;

---

Princess glasses (6 wine, 6 tumbler);

---

Fender socks with Princess logo - Grey (x6);

---

Watermaker

---



---

## PRINCESS S62 (2024)



+33 6 40 61 88 46 

[m.st.pierre@princessyachtsmonaco.com](mailto:m.st.pierre@princessyachtsmonaco.com)

---

Follow Princess Yachts Monaco

