

## PRINCESS S62 (2024)



BROKERAGE

### HIGHLIGHTS

- / 2024 BUILT
- / 3 CABINS
- / GYROSTABILIZER INSTALLED
- / JOYSTICK CONTROL
- / THIRD CONTROL STATION
- / HYDRAULIC PASSARELLE AND AFT PLATFORM
- / ALL BIMINIS
- / UPGRADED 17.5 ONAN GENERATOR
- / AV/TV UPGRADES
- / EXTRA AFT CABIN FOR CREW/GUEST
- / AIRCONDITIONING

### SPECIFICATIONS

Localisation	Monaco, Monaco
Année	2024
Longueur	25 m
Capacité en carburant	603 l
Contenance en eau douce	3250 l

Moteurs	MAN V8-1200
Puissance max	2 x 1200 hp
Engine hours	20 m/h
Prix	274 000 € (ex VAT)

## EQUIPMENT

### HULL COLOUR:

- White Gel Coat Finish (with dark grey waterline & black antifouling, hull & bathing platform fendering is white with stainless steel insert);

### INTERIOR FURNITURE:

- Walnut interior wood gloss finish (galley, aft dinette and helm floor is planked walnut as standard);

Galley worktops in Grey Horizon solid surface;

Passerelle wiring - in order to be able to use the remote control when the main battery master switches are off, the passerelle is wired directly to the domestic batteries via an isolation switch on the main AC/DC panel;

Exterior Covers - Grey canvas;

Cockpit seating base cushions with no contrast and backrest with flat stitch pleat contrast. Cockpit sunbeds with flat stitched pleat contrast. Foredeck seating base cushions with no contrast and backrest with flat stitch pleat contrast. Sportsbridge seating with flat stitch pleat contrast to the U-Shape seating backrest cushions only Sportsbridge helm seat with contrast inlay and stitching in - Comfort Exterior III Met with Met, Vogue or Hitch;

Continental 220v/240v sockets;

Raymarine Ray 90 VHF/DSC (dual station) with intercom and foghorn/loudhailer ;

Joystick Aventics (dual station) (operates both engines, bowthruster and stern thruster);

Variable speed bow and stern thrusters with hold-function docking facility. (Note: Standard bowthruster is upgraded to 170kgF and a 170kgf stern thruster is fitted);

Third station controls in cockpit (engine controls and emergency stops, thruster controls);

Gyro Stabilisation (Seakeeper 9)- Includes upper helm control via the chart plotter screens;

Aft Cabin Fit out (single berth with separate WC and shower);

Starboard cabin to have double berth conversion with powered sliding mechanism on inboard berth;

### ALLURE INTERIOR STYLING UPGRADE

Teak laid side decks, foredeck and coachroof walkthrough;

Teak laid sportbridge deck;

Teak coffee table (with deck mounted fixing point) for foredeck;

Electric stern rope handling winches (2);

Electro-hydraulic telescopic passerelle (3.5m) with automatic hand rails;

Electrically operated sun awning to aft end of cockpit (grey fabric);

Stainless steel anchor in place of standard (32Kg);

Additional 20m of 10mm anchor chain to give a total of 60 meters;

ONAN 17.5 kW/50Hz generator in place of standard;

AGM 90Ah batteries in place of standard (for start, domestic and generator batteries);

Dishwasher (drawer type) fitted in galley;

Electric griddle/BBQ fitted to sportbridge wetbar (Kenyon);

Fit heated towel rail in Master cabin bathroom ;

Combination washer/dryer fitted in Master Stateroom lobby below companionway stairs;

Stern docking lights;

Exterior lighting upgrade package Includes : Additional deck level lights (11) to illuminate side deck and foredeck area and deck level spot lights (2) on garage door to illuminate bathing platform deck);

### PREMIUM AUDIO SYSTEM Incorporates:

- Deck Saloon - 50" LED TV on a powered lift with Fusion Apollo MSRA770 with AM/FM/Bluetooth/DAB/WIFI and external USB. Paired with Focal speakers (4) and subwoofer in place of standard audio system;

- Owners stateroom - 43" LED TV with Fusion Apollo MS-RA770 with AM/FM/Bluetooth/DAB/WIFI and external USB. Paired with Focal speakers (4) and subwoofer in place of standard audio system;

- Sportbridge - Fusion SRX-400 Radio/Wifi/Bluetooth with waterproof Fusion speakers (2) linked to saloon audio;

- Cockpit - Fusion SRX-400 Radio/Wifi/Bluetooth with waterproof Fusion speakers (2) with local control linked to saloon Includes 2 x Fusion ARX-70 wireless remotes in black (supplied loose for later fitting);

Raymarine Quantum Q24D Doppler 18" radar (only if chartplotter is specified);

Second Raymarine Axiom XL16 (15.6") colour multifunction display at lower helm;

Remote control keypad (RMK-10) for multifunction display fitted at lower helm;

Raymarine AIS Class B transponder interfaced with chartplotters;

Airconditioning/heating reverse cycle (82,000 BTU) suitable for temperatures to 40°C (tropical) With controls in all cabins and outlets in all areas (including bathrooms);

Aft cabin air conditioning Condensing unit 6,000BTU supplying 6,000BTU unit (with SMX control) and separate outlet in toilet;;

Windscreen demist system using warm air heater powered from calorifier;

Electric discharge

Aft cabin toilet to be connected into holding tank system;

Run all sink / shower outlets into standard grey water tank with discharge into holding tank;

Foredeck sunbeds with contrast styling to headrest and flat stitched pleat to top of base cushions in Comfort Exterior III Met with Met, Vogue or Hitch contrast;

Fit reticulated foam to foredeck sunbed cushions in place of standard;

---

Fit reticulated foam to all standard exterior cockpit, foredeck & sportbridge seating & aft sunpad in place of standard

---

Bimini Top - Grey canvas;

---

Additional charge for bimini to have LED overhead dimmable lighting(switched from console);

---

Foredeck sun awning with carbon fibre poles - Grey

---

Princess China (5 piece consisting of plate, side plate, bowl, cup & saucer) - 6 place settings;

---

David Mellor 'Paris' cutlery (7 pieces) - 6 place settings;

---

Princess glasses (6 wine, 6 tumbler);

---

Fender socks with Princess logo - Grey (x6);

---

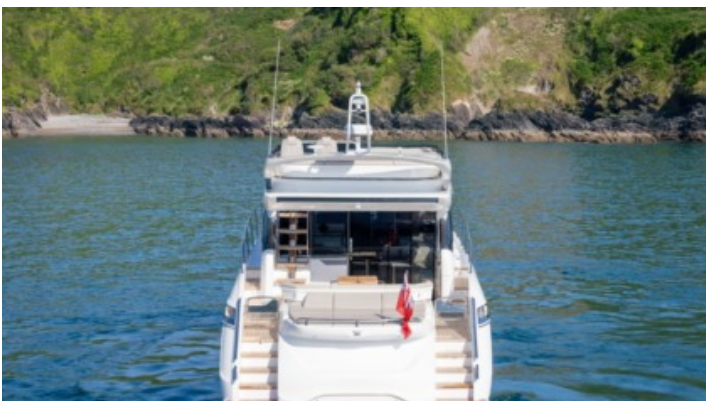
Watermaker

---



## EXTERIOR

---



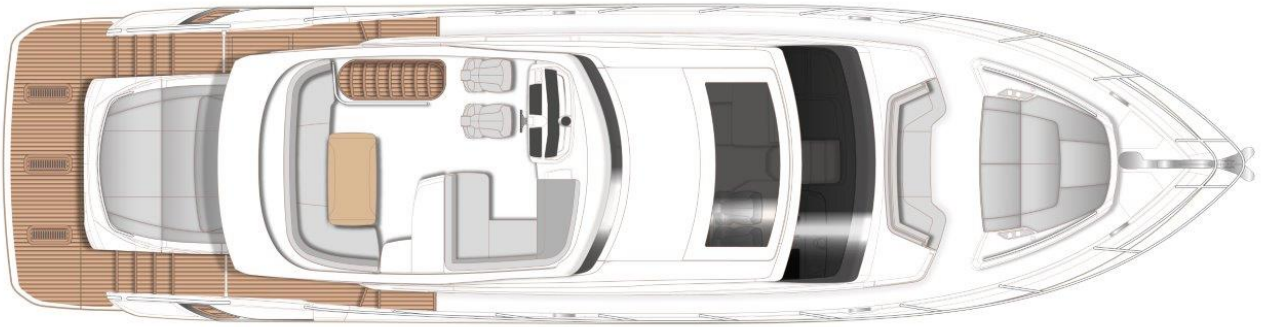




Yachts on the commission of Princess Yacht Monaco. The Company is not responsible for the accuracy of the information provided by the Shipowner (images used, yacht specifications, parameters, engine performance, legal design issues). The operating time of the engines is indicated at the time of preparation of the information and may change during further operation. The need for an inspection remains at the discretion of the Buyer. Exact parameters and characteristics can be specified in the contract of sale. Additional information is available from the manager on request.

# LAYOUTS

---



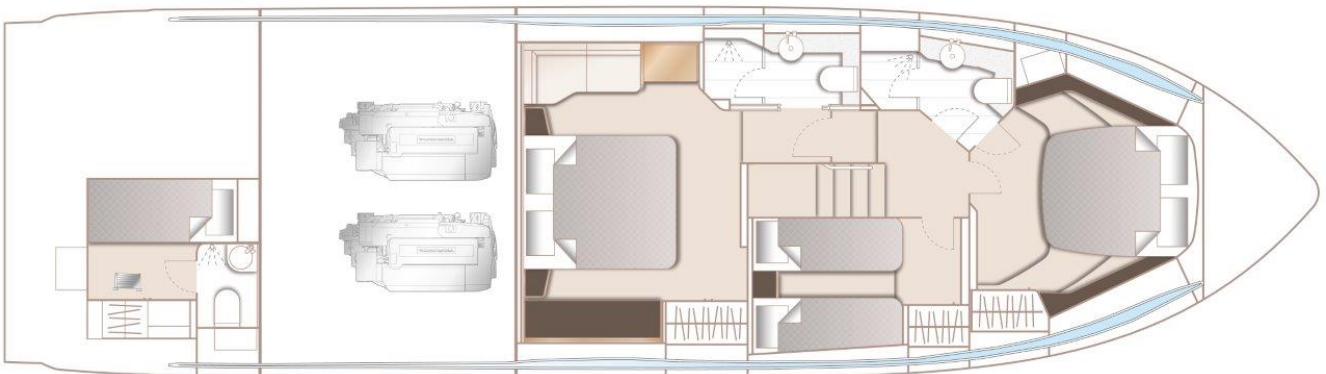
## SPORTBRIDGE

---



## MAIN DECK

---



## LOWER DECK

---