

## PRINCESS S80 (2024)



### HIGHLIGHTS

### SPECIFICATIONS

Localisation	Monaco, Monaco	Cabines	4
Année	2024	Berths	8
Longueur	25.4 m	Moteurs	2 x MAN V12
Largeur	6.07 m	Puissance max	2 x 1900 hp
Tirant d'eau	1.78 m	Vitesse max	33
Déplacement	67 tonnes	Engine hours	Contact seller
Capacité en carburant	7000 l	Prix	Prix sur demande
Contenance en eau douce	1400 l		

The yacht is on the commission of Princess Yacht Monaco. The Company is not responsible for the accuracy of the information provided by the Yacht owner (images, specification, parameters, engine performance, legal, etc). The operating time of the engines is indicated at the time of preparation of the information and may change during further operation. The need for an inspection remains at the discretion of the Buyer. Exact parameters and characteristics can be specified in the contract of sale. Additional information is available upon request.

## DESCRIPTION

---



Introducing the all-new 2024 Princess S80 – available for sale with immediate delivery!

For more details, including the full list of options and the asking price, don't hesitate to get in touch with us today!

”

















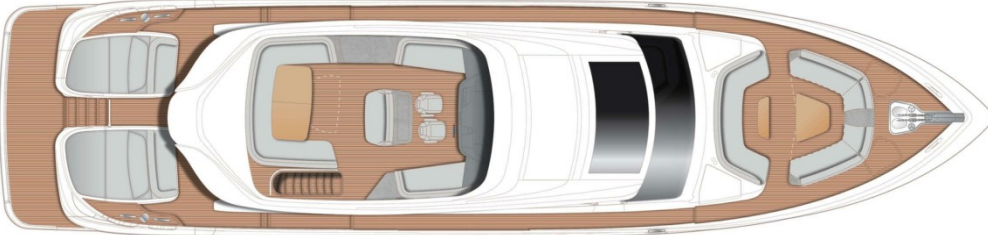






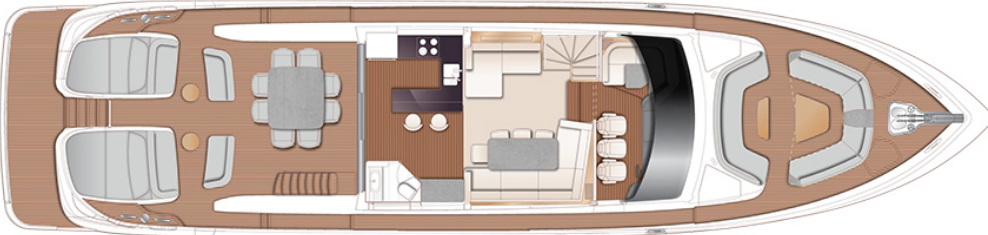
LAYOUTS

---



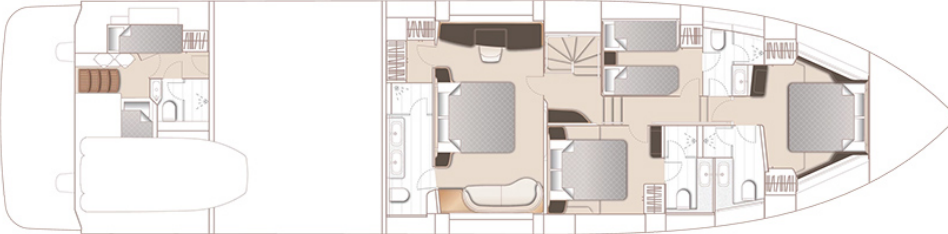
FLYBRIDGE

---



MAIN DECK

---



LOWER DECK

---

# EQUIPMENT

---

## Equipment

### ENGINES & DRIVE

Extended range fuel tank (includes automatic fuel transfer) (additional 1,800 litres to give 8,800 litres total)

---

Wing station (third) controls in port side cockpit buttress (engine controls, emergency engine stops, and thruster controls)

---

Low speed trolling system

*This system allows controlled limited clutch slippage so the yacht can operate at speeds slower than would be possible with the clutch engaged and the engines on minimum rpm for forward movement.*

---

### HYDRAULICS

Hydraulic stern thruster (320kgF)

---

### STABILISATION

Gyro stabilisation (1x Seakeeper 26)

*Seakeeper display/control is via any of the fitted MFD screens*

---

### HULL COLOUR

White gelcoat finish (with dark grey waterline, black antifouling. Hull & bathing platform fendering is white with stainless steel insert)

---

Canopy styling blade

Electric blue

---

### INTERIOR FURNITURE

Silver Oak wood satin finish

---

Retrofit – Aft galley & helm floor to be Silvan Truffle

---

### LAYOUT

Flip-up arm rests to upper helm & navigator seating (2 per seat, to make 4 in total)

---

Flip-up arm rests to lower helm & navigator seating (2 per seat, to make 4 in total)

*When the optional navigator seat is selected, the arm rests will be supplied to the captain's helm seat and optional navigator's seat. The standard navigator seat will have no arm rests*

---

Additional navigator seat to lower helm (to make 3 lower helm seats total)

*Leather upholstered with electric height and electric fore and aft adjustment*

---

Forward cabin to have bilge level dry storage space, accessed through a hatch in forward cabin floor, including access ladder. Interior finish is white gel with white laminate shelving

---

Port cabin to have double berth conversion with powered sliding mechanism on inboard berth

---

2 x Cockpit standard option Mesh Side table D48 with upgraded top

*Top: Marble, Base: Aluminium 10C African Savannah*

---

Saloon Cleo CTV3 coffee table in place of standard

*Top: Galaxy, Structure: Black Oak Dia.*

---

### GALLEY

Fit Statuario Maximus (honed) to galley and cockpit worktop

---

### BATHROOMS

Shadow Pack - Elevate the styling of all bathrooms on board (excluding crew) with the signature S & V Class Shadow Pack, a collection that adds modern black brightware and slate grey furniture units to all bathrooms

---

### CARPET

Saloon and lower accommodation carpet: Maldive Ecu

---

### DECK HARDWARE

Electrically operated sliding roof over forward saloon area (incorporating skylights with electric blinds)

---

Electrically operated sun awning to aft end of cockpit in anthracite grey mesh

---

Teak (8mm) decking upgrade throughout, in place of standard 6mm teak

---

Sportbridge dining table with electric up/down mechanism (converts to coffee table, in place of standard fixed coffee table)

---

Teak Coffee table to foredeck forward-facing U-shaped seating

---

Sunbed conversion with infill/cushions for foredeck aft facing seating area (stows in foredeck seating outboard wings)

---

Side boarding gates to aft port & starboard side decks in addition to standard passerelle

---

Primary anchor 80kg stainless steel Lewmar Claw anchor, with stainless steel Lewmar swivel. Secondary anchor 50kg stainless steel Lewmar Claw anchor, with stainless steel Lewmar swivel, in place of standard

---

Additional 50m, per side, of 14mm galvanised anchor chain (standard is 100m attached to 80kg anchor & 70m attached to 50kg anchor)

---

Plug in carbon pole transom shower and deck socket to transom

---

---

## GENERATOR

Upgrade to two Kohler 28kW/50Hz generators, to be fitted in place of standard

*Note: Recommended with stabilisation and/or Gulf spec. aircon*

*Note: Incorporates the Kohler PGEN paralleling system providing automatic Start/Stop control of the second generator as required to meet the boat loading conditions*

---

## ELECTRICAL

Multi sockets, in place of standard sockets (throughout craft)

---

Power Socket upgrade

*Additional Power sockets (deck saloon, galley & all cabins, including crew quarters).*

---

CCTV Option 1

*CCTV system with pan/tilt/zoom camera in cockpit and two fixed cameras in engine room, displayed on Sportsbridge and lower helm displays (total of 3 cameras)*

---

Underwater transom lights (4x Lumishore THX 804 full colour interfaced with Radar/Chartplotter MFDs)

---

Underwater lighting to aft hull sides (4x Lumishore THX 804 full colour interfaced with Radar/Chartplotter MFDs - 2 per side)

---

Fresh water maker (189l/h) complete with remote display in galley and service/spares kit

---

Underfloor heating in bathrooms (price per bathroom, does not include shower area)

---

Heated towel rail to bathroom

---

Combination washer/dryer machine located in guest lobby area under stairs

---

Concealed corner galley storage unit with electric lift mechanism

---

Wine cooler (18 bottle) in starboard side sideboard opposite galley

---

## AUDIO VISUAL & COMMUNICATIONS

Cockpit seating area exterior TV Package

*Exterior 43" TV in unit below window (flip up) with dedicated satellite decoder when specified, linked to cockpit speakers (via Naim unit) when fitted*

---

Premium Audio/Video Upgrade

---

Dummy KVH (TV6) dome 67cm x 2

---

Run copex with mouse from radar arch to main electrical space for later fitting of phone antenna

---

---

## NAVIGATION

Raymarine Axiom 2 XL 19 brilliant colour multifunction displays (3)

*Two at lower helm and one at sportbridge helm in place of 16" multifunction displays*

---

Additional Raymarine Axiom 2 XL 19 multifunction brilliant colour multifunction display at sportbridge helm

---

Additional Böning screen to lower helm

---

Raymarine Cyclone Pro Radar 110W pedestal, with 4' open array

---

Raymarine AIS Class B transponder interfaced with chart plotter

---

## AIR CONDITIONING

Gulf spec. - Reverse Cycle Air Conditioning/heating (207,000 BTU fan capacity with 144,000 BTU chiller capacity)  
*Suitable for temperatures to 50°C (Gulf) incorporating a windscreen demist facility*

---

Additional reverse cycle split gas air conditioning/heating system in cockpit dining area  
*2 x 12,000 BTU outlets are located to the aft end of the cockpit headlining. To include cockpit screen and side infill panels*

---

Electrosea Electrostrainer fitted on air conditioning sea water inlet

---

## MOSQUITO SCREENS

Mosquito screens for portlights

---

## EXTERIOR UPHOLSTERY / CANVAS / COVERS

Fit reticulated foam to all fixed exterior sportbridge, foredeck and cockpit seating in place of standard (to improve drainage)

---

Fit reticulated foam to optional foredeck converting sunpad (when selected)

---

Exterior covers - Grey Canvas

---

Foredeck sun awning (forward) with carbon fibre poles (grey mesh) and deck mounting sockets

---

Bimini top - Grey

---

Additional charge for Bimini top to have LED overhead lighting (switched from console)

---

Additional charge for Bimini top to be electro-hydraulically powered

---

## PRINCESS S80 (2024)

+33 6 40 61 88 46   
m.st.pierre@princessyachtsmonaco.com

---

Follow Princess Yachts Monaco



---

The yacht is on the commission of Princess Yacht Monaco. The Company is not responsible for the accuracy of the information provided by the Yacht owner (images, specification, parameters, engine performance, legal, etc). The operating time of the engines is indicated at the time of preparation of the information and may change during further operation. The need for an inspection remains at the discretion of the Buyer. Exact parameters and characteristics can be specified in the contract of sale. Additional information is available upon request.