

PRINCESS V60 (023)



HIGHLIGHTS

/ ALL-NEW MODEL

/ SPACIOUS COCKPIT

/ INCREDIBLY ELEGANT
LINES

/ STRONG SPECIFICATION

SPECIFICATIONS

Localisation	Monaco	Contenance en eau douce	603 l
Année	2019	Cabines	3+1
Longueur	19.17 m	Berths	6+2
Largeur	4.87 m	Moteurs	2 x VOLVO D13-900
Tirant d'eau	1.5 m	Puissance max	900 hp
Déplacement	27.2 tonnes	Prix	Prix sur demande
Capacité en carburant	3250 l		

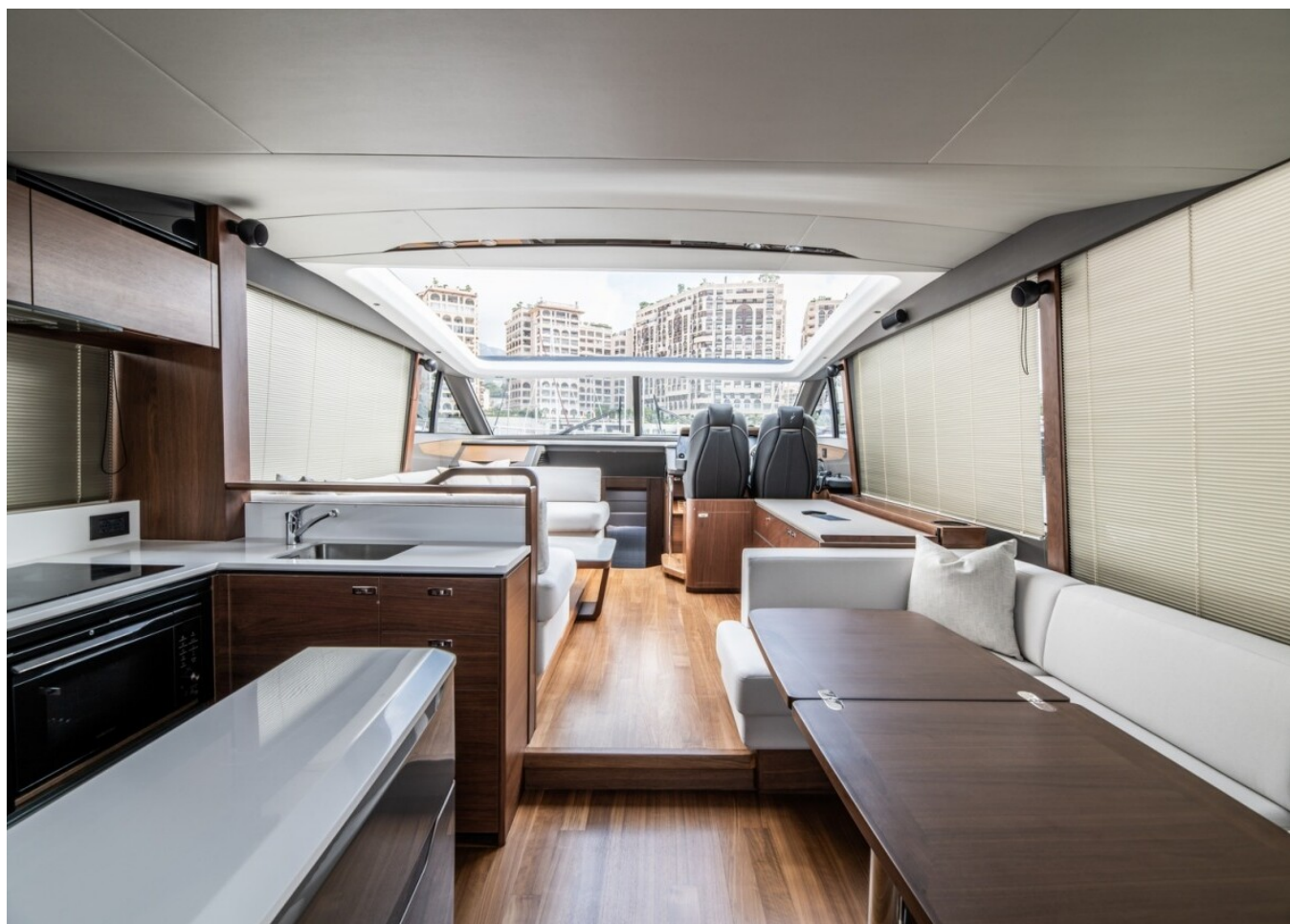
















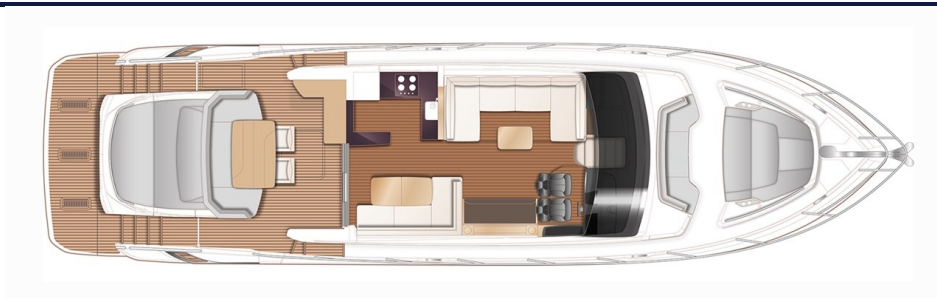




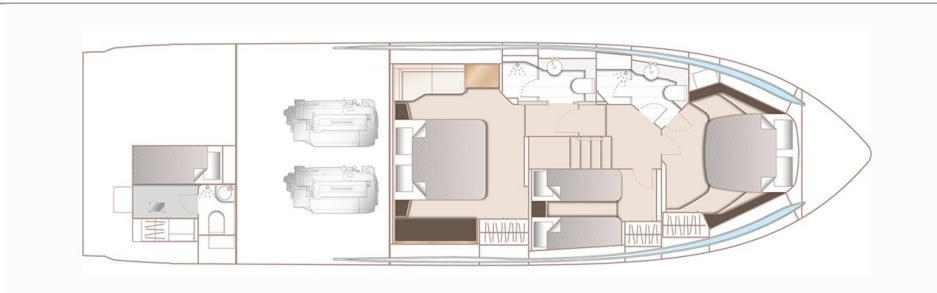




LAYOUTS



MAIN DECK



LOWER DECK

EQUIPMENT

Exterior Styling Include:

Hull White with dark grey waterline & black antifouling

Generator

Walnut interior wood satin finish (galley, dinette, saloon and helm floor is walnut as standard)

Audio Visual & Communications

Crew Cabin fit out (single berth with separate WC and shower)

Starboard cabin to have double berth conversion with powered sliding mechanism on inboard berth

MOTEURS

2 x VOLVO D13-900 (2 x 900 hp)

PRINCESS V60 (023)



+377 6 40 62 55 44 

c.oddone@princessyachtsmonaco.com

Follow Princess Yachts Monaco

