

PRINCESS V62 (052)



SOLD

HIGHLIGHTS

/ WATERMAKER

/ TENDER WILLIAMS 325
TURBO JET

/ ADVANCED BOW & STERN
THRUSTER

/ ONAN 13.5 KW/50HZ

/ VIDEO MONITORING
SYSTEMS

SPECIFICATIONS

Localisation	Calpe, Spain	Cabines	3+1
Année	2010	Berths	6+2
Longueur	19.39 m	Moteurs	2 x Caterpillar C18
Largeur	4.99 m	Puissance max	2 x 1050 hp
Tirant d'eau	1.13 m	Vitesse max	33
Déplacement	23.5 tonnes	Engine hours	560 m/h
Capacité en carburant	3409 l	Prix	725 000 € (ex VAT)
Contenance en eau douce	500 l	Flag	Jersey





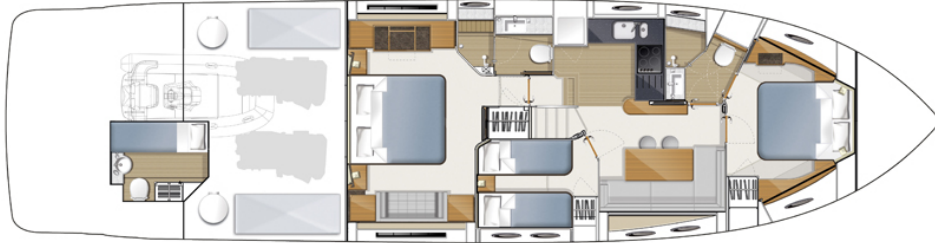




LAYOUTS



MAIN DECK



LOWER DECK

EQUIPMENT

HULL COLOUR / INTERIOR FURNITURE

Hull color: white

Interior wood: Serotina cherry gloss finish
(galley and saloon floors are ash)

Galley worktops are Aztec Brown

Bathroom countertops are Kokoura

Continental 220v/240v sockets

LAYOUT

Standard three cabin layout

Crew cabin fit out

INTERIOR/EXTERIOR STYLING

Teak laid side deck

Additional lights on side deck and cockpit

Underwater lighting to transom (4 spots)

Sunlounge mattresses in bow area in Movida
Metallic with Mocca accents

Stingray leather door handles

The drawer for cutlery storing Finishing is in beige Alcantara Champagne. Headboards in all cabins are from Stingray Edelman Smokey shagreen leather

Sofa in the master cabin is stingray Edelman Smokey shagreen leather

The master cabin table, coffee table and bar surface decoration are stingray leather

DECK HARDWARE

Tender Williams 325 Turbo Jet

Watermaker

Washing / dryer machine in galley

Dishwasher on lower deck

Microwave

Dual-zone MIELE wine cooler in the galley

Electro-hydraulic telescopic passerelle (3.5m)
with automatic hand rails

Sainless steal anchor

Additional 20m of anchor chain to give a total
of 60 metres

Additional insulation of the engine
compartment

Electric stern rope handling winches (2)

Advanced bow-thruster

Stern-thruster

Set of safety equipment

AUDIO VISUAL & COMMUNICATIONS

Main saloon - 32" lifting LCD TV connected to
BOSE 18 stereo system

Master cabin - 22" LCD TV and DVD

Guest cabin - 19" LCD TV and DVD

iPod dock station in saloon

ONAN 13.5 kW/50Hz generator in place of
standard 7 kW

Bose Lifestyle 48 cinema system in saloon

Bose Lifestyle 18 cinema system in master cabin

iPod dock station in master cabin

Bose 3.2.1 stereo system in lower saloon

iPod dock station in lower saloon

19" TV in stbd cabin + Bose 3.2.1 connected to
TV

iPod dock station in stbd cabin

26" TV in VIP cabin

Bose 3.2.1 stereo system in VIP cabin

iPod dock station in VIP cabin

Two video cameras in engine room, one per
each engine + one for garage door

PRINCESS V62 (052)

+33 6 40 61 88 46 

m.st.pierre@princessyachtsmonaco.com

Follow Princess Yachts Monaco

