

PRINCESS X80



SPECIFICATIONS

Localisation	United Kingdom, Shipyard
Longueur	25.18 m
Largeur	6.06 m
Tirant d'eau	1.78 m
Déplacement	61.6 tonnes
Capacité en carburant	7.000 l

Contenance en eau douce	1.400 l
Cabines	4+2
Moteurs	MAN V12-1900
Puissance max	2 x 1900 hp
Vitesse max	31 +
Prix	Prix sur demande

EQUIPMENT

DECK FITTINGS

Teak-laid transom platform, transom steps, cockpit deck, stairway to flybridge, side decks, steps to foredeck, flybridge aft sun deck and foredeckseating walkthrough areas

Reversible electric anchor winch with foredeck, main helm and flybridge controls

Stemhead roller with automatic anchor launch and retrieve

Twin anchor system incorporating a Primary anchor – 80kg Galvanised Claw anchor with 100m of 14mm galvanised chain and a Secondary anchor – 50kg Galvanised Claw anchor with 70m of 14mm galvanised chain

Twin electric sternline mooring winches

Deck hatch access to chain locker, rope locker and engine room

Freshwater deck/anchor wash (with both fore and aft deck outlets)

Stainless steel bow, nose and stern fairleads

Stainless-steel bow spring cleats (1 pair, port & starboard)

Stainless-steel stern spring cleats (1 pair, port & starboard)

Stainless-steel guard rails to foredecks

Stainless steel flybridge handrails with glazed panel

Stainless steel handrails to main deck side decks

Foredeck escape hatch

Foredeck U-shaped seating area with removable coffee table

Twin coach roof lockers for storage of fenders, ropes and cushions

PVC rubbing band with stainless-steel insert

LED deck level lighting

Full set of IMCO navigation lights

Riding light

Twin beam searchlight with remote controls

Stern docking lights

Twin electric horns

Fuel and water fillers

AFT COCKPIT AND BATHING PLATFORM

Self-draining

Upholstered U-shaped seating with storage below (for life-rafts)

Teak folding dining table paired with 3 dining chairs

LED overhead and deck level lighting

Stainless-steel handrails

Second station controls portside including thruster controls and emergency engine stop

Remote control 4.5m telescopic passerelle with automatic folding handrails (1.2m overhang)

Watertight pantograph door giving access from bathing platform into crew area/engine room

Engine room to cockpit escape hatch

Stern lazarette and locker with provision for 2x Seabob F5/F5 S/F5 SR storage & charging

Wash hand basin with mixer tap to portside

Starboard locker containing remote fuel cocks, manual bilge pump with valve chest and manual controls for automatic fire extinguishers

Integral stairway to flybridge with teak step treads

Twin transom gates leading to bathing platform

Electro-hydraulic teak laid raise/lower bathing platform (550kg SWL)

Retractable bathing ladder (manual) in side of bathing platform

Hot and cold transom shower

220/240v shore support inlet

Canvas cockpit cover

HELM

Enclosed pilot house with central leather upholstered electric seat with fore, aft and height adjustment

L-shaped companion seating to port (with deployable side table) and optional navigator seat to starboard

2-stage Sliding doors to fully enclose or open helm to skylounge area

Instrument console with display incorporating engine instruments, CCTV, fuel gauges, alarms and rudder position indicator

Helm position instrument and controls console

Intercom to galley and crew area

Automatic fog horn with loudhailer

Chart storage

Drink holders

Toughened glass screen (clear for night vision) with windscreen de-mist system

Windscreen wipers with freshwater windscreen wash

Black mesh sunscreens

Bilge pump controls with visual pump running warnings

24v and 240v electrical control panel

Riding light, helm and navigation light control switches

On/Off & dimmable LED overhead/concealed lighting (24V) with night lighting & scene selection

Watertight pantograph door giving direct access to starboard side foredeck walkthrough area

‘V’ groove planked timber flooring

220/240v outlets (1)

USB connection points (2)

SKYLOUNGE

Sofa & coffee table

55” 4K UHD LED TV on rise and fall

DVD Blu-ray system with Naim Uniti Atom audio system with speakers (2)

Sideboard with fridge and storage

Access stairway to main deck

Stainless steel opening glass patio doors to aft deck area

USB connection points (2)

On/Off & dimmable LED overhead/concealed lighting (24V) with scene selection

Tinted panoramic toughened side windows

Glazed roof panels with powered blinds and slat feature

Manual roller blinds to all side windows

Manual curtains to aft door, stowed to port

‘V’ groove planked timber flooring with rug inlay

220/240v outlets (1)

USB connection points (2)

FLYBRIDGE AND FLYBRIDGE FOREDECK

Flybridge foredeck with twin sunbeds

Standard layout is Flybridge aft deck area with 2x L-shaped sofas & 2x side tables. Port side L-shaped sofa can be adjusted to face forward or aft.

Dining table with chairs to accommodate 8 persons (10 for 5 cabin layout)

Naim Uniti Atom audio system with waterproof ΔJL Audio M6-650X-L speakers (2) to aft end of flybridge

Clear view hatch to aft cockpit

Access stairway to aft cockpit

Stainless-steel handrails

Storage lockers port/starboard

Aft servery unit with sink and tap

LED overhead and deck level lighting

Radar mast

Twin matching whip aerials for VHF R/T and radio

Covers to exterior furniture where appropriate

USB connection points (2)

DECK SALOON

Large L-shaped sofa to port with storage below

Sofa to starboard with storage below

Coffee table

55” 4K UHD LED TV on rise and fall.

DVD Blu-ray system and Naim Uniti Atom audio system with speakers (4)

Servery unit with integrated drinks refrigerator and icemaker

Glasses storage sideboard

Panoramic tinted toughened glass windows port and starboard

Triple stainless-steel framed cockpit doors

Access stairway to lower accommodation

Access stairway to skylounge

On/Off & dimmable LED overhead/concealed lighting (24V) with scene selection

220/240v outlets (2)

USB connection points (4)

Manual roller blinds to all outboard windows

Manual curtains on wave track to aft patio doors, stowed to port

Fitted carpet

Onboard ethernet router & 4G/5G internet modem

GALLEY

Granite/quartz worktop

Open bar/servery layout with powered electric screen to fully enclose galley and sliding door

Miele 4-zone Induction hob

Hob extractor

Miele combination microwave/ convection oven with grill

1.5-bowl stainless-steel sink with mixer tap

Chopping board & storage

Full height refrigerator/deep freezer

Dishwasher

Icemaker

Waste bin

Drawers and storage cupboards

Manual roller blinds to window

Pantograph door to starboard side deck

LED overhead and task lighting (24V)

220/240v outlets (4)

‘V’ groove planked timber flooring

Access to deck saloon via sliding door

Access to dinette via sliding door
FORWARD DINING AREA
Dining table with aft facing dinette seating and dining chairs (4)
Stone topped Sideboard unit with crockery, glassware and general storage
Entertainment unit with Naim Uniti Atom audio system and speakers (2)
220/240v power outlets (2)
USB connection points (2)
On/Off & dimmable LED overhead/concealed lighting (24V) with scene selection
Full-height panoramic tinted toughened glass port window, with manual recessed roller blinds
Powered SHY roller blinds to forward glazing
Manual roller blinds to outboard windows

ACCOMMODATION

All cabins and bathrooms feature opening portholes and air conditioning
All cabins feature 220/240v powerpoints
All en-suites feature 240v shaver points

MASTER STATEROOM

Large double bed with bedside tables and drawers below
Dressing area with full length mirror, hanging, shelf and drawer storage
Built-in safe
Port side dressing table with integrated mirror, chair, storage drawers and cupboards
Starboard side sofa with storage units
55" 4K UHD LED TV
DVD Bluray system connected to Naim Uniti Atom audio system with speakers (2) and subwoofer
Panoramic windows including opening portholes
Roman blinds and manual sheer roller blinds to hull windows
On/Off & dimmable LED overhead/concealed lighting (24V) with scene selection
220/240v outlets (2)
USB connection points (4)
En-suite bathroom with towel rail

FORWARD STATEROOM

Large double bed with bedside tables and drawers below
Built-in safe

Twin double wardrobes
Port side dressing table with integrated mirror, stool & storage drawers
43" 4K UHD LED TV
DVD Blu-ray system connected to Naim Uniti Atom audio system with speakers (2) and subwoofer
Panoramic windows including opening portholes
Roman blinds and manual sheer roller blinds to hull windows
On/Off & dimmable LED overhead/concealed lighting (24V) with scene selection
220/240v outlets (2)
USB connection points (4)
En-suite bathroom

STARBOARD GUEST CABIN

Double bed with drawers below
Bedside table
Dressing table with stool
Wardrobe with shelves
Mirror
Storage lockers
Window with opening portholes
Roman blinds
On/Off & dimmable LED overhead/concealed lighting (24V) with scene selection
Individual berth lights
220/240v outlets (1)
USB connection point (2)
En-suite bathroom

PORT GUEST CABIN

Two single beds with drawers below
Bedside table
Wardrobe with shelves
Mirror
Storage lockers
Window with opening portholes
Roman blinds
On/Off & dimmable LED overhead/concealed lighting (24V) with scene selection
Individual berth lights
220/240v outlets (1)
USB connection point (2)

High speed balanced rudders
Cathodic protection for sterngear
Sterngear, engines, fuel tank fillers, etc all electrically bonded
LED Engine room lighting
Engine room access from transom and port side deck via crew area and from cockpit deck
Power-assisted electro-hydraulic steering system
Electronic engine and gear shift controls
Bow thruster with dual-station controls
Fresh water supply point in engine room
Dripless self-aligning shaft seals
ELECTRICAL SYSTEMS
24 Volt:
4 x heavy duty batteries for engine starting
6 x heavy duty auxiliary batteries
Battery link facility with remote control at helm position
Both battery banks are charged using a voltage sensitive relay that parallels both battery banks when a charging source is present
2 x 100-amp 24v float battery chargers
Remote battery isolator control switches at main switch panel position
Circuit breakers on all circuits
24v to 12v converters for certain navigation and radio circuits
24v to 240v/50Hz inverter for saloon a/v, galley fridge and optional telephone system
Galvanic isolation system
220/240 Volt:
European specification: Up to 2 x 27.5kW @ 50Hz diesel generators in own sound shields, water cooled and with specially silenced exhaust systems and with remote operation from main control panel (single generator as standard)
USA specification: Up to 2 x 29kW @ 60Hz diesel generators in own sound shields, water cooled and with specially silenced exhaust systems and with remote operation from main control panel (single generator as standard)
220/240v shore power inlet
Shore power/generator change over control operated from main control panel
Polarity check system
Earth leakage safety trip, circuit breakers on all circuits
Power points (240v) in all cabins and living areas, helm position and galley
240v shaver points in washrooms
3kW immersion heater for fresh water

CCTV system with camera in aft cockpit and two fixed cameras in engine room, displayed on helm MFDs

FUEL SYSTEM

Main fuel tank with fuel polishing transfer system to day tank giving a total 7000 litres of fuel capacity (8500 litres if long range fuel tank is specified).

Fuel fillers to port and starboard

High capacity duplex fuel filters/water traps with integral changeover valves and water sensors connected to alarms at helm position

Remote fuel isolation controls in cockpit locker for main engines and generators

Fuel gauges at helm position

AIR CONDITIONING SYSTEM

Air Conditioning/heating reverse cycle

204,000 BTU fan capacity with 144,000 BTU chiller capacity

suitable for temperatures to 40°C (tropical)

incorporating a windscreen demist facility.

The standard generator is suitable.

Outlets in all areas and any concentrations of AV equipment (if required)

WATER SYSTEM

Fresh water tanks giving 1500 litres capacity plus 200 litres hot water calorifier

Automatic water pump with filter

Water level gauge

Deck filler

Pump circuit breaker at main switch panel

Electric freshwater toilet system linked to 500 litres holding tank, content gauge and low noise electric overboard discharge, with macerator backup system as well as dockside discharge system

Grey water tank to take waste water from sinks/showers, washing machine(s) and dishwasher

BILGE PUMPS

Automatic/manual override electric bilge pumps in engine room, rudder area and forward accommodation

High capacity manual bilge system with suction points in the same areas

Electric bilge pumps have controls and warning lights with audible alarm at helm position

FIRE EXTINGUISHERS

Automatic engine room fire extinguisher system (with manual override) and warning system at helm position providing automatic shutdown of engines, generators and ventilation fans

Automatically operated engine room air shutoff system

Hand operated fire extinguishers in all guest cabins, galley, crew quarters and flybridge

OTHER ITEMS SUPPLIED AS STANDARD

Ensign staff

Fenders (8)

Mooring warps (4)

First Aid kit

Set of towels (8 large, 8 hand), NB : 10 sets with 5 cabin layout

Bed cover supplied to all cabins (except crew cabin)

Complete set of Lucrezia crystal glassware (8 settings consisting of tumbler, highball and wine glasses) NB : 10 settings with 5 cabin layout

Set of Sous Le Soleil crockery (8 settings consisting of plate, cake plate, dessert plate, bowl, cup & saucer) NB : 10 settings with 5 cabin layout

Set of stainless steel cutlery (8 settings of David Mellor “Paris” cutlery 7 pieces) NB : 10 settings with 5 cabin layout

Tool kit

Boat hook

Owner’s manual and engine manual

Ship’s document case

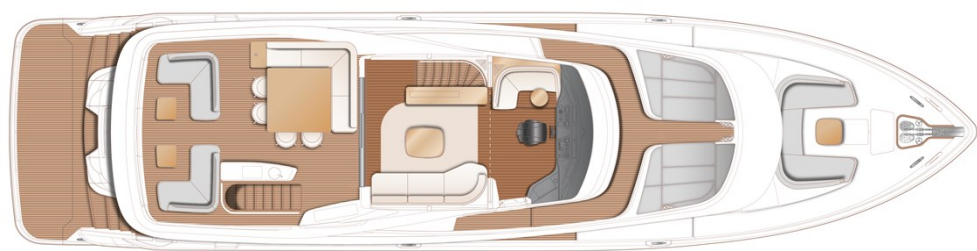
EXTERIOR



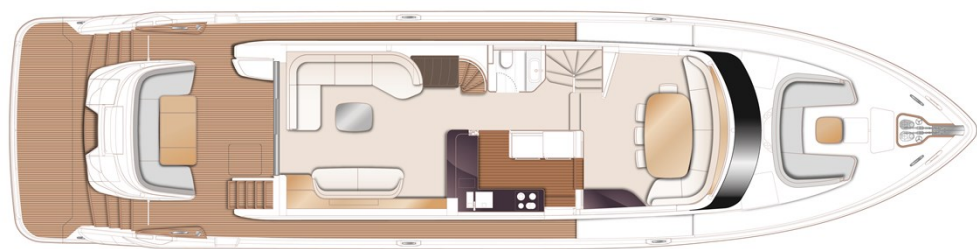
INTERIOR



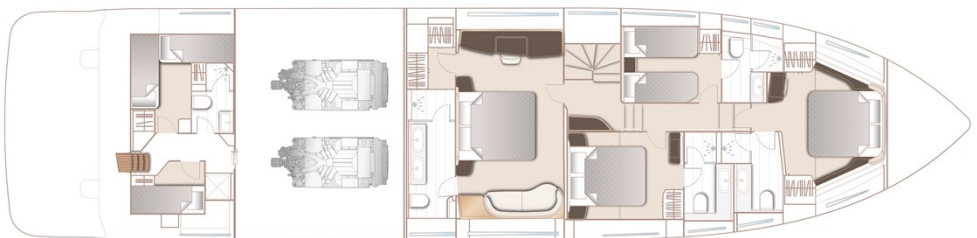
LAYOUTS



FLYBRIDGE



MAIN DECK



LOWER DECK

Yachts on the commission of Princess Yacht Monaco. The Company is not responsible for the accuracy of the information provided by the Shipowner (images used, yacht specifications, parameters, engine performance, legal design issues). The operating time of the engines is indicated at the time of preparation of the information and may change during further operation. The need for an inspection remains at the discretion of the Buyer. Exact parameters and characteristics can be specified in the contract of sale. Additional information is available from the manager on request.