

PRINCESS Y85



STOCK

HIGHLIGHTS

/ AVAILABLE IN STOCK

SPECIFICATIONS

Localisation	After request	Contenance en eau douce	1500 l
Année	2025	Cabines	4
Longueur	26.2 m	Moteurs	MAN V12
Largeur	6.3 m	Puissance max	2 x 1900 hp hp
Tirant d'eau	1.77 m	Vitesse max	33 knots
Déplacement	66 tonnes	Engine hours	Contact seller
Capacité en carburant	11000 l	Prix	6 702 400 £ (ex VAT)





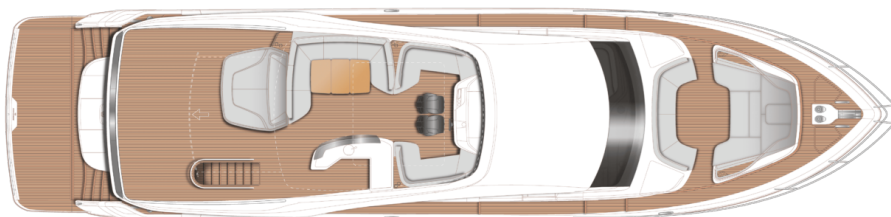




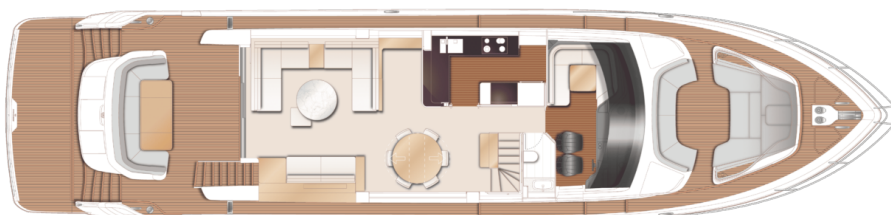




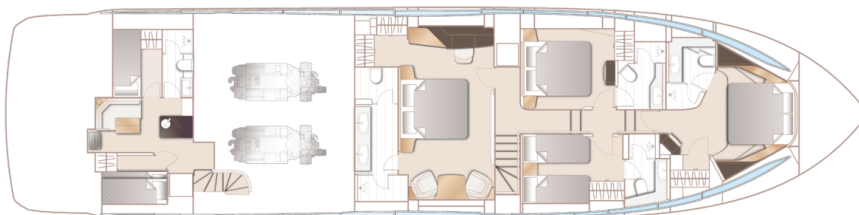
LAYOUTS



FLYBRIDGE



MAIN DECK



LOWER DECK

EQUIPMENT

ENGINES & DRIVE

Third station controls in cockpit (engine controls, thruster controls and engine emergency stops)

Low speed trolling system. This system allows controlled limited clutch slippage so the yacht can operate at speeds slower than would be possible with the clutch engaged and the engines on minimum rpm for forward movement

HYDRAULICS

Hydraulic Sternthruster (variable speed 340 KgF)

STABILISATION

Sleipner Hydraulic system (consisting of separate engine driven hydraulic pumps on each engine with cross connections allowing any system to be supplied with hydraulic power from either engine) and incorporating SPS92/VF1350 vector fin stabilizer system. When underway fins are driven by engine powered hydraulic motors or by a generator powered electric motor when the main engines are turned off

INTERIOR FURNITURE

Walnut interior wood Satin finish (galley and wheelhouse floors are V groove planked Walnut as standard)

Saloon & Dining area floors to be in V groove planked wood with inlaid rug* in aft saloon area (wood type same as galley & wheelhouse)

DECK HARDWARE

GRP Flybridge hardtop featuring electric opening louvre section (including lighting with scene selection) is finished in White gelcoat with Oyster grey legs

Electrically operated sun awning to aft end of hardtop in Anthracite Grey mesh

Hardtop surround finished in Graphite Grey (with white gel finish to horizontal face) with Oyster Grey legs

Kettal Zigzag coffee table (with tray and deck mounted fixing point) for foredeck

Cockpit servery unit (includes top loading coolbox (100ltrs) and storage cupboard

Plug in carbon pole transom shower and deck socket to bathing platform

Side boarding gates to aft port & starboard side decks in addition to standard passerelle

ELECTRICAL

Multi sockets, in place of standard sockets (throughout craft)

Underfloor heating in Master & Forward bathrooms

AGM 90Ah batteries in place of standard (for start, domestic & generator batteries)

Exterior lighting upgrade package Included linear LED (x1) and fibre optic (x14) lighting to the cockpit pelmet and headlining and low level LED deck lighting (x28)

Fresh Water Maker (189 l/h) (maker fresh water from sea water) complete with remote display in galley and service/spares kit

Wine cooler (34 bottle) fitted in galley (replaces inboard drawer unit)

Underwater transom lights (4 LUMISHORE

Electric sheer roller blinds fitted outboard of

SMX54 Blue/White)

Underwater lighting to aft hull sides (8 LUMISHORE SMX54 Blue/White)(4 per side)

Heated towel rail in Forward, Port & Starboard bathrooms (fitted as standard in Master Stateroom)

roman blinds in all guest cabins

Main Deck saloon – electrically operated Roman Blinds in place of standard electrically operated roller blinds

AUDIO VISUAL & COMMUNICATIONS

PREMIUM AUDIO/VIDEO UPGRADE

Incorporates : Deck Saloon – 55' LED TV on a power lift. Naim Uniti Star audio system – Stream your music in high-resolution, play, backup your CDs, store and access your music library or tune in to your favourite radio stations via DAB & FM radio. Access a world of music with a host of streaming and media sources with intuitive app enabled features. Paired with upgraded Focal speakers and a subwoofer.

Master Stateroom – 55' LED TV, Naim Uniti Atom audio system with Bluetooth, multi-zone streaming capability and dedicated app. Paired with upgraded Focal speakers and a subwoofer. Forward Guest Cabin 32' LED TV, Naim Uniti Atom audio system with Bluetooth, multizone streaming capability and dedicated app. Paired with upgraded Focal speakers and a subwoofer.

Starboard guest cabin 24' LED TV, Naim Uniti Atom audio system with Bluetooth, multizone streaming capability and dedicated app. Paired with upgraded Focal speakers.

Port guest cabin 32" Mirror/TV, Naim Uniti Atom audio system with Bluetooth, multizone streaming capability and dedicated app. Paired with upgraded Focal speakers.

Crew mess 32" LED TV, Naim Uniti Atom audio system with Bluetooth, multizone streaming capability and dedicated app. Paired with upgraded Focal speakers.

PREMIUM AUDIO UPGRADE (Continued – cost included above)

Flybridge – Naim Uniti Star audio system with Bluetooth, multi-zone streaming capability and dedicated app. Paired with JL Audio waterproof speakers, a subwoofer with amplifier

Cockpit seating area – Naim audio Uniti Atom

Fit 2 x KVH dummy dome (67 cm)

system with Bluetooth, multi-zone streaming capability and dedicated app. Paired with JL Audio waterproof speakers
Foredeck seating walk-through area - Naim Uniti Atom audio system with Bluetooth, multi-zone streaming capability and dedicated app. Paired with JL Audio waterproof speakers
System includes:

- On board Ethernet network and 4G/5G internet capability
 - On board WIFI network incorporating external WIFI and 4G/5G antennae. Enabling connectivity to onshore WIFI networks throughout the vessel including crew and external guest areas. (Mobile internet connectivity requires an activated mobile data SIM card.) Wheelhouse with RJ45 connection as standard.
 - 256GB SD card
 - System is plug and play with external devices via HDMI and AC outlet in all areas, plus RJ45 sockets in saloon and stateroom
 - Combination inverter charger fitted, providing seamless transfer between generators/shore power
-

NAVIGATION

Additional Raymarine Axiom 2 XL 19" brilliant colour multifunction display at upper helm with RMK-10 remote control

Raymarine AIS Class B transponder interfaced with chartplotters

Raymarine Cyclone Pro Radar, 110w pedestal with a 4' open array scanner in place of standard

International VHF

European version plotter

AIRCONDITIONING

Electrosea Electrostrainer fitted on air conditioning sea water inlet.
System is an all-in-one biofouling prevention and straining device that prevents marine growth on sea water pipes and reduces fouling of the air conditioning system impeller.

EXTERIOR UPHOLSTERY / CANVAS / COVERS

Fit reticulated foam to all standard exterior

cockpit, foredeck and flybridge
seating/sunpads in place of standard

SPARES

Spare set of anodes (hull, bow thruster,
hydraulic platform & swim ladder)

Spare anode for optional sternthruster

Spare set of anodes for stabiliser fins

SEA DELIVERY

Compass adjuster to swing both compasses

Supply 5 litre container of engine oil

Ecoworks for Princess - complete boat,
sustainable cleaning solution. Including all
concentrated products - washdown, engine,
rib, teak deck, bilge, glass, all surface, laundry,
fabric, washroom & heads cleaners, sanitiser,
fog buster, wood & wax varnish, washingup
liquid, trigger spray bottles (x4) and jute
storage bag

PRINCESS Y85

+33 6 40 61 88 46 

m.st.pierre@princessyachtsmonaco.com

Follow Princess Yachts Monaco

