

## PRINCESS Y88



SOLD

### HIGHLIGHTS

/ DIRECT DEAL

/ LESS THAN 200 ENGINE  
HOURS

/ BEST PRICE FOR  
POTENTIAL BUYER

/ FAST VIEWING

### SPECIFICATIONS

Localisation	Liguria, Italy	Contenance en eau douce	1500 l
Année	2019	Cabines	4+2
Longueur	26.82 m	Moteurs	Caterpillar C32A 1925
Largeur	6.3 m	Puissance max	2 x 1925 hp
Tirant d'eau	1.78 m	Engine hours	182 m/h
Capacité en carburant	11000 l	Prix	Prix sur demande

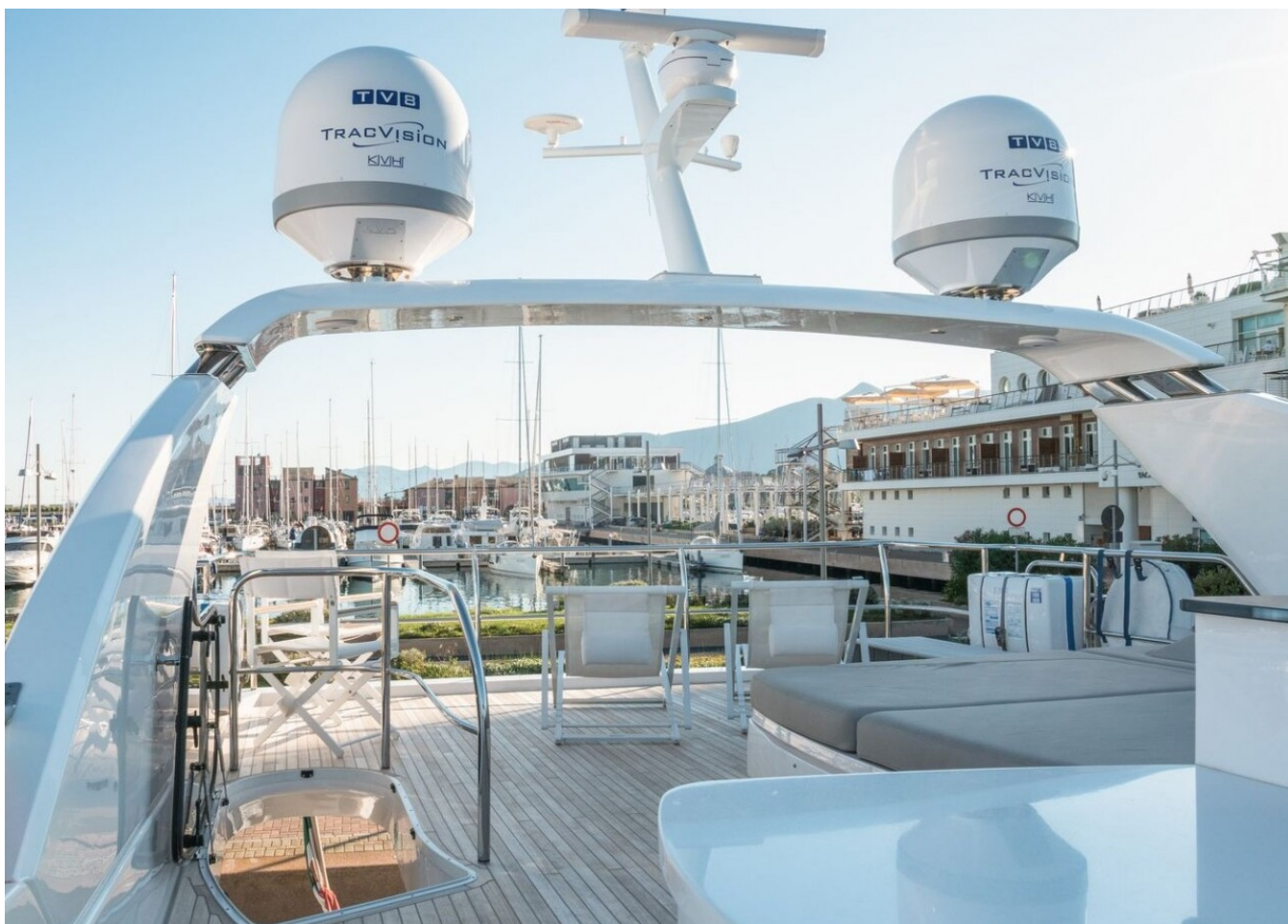












































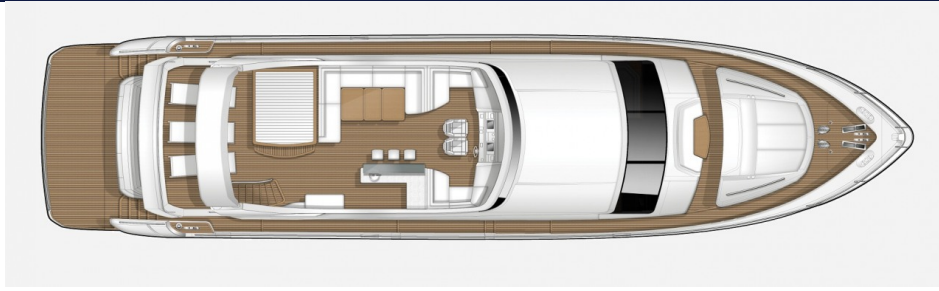






## LAYOUTS

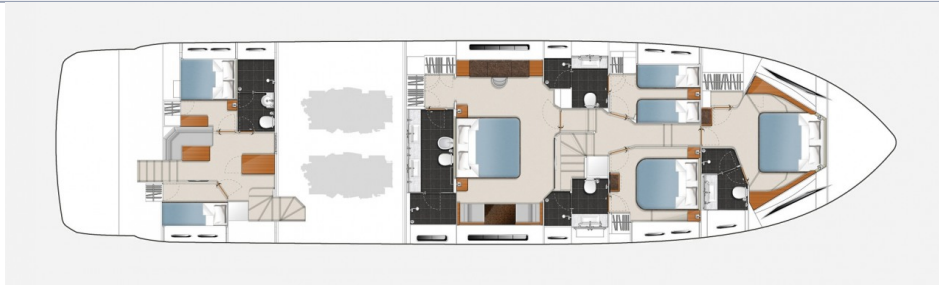
---



FLYBRIDGE



MAIN DECK



LOWER DECK

## EQUIPMENT

---

- Hull colour: White (with dark grey water line, black antifouling, hull & bathing platform fendering is white with stainless steel insert)
- Interior furniture: Alba Oak interior wood satin finish
- European version plotter
- Perso Avorio granite galley worktop
- Bianco Gioia marble worktops and floors in all bathrooms
- International VHF
- Continental 200v/240v sockets
- TRAC Hydraulic system
- Fold down balcony (electro-hydraulic powered) with sliding doors to starboard side of saloon/dining area
- Stern garage for stowage of wetbike or jet-ski including launch system
- Stainless steel Anchors in place of standard (1 x 80kg and 1x50kg)
- Freshwater maker (190 litres/hour)
- Underwater transom lights (4 LUMISHORE SMX52 White)
- Ice maker fitted in flybridge wetbar
- Port cabin 22" LED TV with Fusion MS-AV755 Radio/DVD/MP3 player
- Exterior upgrade Flybridge linked to the saloon audio system Cockpit waterproof speakers linked to the flybridge audio system
- Multifunction digital controller for AV equipment
- Foredeck seating walk-through area-waterproof speakers linked to the flybridge audio system, with separate local control
- KVH T8 Tracvision satellite TV antenna system in 89cm dome
- 89cm Dummy dome
- Satellite TV decoder in Saloon, Master Stateroom, Forward Port and Starboard cabins
- Raymarine 12kw SHD 48" digital colour open array scanner in place of standard 4kw
- Additional Raymarine e165 multifunction 15.4" brilliant colour display at upper helm
- Hydraulically powered bimini with overhead dimmable LED lighting and switched from flybridge console
- Bimini Top to be in two tone Subrella with linen underside



- Foredeck sun awning with carbon fibre poles - White
- Fit reticulated foam to all standard exterior cockpit and flybridge seating/sunpads in place of standard
- Fit reticulated foam to foredeck seating/sunpads in place of standard
- 1kg hull Superstructure gelcoat
- Spare set of anodes for TRAC stabiliser fins
- Compass adjuster to swing both compasses
- Fit reticulated foam to all standard exterior cockpit and flybridge seating/sunpads cushions in place of standard
- Fit reticulated foam to foredeck seating/sunpads in place of standard
- Fit engine driven bilge pump
- Galley wheelhouse and upper lobby floors to be in random Walnut in place of standard
- Saloon/Dining area floor to be in Random Walnut
- Fit putty leather to door handles and handrails in place of standard
- On flybridge supply and fit 2 x dual flybridge helm seats Reduced L shaped seating on flybridge port and starboard forward end
- Preparation for later fitting of the flybridge crane
- Supply removable coffee table for foredeck
- Fit teak decking with grey caulking in place of standard black
- Fit additional fridge in dining area
- Fit dimmer switch to lower passageway lights
- Supply and fit 1 additional backup freshwater pump
- Supply and fit strip LED lighting to flybridge cockpit/transom steps with extended teak nosings
- Galley doors to be in boat timber in place of standard
- Furniture starboard aft entertainment unit worktop panel Sapange Bronze
- Fit teak flooring in crew mess in place of standard oak
- Mosaic tiles in Master Stateroom Forward Port and Starboard cabin bathrooms to be Siminetti Hexagonal Mother of Pearl Bianco
- Master staterooms furniture entertainment unit to be in Alba Oak timber opposed to Macassar ebony
- Galley wheelhouse upper lobby saloon and dining area (no inlays) to be random walnut timber laid running fore and aft in place of standard
- Fit 75MY style glass dining table adapted in size to accommodate 8 place settings with fixed base
- Additional charge in respect of Platinum Leather bedhead, bed surrounds , dressing stools , small rectangular quilted blankets, Jacaranda carpet
- Retrofit: plug in carbon pole shower to swimming platform on starboard side
- Retrofit: plug in carbon pole shower to the flybridge on the port side aft of sunbed
- Retrofit: fit additional batter charger inverter combination unit with 6 x AGM batteries and 9 USB sockets
- Supply and fit coffee table in walnut satin with Calacatta Oro marble (gloss finish) top
- Additions for fabrics
- Providing sea securing of the saloon sofas
- Replace Brown Fabric on wall panel in day head with light fabric
- Replace Roman Blinds in Master Stateroom
- Replace the bulbs in wall lamps throughout the all cabins
- Replace the snake lamps in port guest cabin with wall lamps supplied in all cabins
- Supply the data cables from main engines to upper helm screen in order to have all the readings from engines available for monitoring
- Supply additional CCTV camera on aft of the canopy for viewing of the area around stern

## MOTEURS

---

Caterpillar C32A 1925 (2 x 1925 HP)

## PRINCESS Y88

+33 6 40 61 88 46 

[m.st.pierre@princessyachtsmonaco.com](mailto:m.st.pierre@princessyachtsmonaco.com)

---

Follow Princess Yachts Monaco

