

VAN DER HEIJDEN DYNAMIC 1700



HIGHLIGHTS

/ NEW YACHT

SPECIFICATIONS

| | | | |
|-----------------------|-------------|-------------------------|----------------------|
| Localisation | Netherlands | Contenance en eau douce | 1000 l |
| Année | 2019 | Cabines | 3 |
| Longueur | 17.3 m | Moteurs | IVECO |
| Largeur | 5.35 m | Puissance max | 2 x 450 hp |
| Tirant d'eau | 1.4 m | Engine hours | 50 m/h |
| Déplacement | 35 tonnes | Prix | 1 100 000 € (ex VAT) |
| Capacité en carburant | 3000 l | | |



GALLERY





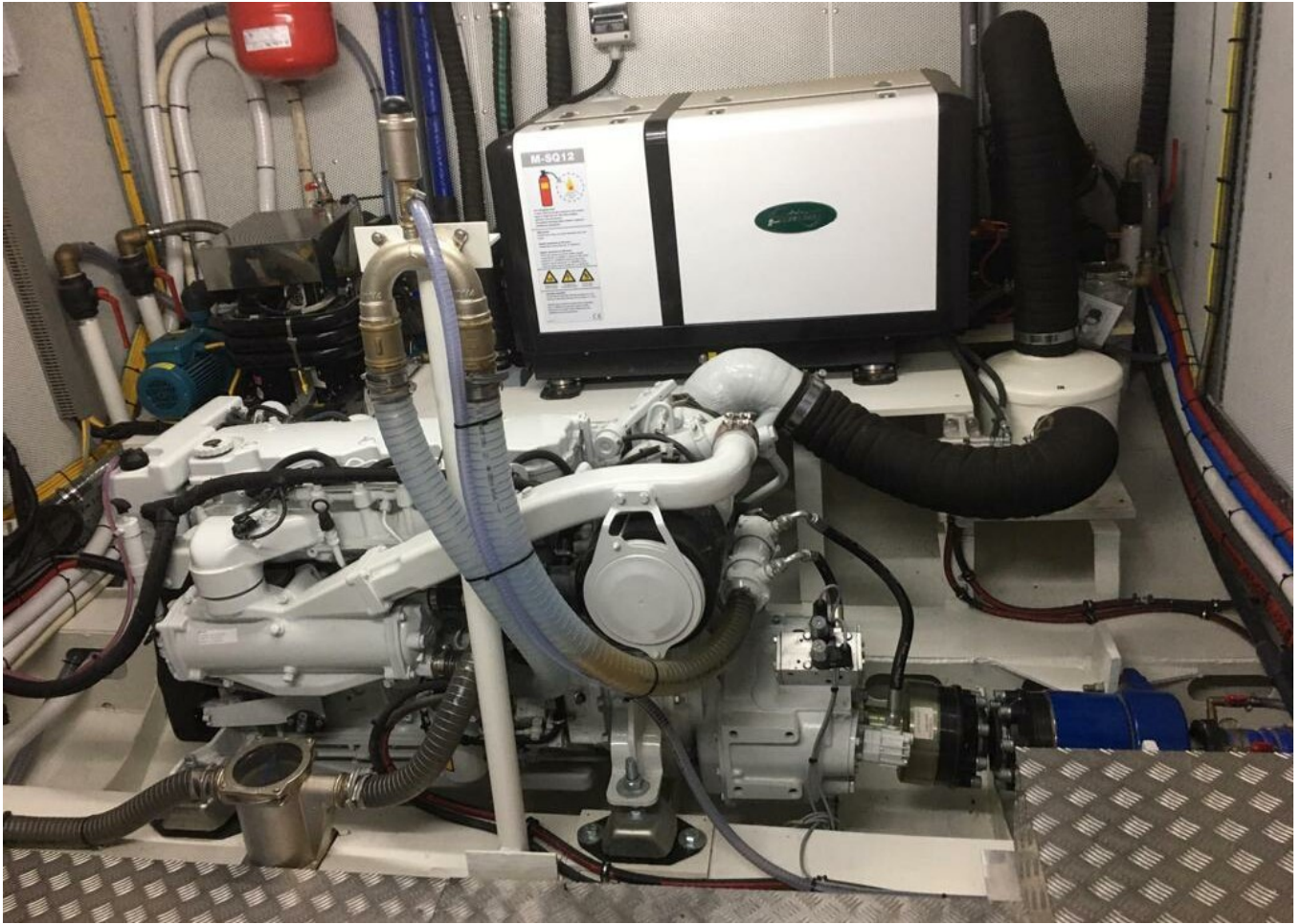
GALLERY











EQUIPMENT

DASHBOARD

- Plotter
- Pilot
- Dept/speed indicator
- Radar
- AIS
- VHF
- GPS
- Electric throttle + remote
- DMS Magnus Master Stabilisator

CONTROL PLANE

- AC
- Victron
- Whisperpower
- Battery indicator
- 2x Iveco engines
- Electric bow and stern thruster.

RADIO

- 2x interior speakers
- 2x exterior speakers
- Bluetooth, USB and AUX

ENGINE ROOM

- Whisper power generator M-SQ12
- Victron inverter 24V 5Kw
- Divorce travo 3600W
- 2x Iveco N67ENTM45 331Kw
- AC Brand: Climma
- Kabola HR400combi diesel heater with underfloor heating

KITCHEN APPLIANCES

- Beko washing machine

- Beko dryer
- Wine climate cabinet
- Bosch dishwasher
- Zanussi combi microwave
- Zanussi refrigerator with freezer
- 2 burner electric hob

EXTERIOR

- Gangway 450Kg Opacmare
- Movable bathing platform
- Underwater lighting

VAN DER HEIJDEN DYNAMIC 1700

+33 6 40 61 88 46 

m.st.pierre@princessyachtsmonaco.com

Follow Princess Yachts Monaco

