

## 2012 DOMINATOR 780S | 23.95 M



BROKERAGE

### SPECIFICATIONS

Posizione	Croatia	Capacità acqua	1385 l
Anno	2012	Cabine	4+2
Lunghezza	23.95 m	Berths	8+4
Larghezza	6 m	Motorizzazione	MAN V12
Pescaggio	2.06 m	Max potenza	2 x 1800 hp
Peso	60 tonnes	Engine hours	295 m/h
Capacità carburante	7500 l	Prezzo	2 250 000 € (ex VAT)







GALLERY





# GALLERY

---

















GALLERY

---









# GALLERY

---





# GALLERY

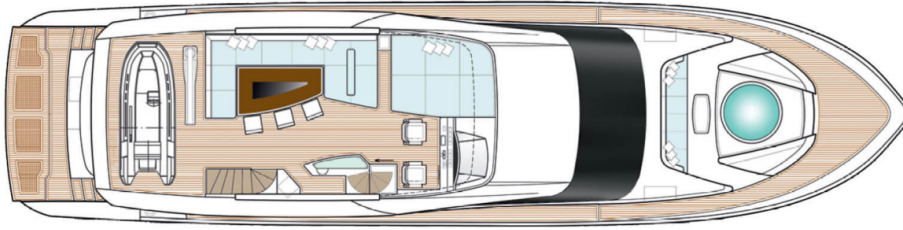
---





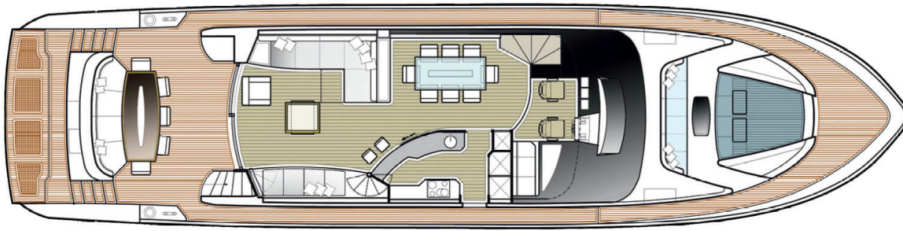
# LAYOUTS

---



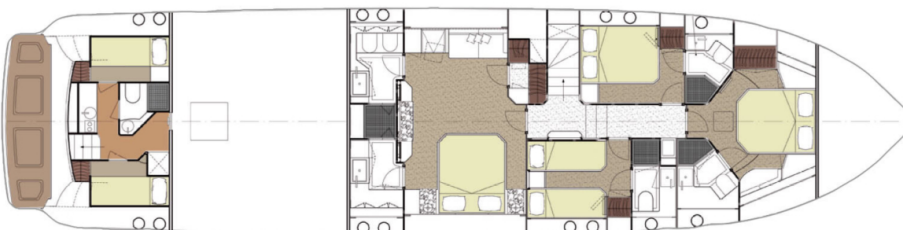
## FLYBRIDGE

---



## MAIN DECK

---



## LOWER DECK

---

# EQUIPMENT

---

## Flybridge

Wide plexiglass windscreen with stainless steel supports

---

Besenzoni G309 electro-hydraulic crane, 400 kg lifting capacity

---

Fiberglass helm console, including:  
Engine and gearbox gauges with LED indicators  
Engine warning monitors  
Engine control levers with emergency function  
Rudder angle indicator  
Fuel level gauge  
Engine room temperature gauge  
Simrad IS20 Wind  
Simrad IS20 Graphic  
Simrad IS20 Compass

---

Simrad IS20 Combi

---

Simrad Autopilot  
AP28

---

Simrad Steering Lever  
S35

---

VHF Radio RAY 240E

---

Searchlight controls

---

Bow and stern thruster  
controls

---

VDO alarm indicators

---

Trim tab controls

---

Intercom station

---

Windlass control

---

Raymarine G150  
chartplotter/radar/GP  
S/fishfinder

---

## Main Deck & Cockpit



Stainless steel sink with hot and cold water taps	Whirlpool barbecue
Refrigerator	

## Safety Equipment

Exterior LED lighting along the side decks	Staircase lighting
LED handrail lighting	Small forward sofa with lockers, cushions, and waterproof cover
Water pipe for foredeck chain locker wash	Forward teak table in front of sofa with stainless steel pedestal and waterproof cover
PROJECT X4 2500W 24V windlass	Teak cockpit table with stainless steel supports and waterproof cover
Windlass control system	Cockpit sunshade
3 windshield wipers with washers	Engine room access from cockpit via stainless steel ladder
Foredeck sunpad area with external cushions, located port, starboard, and above spa pool; fiberglass and stainless steel handrails with waterproof cover	2 weather-resistant speakers in cockpit (main deck)
Fiberglass Jacuzzi with LED lighting	Besenzoni electro-hydraulic bathing ladder - model SI 402
Reinforced safety glass windows with sunshades	2 shore power cables and 220V 32A sockets with 20 m cable
2 electric warping winches on the foredeck (technical area)	Cockpit shower with hot and cold water
Sanguineti anchor, model SC92, 90 kg galvanized	Electric waterproof side door (Nemo) to galley
14 mm anchor chain,	Glendinning cable reel

100 m	(one side)
Chain wash system	3 helm stations in the cockpit (engine start/stop, bow/stern thrusters, windlass)
SANSHIN spotlight on the bow	
LED ceiling lights in cockpit according to lighting plan T4	Infrared camera

### Swim Platform

1 lifebuoy	2 x 8-person life rafts
1 first aid kit	1 marine horn
1 life ring	1 ship's bell
1 floating line	7 x 2kg dry powder fire extinguishers
16 life jackets	

### Upper Deck – Salon

Folding swim platform with H+B Technics hydraulic arms, 1000 kg lifting capacity  
Usable lifting capacity (excluding platform weight):  
-700 kg

### Galley

Leather sofas	Ice maker - CLASSIC REFILL PF DX
Coffee table	220-240V 50Hz
1 sunlounger	220V socket
1 leather pouf	Electric blinds
Starboard cabinetry	Wooden flooring



with 40' TV	Marble floor at entry
Ceiling LED lighting	BOSE Dolby Digital Lifestyle 38 sound system
Bar with sliding partitions	HUMAX F3-FOX CI digital satellite receiver (central unit)
Portside dining area with large table for 8	ORION analog telephone

## Wheelhouse

WHIRLPOOL EXTRACTOR IX hood	Wooden flooring
WHIRLPOOL 40L CRISP microwave	Marble countertop
BOSCH 4-burner ceramic cooktop	Fire extinguisher
Refrigerator + freezer, 250L (220V & 24V) (sea water cooled)	Full dinnerware set for 8 with glasses, stainless steel plates and cutlery
Stainless steel sink with hot/cold mixer tap	Blinds
Bosch dishwasher, model SRV 46A63	LED ceiling lights
Vertical storage cabinet	

## Lower Deck – Owner's Cabin

1 leather pilot seat with electric adjustment	Curtains
LED ceiling lights	Access stairs with stainless steel safety handrail
Chart storage drawer	BCS hydraulic steering system
Wooden flooring	Infrared camera monitor (engine room)

and wheelhouse)

---

## Owner's Bathroom

BOSE Dolby Digital Lifestyle 38 sound system

---

Walk-in wardrobe with lighting, drawers, and hangers

---

Humax F3 CI digital satellite receiver

---

Safe

---

2 bedside tables

---

Large windows with opening portholes

---

2 reading lights

---

220V socket

---

Leather sofa

---

Electric blackout blinds

---

Leather pouf lounge area

---

ORION analog telephone

---

Bulkhead-mounted 32" TV

---

## VIP Cabin

Hydromassage shower

---

Blinds

---

2 glass washbasins

---

Stainless steel porthole with mosquito screen

---

2 marble countertops

---

Shower extractor fan

---

LED ceiling lights

---

220V socket

---

1 Tecma electric toilet (large)

---

Marble flooring

---

1 Tecma bidet

---

2 large mirrors with halogen lighting

---

## VIP Bathroom

2 bedside tables

---

220V socket

---

2 wall lights at headboard

---

Sunshades

---

Halogen ceiling lights

---

BOSE Dolby Digital 3.2.1 GS

---



Stainless steel side portholes with mosquito screens	Humax F3-FOX CI digital satellite receiver (central unit)
Emergency hatch with ladder to forward main deck	25" LED TV
LED ceiling lights	ORION analog telephone

### Guest Cabins (x2)

Shower with teak floor	Marble flooring
Extractor fan	220V socket
Ceramic basin with marble countertop and storage	Blinds
Mirror with halogen lighting	Tecma electric toilet with bidet function
Hot/cold water mixer	LED ceiling lights
Stainless steel porthole with mosquito screen	

### Guest Bathrooms

BOSE Dolby Digital 3.2.1 GS	Headboard lamp
ORION analog telephone	220V socket
LED ceiling lights	Curtains
2 stainless steel portholes with mosquito screens and sunshades	25" LED TV

### Engine Room

Extractor fan	220V socket
Shower with teak	Blinds

grating	Tecma electric toilet with bidet function
Ceramic/glass or marble washbasin	LED ceiling lights
Mirror cabinet with halogen lighting	Dedicated 3-way drainage system overboard (only in guest heads)
LED ceiling lights	
Stainless steel portholes with mosquito screens	

## Power Supply

2 x MAN 1800 HP main engines	Fully sound-insulated engine room
ZF 3050 V gearboxes, ratio 2714:1	Cathodic protection system with zinc anodes
V-drive configuration, stand-alone	95 mm stainless steel shafts with OTMAN shaft brackets, GRP stern tubes, and carbon/stainless shaft seals
Double-shaft coupling	
Driveshaft between engines and gearboxes	5-blade ROLLA Nibral 1067×1400 propellers

## Lighting

2 x ONAN MDKBF 22.5 kW generators (engine room)	3 x 80A battery chargers (Mastervolt) for service, engines, and generators
2 x 220V shore power sockets	

## Air Conditioning

220V main LED lighting	24V stair lighting
24V waterproof exterior LED lights	



2012

DOMINATOR

780S | 23.95 M

+33 6 40 61 88 46 

m.st.pierre@princessyachts  
monaco.com

---

Follow Princess Yachts Monaco

