

2021 BENETTI DELFINO 95' | 29M



BROKERAGE

SPECIFICATIONS

Posizione	SPLIT, Croatia	Cabine	5
Anno	2021	Berths	10 people
Lunghezza	28.95 m	Motorizzazione	MAN V8 1000 735kW
Larghezza	7 m	Max potenza	1971 hp
Pescaggio	1.89 m	Velocita	14kn
Capacità carburante	120000 l	Engine hours	2117 m/h
Capacità acqua	12500 l	Prezzo	Prezzo alla richista



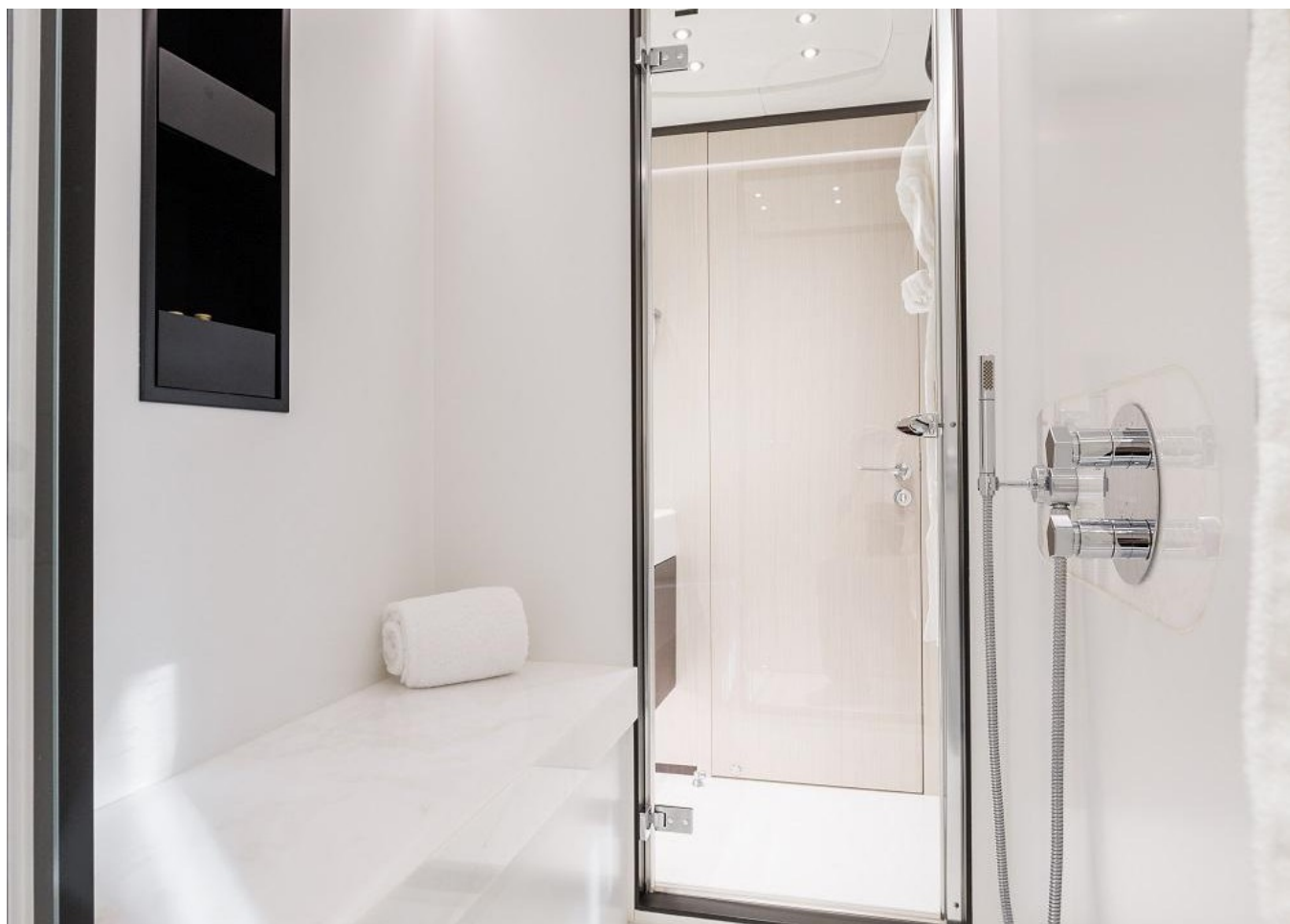
























EQUIPMENT

Shore Power Inlet

Generator

Inverter

Depthsounder

Radar

Log-Speedometer

Radar Detector

Wind Speed and Direction

Computer

Repeater(s)

TV Set

Navigation Centre

VCR

Plotter

DVD Player

Autopilot

Radio

Compass

CD Player

GPS

Cockpit Speakers

VHF

Flat Screen TV

seakeeper

Stern Thruster

Dishwasher

Bow Thruster

Washing Machine

Electric Bilge Pump

Oven

Manual Bilge Pump

Microwave Oven

Air Compressor

Marine Head

Air Conditioning

Electric Head

Heating

Chemical Head

Hot Water

Refrigerator

Fresh Water Maker

Deep Freezer

Sea Water Pump

Battery Charger

Teak Cockpit

Cockpit Shower

Teak Sidedecks

Outboard Engine Brackets

Gangway

Davit(s)

Hydraulic Gangway	Radar Reflector
Wind Generator	Tender
Solar Panel	Liferaft
Cockpit Cushions	Cockpit Table
Swimming Ladder	Water Toys
Garage	Jacuzzi

2021 BENETTI DELFINO 95' | 29M

Follow Princess Yachts Monaco

