

## 2021 PRINCESS X95



BROKERAGE

### HIGHLIGHTS

/ 5 CABIN LAYOUT	/ FIN ZERO-SPEED STABILISERS	/ SKYLounge WITH JACUZZI
/ UNDERWATER LIGHTS	/ HEATED FLOOR IN ALL BATHROOMS	/ HIGH-END AV/TV
/ FLIR CAMERA	/ ALL BIMINIS	/ EXTRA CABINS SOUNDPROOFING

### SPECIFICATIONS

Posizione	Turkey	Capacità acqua	1805 l
Anno	2021	Cabine	5+3
Lunghezza	29.11 m	Motorizzazione	MAN V12
Larghezza	6.71 m	Max potenza	2 x 1900 hp
Pescaggio	2.03 m	Engine hours	1100 m/h
Peso	104 tonnes	Prezzo	10 000 000 € (inc VAT)
Capacità carburante	13400 l		

The yacht is on the commission of Princess Yacht Monaco. The Company is not responsible for the accuracy of the information provided by the Yacht owner (images, specification, parameters, engine performance, legal, etc). The operating time of the engines is indicated at the time of preparation of the information and may change during further operation. The need for an inspection remains at the discretion of the Buyer. Exact parameters and characteristics can be specified in the contract of sale. Additional information is available upon request.























































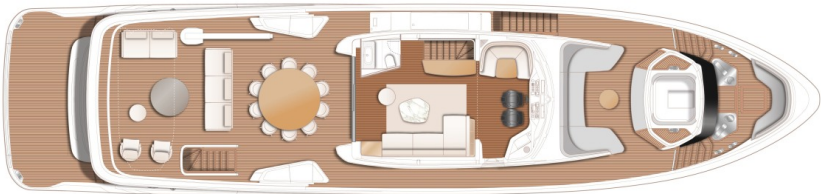






# LAYOUTS

---



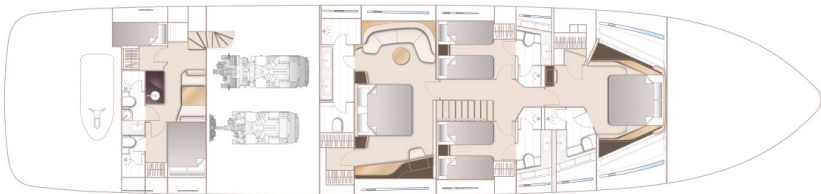
FLYBRIDGE

---



MAIN DECK

---



LOWER DECK

---

# EQUIPMENT

---

Princess X95 Motor Cruiser molded in glass fiber and fitted with Twin MAN V12 1900 (2 x 1900 h.p. each)

Standard crew cabin layout with Wetbike garage with additional storage for seabobs (2);

Standard hydraulic system

International VHF;

Joystick Aventions (Dual Station) (operates both engines, bow thruster and optional stern

Interiors: SILVER OAK SATIN

Galley worktop: Granite or Quartz;

Electro hydraulic transformer platform with 1000Kg SWL fitted as standard;

Electrical Continental 220v/240v sockets;

Hydraulic Stern thruster (variable speed 420 KgF);



thruster);

---

Sleipner Hydraulic system (consisting of separate engine driven hydraulic pumps on each engine with cross connections allowing any system to be supplied with hydraulic power from either engine) and incorporating SPS92/VF1350 vector fin stabiliser system.

---

Optional five (5) stateroom layout

---

Starboard cabin to have double berth conversion with powered sliding mechanism on inboard berth (not available if Pullman berth is specified)

---

Skylounge day head with basin, bidet and storage locker;

---

Wall mounted bidet douche shower fitted at all guest toilets (7);

---

Additional (navigation) helm seat in wheelhouse;

---

Side entry gates to aft port & starboard side decks in addition to standard passerelle;

---

8mm teak decking upgrade throughout;

---

Flybridge bar unit included in outboard sideboard (including drawer refrigerator, icemaker, sink and storage cupboard);

---

Plug in carbon pole shower and deck socket to aft flybridge deck;

---

Upgrade to two ONAN 50kW/50Hz generators to be fitted in place of standard;

---

High impact mini dome anchor pocket camera x 2 (one for each anchor);

---

Dial in CCTV system with recording;

---

8 x Lumishore THX 403 (4 per side);

---

Technicomar ECOMar 20s sewage treatment

---

Flybridge coaming painted in Platinum metallic paint;

---

Saloon & bar area floors to be in 'V' groove planked wood with inlaid rug\* in aft saloon area (wood type same as galley, dining & helm);

---

Port cabin to have double berth conversion with powered sliding mechanism on inboard berth (not available if Pullman berth is specified);

---

Deck saloon to have opening patio door on starboard in place of full height windows;

---

Steam Shower fitted at Master and aft VIP cabin toilets ;

---

Spa bath on foredeck (includes increased calorifier and water pump capacity) in place of standard Sun pad;

---

Cockpit bar unit (including drawer refrigerator, icemaker, sink and storage cupboard);

---

Stainless steel anchors in place of standard;

---

Third station controls on starboard side of flybridge coaming (engine controls, thruster controls and engine emergency stops);

---

Plug in carbon pole transom shower and deck socket to bathing platform;

---

Optional top loading cool box in place of port foredeck storage locker;

---

Upgrade horn to twin Kahlenberg including signal timer;

---

Underwater transom lights 4 x Lumishore THX 403 (Blue & White);

---

Freshwater maker (190l/hr)

---

Underfloor heating in bathrooms (5);

---



plant;

---

Miele Professional washing machine and tumble dryer fitted in crew area;

---

Main deck Master Stateroom – 55’ UHD Smart LED TV on power lift, Naim Uniti Atom audio system

---

Cockpit seating area to have 42’ exterior TV on hinge down mechanism;

---

Starboard guest cabin 28’ HD LED TV, Naim Uniti Atom audio system

---

Crew mess 28’ HD LED TV, Naim Uniti Atom audio system

---

Internal telephone system with PBX exchange with handsets in all cabins (including crew cabin) and at helm position (includes forward/dinette, optional main deck master);

---

Satellite TV decoder (common interface) (10)

---

FLIR camera (M625L);

---

Additional Raymarine 12kw SHD 48’ digital colour open array scanner

---

Carbon fibre pole mounted awning to aft end of flybridge deck in charcoal grey mesh;

---

Steam shower at the Master cabin

---

Reticulated foam to all standard exterior cockpit and foredeck fixed furniture (loose furniture items on the sundeck and loose cockpit chairs, if selected, are not included)

---

Optional Main Deck Master soundproofing

---

Crew cabin Sound proofing – deck head/headlining to have Dynamat extreme and Rockwool added

---

Additional washer/dryer located in guest lobby area;

---

Cockpit seating area – Naim Uniti Atom audio system with Bluetooth

---

Flybridge area to have 42’ exterior TV on hinge down mechanism;

---

Port guest cabin 28’ HD LED TV, Naim Uniti Atom audio system

---

Foredeck seating walk-through area – Naim Uniti Atom audio system

---

KVH (TV8) Tracvision – in 80cm dome (linked to saloon and skylounge)

---

Marine router acting as a single control point for Satphone (when selected), 3G/4G services and marine WiFi networks. Easily accessed and controlled via a web browser on any connected device, the router allows the owner and/crew to control and restrict internet connections

---

Additional Raymarine Axiom X 19’ brilliant colour multifunction display at

---

Raymarine AIS Class B transponder interfaced with chartplotter & with 8ft (2.4m) aerial;

---

Foredeck sun awning with 4 carbon fibre poles (grey mesh) and deck mounting sockets;

---

Steam shower at the aft VIP cabin

---

To supply and fit fuel station in garage with fuel delivered from day tank

---

Fit additional acoustic insulation to the engine room bulkheads and deck head

---

Lining of the hull sides with Dynamat extreme to minimize level of splashing water noise in lower cabins

---



Multimedia control system iPad based  
(additional two weeks for the labors required)

---

Tender Williams DieselJet 505 2020

---

Optional transom configuration - Incorporating  
aft lazarette area, 2 crew cabins with bunks in  
each, Captain's cabin with 1 bed and 2 separate  
bathrooms

---



## 2021 PRINCESS X95

+33 6 40 61 88 46 

[m.st.pierre@princessyachtsmonaco.com](mailto:m.st.pierre@princessyachtsmonaco.com)

---

Follow Princess Yachts Monaco

