

2022 AZIMUT MAGELLANO 66 EVO |
20M

Notice: Undefined property:
YachtCardFields::\$Price in
/var/www/html/wp-
content/themes/princessyachts/pdf/yacht
pdf.php on line 42



SOLD

SPECIFICATIONS

| | | | |
|---------------------|----------------|----------------|----------------------|
| Posizione | Toscana, Italy | Cabine | 5 |
| Anno | 2022 | Motorizzazione | MAN i850 |
| Lunghezza | 20.15 m | Max potenza | 1700 hp |
| Larghezza | 5.54 m | Velocita | 25kn |
| Pescaggio | 1.72 m | Engine hours | 646 m/h |
| Capacità carburante | 4500 l | Prezzo | Prezzo alla richista |
| Capacita aqua | 1000 l | | |

Yachts on the commission of Princess Yacht Monaco. The Company is not responsible for the accuracy of the information provided by the Shipowner (images used, yacht specifications, parameters, engine performance, legal design issues). The operating time of the engines is indicated at the time of preparation of the information and may change during further operation. The need for an inspection remains at the discretion of the Buyer. Exact parameters and characteristics can be specified in the contract of sale. Additional information is available from the manager on request.



MAGELLANO 66 EVO, l'affascinante navetta del cantiere Azimut Yachts. Imbarcazione adatta a lunghe navigazioni senza rinunciare al comfort e alle prestazioni. Il modello proposto in vendita ha l'ambiente salone diviso dalla cucina e dalla postazione di comando, per garantire agli ospiti privacy e comfort, con i percorsi per l'equipaggio divisi. Il lay out della zona notte è diviso in 2 comode cabine matrimoniali, 2 doppie, 3 bagni. Cabina equipaggio a 2 posti con accesso da poppa e bagno privato. Barca full optional con Hard Top, stabilizzatore giroscopico e doppio generatore. Vi aspettiamo per accompagnarvi a bordo.

English

MAGELLANO 66 EVO, the fascinating shuttle from the Azimut Yachts shipyard. Boat suitable for long voyages without sacrificing comfort and performance. The model offered for sale has a saloon area divided from the galley and the helm station, to ensure guests privacy and comfort, with the crew paths divided. The layout of the sleeping area is divided into 2 comfortable double cabins, 2 twin cabins, 3 bathrooms. 2-seater crew cabin with stern access and en-suite bathroom. Full optional boat with Hard Top, gyroscopic stabilizer and double generator. We are waiting for you to accompany you on board.

Française

MAGELLANO 66 EVO, la fascinante navette du chantier Azimut Yachts. Bateau adapté aux longs voyages sans sacrifier le confort et les performances. Le modèle proposé à la vente dispose d'un salon séparé de la cuisine et du poste de barre, pour assurer l'intimité et le confort des invités, avec les chemins d'équipage divisés. L'aménagement de l'espace nuit est divisé en 2 cabines doubles confortables, 2 cabines twin, 3 salles de bain. Cabine équipage 2 places avec accès arrière et salle de bain attenante. Bateau entièrement optionnel avec Hard Top, stabilisateur gyroscopique et double générateur. Nous vous attendons pour vous accompagner à bord.

Deutsch

MAGELLANO 66 EVO, das faszinierende Shuttle von der Azimut Yachts Werft.

Boot, das für lange Reisen geeignet ist, ohne auf Komfort und Leistung zu verzichten.

Das zum Verkauf angebotene Modell verfügt über einen Salonbereich, der von der Kombüse und dem Steuerstand getrennt ist, um den Gästen Privatsphäre und Komfort zu gewährleisten, wobei die Wege der Besatzung geteilt sind.

Die Aufteilung des Schlafbereichs ist in 2 komfortable Doppelkabinen, 2 Zweibettkabinen und 3 Badezimmer unterteilt. 2-Sitzer-Crew-Kabine mit Heckzugang und eigenem Bad.

Voll optionales Boot mit Hardtop, gyroskopischem Stabilisator und Doppelgenerator.

Wir warten darauf, dass Sie Sie an Bord begleiten.

Español

MAGELLANO 66 EVO, la fascinante lanzadera del astillero Azimut Yachts.

Embarcación apta para largas travesías sin renunciar a la comodidad y el rendimiento.

El modelo que se pone a la venta tiene una zona de salón separada de la cocina y el puesto de mando, para garantizar la privacidad y el confort de los huéspedes, con los caminos de la tripulación divididos.

La distribución de la zona de noche se divide en 2 cómodas cabinas dobles, 2 cabinas dobles, 3 baños. Cabina de tripulación de 2 plazas con acceso a popa y baño en suite.

Embarcación totalmente opcional con techo rígido, estabilizador giroscópico y doble generador.

Te esperamos para acompañarte a bordo.

Nederlands

MAGELLANO 66 EVO, de fascinerende shuttle van de scheepswerf van Azimut Yachts.

Boot geschikt voor lange reizen zonder in te boeten aan comfort en prestaties.

Het model dat te koop wordt aangeboden, heeft een salon die is gescheiden van de kombuis en de stuurstand, om de privacy en het comfort van de gasten te garanderen, met de bemanningspaden verdeeld.

De indeling van het slaapgedeelte is verdeeld in 2 comfortabele tweepersoonshutten, 2 tweepersoonshutten, 3 badkamers. 2-persoons bemanningscabine met toegang tot de achtersteven en en-suite badkamer.

Volledig optionele boot met hardtop, gyroscopische stabilisator en dubbele generator.

We wachten op u om u aan boord te vergezellen.

Русский

MAGELLANO 66 EVO, завораживающий шаттл от верфи Azimut Yachts.

Лодка подходит для длительных путешествий без ущерба для комфорта и производительности.

Предлагаемая к продаже модель имеет салон, отделенный от камбуза и поста управления, чтобы обеспечить гостям уединение и комфорт, при этом пути экипажа разделены.

Планировка спальной зоны разделена на 2 комфортабельные двухместные каюты, 2 каюты с двумя односпальными кроватями, 3 ванные комнаты. 2-местная каюта экипажа с выходом на корму и ванной комнатой.

Полностью опциональная лодка с жестким верхом, гироскопическим стабилизатором и двойным генератором.

Мы ждем вас, чтобы сопровождать вас на борту.





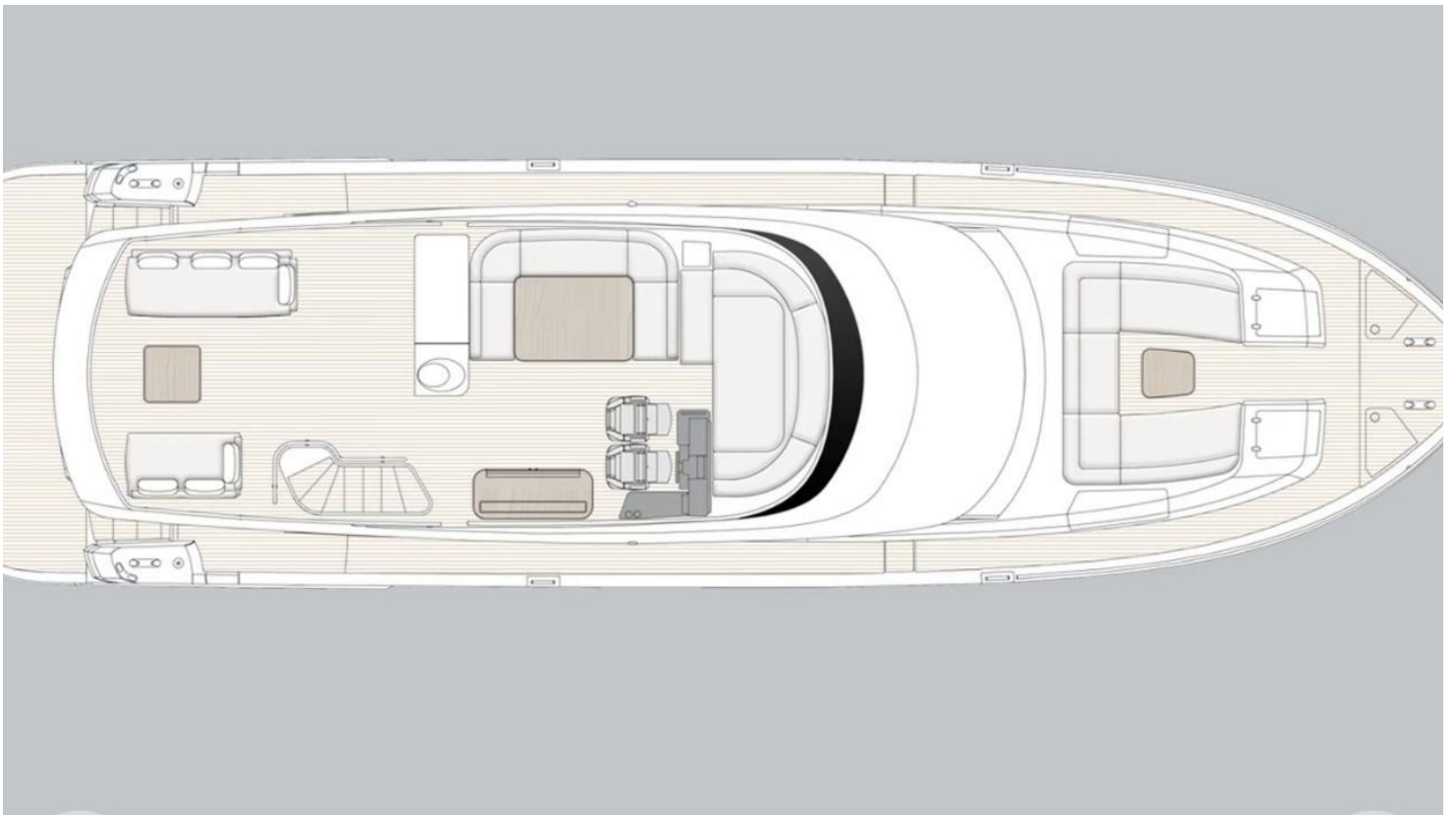


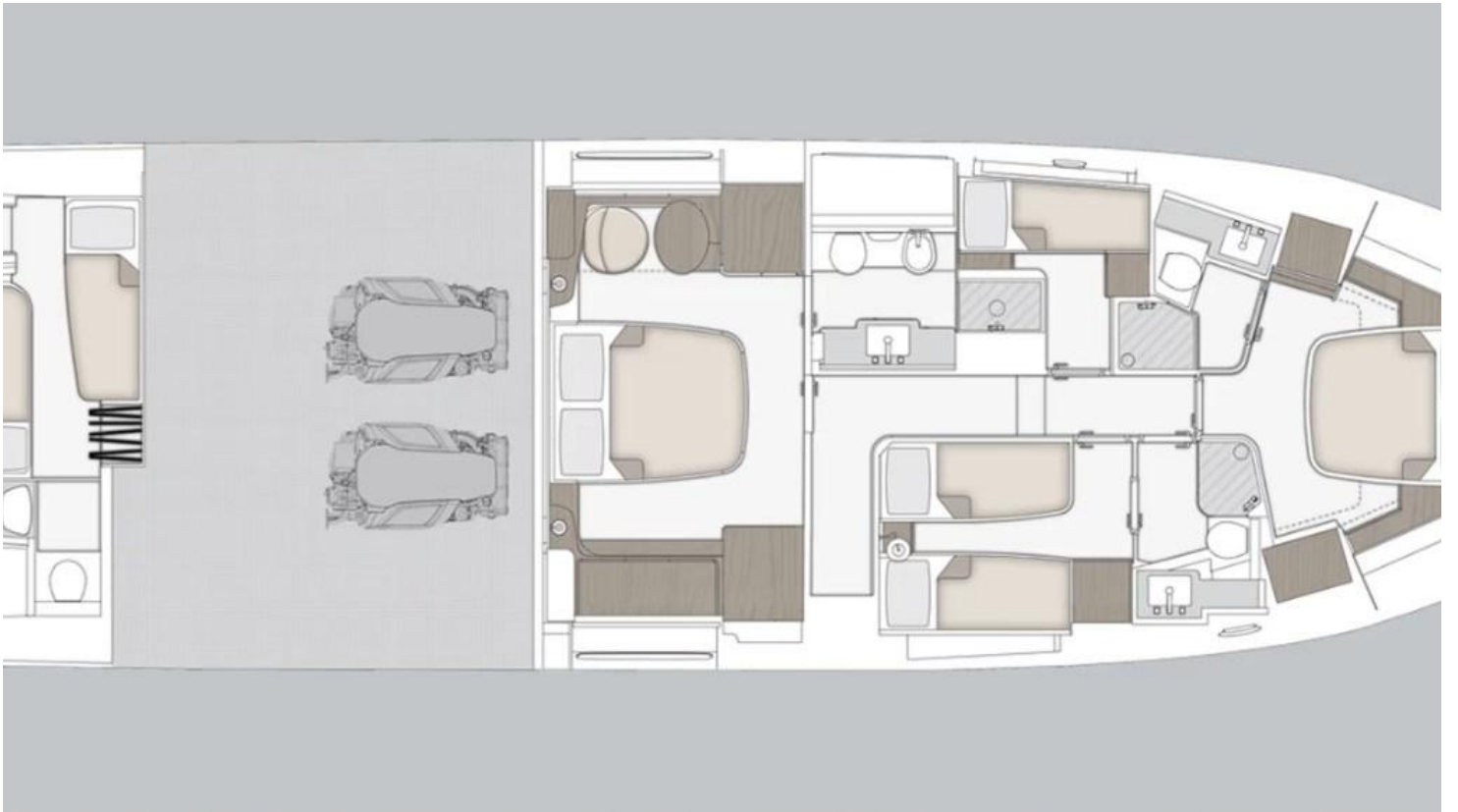












EQUIPMENT

Depthsounder:Raymarine CP 100 fishfinder

Shore Power Inlet

Generator:1 x 19 kW - Onan

ELECTRONICS

Depthsounder:Raymarine CP 100 fishfinder

Radar

- TV Set:Up and down

AIS:Raymarine 700

INSIDE EQUIPMENT

seakeeper:Seakeeper NG16

Dishwasher:Miele

Bow Thruster:10 kW 24V with Xenta joystick

Oven:Miele

Air Conditioning:92000 BTU

Refrigerator:300 lt

Fresh Water Maker:130 l/h

Deep Freezer

- Battery Charger:Qty: 2

OUTSIDE EQUIPMENT

Teak Cockpit

- Teak Sidedecks

Radar

- TV Set:Up and down

Notice: Undefined offset: 1 in /var/www/html/wp-content/themes/princessyachts/pdf/yacht-pdf.php on line 241

AIS:Raymarine 700

Notice: Undefined offset: 2 in /var/www/html/wp-content/themes/princessyachts/pdf/yacht-pdf.php on line 241

seakeeper:Seakeeper NG16

Notice: Undefined offset: 3 in /var/www/html/wp-content/themes/princessyachts/pdf/yacht-pdf.php on line 241

Dishwasher:Miele

Notice: Undefined offset: 4 in /var/www/html/wp-content/themes/princessyachts/pdf/yacht-pdf.php on line 241

Bow Thruster:10 kW 24V with Xenta joystick

Notice: Undefined offset: 5 in /var/www/html/wp-content/themes/princessyachts/pdf/yacht-pdf.php on line 241

Oven:Miele

Notice: Undefined offset: 6 in /var/www/html/wp-content/themes/princessyachts/pdf/yacht-pdf.php on line 241

Air Conditioning:92000 BTU

Notice: Undefined offset: 7 in /var/www/html/wp-content/themes/princessyachts/pdf/yacht-pdf.php on line 241

Refrigerator:300 lt

Notice: Undefined offset: 8 in /var/www/html/wp-content/themes/princessyachts/pdf/yacht-pdf.php on line 241

Fresh Water Maker:130 l/h

Notice: Undefined offset: 9 in /var/www/html/wp-content/themes/princessyachts/pdf/yacht-pdf.php on line 241

Deep Freezer

- Battery Charger:Qty: 2

Notice: Undefined offset: 10 in /var/www/html/wp-content/themes/princessyachts/pdf/yacht-pdf.php on line 241

2022 AZIMUT MAGELLANO 66 EVO |
20M

Notice: Undefined property:
YachtCardFields::\$Price in
/var/www/html/wp-
content/themes/princessyachts/pdf/yacht
pdf.php on line 273

Follow Princess Yachts Monaco



Yachts on the commission of Princess Yacht Monaco. The Company is not responsible for the accuracy of the information provided by the Shipowner (images used, yacht specifications, parameters, engine performance, legal design issues). The operating time of the engines is indicated at the time of preparation of the information and may change during further operation. The need for an inspection remains at the discretion of the Buyer. Exact parameters and characteristics can be specified in the contract of sale. Additional information is available from the manager on request.