

2023 PRINCESS F50



BROKERAGE

HIGHLIGHTS

- / LOW ENGINE HOURS
- / 3 CABINS
- / EU VAT PAID
- / EXTERIOR DECKS FULLY IN TEAK
- / HYDRAULIC PLATFORM
- / ONAN 11 KWT GENERATOR
- / BIMINI TOP ON THE FLYBRIDGE

SPECIFICATIONS

Posizione	Antibes, France	Cabine	3+1
Anno	2023	Berths	6
Lunghezza	15.7 m	Motorizzazione	Volvo IPS 800
Larghezza	4.3 m	Max potenza	2 x 600 hp
Pescaggio	1.39 m	Velocita	34
Peso	21.3 tonnes	Engine hours	320 m/h
Capacità carburante	1850 l	Prezzo	1 290 000 € (inc VAT)
Capacità acqua	428 l		

The yacht is on the commission of Princess Yacht Monaco. The Company is not responsible for the accuracy of the information provided by the Yacht owner (images, specification, parameters, engine performance, legal, etc). The operating time of the engines is indicated at the time of preparation of the information and may change during further operation. The need for an inspection remains at the discretion of the Buyer. Exact parameters and characteristics can be specified in the contract of sale. Additional information is available upon request.









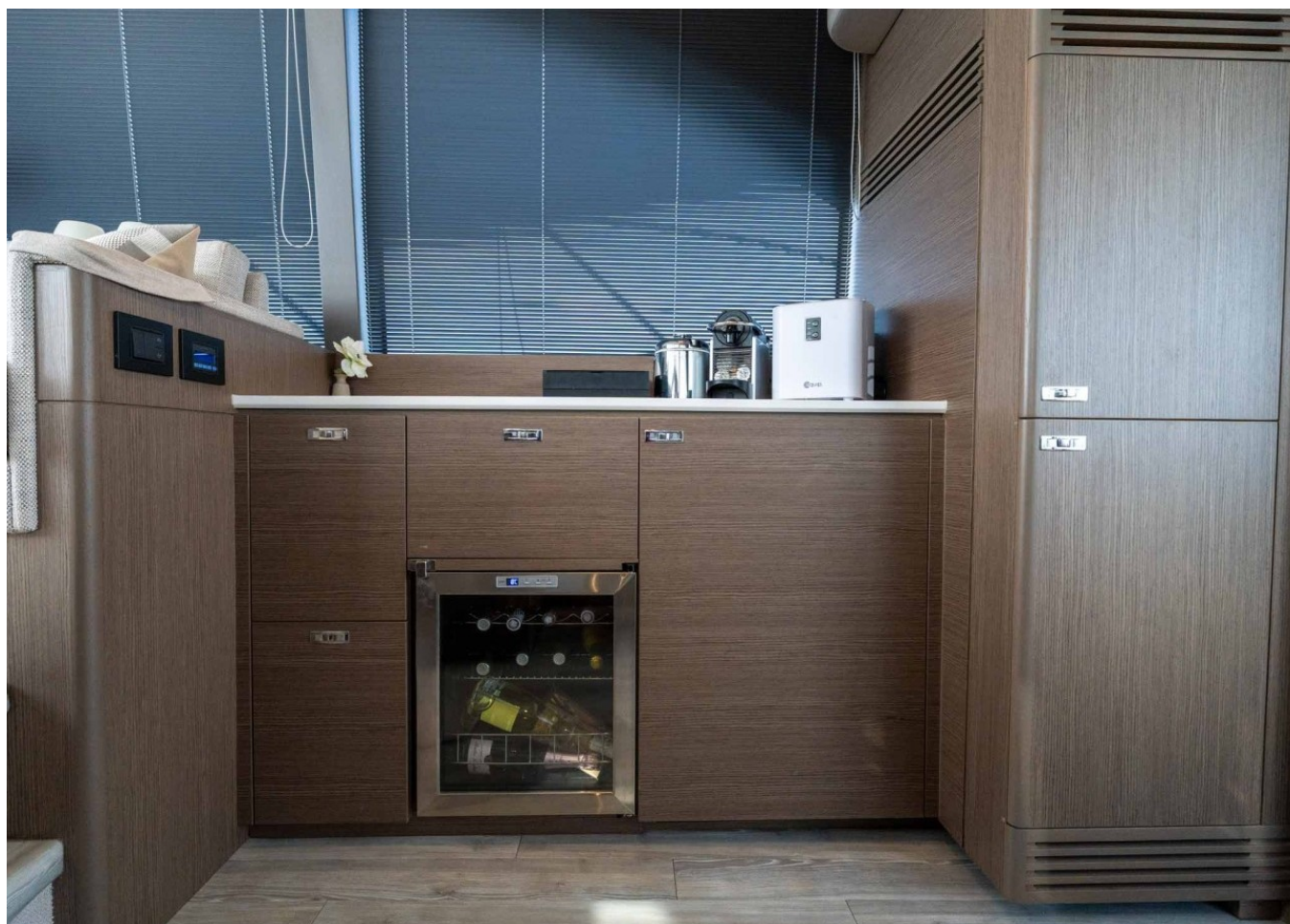






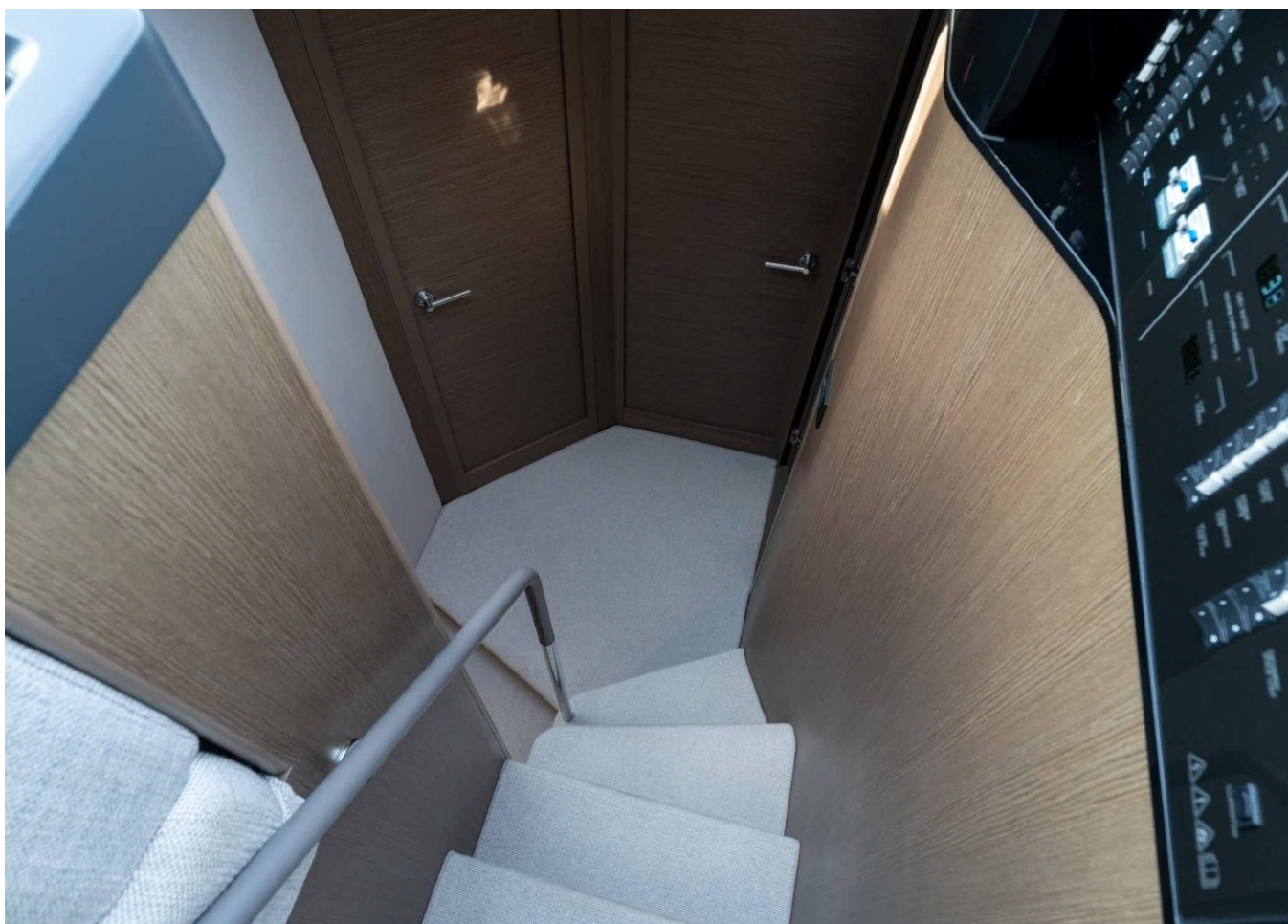


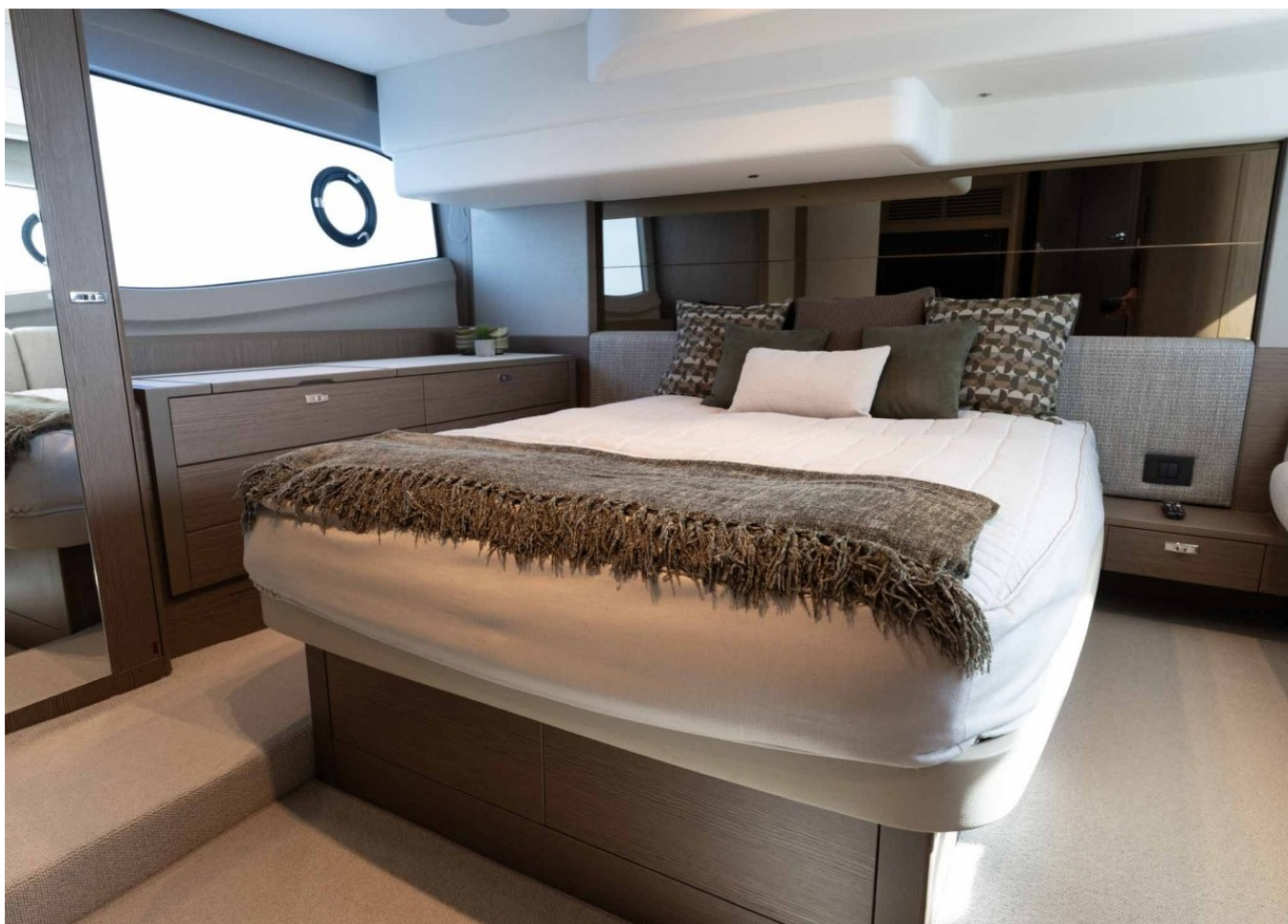
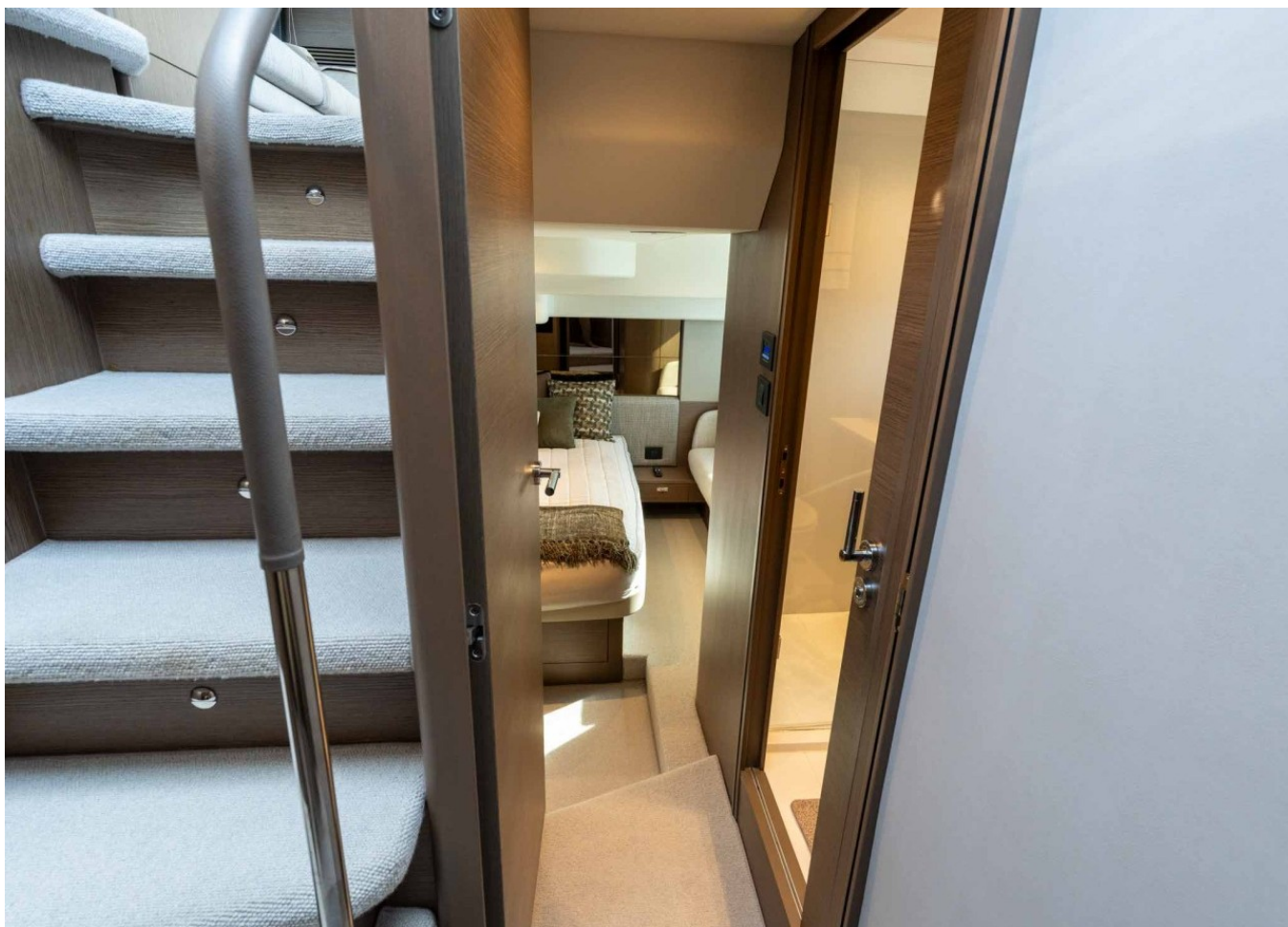








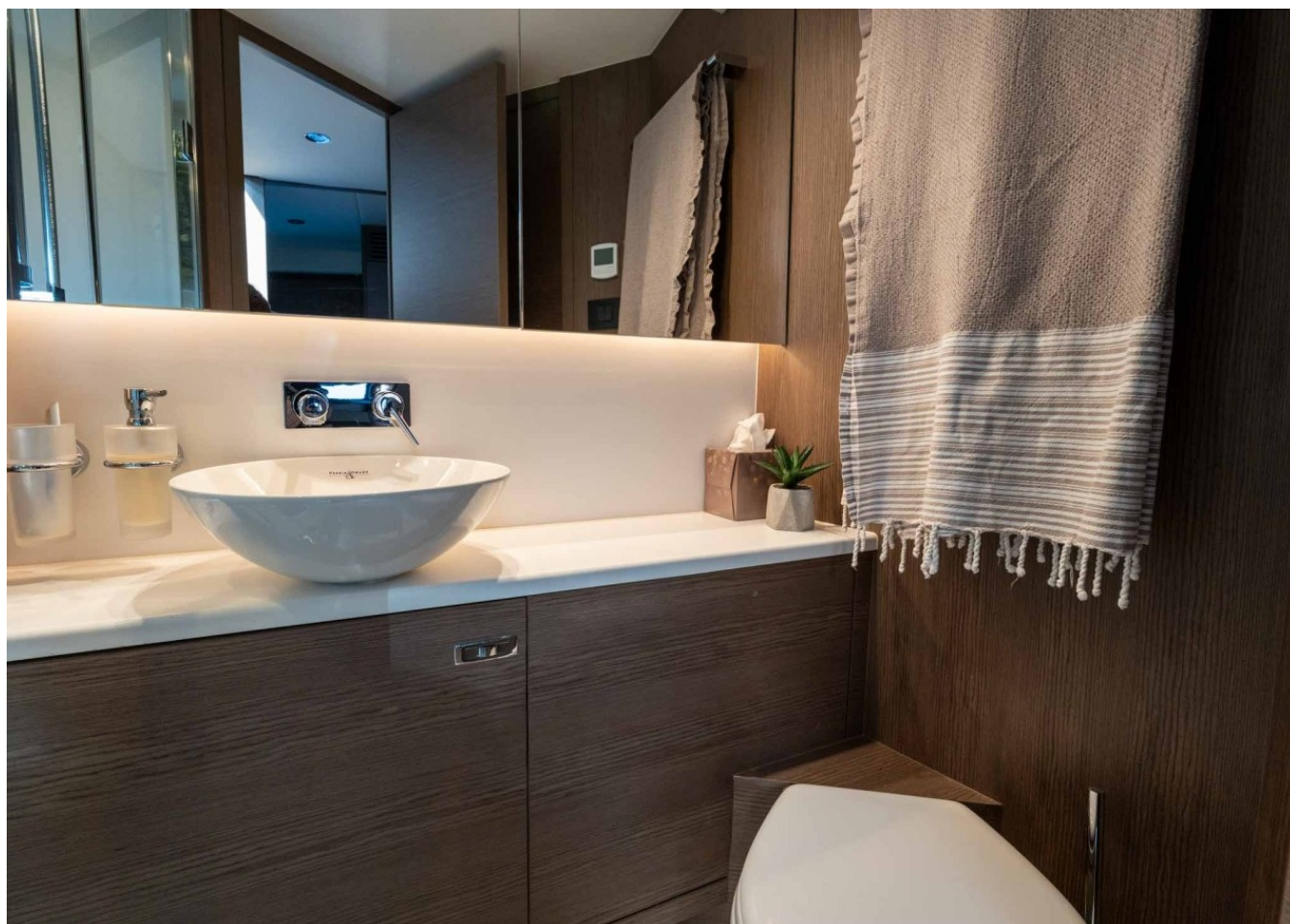








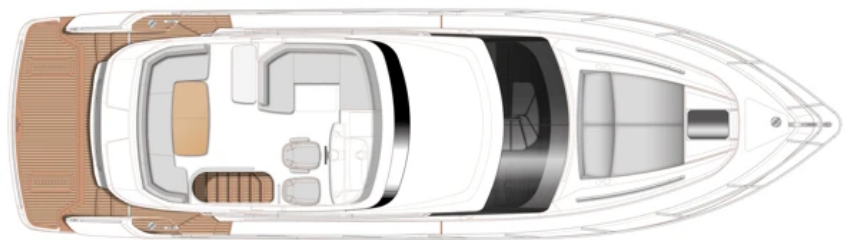




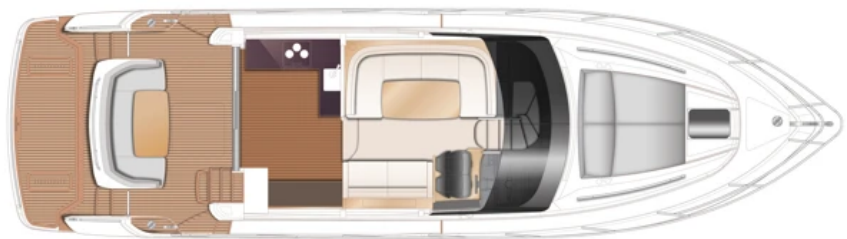




LAYOUTS



FLYBRIDGE



MAIN DECK



LOWER DECK

EQUIPMENT

ALLURE COLLECTION II (Without Hard Top)

Quilting detail with contrast piping and panelling to main deck helm seats

Quilting detail with contrast piping and panelling to flybridge helm seats

Lower helm seat to be in Cirrus leather with Gunmetal contrast + Allure stitching

Teak step nosings upgrade (includes transom, flybridge, foredeck – steps to side deck when side deck option is selected)

Flybridge console finished in metallic Oyster Grey

Foredeck sunbed cushions and adjustable headrests

Exterior upholstery in Met Ice with Macadamia contrast

GALLEY

Galley worktop to be Koko White

BATHROOMS

Bathroom countertops to be Koko White

Heating in one WC floor (not in shower)

Bathroom floors are Koko White Solid Surface (satin finish)

COLOUR SCHEME

Silver Oak satin wood interior

Small rectangular quilting on bed covers

Colour schemes from the Quartz VIII range of fabrics as standard

DECK HARDWARE

Transom platform to have electro-hydraulic raise/lower facility (450 kg SWL – max tender weight 300 kg) with dinghy chock system

Teak laid flybridge deck

Side boarding gates to cockpit

Opening window to portside of saloon

Additional 10m of 10mm anchor chain (total 50m)

Chain meter counter for fore windlass at lower and upper helm

Stainless steel anchor in place of standard (20kg)

Scandinavian pulpit, lowered opening in bow

Teak to side decks and foredeck

GENERATOR

ONAN 11kW / 50Hz generator (with hydroush exhaust system) in place of standard

ELECTRICAL

Continental 220v/240v sockets

Dimmer switches to saloon, galley, cockpit and all cabins

Dishwasher in galley (drawer type – 6 place setting)

Shorepower cable incl. adapter

Wine cooler (where icemaker is normally fitted)

Fit copex with mouse from engine room to lower helm position and lower helm to upper helm

Combination Washing machine/dryer (fitted below companionway stairs)

AUDIO VISUAL & COMMUNICATIONS

Deck saloon: Fusion Apollo MS-RA670 with DAB/Wifi and external USB, paired with Fusion speakers (2)

Flybridge: Fusion Apollo SRX-400 Radio/Wi-Fi/Bluetooth, paired with waterproof Fusion speakers (2). Includes 2 x Fusion ARX-70 wireless remotes

Deck Saloon TV Package: 43" LED TV on a power lift mechanism linked to audio system

Owner's Stateroom TV & Audio Package: 32" LED TV with a Fusion Apollo MS-RA770 with AM/FM/Bluetooth/DAB/WIFI and external USB, paired with Focal speakers (4) and subwoofer

Cockpit Audio Package: Fusion Apollo SRX-400 paired with Fusion waterproof speakers (2)

NAVIGATION

Autopilot with rate gyro compass

Volvo/Garmin 16" multifunction displays at lower and upper helm incorporating GPS/chartplotter, echo sounder, log trip as well as engine instrumentation and autopilot controls. Fuel gauge and helm position.

Second Garmin 16" colour multifunction display fitted at lower helm position

Second Garmin 16" colour multifunction display at the upper helm

Garmin XHD colour radar with 24', 4kW Radome

Garmin electronic chart BLUECHART G3 VEU721L NORTHERN EUROPE

Stern camera connected to plotter at lower and upper helm

Garmin 315 dual station VHF/DSC with intercom

AIRCONDITIONING

Reverse cycle air-conditioning / heating (56,000 Btu - tropical specification up to 40°C)

HEATING / DEMIST

Windscreen demist system using warm air heater powered from calorifier

HOLDING TANK / TOILETS

Electric discharge of holding tank

EXTERIOR UPHOLSTERY / CANVAS / COVERS

Exterior cushions to be Vogue Eucalyptus with Vogue STONE contrast

Black Cover over sun cushion

Upper helm seat to be in Met Ice with Met Macadamia contrast (contrary to the other outdoor cushions) + Allure stitching

Reticulated foam to foredeck sunpad cushion in place of standard

ACCESSORIES

Princess China (5 piece consisting of plate, side plate, bowl, cup & saucer) – 6 place setting

David Mellor “Paris” Cutlery (6 pieces) – 6 place set

CUSTOM SELECTIONS

Black Styling blade

Underwater lights transom

Different colour of blinds

Black Cover over cockpit table

Black Cover over cockpit sofa

Princess Glasses – 6 wine, 6 tumblers

Manual bimini with black canvas

Headboards in both cabins to be Gambie 43230111

Liferaft Ocean Safety Regatta 6 persons in a bag

2023 PRINCESS F50



Follow Princess Yachts Monaco

