

DE ALM DELFINO 72



HIGHLIGHTS

/ LIKE NEW CONDITION

/ FULLY EQUIPPED GALLEY

SPECIFICATIONS

Posizione	Montenegro
Anno	2013
Lunghezza	22.5 m
Larghezza	6.2 m
Pescaggio	1.75 m
Peso	80 tonnes
Capacità carburante	17900 l

Capacità acqua	1520 l
Cabine	4
Berths	6+2
Motorizzazione	IVECO 2 x 400
Max potenza	2 X 400 hp
Engine hours	500 m/h
Prezzo	1 650 000 € (ex VAT)

EQUIPMENT

1-meter extension, hull, superstructure and flybridge deck
Euro transom version with 1500mm swimming platform
Extra fuel tank about 5.600 l
2 stainless steel anchor boxes
Open stairs stainless steel from the aft deck to the flybridge with hatch and railings
2 gates in the bulwark at the aft deck
Fixed aluminium Bimini top painted in the colour of the ship
Hydraulic stabiliser system Naiad zero speed capability
Hydraulic bow and stern thruster installed with remote controls
4 x hydraulic capstans Hydrosta 900 stainless steel
2 x hydraulic winches
Generator Whisper Ultra 24kW with water separator
Hydraulic deck crane 600 kg on the flybridge
Watermaker 440 l/h
Besenzoni hydraulic gangway telescopic
Complete air system delta T 15 degrees down maximum (CLIMMA) with compressor module CWS, 10 fan coils
2 sets of battery chargers
Battery set 24V/1650 Amp
Mastervolt inverter 24/10
Plasma TV 42 inches with hi-lo

Radio/CD players in salon, fly and aft deck with speakers
Satellite TV dish KVH Tracvision M7
Searchlight
Shore power connections
Underwater lighting around the swimming platform x 4
5 x Beo Sound 8 iPod docking systems
TV on owners and VIP cabins
Navigation system: Autopilot Raymarine P 70 R, 2 x Raymarine VHF ray 240, Intercom, windset, compass, Epirb, Radar, 3 x 17 inches displays at the main station + 2 x 15 inches at flybridge, AIS, GPS, camera night and daylights, 7 x camera CAM 100
Electric oven bosch
Wine cooler
Dishwasher
Floor heating
Big U-shaped sofa on the flybridge with fixed table
Kitchen equipment on the flybridge with sink, refrigerator, ice maker, big grill
Shower on the swimming platform
Teak on the main deck, flybridge, swimming platform
Minibar at the aft deck with fridge
The teak table on flybridge

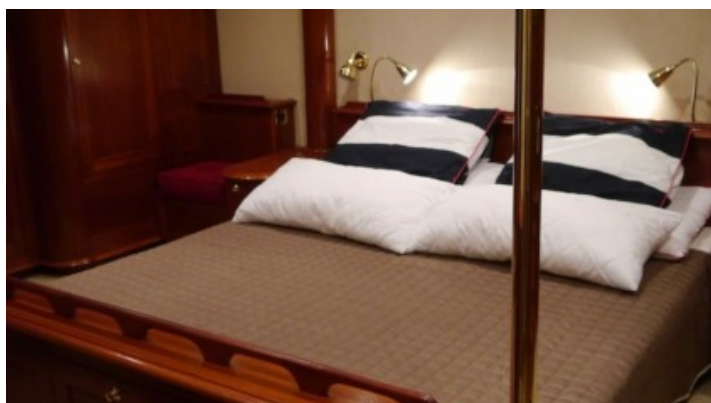
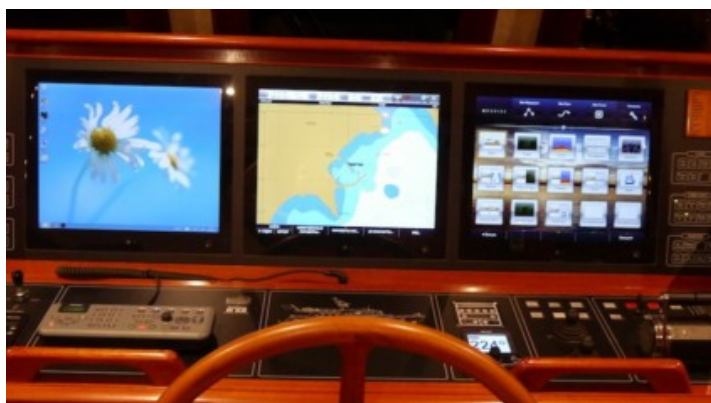
MOTORIZZAZIONE

IVECO 2 x 400

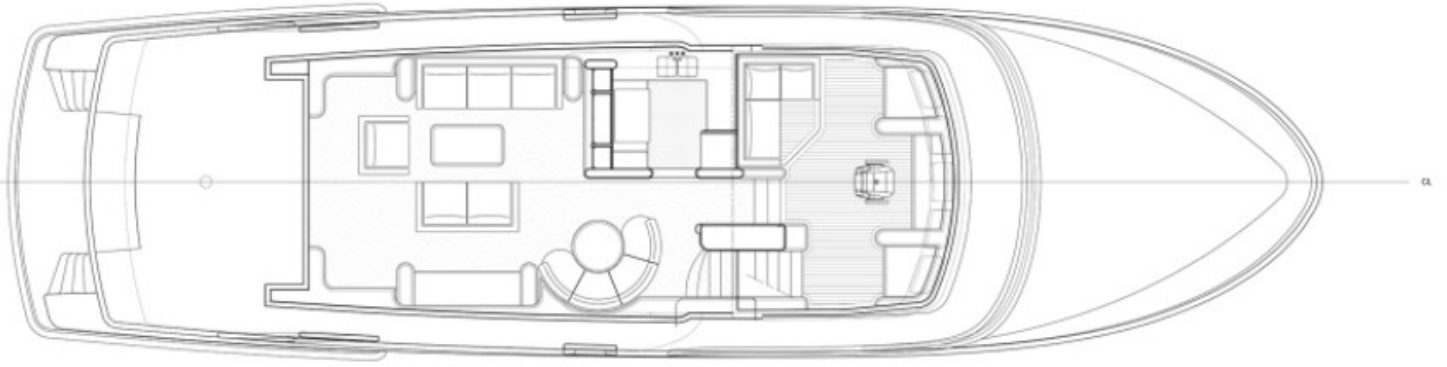
EXTERIOR



INTERIOR



LAYOUTS



MAIN DECK



LOWER DECK
