

2011 GENESIS



TURN KEY CONDITION

HIGHLIGHTS

- / ZERO SPEED STABILIZERS
- / MOST VOLUMINOUS YACHT IN HER CLASS
- / FULL BEAM MASTER AND VIP CABINS
- / CARBON POLES WITH AWNINGS COVERING ALL SUN AREAS
- / VAT PAID
- / NEW ENTERTAINMENT SYSTEM 2022
- / NEW PAINT 2021
- / MTU QL3 2021
- / 10 YRS KAMEWA SERVICE
- / PRIVATE USE ONLY
- / BUILD TO COMMERCIAL CODE

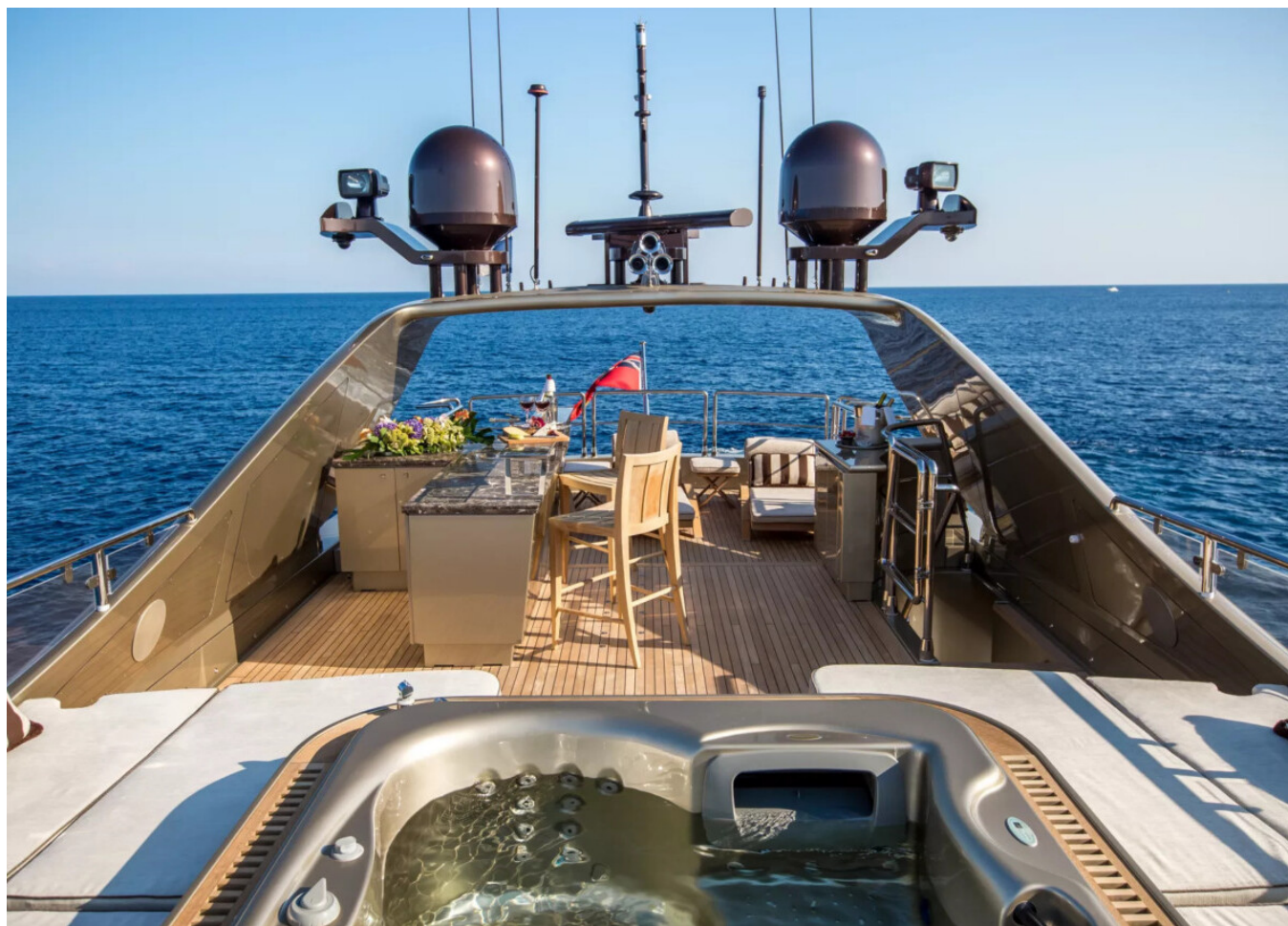
SPECIFICATIONS

Posizione	Sanremo, Italy	Cabine	4
Anno	2011	Motorizzazione	16V 2000 M93
Lunghezza	43.12 m	Max potenza	3 x 2400 hp
Larghezza	8.35 m	Velocita	33
Pescaggio	1.50 m	Prezzo	5 500 000 € (inc VAT)

The yacht is on the commission of Princess Yacht Monaco. The Company is not responsible for the accuracy of the information provided by the Yacht owner (images, specification, parameters, engine performance, legal, etc). The operating time of the engines is indicated at the time of preparation of the information and may change during further operation. The need for an inspection remains at the discretion of the Buyer. Exact parameters and characteristics can be specified in the contract of sale. Additional information is available upon request.















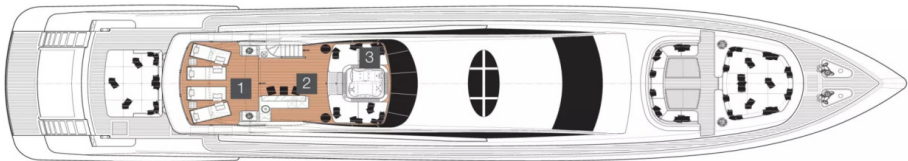








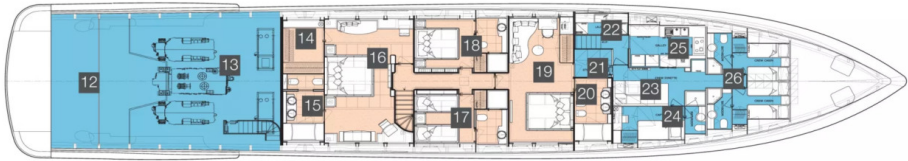
LAYOUTS



FLYBRIDGE



MAIN DECK



LOWER DECK

EQUIPMENT

OTHER MACHINERY

Tecma sanitation system

UV lamp Idromar + carbon filter

2 x watermaker Idromar 180ltrs/hours

1 x compressor diving equipment (2017)

ACCOMMODATION

Full-beam spacious master cabin, with large dressing room and en-suite bathroom with steam cabin

1 x double en-suite

1 x en-suite twin with Pullman

Full beam VIP cabin with en-suite bathroom and seating area

GALLEY

2 x Everlasting Fridge

2 x Vitrifrigo Frezer (New 2022)

1 x Vitrifrigo Freezer DW70BT (2017)

1 x Miele Profesionnal Dishwasher

1 x Miele Oven BP9010 (New 2020)

1 x Miele Microwave

1 x Miele Hood extraction

1 x Foodwaste In Sinkerator Evolution

CREW AREA

1 x Miele Dishwasher

1 x Liebherr Fridge/Freezer

1 x Vitrifrigo Fridge in tunnel

LAUNDRY

2 x Miele Profesionnal Dryer PT5136

2 x Miele Profesionnal Washing Machine W2859

COMMUNICATION EQUIPMENT

Alarm Monitoring System (AMS) : Schneider Touch Screen Display in Wheelhouse and Crew Quarter

Monitoring of Tank Levels, Bilge Levels, Diesel Generators, Propulsion Engines, Main Switchboard Voltage (220VAC + 380VAC), Shore Power Voltage, Battery Levels, Navigation Lights

Camera Monitoring System : Schneider IP Cameras 8 Channel HD Camera Recorder 15"

Led Display in Main Helm Bridge (new 2022)

Fixed DSC VHF

GSM

Magnetic Compass, Barometer, Hydrometer kit

SSB VSAT

KVH Satellite

NAVIGATION EQUIPMENT

1 x VHF Sailor RT5022

1 x Depth meter Simrad OP40

1 x AIS Furuno FA150

1 x Windstation Simrad AIS20

1 x Naxtex Receiver Furuno NX700

1 x Autopilot Simrad AP50

3 x Dell 19' Display

1 x Flir Camera Module

1 x GPS Furuno MX510

ENTERTAINMENT EQUIPMENT (All Entertainment system upgraded in March 2022)

Sonos system throughout

2 x Iphone 13 Max control for use in any area

WyreStorm 4K

8x8 video matrix

3 x Shared Sky Italia Satellite Decoder

1 x Yamaha Airplay streamerMAIN DECK

2 x Samsung NeoQLED 55"

7.1 sound system ICON Connect entertainment system with dedicated server for movies (Apple store, iTunes account)

1 x Apple TV 4K
MASTER CABIN

Samsung NeoQLED 50"

Apple TV 4K

VIP CABIN — 1 x Samsung NeoQLED 50"

PORT CABIN — 1 x Samsung Full HD 32"

START CABIN — 1 x Samsung Full HD 32"

AFT DECK — 1 x Samsung NeoQLED 43"

1 x Apple TV 4K

TENDERS & TOYS

Castoldi 5.3 m water jet tender

1 x Seadoo GX150

1 x Seadoo GTW300

1 x Seabobs F5 and 1 x F5S

DECK EQUIPMENT

Wet bar 1 x Samsung LED TV

Water Sprinkler system all around

1 x Icemaker Rarit	Maxwell 4000 & 4500 winches
1 x Vitrifrigo fridge C76LX	
FLYBRIDGE	
Wet bar	12 seating table
1 x Vitrifrigo fridge C76LX	Sun Bed
1 x Vitrifrigo Icemaker JacuzziBOW	Carbon pole awnings
1 x Fridge	2 x Maxwell 6000
4 x Speakers	Windlass 135m anchor chain
SAFETY & SECURITY EQUIPMENT	
2 x Servitec Zodiac liferaft on flydeck	Smoke Detection & Fire Alarm System in Engine Room
EPIRB + SART Emergency Beacons	Fire Blankets In Galley, Crew Lounge, Engine Room
NOVEC Fixed Fire Extinguishing System in Engine Room	Portable Fire Extinguishers In All Cabins
REFIT HISTORY	
MTU QL3 Service (2021)	AV/IT complete refit (2022)
Full paint (2021)	Generator overhaul (2023)
RINA 10 years class survey (2021)	KaMeWa 10 yrs service (2023)

2011 GENESIS

+33 6 40 61 88 46 

m.st.pierre@princessyachtsmonaco.com

Follow Princess Yachts Monaco

