

PRESTIGE 750



BROKERAGE

HIGHLIGHTS

/ STAINLESS STEEL ANCHORING KIT
/ ELECTRONIC PACK UPGRADE
/ AIS 650 TRANSCEIVER

/ TROPICAL AIR CONDITIONING 97000 BTU
/ FULL MIELE KITCHEN EQUIPMENT

SPECIFICATIONS

Posizione	France, Cannes	Capacità acqua	840 l
Anno	2014	Cabine	4
Lunghezza	22.58 m	Berths	8
Larghezza	5.46 m	Motorizzazione	2 x MAN V8
Pescaggio	1.59 m	Max potenza	1200 hp
Peso	41.4 tonnes	Engine hours	750 m/h
Capacità carburante	4400 l	Prezzo	1 750 000 € (ex VAT)

EQUIPMENT

2 x GYRO STABILIZERS

Bow and stern electric thrusters

3 XENTA JOYSTICKS

2x KOHLER generators 20 Kwa

GRP Hard top

Stainless steel anchoring kit

Electronic pack upgrade

AIS 650 Transceiver

Tropical air conditioning 97000 BTU

Full Miele kitchen equipment

Isotherm wine cellar

Watermaker 60 Lts/hr

Extended hydraulic bathing platform

Underwater lights

Satellite TV Antenna

Flat screen TV in all cabins and salon

Wetbar in cockpit including grill

Zodiac Yachtline 340 DL tender with Yamaha 25 hp out-board engine

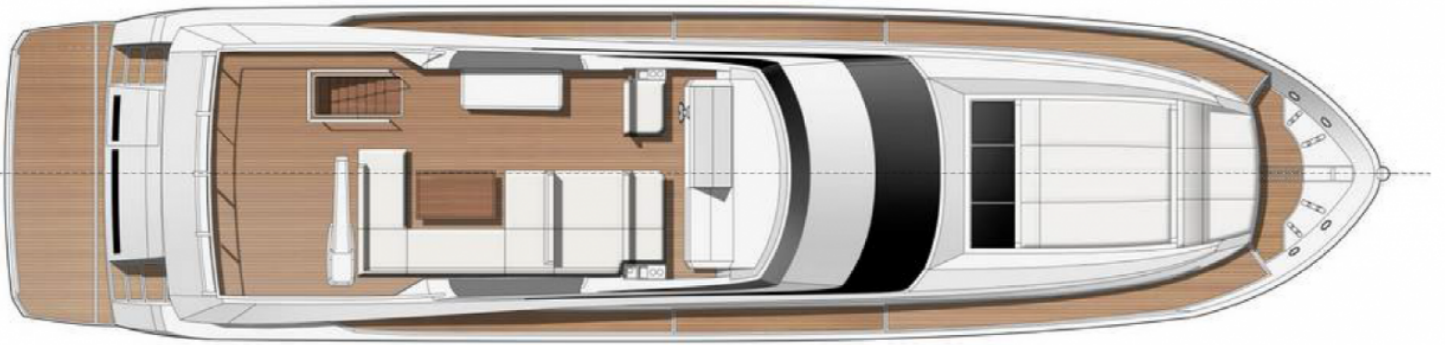
EXTERIOR



INTERIOR



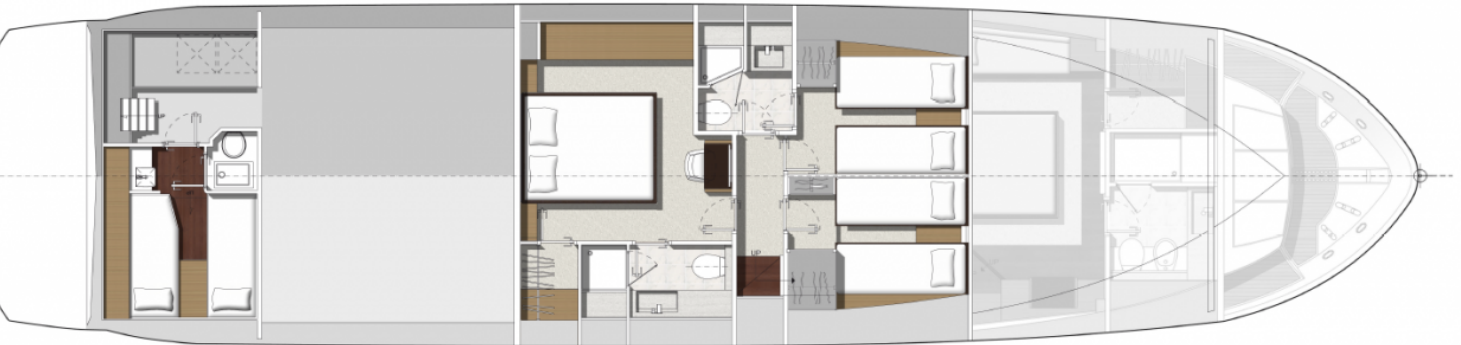
LAYOUTS



FLYBRIDGE



MAIN DECK



LOWER DECK
