

PRINCESS 30M



SPECIFICATIONS

| | | | |
|---------------------|--------------------------|----------------|------------------------|
| Posizione | United Kingdom, Plymouth | Capacità acqua | 1614 l |
| Lunghezza | 30.56 m | Motorizzazione | Twin MTU 16V 2000 M96L |
| Larghezza | 6.92 m | Max potenza | 2 x 2636 hp |
| Pescaggio | 2.05 m | Velocità | 23-25 † |
| Peso | 110 tonnes | Prezzo | Prezzo alla richiesta |
| Capacità carburante | 12228 l | | |

MOTORIZZAZIONE

Twin MTU 12V 2000 M96L (2 x 1,947 mhp)

Speed range: 20-22 knots[†]

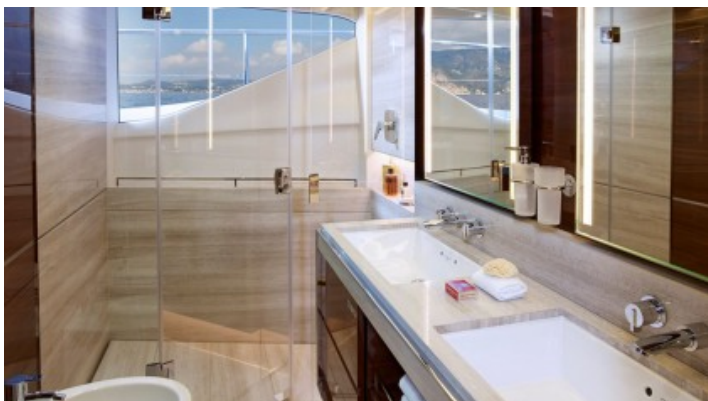
Twin MTU 16V 2000 M96L (2 x 2,636 mhp)

Speed range: 23-25 knots[†]

EXTERIOR

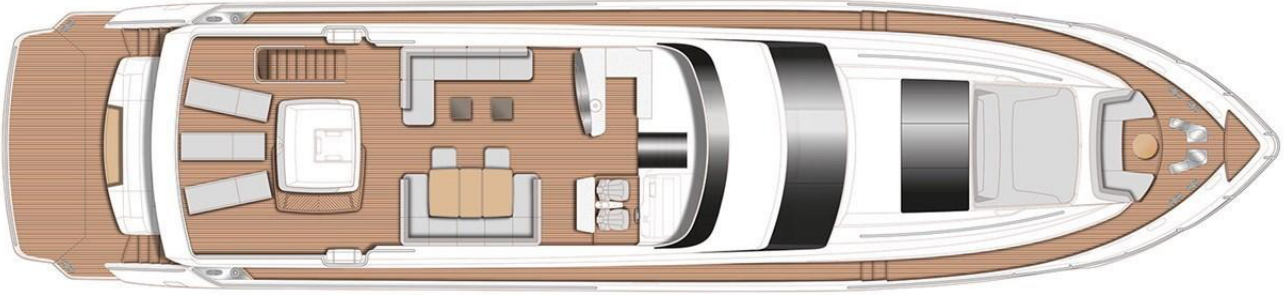


INTERIOR



Yachts on the commission of Princess Yacht Monaco. The Company is not responsible for the accuracy of the information provided by the Shipowner (images used, yacht specifications, parameters, engine performance, legal design issues). The operating time of the engines is indicated at the time of preparation of the information and may change during further operation. The need for an inspection remains at the discretion of the Buyer. Exact parameters and characteristics can be specified in the contract of sale. Additional information is available from the manager on request.

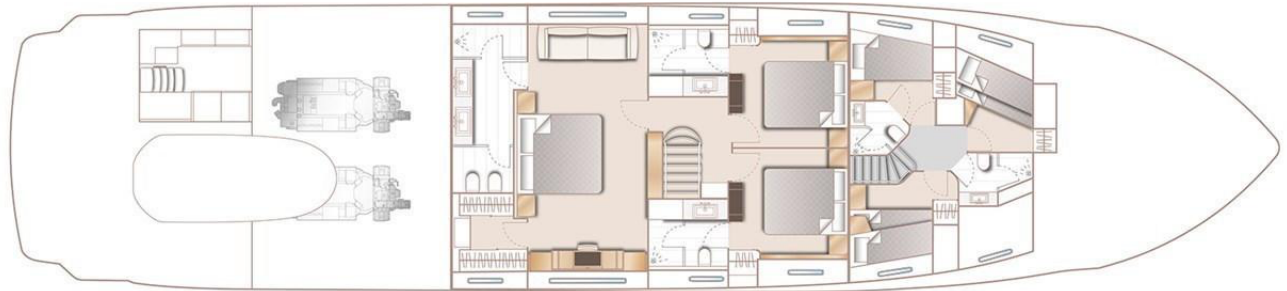
LAYOUTS



SUNDECK



MAIN DECK



LOWER DECK
