

PRINCESS F55 (040)



HIGHLIGHTS

- / READY FOR DELIVERY
- / LARGE FLYBRIDGE
- / INCREDIBLY ELEGANT LINES
- / STRONG SPECIFICATION

SPECIFICATIONS

Posizione	Monaco	Capacità acqua	608 l
Anno	2018	Cabine	3
Lunghezza	17.60 m	Berths	6
Larghezza	4.87 m	Motorizzazione	2 x MAN I6
Pescaggio	1.46 m	Max potenza	2 x 800 hp
Peso	24.6 tonnes	Engine hours	10 m/h
Capacità carburante	2750 l	Prezzo	1 256 800 € (ex VAT)



GALLERY







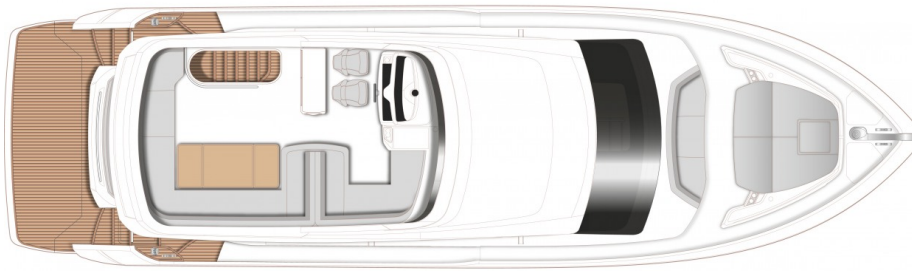


GALLERY

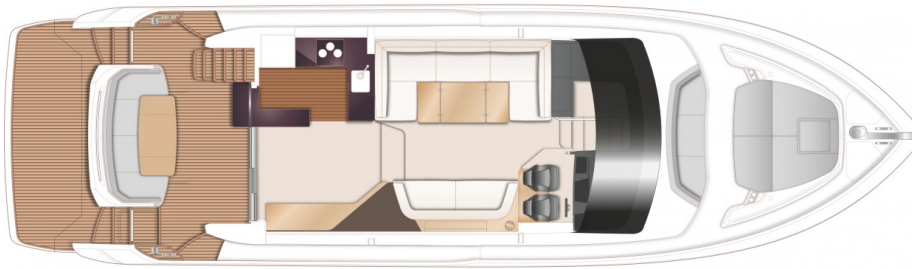




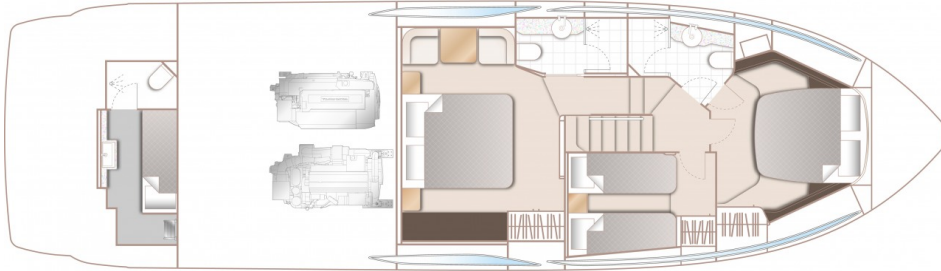
LAYOUTS



FLYBRIDGE



MAIN DECK



LOWER DECK

EQUIPMENT

Hull colour: White (with dark blue water line & black antifouling, hull & bathing platform fendering is white with stainless steel insert)

Teak laid side decks, foredeck and coachroof walkthrough, flybridge deck

Carrara White galley worktop

Bathroom floors to be in Carrara White in place of standard

Passerelle to be wired via the master switch in addition to it's own switch

International VHF

Continental 220V/240V sockets

Transom platform to have electro-hydraulic

Master stateroom -40' LED TV with Fusion MS-AV 755 Radio/DVD/MP3 player with Bluetooth facility

Garmin XHD colour radar with 24', 4Kw Radome (with display on standard 16' screen with allows separate or split displays with standard chartplotter and engine instrumentation)

Garmin remote control keypad (GRID) at the lower helm position

Garmin AIS 600 Class B transponder

Airconditioning/heating reverse cycle (78,000

raise/lower facility (450Kg SWL -maximum advised tender weight 300Kg) with stainless steel keyway plates and slider system for later fitting of tender	BTU) suitable for temperatures to 40°C (tropical) With controls in all cabins and outlets in all areas (including bathrooms) Recommended generator: 17.5kW
Electro-hydraulic telescopic paserelle (2.9m) with automatic hand rails	Aft cabin air conditioning Condensing unit 6,000BTU supplying 6,000BTU unit (with SMX control)
Foredeck freshwater anchor I deckwash system	Windscreen demist system using warm air heater powered from calorifier
Aft Cabin fit out (single berth with separate WC and shower)	Mosquito screens for all opening port lights
Starboard cabin to have double berth conversion with powered sliding mechanism on inboard berth	Electric overboard discharge system in addition to standard manual system
Additional 20m of 10mm anchor chain to give a total of 60 metres	Foredeck seating in Comfort Exterior II Met
Stern docking lights	Cockpit & Flybridge upholstery including helm seats - Comfort Exterior II Met
ONAN 17.5kW/50 Hz generator in place of standard. (the 17.5kW generator is recommended when gyro - stabilisers or aircon are specified)	Flybridge Grey Sunbrella Supreme
Dishwasher fitted in galley (slimline - 9 place setting)	Cockpit Grey Sunbrella Plus
Combination Washer/Dryer fitted below companionway stairs	Bimini Top- Charcoal Grey Sunbrella canvas
“Exterior Lighting Upgrade Package” Low level accent strip lights below flybridge wetbar and console, accent spots (3) on transom, additional 7 deck lights to side deck and foredeck area (total 13), pop up lanterns to flybridge forward dinette (2)	Bimini Top to be in two tone Sunbrella with linen underside
Stereo System: Deck Saloon -Harman Kardon 2.1 Blu-ray system (with Bluetooth connectivity) and KEF speakers	Bimini to have LED overhead dimmable lighting (switched from console)
Master stateroom -Harman Kardon 2.1 Blu-ray system with Bluetooth connectivity and KEF speakers (linked tooptional TV when ordered and in place of Fusion MS-UD650 Radio/iPod/MP3 player)	Interior design beureau service
Cockpit -Fusion NRX300 Radio with waterproof speakers linked to saloon Harmon Kardon unit	Non standard materials and fabrics in interior (Hermes)
	Additional charge for Scatter cushions and throws (Hermes)
	Sea commisiioning

Flybridge -Fusion MS-UD650 Radio/iPod/MP3
player with waterproof speakers linked to
saloon audio system

Interior: Walnut wood Satin finish (galley floor is walnut as standard)- Saloon folding leaf
dining table

PRINCESS F55 (040)

+377 6 40 62 55 44 

c.oddone@princessyachtsmonaco.com

Follow Princess Yachts Monaco

