

## PRINCESS F45 (2024)



STOCK

### HIGHLIGHTS

/ AVAILABLE IN STOCK

### SPECIFICATIONS

Posizione	After request	Cabine	2
Anno	2024	Berths	4
Lunghezza	14.15 m	Motorizzazione	Twin Volvo Penta IPS 650
Larghezza	4.25 m	Max potenza	2 x 480 hp
Pescaggio	1.09 m	Velocita	31
Peso	16 tonnes	Engine hours	Contact seller
Capacità carburante	1300 l	Prezzo	Prezzo alla richista
Capacità acqua	455 l		













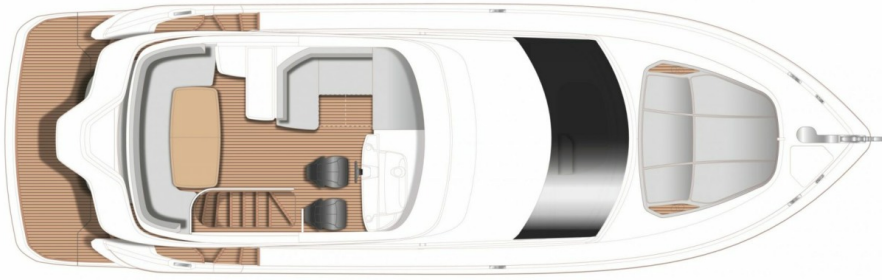






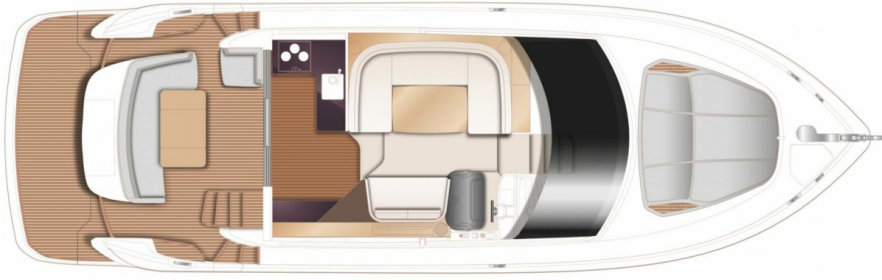
# LAYOUTS

---



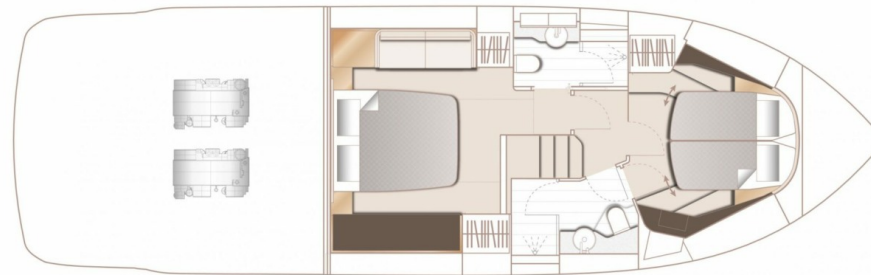
FLYBRIDGE

---



MAIN DECK

---



LOWER DECK

---



---

## PRINCESS F45 (2024)

+33 6 40 61 88 46 

m.st.pierre@princessyachtsmonaco.com

---

Follow Princess Yachts Monaco

