

PRINCESS F50 (2024)



STOCK

HIGHLIGHTS

/ BRAND NEW YACHT
AVAILABLE IN STOCK

SPECIFICATIONS

Posizione	After request	Cabine	3
Anno	2024	Berths	6
Lunghezza	15.65 m	Motorizzazione	Twin Volvo D8 IPS 800
Larghezza	4.30 m	Max potenza	2 x 600 hp
Pescaggio	1.39 m	Velocita	34
Peso	22 tonnes	Engine hours	Contact seller
Capacità carburante	1850 l	Prezzo	Prezzo alla richista
Capacità acqua	420 l		

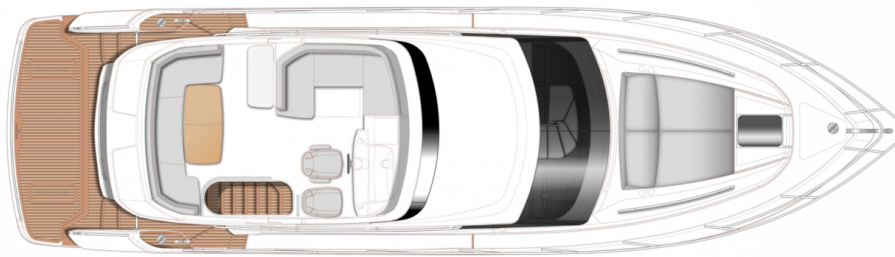




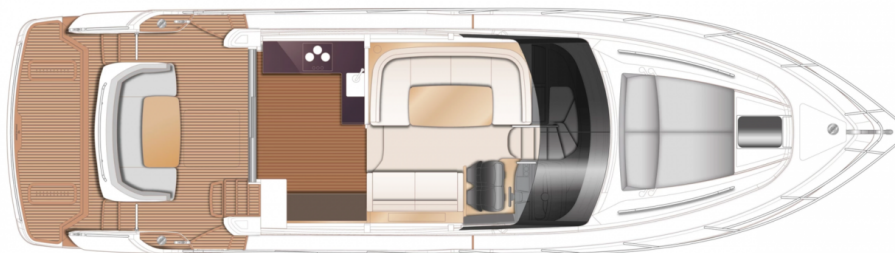




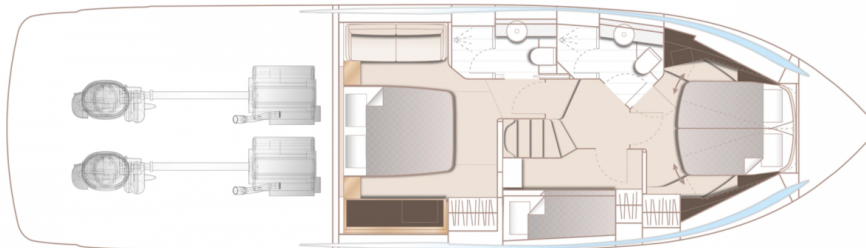
LAYOUTS



FLYBRIDGE



MAIN DECK



LOWER DECK



PRINCESS F50 (2024)

Follow Princess Yachts Monaco

