

PRINCESS F50 (2024)



BROKERAGE

HIGHLIGHTS

/ BRAND NEW YACHT AVAILABLE IN STOCK

SPECIFICATIONS

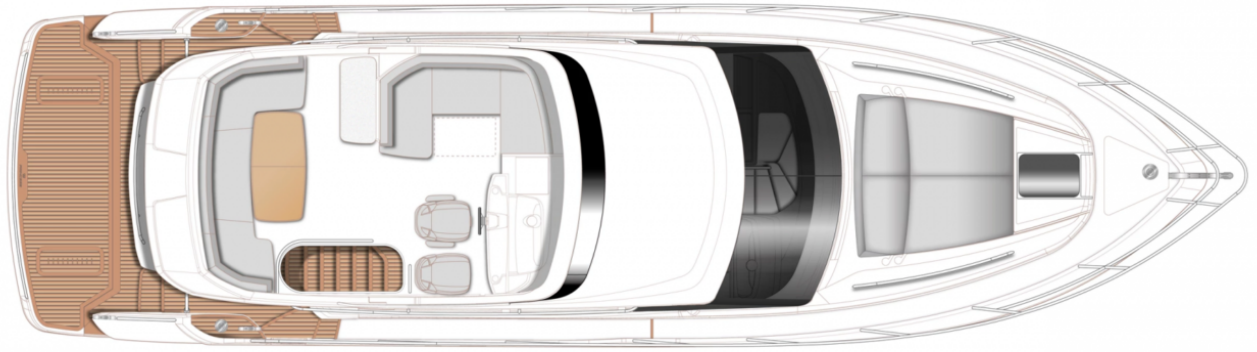
Posizione	Monaco, Monaco	Capacità acqua	420 l
Anno	2024	Cabine	3
Lunghezza	15.65 m	Berths	6
Larghezza	4.30 m	Motorizzazione	Twin Volvo D8 IPS 800
Pescaggio	1.39 m	Max potenza	2 x 600 hp
Peso	22 tonnes	Velocità	34 †
Capacità carburante	1850 l	Prezzo	Prezzo alla richiesta

EXTERIOR

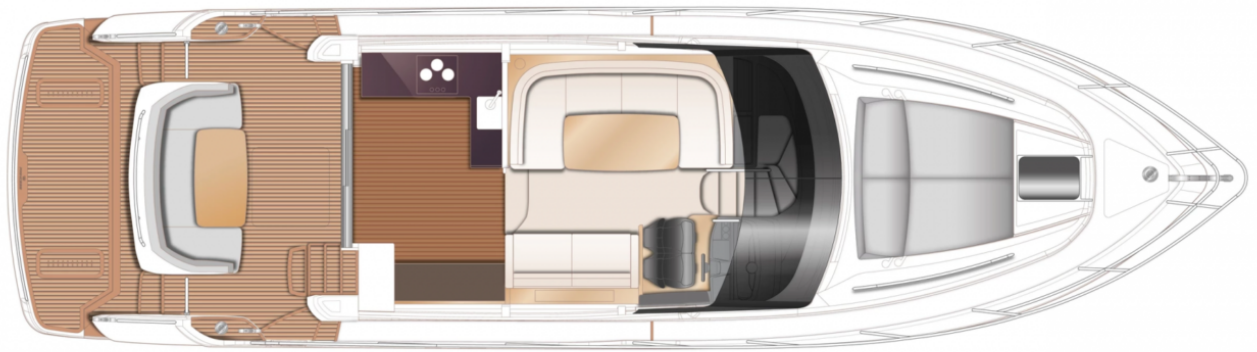




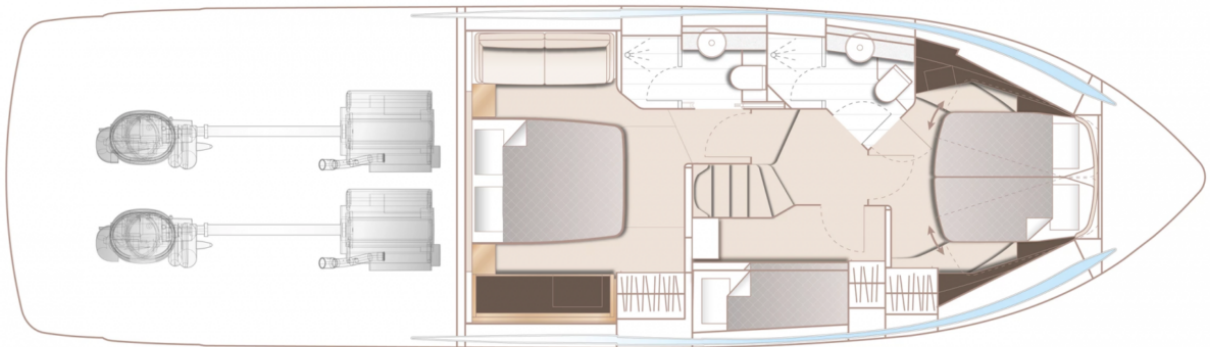
LAYOUTS



FLYBRIDGE



MAIN DECK



LOWER DECK
