

PRINCESS F50 (2026)



STOCK

SPECIFICATIONS

Posizione	After request	Cabine	3
Anno	2026	Berths	6
Lunghezza	15.65 m	Motorizzazione	Volvo IPS 800
Larghezza	4.30 m	Max potenza	(2 x 600) hp
Pescaggio	1.39 m	Velocità	34
Peso	22 tonnes	Engine hours	Contact seller
Capacità carburante	1850 l	Prezzo	1 435 900 £ (ex VAT)
Capacità acqua	420 l		

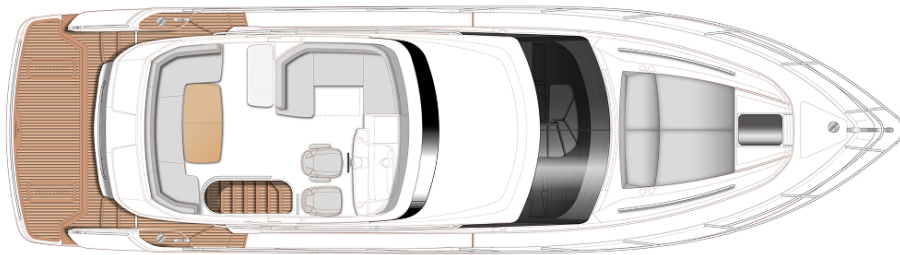




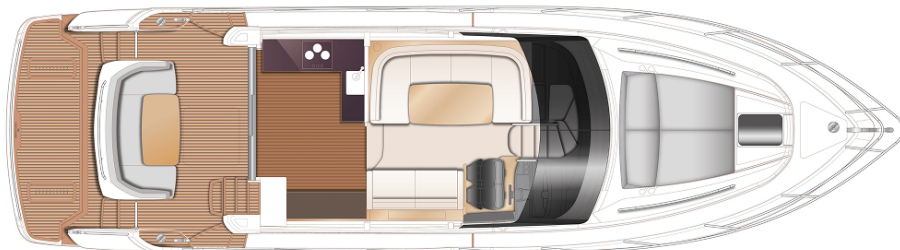




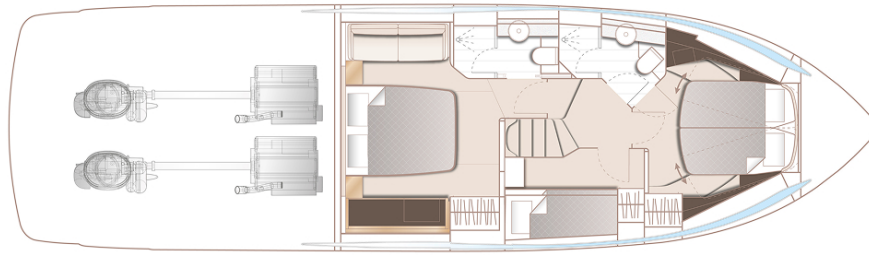
LAYOUTS



FLYBRIDGE



MAIN DECK



LOWER DECK

EQUIPMENT

"HULL COLOUR: White Gel Coat Finish (with dark grey water line, black antifouling, hull & bathing platform fendering is white with stainless steel insert)"

Bowthruster (120 Kgf) with dual station controls

Gyro Stabilisation – Quick X16

"Walnut interior wood satin finish (helm foot rest and galley floor are V groove walnut as standard)"

Flybridge wetbar incorporating sink, electric griddle/ BBQ and storage

Carrera White galley countertop

"Transom platform to have electro-hydraulic raise/lower facility (450Kg

SWL – maximum advised tender weight 300Kg) with tender chock mounting system. Please note if both Gyro & Passerelle are fitted, the dinghy weight must not be greater than 125kg."

Electro-hydraulic Passerelle (2.9m letterbox type) – with teak

Passerelle to be wired via the master switch in addition to its own switch

Dimmer switch for deck saloon lighting

Additional 10m of 9.5mm anchor chain to give a total of 50 metres

Stainless steel Lewmar Epsilon anchor with swivel in place of standard (20kg)

Teak (6mm) with black caulking to side decks and foredeck

Teak (6mm) with black caulking to flybridge

Full height fridge/freezer (270ltr) fitted in

deck	galley in place of standard
“AGM 140 Ah batteries in place of standard (start, domestic and generator batteries) (not required when E-vision thrusters are selected as the battery upgrade is included in this package)”	“ONAN 11 kW / 50Hz generator (with hydrohush exhaust system) in place of standard (recommended if airconditioning and/or a gyro is fitted)”
Continental 220v/240v sockets	Underwater transom lights (4 Lumishore SMX54 Blue/White)
Foredeck freshwater anchor / deckwash system	Dishwasher in galley (drawer type – 6 place setting)
Icemaker fitted in fat saloon sideboard	“Deck Saloon Audio Package Fusion Apollo MS-RA770 with AM/FM/Bluetooth/DAB/WIFI in place of standard Fusion Apollo MSRA670 • Paired with Focal speakers (4) • Subwoofer”
“Deck Saloon TV Package •43” LED TV on a power lift mechanism linked to audio system”	“Owners Stateroom TV & Audio Package • 32” LED TV Fusion Apollo MS-RA770 with AM/FM/Bluetooth/DA B/WIFI “ Paired with Focal speakers (4)
“Cockpit Audio Package •Fusion Apollo SRX-400. Paired with Fusion waterproof speakers (2)”	“Garmin GMR 24 xHD3 colour radar with 24”, 4Kw Radome (with display on standard 16” screen which allows separate or split displays with standard chartplotter and engine instrumentation)”
Garmin AIS Class B transponder interfaced with chartplotters	European version plotter
International VHF	“Windscreen demist system using warm air heater powered from calorifier”
“Tempered water Air Conditioning/heating reverse cycle (63,000 BTU fan capacity with 48,000 BTU chiller capacity) suitable for temperatures to 40°C (tropical) with controls in all cabins and outlets in all areas (including bathrooms)”	Mosquito screens for all opening portholes
“Electric discharge In addition to the manual overboard and dockside discharge facilities an electric overboard discharge system is fitted. The electric overboard discharge system incorporates an electric valve with timer. When	“Cockpit and Flybridge upholstery including helm seats in Comfort Exterior IV MET/LINETEX/TANNERY Main Upholstery Colour: MET MACADAMIA”

the pump is turned on a time delay allows the electric valve to open before the pump starts. When the pump is switched off the valve closes. This means the through hull seacock does not need to be opened/closed every time the pump is switched on. The through hull seacock is itself fitted with a micro switch which prevents operation of the pump when it is closed. The electric valve has a manual override facility”

“Foredeck Sunbeds with integrated headrest-Comfort Exterior IV MET/LINETEX/TANNERY – no contrast. Main Colour: MET MACADAMIA”

“Fit reticulated foam to foredeck sunpad cushion in place of standard. Note only applicable with Foredeck sunbed cushion option”

“Fit reticulated foam to all standard exterior cockpit and flybridge seating in place of standard”

Exterior canvas – Grey canvas

Bimini top Grey Canvas

Additional Charge for Bimini to have LED dimmable overhead lightning

Princess China (6 [place setting)

Davide Mellor Paris Cutlery (6 place setting)

Fender Socks with Princess Logo (each) (Grey)

Additional charge for Milan X fabrics

“Helm seat upholstery leather upgrade with allure styling Helm seat in Putty leather with Arrow wood Novasuede contrast accents and added quilting.”

Carpet: MALDIVES TUSK

PRINCESS F50 (2026)

+33 6 40 61 88 46 

m.st.pierre@princessyachtsmonaco.com

Follow Princess Yachts Monaco

