

PRINCESS F55 (2024)



STOCK

HIGHLIGHTS

/ AVAILABLE IN STOCK

SPECIFICATIONS

Posizione	After request	Cabine	3
Anno	2024	Berths	6
Lunghezza	17.68 m	Motorizzazione	Twin Volvo D13-900
Larghezza	4.87 m	Max potenza	2 x 900 hp
Pescaggio	1.41 m	Velocità	34
Peso	30 tonnes	Engine hours	Contact seller
Capacità carburante	2750 l	Prezzo	Prezzo alla richista
Capacità acqua	620 l		

GALLERY

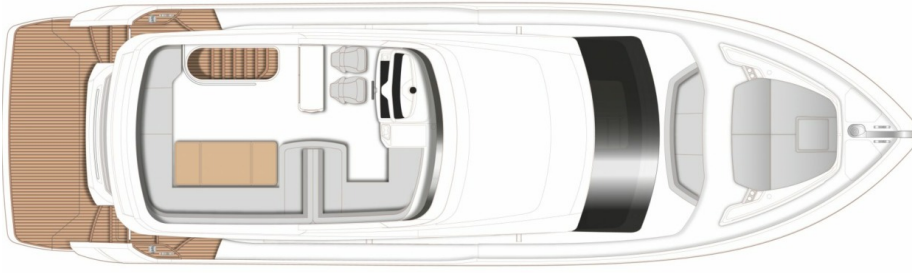




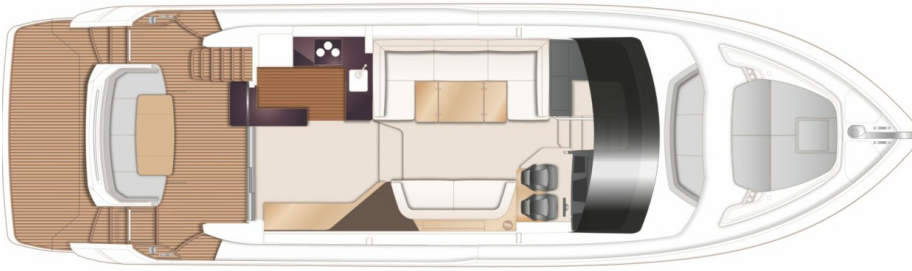




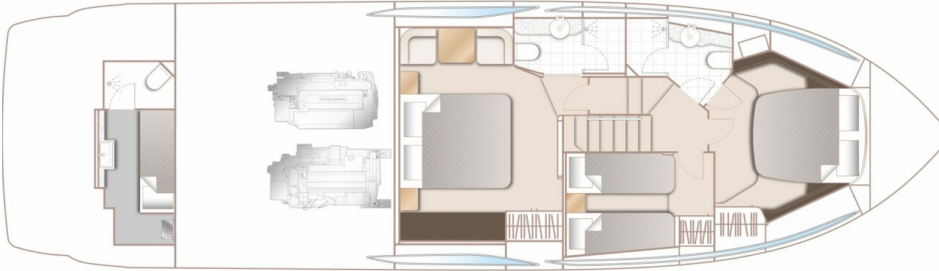
LAYOUTS



FLYBRIDGE



MAIN DECK



LOWER DECK



PRINCESS F55 (2024)

Follow Princess Yachts Monaco

