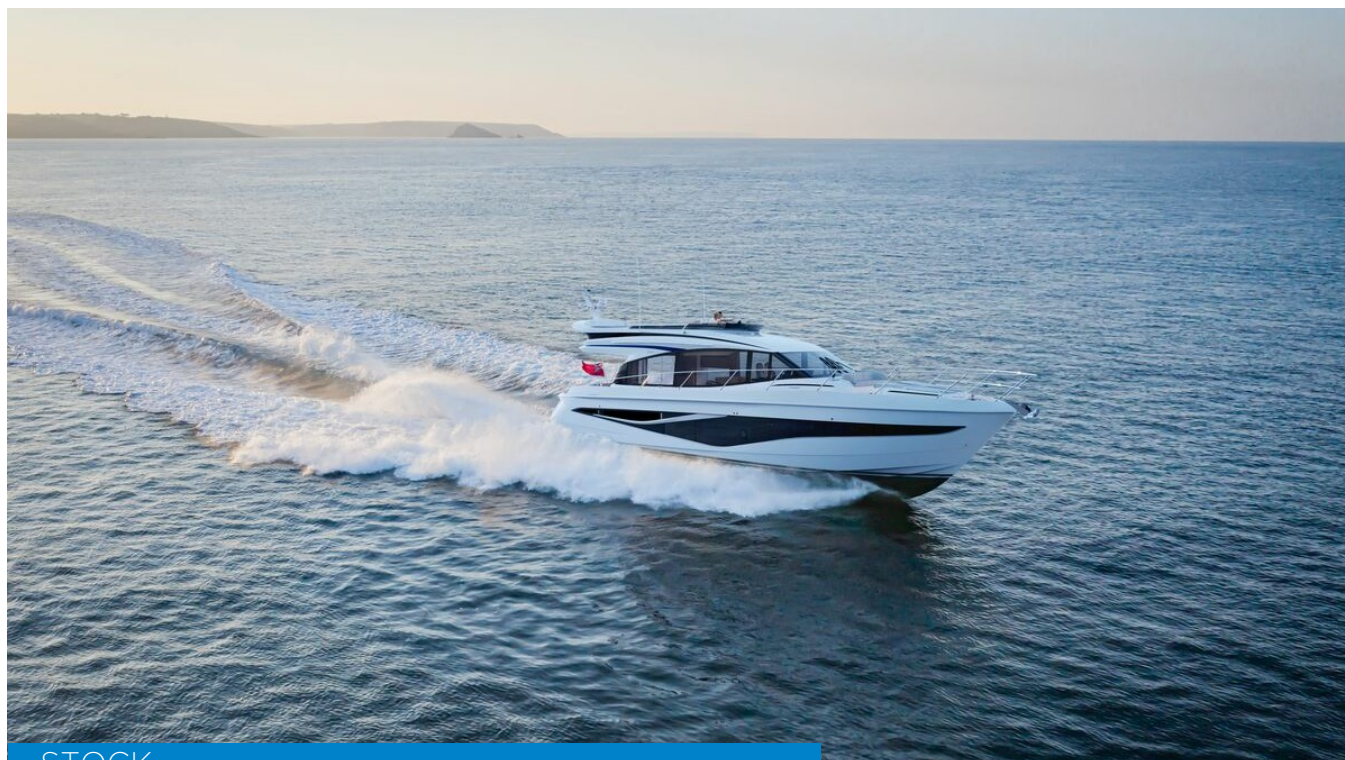


PRINCESS F58



STOCK

HIGHLIGHTS

/ ALL NEW

/ IN STOCK

SPECIFICATIONS

Posizione	After request	Cabine	3
Anno	2022	Berths	6
Lunghezza	18.2 m	Motorizzazione	MAN V8
Larghezza	4.90 m	Max potenza	2 x 1000 hp
Pescaggio	1.54 m	Velocità	31
Peso	78 tonnes	Engine hours	Contact seller
Capacità carburante	3300 l	Prezzo	Prezzo alla richista
Capacità acqua	630 l		







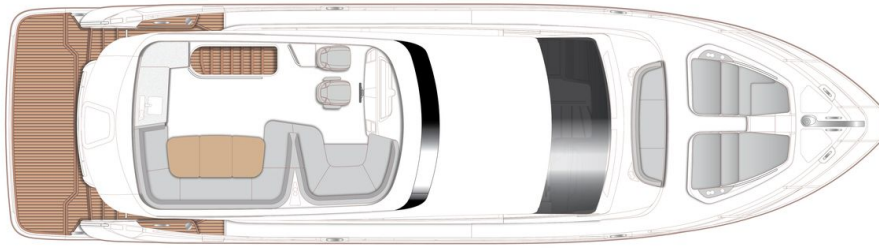




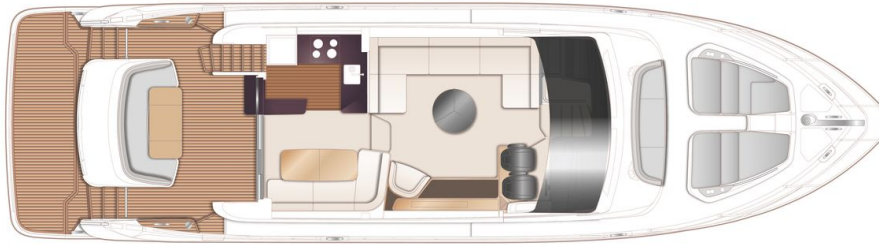




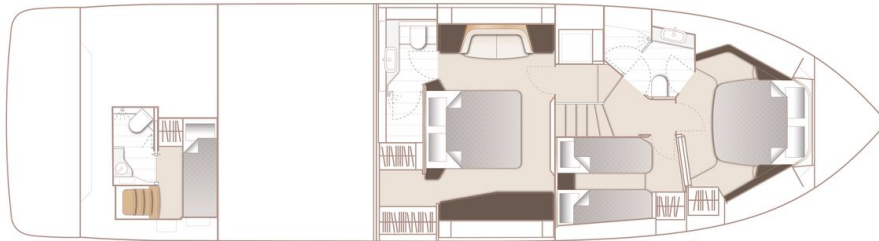
LAYOUTS



FLYBRIDGE



MAIN DECK



LOWER DECK

EQUIPMENT

DECK FITTINGS

Teak-laid transom platform, transom steps, cockpit deck, flybridge stairway and steps to side deck

Reversible electric anchor winch with foredeck and main helm controls

Stemhead roller with automatic anchor launch and retrieve

Self-stowing anchor system incorporating one 32kg galvanised Lewmar Delta anchor with 40m of 9.5mm galvanised anchor chain

Deck hatch access to chain locker - 2 lockers forward

Teak-laid transom platform, transom steps, cockpit deck, flybridge stairway and steps to side deck

Reversible electric anchor winch with foredeck and main helm controls

Stemhead roller with automatic anchor launch and retrieve

Self-stowing anchor system incorporating one 32kg galvanised Lewmar Delta anchor with 40m of 9.5mm galvanised anchor chain

Deck hatch access to chain locker - 2 lockers forward

Stainless steel fairleads, with chafing plates (1 pair)

Stainless steel bow, stern and spring cleats, with chafing plates (4 pairs)

Stainless steel pulpit and guard rails

PVC rubbing band with stainless steel insert

LED deck level lighting

Illuminated crown logo on transom

Full set of IMO navigation lights

Riding light

Searchlight with remote controls

Loudhailer (connected to VHF)

Twin electric horns

Ensign socket

Fuel and water fillers (one per side)

Black water holding tank dockside discharge connection

Foredeck escape hatch

Foredeck seating area with fender storage and drink holders (2)

Foredeck sunbathing area incorporating fixed twin sunpads with integrated storage and drink holders (4)

Foredeck sunpad covers

Portside fender storage locker

COCKPIT AND BATHING PLATFORM

Self-draining

Fixed bathing platform

Upholstered U-shaped seating

Stainless steel fairleads, with chafing plates (1 pair)

Stainless steel bow, stern and spring cleats, with chafing plates (4 pairs)

Stainless steel pulpit and guard rails

PVC rubbing band with stainless steel insert

LED deck level lighting

Illuminated crown logo on transom

Full set of IMO navigation lights

Riding light

Searchlight with remote controls

Loudhailer (connected to VHF)

Twin electric horns

Ensign socket

Fuel and water fillers (one per side)

Black water holding tank dockside discharge connection

Foredeck escape hatch

Foredeck seating area with fender storage and drink holders (2)

Foredeck sunbathing area incorporating fixed twin sunpads with integrated storage and drink holders (4)

Foredeck sunpad covers

Portside fender storage locker

Self-draining

Fixed bathing platform

Upholstered U-shaped seating

Folding teak dining table with cup holders (4)	Folding teak dining table with cup holders (4)
Stainless steel handrails	Stainless steel handrails
LED overhead and deck level lighting	LED overhead and deck level lighting
Integral stairway to flybridge with teak-laid step treads	Integral stairway to flybridge with teak-laid step treads
LED lighting to step faces	LED lighting to step faces
Life raft storage locker under flybridge stairs	Life raft storage locker under flybridge stairs
Rope storage	Rope storage
Lockable gas strut assisted hatch to lazarette/engine room	Lockable gas strut assisted hatch to lazarette/engine room
Locker containing remote fuel cocks, manual bilge pump with valve chest and manual controls for automatic fire extinguishers	Locker containing remote fuel cocks, manual bilge pump with valve chest and manual controls for automatic fire extinguishers
Transom top locker	Transom top locker
Twin transom gates leading to bathing platform	Twin transom gates leading to bathing platform
Hot and cold flatwash transom shower	Hot and cold flatwash transom shower
220/240v shore support inlet	220/240v shore support inlet
Cockpit cover	Cockpit cover

LOWER HELM

Twin leather upholstered manual seat with fore and aft adjustment for helmsman	Dual station instrument and controls console at lower helm
Instrument console with controls incorporating engine instruments and fuel gauges	
- 16" colour MFD incorporating GPS/chartplotter, log, echo-sounder	
Drink holders (3)	Bilge pump controls with visual pump running warnings
Electric drop window (starboard)	24v and 240v electrical control panel
Toughened glass screen (clear for night vision)	Riding light, helm and navigation light control switches
Windscreen wipers with freshwater windscreen wash	USB charging points (2) (USB-A and USB-C)

Glove box to portside dash	LED overhead lighting (24v) and night lighting
Exterior black mesh windscreen covers	Fitted carpet
<ul style="list-style-type: none"> - 9" MFD screen displaying engine instrumentation (including fuel levels and fuel flow) - Power-assisted electro-hydraulic steering - Adjustable steering wheel - High-speed magnetic compass - Electronic engine controls - Trim tab controls with indicators - Bow thruster control - Electric anchor winch remote control - Autopilot - Speed and distance log - Echo sounder with alarm - VHF with DSC R/T with intercom - Remote control searchlight - Horn button (to operate twin electric horns) - Audible and visual alarm engine warning system - Audible and visual alarm for bilge pumps - Engine room fire extinguisher warning system - Footrest 	
Dual station instrumentation and controls (see Lower Helm Position)	Small U-shaped seat (starboard), with conversion to sunpad
Power assisted electro-hydraulic steering with adjustable steering wheel	U-shaped upholstered seating area (starboard)
Wind deflector screens	Drink holders (8)
Twin manual helm seats with fore and aft adjustment for helmsman	Folding teak table with drink holders (4)
Audible and visual alarm for bilge pumps	Servery with sink, storage, electric barbecue and bin
Engine room fire extinguisher warning system	Fusion MS-SRX400 audio system, paired with Fusion Signature 7.7" waterproof speakers (2)
Clear view hatch to aft cockpit	LED deck level lighting
Access stairway to aft cockpit	USB-A charging points (2)
Stainless steel handrails	GRP radar arch
Stainless steel handrail around flybridge hatch	Twin matching whip aerials for VHF R/T and radio
Top loading cool box in navigators pedestal moulding	Covers to console and exterior furniture where appropriate

FLYBRIDGE

U-shaped sofa (port) with storage drawers below	U-shaped sofa (port) with storage drawers below
---	---

Coffee table	Coffee table
Electric drop window (port)	Electric drop window (port)
Crockery storage drawer	Crockery storage drawer
Sideboard unit with bottle and glass storage and refrigerator	Sideboard unit with bottle and glass storage and refrigerator
50" LED TV on rise and fall	50" LED TV on rise and fall
Fusion MS-RA770 audio system, paired with Focal 100 ICW6 speakers (2)	Fusion MS-RA770 audio system, paired with Focal 100 ICW6 speakers (2)
Panoramic tinted toughened glass windows port and starboard	Panoramic tinted toughened glass windows port and starboard
Manual Venetian blinds to all windows	Manual Venetian blinds to all windows
LED overhead and concealed lighting (24v)	LED overhead and concealed lighting (24v)
Access stairway to lower accommodation	Access stairway to lower accommodation
Fitted carpet	Fitted carpet

DECK SALOON

L-shape sofa to starboard	LED overhead and concealed (24v)
Folding dining table	Manual Venetian blinds to windows
Stainless steel framed sliding door to cockpit. Three panes with integrated hinging window aft of galley (one fixed pane, two sliding panes, one flip up window)	Manual blind to door
220/240v power outlets (1)	Fitted carpet
USB charging points (2) (USB-A and USB-C)	

DINING AREA

Galley counter top is Solid Surface in White (satin finish)	Waste bin
4-zone ceramic hob	Drawers and storage cupboards
Hob extractor fan	Corner galley storage bin (top loading) with work top lid
Twin top lockers	220/240v power outlets (4)

Combination microwave/convection oven with grill

Full height fridge/freezer (270l)

Sink is stainless steel with mixer tap

GALLEY

All cabins and bathrooms feature opening portholes

All cabins feature 220/240v power points and USB charging points

All bathrooms feature electric freshwater toilets and 240v shaver points OWNER'S STATEROOM

Large double bed with bedside tables and drawers below

Two-seater sofa to port, with cupboard storage

Walk-in wardrobe to starboard with shelves and mirror

Sideboard unit to starboard

Pull out mirror to vanity draw in sideboard unit

ACCOMODATION

Solid Surface vanity top and thermoformed sink

Mirror with medicine cabinet unit

Storage lockers

Shower compartment with automatic pump out

Extractor fan

EN-SUITE BATHROOM

Large double bed with drawers below

Half height mirror above sideliner, with storage

Manual Venetian blinds to windows

Timber-laid flooring (V-groove planked)

Fusion Apollo MS-RA670 audio system paired with Focal 100 ICW6 speakers (2)

Panoramic windows including opening portholes

Manual Venetian blinds to all windows

LED overhead and concealed lighting (24v)

Individual berth lights

220/240v outlets (2)

USB charging points (4) (2x USB-A and 2x USB-C)

Fitted carpet

Window with opening porthole

Manual Venetian blind to window

LED overhead and concealed lighting (24v)

Bathroom accessories (toilet roll holder, toilet brush and holder, soap dispenser, toothbrush tumbler and robe hooks)

Solid Surface flooring

Large double bed with drawers below

Half height mirror above sideliner, with storage

behind (port)

Wardrobe with shelves and mirror

Top lockers

Windows with opening portholes

Manual Venetian blind to all windows

Deck escape hatch

LED overhead and concealed lighting (24v)

Individual berth lights

220/240v outlets (2)

USB charging points (4) – two per side (2x USB-A and 2x USB-C)

Fitted carpet

FORWARD CABIN

Accessible from both the lobby/passage way and forward cabin

Solid Surface vanity top and thermoformed sink

Mirror with storage

Storage lockers

Shower compartment with automatic pump out

Extractor fan

EN-SUITE BATHROOM/DAY HEAD

Two single beds with drawers below

Bedside table

Wardrobe with shelves and mirror

Top lockers

Window with opening portholes

Manual Venetian blind to window

behind (port)

Wardrobe with shelves and mirror

Top lockers

Windows with opening portholes

Manual Venetian blind to all windows

Deck escape hatch

LED overhead and concealed lighting (24v)

Individual berth lights

220/240v outlets (2)

USB charging points (4) – two per side (2x USB-A and 2x USB-C)

Fitted carpet

Window with opening porthole

Manual Venetian blind to window

LED overhead and concealed lighting (24v)

Bathroom accessories (toilet roll holder, toilet brush and holder, soap dispenser, toothbrush tumbler and robe hooks)

Solid Surface flooring

LED overhead and concealed lighting (24v)

Individual berth lights

220/240v outlet (1)

USB charging points (2) (USB-A and USB-C)

Fitted carpet

STARBOARD GUEST CABIN

Storage for detergent and laundry equipment

Under-stair storage locker

Double height storage locker

LED overhead lighting (24v)

LOWER LOBBY / PASSAGEWAY AREA

Propeller shafts in Marinemet

5-bladed propellers in nickel aluminium bronze

Bow thruster 170kgF with dual-station controls

High speed balanced rudders

Power-assisted steering system

Trim tabs with indicators

Cathodic protection for sterngear

Sterngear, engines, fuel tank fillers, etc all electrically bonded

Forward and aft engine room bulkheads and engine room headlining to be integrally bonded including insulation with acoustaf foam layers

High volume air intakes

Engine room extractor fan with electronic time delay

Engine exhaust silencers and water-cooled exhausts

Engine beds integrally moulded with hull for strength and vibration absorption

Engines flexibly mounted

Automatic fire extinguisher with remote override control

Automatic and manual bilge pumps

Engine room lighting

Engine room access hatch and ladder

Electronic engine and gear shift controls

Engine exhaust silencers and water-cooled exhausts

Engine beds integrally moulded with hull for strength and vibration absorption

Engines flexibly mounted

Automatic fire extinguisher with remote override control

Automatic and manual bilge pumps

Engine room lighting

Engine room access hatch and ladder

Electronic engine and gear shift controls

Fresh water supply point in engine room

Dripless self-aligning shaft seals

Propeller shafts in Marinemet

5-bladed propellers in nickel aluminium bronze

Bow thruster 170kgF with dual-station controls

High speed balanced rudders

Power-assisted steering system

Trim tabs with indicators

Cathodic protection for sterngear

Sterngear, engines, fuel tank fillers, etc all electrically bonded

Forward and aft engine room bulkheads and engine room headlining to be integrally bonded including insulation with acoustaf foam layers

Fresh water supply point in engine room

Dripless self-aligning shaft seals

Propeller shafts in Marinemet

5-bladed propellers in nickel aluminium bronze

Bow thruster 170kgF with dual-station controls

High speed balanced rudders

Power-assisted steering system

Trim tabs with indicators

Cathodic protection for sterngear

Sterngear, engines, fuel tank fillers, etc all electrically bonded

Forward and aft engine room bulkheads and engine room headlining to be integrally bonded including insulation with acoustafoam layers

High volume air intakes

Engine room extractor fan with electronic time delay

POWER AND DRIVE SYSTEMS

4 x heavy duty batteries for engine starting

4 x heavy duty auxiliary batteries

Battery link facility with remote control at helm position

Both battery banks are charged using a voltage sensitive relay that parallels both battery banks when a charging source is present

60-amp 24v float battery charger

ELECTRICAL SYSTEMS

European specification: 11kW @ 50Hz diesel generator, in own sound shields, water cooled and with specially silenced exhaust systems and with remote operation from main control

High volume air intakes

Engine room extractor fan with electronic time delay

Engine exhaust silencers and water-cooled exhausts

Engine beds integrally moulded with hull for strength and vibration absorption

Engines flexibly mounted

Automatic fire extinguisher with remote override control

Automatic and manual bilge pumps

Engine room lighting

Engine room access hatch and ladder

Electronic engine and gear shift controls

Fresh water supply point in engine room

Dripless self-aligning shaft seals

Remote battery isolator control switches at main switch panel position

Circuit breakers on all circuits

12v voltage dropper/converters for certain navigation and radio circuits

Princess Connect telemetry and maintenance system

Earth leakage safety trip

Circuit breakers on all circuits

panel

USA specification: 11.5kW @ 60Hz diesel generator in own sound shields, water cooled and with specially silenced exhaust systems and with remote operation from main control panel

Automatic fire extinguisher situated in engine room

Shore power/generator change over control operated from main control panel

Polarity check system

24 Volt:

Twin fuel tanks in NS8 marine grade alloy with interconnection system 726 gal / 872 US gal / 3300 l capacity

Fuel fillers to port and starboard decks

High capacity duplex fuel filters/water traps with integral changeover valves

Water warning sensors connected to warning lights at main helm position

Remote fuel isolation controls in cockpit locker for main engines and generator

Fuel gauges displayed on MFDs at both helm consoles

220/240 Volt:

Water tanks giving a water capacity (excl. calorifier) of 139 gal / 166 US gal / 630 l capacity plus 73 litres hot water calorifier

Water heated by engines and 3kW immersion heater

Automatic water pump with filter

Main circuit breaker at main switch panel

Water level gauge

All cabins feature 220/240v power points and USB charging points

All bathrooms feature electric freshwater toilets and 240v shaver points

Twin fuel tanks in NS8 marine grade alloy with interconnection system 726 gal / 872 US gal / 3300 l capacity

Fuel fillers to port and starboard decks

High capacity duplex fuel filters/water traps with integral changeover valves

Water warning sensors connected to warning lights at main helm position

Remote fuel isolation controls in cockpit locker for main engines and generator

Fuel gauges displayed on MFDs at both helm consoles

Water tanks giving a water capacity (excl. calorifier) of 139 gal / 166 US gal / 630 l capacity plus 73 litres hot water calorifier

Water heated by engines and 3kW immersion heater

Automatic water pump with filter

Main circuit breaker at main switch panel

Water level gauge

Deck filler

Electric quiet flush toilet system linked to 69 gal / 83 US gal / 315 l black water tank, content gauge and manual overboard discharge, with macerator backup system as well as dockside discharge system

Deck filler

Electric quiet flush toilet system linked to 69 gal / 83 US gal / 315 l black water tank, content gauge and manual overboard discharge, with macerator backup system as well as dockside discharge system

FUEL SYSTEM

Automatic/manual override electric bilge pumps in engine room (2), lazarette (2) and forward accommodation (6 in total)

Electric bilge pumps have controls and warning lights at main helm with audible alarm at flybridge helm

High capacity manual bilge system with valve system and suction points in the same areas

WATER SYSTEM

Automatic engine room fire extinguisher system (with manual override) and warning system at main and flybridge helm positions providing automatic shutdown of engines, generators and ventilation fans

Automatic fire extinguisher system under main helm

Automatic fire extinguisher system under main helm

Hand operated fire extinguishers (5) in owner's stateroom, forward and starboard guest cabin, galley and main helm position

Hand operated fire extinguishers (5) in owner's stateroom, forward and starboard guest cabin, galley and main helm position Automatic engine room fire extinguisher system (with manual override) and warning system at main and flybridge helm positions providing automatic shutdown of engines, generators and ventilation fans

Additional extinguisher fitted when optional crew cabin is specified

BILGE PUMPS

Ensign staff

Anchor winch back up handle

Fenders (6)

First Aid kit

Mooring warps (4)

Bed covers supplied to all cabins (except optional crew cabin)

Tool kit

Owner's manual and engine manual

Boat hook

Ship's document case

EXTINGUISHERS / FIRE CONTROL SYSTEMS

Teak-laid transom platform, transom steps, cockpit deck, flybridge stairway and steps to side deck

Timber-laid flooring (V-groove planked) to galley

Furniture in Rovere oak satin finish as standard (Silver oak satin finish, Ash satin finish or Walnut in satin or gloss finish available as an option)

Solid Surface floors in all bathroom suites in guest accommodation

Solid Surface wash basin vanity tops in all bathroom suites in guest accommodation

Galley counter top in Solid Surface

Exterior upholstery in white vinyl as standard, with optional upgrade to Comfort Exterior available

Choice of high-quality carpets and upholstery fabrics from extensive range

Manual blinds to all windows and portholes (except crew porthole)

Optional crew cabin to have furniture in specified boat timber with fitted carpet. Crew bathrooms have Solid Surface vanity tops and GRP floors with tracking

Teak-laid transom platform, transom steps, cockpit deck, flybridge stairway and steps to side deck

Timber-laid flooring (V-groove planked) to galley

Furniture in Rovere oak satin finish as standard (Silver oak satin finish, Ash satin finish or Walnut in satin or gloss finish available as an option)

Solid Surface floors in all bathroom suites in guest accommodation

Solid Surface wash basin vanity tops in all bathroom suites in guest accommodation

Galley counter top in Solid Surface

Exterior upholstery in white vinyl as standard, with optional upgrade to Comfort Exterior available

Choice of high-quality carpets and upholstery fabrics from extensive range

Manual blinds to all windows and portholes (except crew porthole)

Optional crew cabin to have furniture in specified boat timber with fitted carpet. Crew bathrooms have Solid Surface vanity tops and GRP floors with tracking

OTHER STANDARD EQUIPMENT

FINISHES

PRINCESS F58

+33 6 40 61 88 46 

m.st.pierre@princessyachtsmonaco.com

Follow Princess Yachts Monaco

