

2021 PRINCESS S78



NEW CONDITION

HIGHLIGHTS

- / MCA COMPLIANT / ONLY 190 ENGINE HOURS / SEAKEEPER INSTALLED
- / WATERMAKER / 2 GENERATORS / HYDRAULIC GANGWAY
- / ELECTRO-HYDRAULIC
TRANSOM PLATFORM / TV/AV EQUIPPED / WIFI + 4G INTERNET
- / CCTV / WILLIAMS 435 TENDER

SPECIFICATIONS

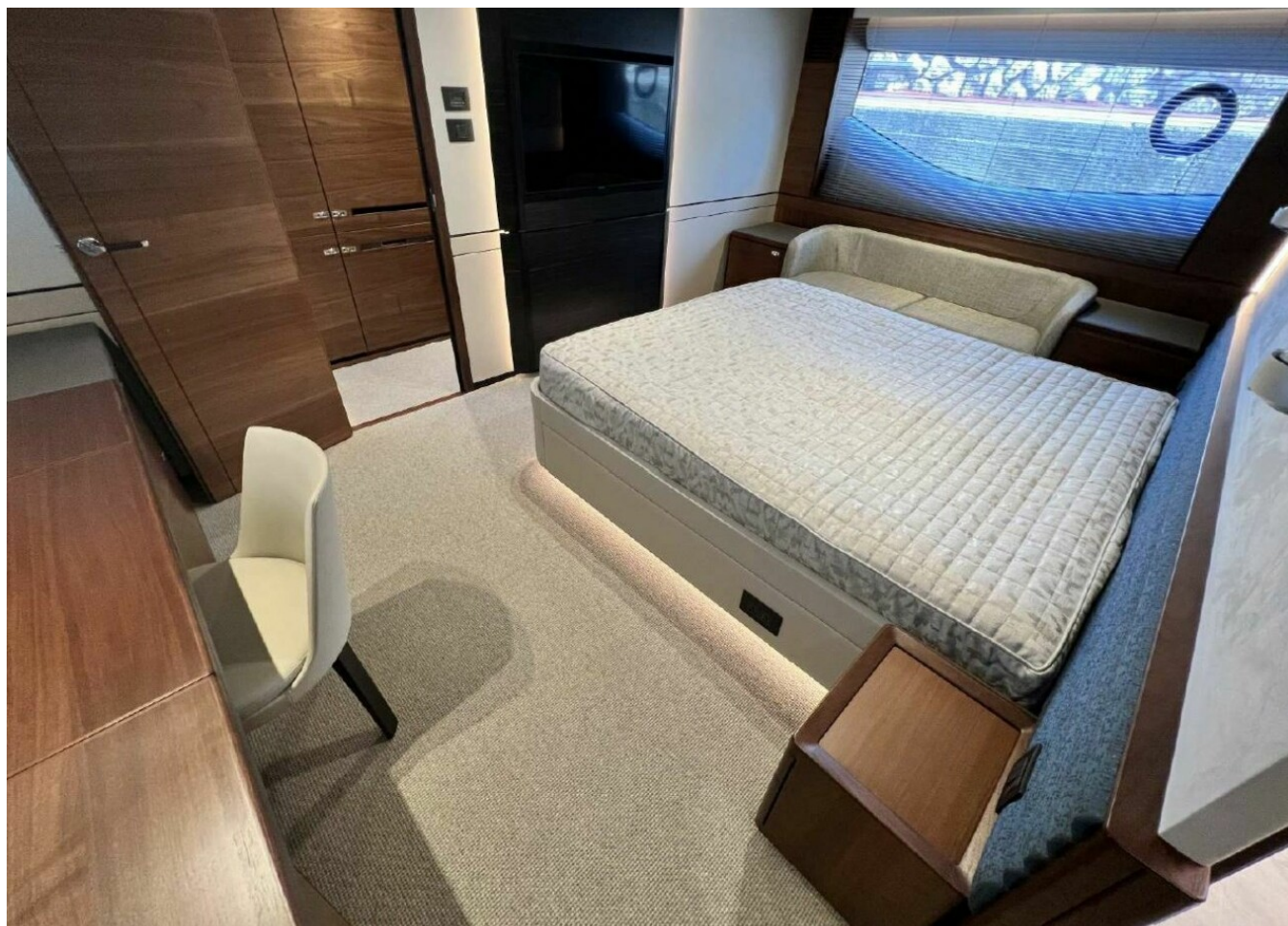
Posizione	Italy	Cabine	4 + 1
Anno	2021	Berths	8 + 2
Lunghezza	24.66 m	Motorizzazione	2 Twin MAN V12
Larghezza	5.76 m	Max potenza	2 x 1900 hp hp
Pescaggio	1.77 m	Velocita	37-39
Peso	53.7 tonnes	Engine hours	190 m/h
Capacità carburante	6000 l	Prezzo	3 450 000 € (ex VAT)
Capacità acqua	1350 l		

The yacht is on the commission of Princess Yacht Monaco. The Company is not responsible for the accuracy of the information provided by the Yacht owner (images, specification, parameters, engine performance, legal, etc). The operating time of the engines is indicated at the time of preparation of the information and may change during further operation. The need for an inspection remains at the discretion of the Buyer. Exact parameters and characteristics can be specified in the contract of sale. Additional information is available upon request.













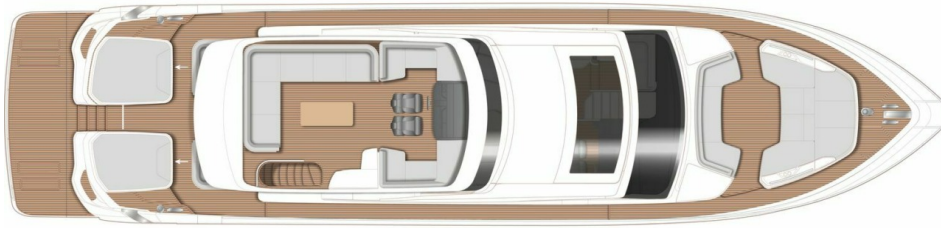




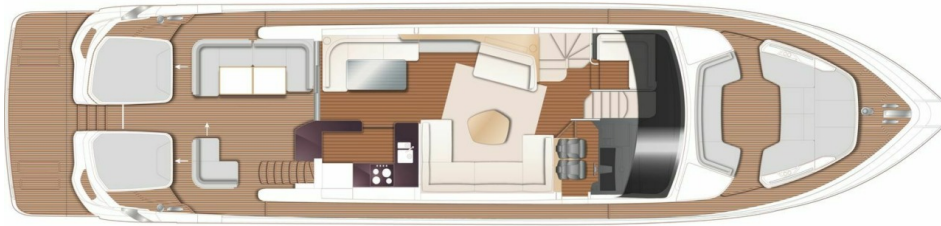




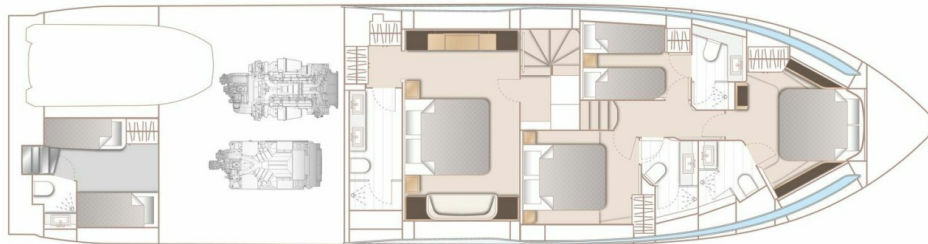
LAYOUTS



FLYBRIDGE



MAIN DECK



LOWER DECK

EQUIPMENT

- Gyro stabilizer (Seakeeper 16)
- Joystick Control (XENTAL dual station) operating with both engines and thruster
- Craft Built to MCA(Small commercial Vessel Regulation cat. 2)+ Safety equipment
- Interiors walnut wood satin
- Combination toilet/bidet in Master Stateroom
- Up/down electro hydraulic transom with 550kg fitted as standard with tender launch system fitted in the garage
- Side entry gates to aft port & starboard side decks in addition to standard gangway
- Electric sun awning to aft end of cockpit
- Electric sliding roof over forward saloon area
- Stainless steel anchor in place of standard (50Kg) + 140mt chain
- Third station controls in cockpit (engine, thruster and stop emergency engine controls)
- Ketal Zig Zag coffee table
- ONAN 27kW/50Hz generator fitted in place of standard
- Additional 22.5kW/50Hz generator
- Continental 220v/240 sockets
- Underwater transom lights (4 Lumishore SMX53 White)
- Underwater lighting to aft hull sides (4 Lumishore SMX53 White)(2 per side)
- Fresh water maker (190 litres/hour) complete with remote instrumentation
- Lava Brick BBQ in place of standard
- Heated towel rail in bathroom
- Icemaker fitted in sportbridge wetbar
- Underfloor heating in bathrooms
- Wine cooler fitted above standard washer/dryer in owner's lobby
- Icemaker fitted in sportbridge wetbar
- Sub zero drawer fridges fitted in galley
- 110 Lt fridge in crew mess unit
- Combination Microwave/grill fitted in crew mess

- Optional table lamp in Master Stateroom positioned at forward end of port vanity unit
- Deck Saloon – 55" UHD LED TV on power lift Naim Uniti Atom audio system with Bluetooth, multi-zone streaming capability and dedicated app. Blu-ray UHD CD/DVD player. Paired with 2 Focal speakers and subwoofer
- Owners stateroom – 40" UHD LED TV, Naim Uniti Atom audio system with Bluetooth, multi-zone streaming capability and dedicated app. Blu-ray UHD CD/DVD player, Paired with 2 Focal speakers and subwoofer
- Sportbridge – Naim Uniti Atom audio system with Bluetooth, multi-zone streaming capability and dedicated app. Paired with 2 Bowers & Wilkins waterproof speakers (no HDMI connectivity)
- Cockpit seating area – Naim Uniti Atom audio system with Bluetooth, multi-zone streaming capability and dedicated app. Paired with 2 Bowers & Wilkins waterproof speakers (no HDMI connectivity)
- System includes onboard Ethernet network with 4G internet capability access to all areas. This improves connectivity via dedicated app
- Forward Guest cabin -32" HD LED TV, Naim Uniti Atom audio system with Bluetooth, multi-zone streaming capability and dedicated app. Blu-ray CD/DVD player. Paired with Focal speakers (2) and subwoofer
- Starboard cabin – 28" HD LED TV, Naim Uniti Atom audio system with Bluetooth, multi-zone streaming capability and dedicated app. Blu-ray CD/DVD player. Paired with Focal speakers (2)
- Port cabin – 22" HD LED TV, Naim Uniti Atom audio system with Bluetooth, multi-zone streaming capability and dedicated app. Blu-ray CD/DVD player. Paired with Focal speakers (2)
- Crew cabin – 22" HD LED TV, Naim Uniti Atom audio system with Bluetooth, multi-zone streaming capability and dedicated app. Blu-ray CD/DVD player. Paired with Focal speakers (2)
- Foredeck seating walk-through area – Naim audio system with Bluetooth, multi-zone streaming capability and dedicated app. Paired with 2 Bowers & Wilkins waterproof speakers (no HDMI connectivity)
- Four Raymarine Axiom XL16 (15.6") colour multifunction displays (i.e. 2 at each helm position) in place of standard
- Raymarine Magnum HD colour radar, 12kW pedestal with 48" open array scanner in place of standard 4kW
- Raymarine remote control keypad (RMK-10) at upper and lower helms
- Raymarine 7" repeater display in crew cabin
- European version plotter
- Raymarine AIS 700 Class B transponder interfaced with chartplotter
- International VHF
- Raymarine night/day CCTV camera in engine room and one on aft point of cockpit overhang to allow viewing of platform – connected and viewed from both upper and lower Raymarine screens
- Airconditioning/heating reverse cycle (186,000BTU) suitable for temperatures to 40°C (tropical) is fitted as standard With controls in all cabins and outlets in all areas (including bathrooms)
- Mosquito screens for portlights
- Exterior covers – Grey canvas
- Bimini top – Grey canvas
- Additional charge for Bimini top to have dimmable LED overhead lighting (switched from console)
- Additional charge for Bimini to be electro-hydraulic powered
- White vinyl windscreen covers in place of standard black mesh
- Foredeck sun awning with carbon fibre poles (awning to match cockpit/sportbridge covers)
- 8 place setting of China, Cutlery & Glasses
- Compass adjuster to swing both compasses
- Tender: Williams 435SJ – includes launch & load into garage; upholstery grey to match mother vessel; deck white; helm white; hull white; tubes standard off white and neptune grey; Milan upholstery; Led deck lights; Bimini in grey; protective cover in grey;
- Fortress anchor(31KGS) for 80" yacht + Bag for FX125 for easy storage+ rope
- 12 USB sockets
- Sliding helm table (as per 30 M) at forward port helm seating area;
- Galley worktop to be in organic White quartz
- All bathroom worktops and floors to be Carrara White
- Wash and Go 300 System

2021 PRINCESS S78

+33 6 40 61 88 46 

m.st.pierre@princessyachtsmonaco.com

Follow Princess Yachts Monaco

