

PRINCESS S78



SPECIFICATIONS

Posizione	United Kingdom, Plymouth
Lunghezza	24.66 m
Larghezza	5.76 m
Pescaggio	1.77 m
Peso	53.7 tonnes
Capacità carburante	6000 l
Capacità acqua	1350 l

Cabine	4+1
Berths	8+2
Motorizzazione	Twin MAN V12
Max potenza	2 x 1900 hp
Velocità	37-39 +
Prezzo	Prezzo alla richiesta

EQUIPMENT

DECK FITTINGS

Teak-laid transom platform, cockpit deck, sportbridge, sportbridge stairway, side decks and foredeck walkthrough

Reversible electric anchor winch with foredeck and helm position controls

Self-stowing 50kg/110lbs Delta anchor with 100m of chain

Twin electric sternline mooring winches

Storage lockers for rope, fenders and foredeck sunbed cushions

Foredeck seating and sunbathing area (sunbed converts to aft facing seating)

Stainless steel cleats, fairleads and handrails

LED deck level lighting

Freshwater deck/anchor wash

COCKPIT

Configurable seating area with teak folding table

Twin sunbeds aft with lazarette and garage with electro-hydraulic door and tender launch system with electric winch below (4.45m tender)

Central transom gate leading to bathing platform with electro-hydraulic raise/lower mechanism, foldaway swimming ladder and hot and cold transom hower

Naim audio system with waterproof speakers (2)

Lockable gas strut assisted hatch to engine room

Transom access to crew cabin/engine room

Liferaft storage

Remote control 3.6m telescopic passarelle with folding handrail

Cockpit cover

SPORTBRIDGE

Helm position with powered raise/lower console, repeat navigation equipment including radar/ chartplotter and engine instrumentation

Twin adjustable helm seats

Large free standing seating area with table

L-shaped seating to port and starboard (converts to sunpad)

Wetbar including sink with electric barbecue and top loading coolbox

Naim audio system with waterproof speakers (2)

LOWER HELM POSITION

Twin adjustable helm seats

Helmsman's door to side deck and electric opening window to port

L-shaped seating to port

Full engine instrumentation including fuel gauges, exhaust temperature, fuel contamination alarms and rudder position indicator

Navigation system including colour radar, GPS and chartplotter (2 displays), VHF/RT, speed and distance log, echo sounder with alarm, autopilot and high speed magnetic compass

Controls for bow thruster, windscreen wipers, bilge pump and trim tabs (with indicators)

Chart storage

24v and 240v control panel

Red night lighting

Toughened glass screen (clear for night vision)

DECK SALOON

Stainless steel framed sliding doors to aft cockpit with integrated opening window aft of galley

U-shaped seating area with two-seater chaise and coffee table

Entertainment centre incorporating 55" UHD LED TV on electric raise/lower mechanism with Naim audio system and ceiling mounted speakers (2)

Sideboard unit with bottle and glass storage and refrigerator

L-shaped dining area with glass table

Skylights with reflecto-glass and sliding blinds (option of powered opening roof)

GALLEY

4-zone induction hob

Combination microwave/convection oven with grill

Twin stainless steel sinks with mixer tap

Full height refrigerator/deep freezer

Icemaker

Dishwasher

Storage lockers, cupboards and drawers

Electrically operated sliding glass partition from saloon

ACCOMMODATION

All cabins and bathrooms feature opening portholes and air conditioning outlets

All cabins feature 220/240v power points

All mattresses pocket sprung (excluding crew)

All bathrooms feature full shower stalls, electric freshwater toilets, extractor fan and 240v shaver points

OWNER'S STATEROOM

Large double bed with drawers below
Dressing area with wardrobes with hanging and drawer storage
Dressing table with chair
Sofa
Built in safe
40" UHD LED TV, DVD Blu-ray with Naim audio system with speakers (2) and subwoofer
En suite bathroom
Dedicated access with lobby area
Combination washer/dryer and storage area is fitted in the owner's stateroom lobby area with the option of fitting separate washing machine and tumble dryer

FORWARD GUEST CABIN

Large double bed with drawers below
Wardrobe with shelves
Dressing table with stool
Naim audio system
Deck hatch
En suite bathroom

STARBOARD GUEST CABIN

Large double bed with drawers (with option of powered sliding berths)
Wardrobe with shelves
Dressing table with stool
En suite bathroom with day access

PORT GUEST CABIN

Two single beds with drawers below (with the option of powered conversion to double)
Wardrobe with shelves
Storage lockers
En suite bathroom

CREW CABIN

Two single beds, wardrobe and storage lockers
Storage unit with space for optional fridge
Bathroom with shower, electric freshwater toilet and washbasin
Access to engine room

INTERIOR FINISH

Furniture in Rovere Oak with satin or high gloss finish. Walnut or Alba Oak available as an option
--

Solid surface worktops and tiled floors in all guest bathrooms
Galley worktops in choice of granite or quartz
Choice of high quality carpet and upholstery fabric from extensive range
Curtains, blinds or sunscreens to all windows and portholes
Timber-laid galley, saloon and helm floors
Crew cabin fitted with non slip safety flooring

POWER AND DRIVE SYSTEMS

5-bladed propellers in nickel aluminium bronze
Bow thruster (240kgf/529lbf)
Power-assisted electro-hydraulic steering system with hydraulic back-up
Electronic engine and gear shift controls
Dripless shaft seals
Engine room extractor fan with electronic time delay

ELECTRICAL SYSTEMS

24 Volt:

4 x heavy duty batteries for engine starting
6 x heavy duty auxilliary batteries
2 x 60-amp battery charger charges both banks of batteries via an automatic switch charging system
Remote battery master switches with control switch at main panel
LED lighting throughout

220/240 Volt:

22.5kW diesel generator in own starting battery and specially silenced exhaust
2 x 63-amp shore support inlet
Earth leakage safety trip, polarity check system, circuit breakers on all circuits
Power points in all areas

FUEL SYSTEM

Twin fuel tanks (in NS8 marine grade alloy) with interconnection system giving 1,320 gal/1,585 US gal/6,000l capacity
Fuel fillers on port and starboard side decks
High capacity duplex fuel filters/water traps with audible and visible fuel contamination warning system
Remote fuel cocks in cockpit locker

WATER SYSTEM

253 gal/304 US gal/1,150l plus 44 gal/53 US gal/200l hot water calorifier, heated by engine and 240v immersion heater
Water level gauge

Deck filler
Electric freshwater WC system with 99 gal/119 US gal/450l holding tank
AIR CONDITIONING
156,000Btu chilled water system with outlets in all accommodation areas and incorporating reverse cycle heating with linked windscreen demist system. Suitable for tropical conditions (40°C)
FIRE EXTINGUISHERS
Automatic/manual override fire extinguishers in engine room with warning system at both helm positions
Hand-operated fire extinguishers in all cabins, galley and lower helm (7)
BILGE PUMPS

Automatic electric bilge pumps (7)
High-capacity manual bilge pump with valve system and suction points in same areas
OTHER STANDARD EQUIPMENT
Set of cutlery, crockery and glasses (8)
Set of towels (8 large, 8 small)
Ensign staff
Fenders (8) and wraps (4)
First aid kit
Set of manuals
Quilted bedspreads supplied to all cabins (except crew)

EXTERIOR

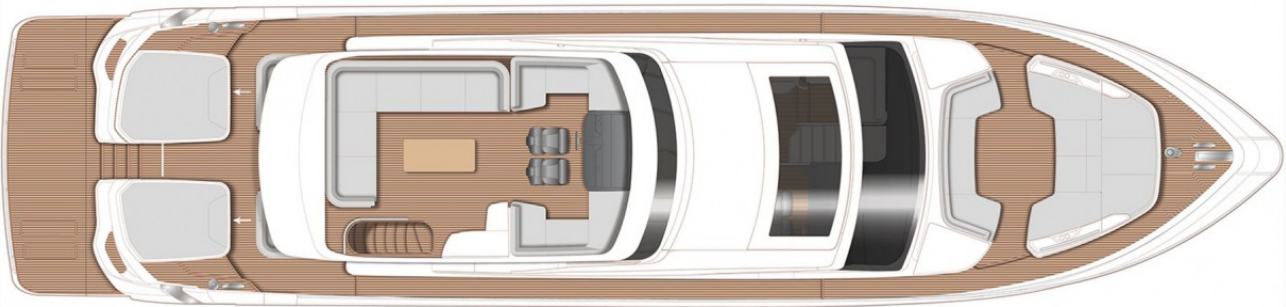


Yachts on the commission of Princess Yacht Monaco. The Company is not responsible for the accuracy of the information provided by the Shipowner (images used, yacht specifications, parameters, engine performance, legal design issues). The operating time of the engines is indicated at the time of preparation of the information and may change during further operation. The need for an inspection remains at the discretion of the Buyer. Exact parameters and characteristics can be specified in the contract of sale. Additional information is available from the manager on request.

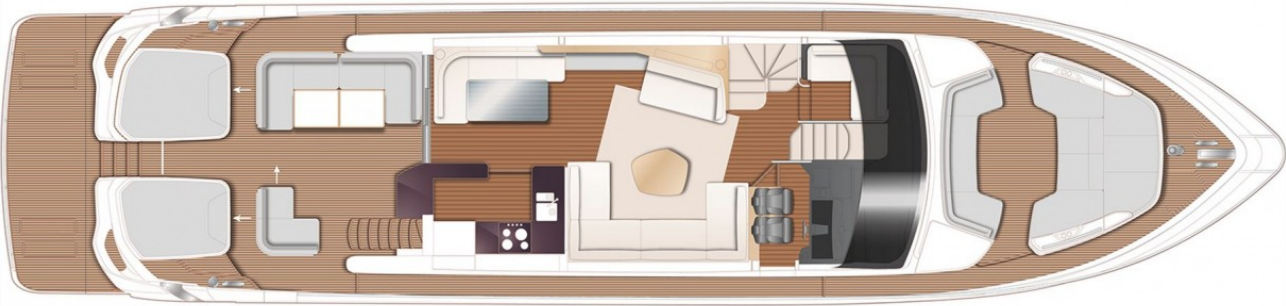
INTERIOR



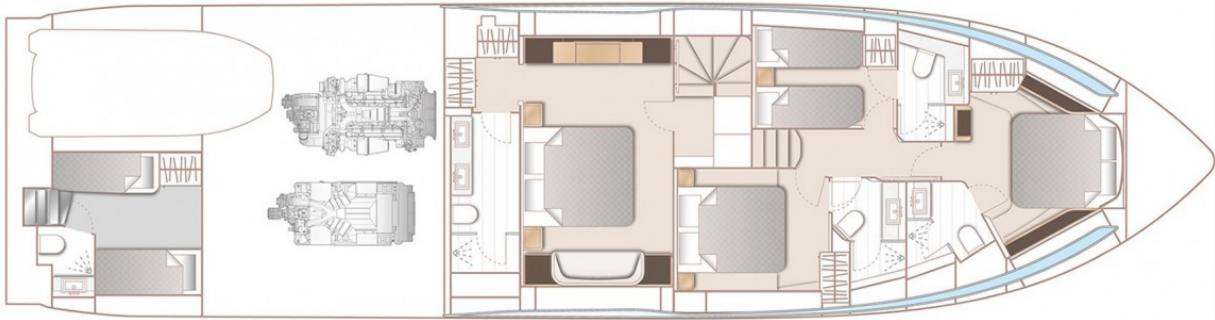
LAYOUTS



SPORTBRIDGE



MAIN DECK



LOWER DECK

Yachts on the commission of Princess Yacht Monaco. The Company is not responsible for the accuracy of the information provided by the Shipowner (images used, yacht specifications, parameters, engine performance, legal design issues). The operating time of the engines is indicated at the time of preparation of the information and may change during further operation. The need for an inspection remains at the discretion of the Buyer. Exact parameters and characteristics can be specified in the contract of sale. Additional information is available from the manager on request.