

PRINCESS V48 OPEN



BROKERAGE

HIGHLIGHTS

/ 120 ENGINE HOURS
/ VOLVO JOYSTICK
/ YACHT-CONTROLLER

/ SEAKEEPER 6
/ GENERATOR 11 KW
/ BOWTHRUSTER

SPECIFICATIONS

Posizione	Monaco, Monaco	Capacità acqua	364 l
Anno	2017	Cabine	2
Lunghezza	14.07 m	Motorizzazione	Volvo IPS 600
Larghezza	4.11 m	Max potenza	2 x 435 hp
Pescaggio	1.14 m	Velocità	35 +
Peso	14.2 tonnes	Engine hours	120 m/h
Capacità carburante	1325 l	Prezzo	825 000 € (inc VAT)

EQUIPMENT

- Hull White with dark grey waterline & black antifouling
- Twin Volvo IPS 600 (2 x 435 hp)
- Seakeeper 6 (2nd Gen.)
- Volvo Joystick control
- Additional "Yacht Controller" installed
- Bowthruster
- Rovere Oak interior wood Satin finish
- Scissor berths to forward cabin (in place of double)
- Lower dinette table to convert to double berth with telescopic table legs and infill cushion
- Passerelle (2.9m telescopic letterbox type)
- Teak to side decks and foredeck
- Wetbar with BBQ and refrigerator
- Stainless steel anchor in place of standard (20kg)
- Stainless steel anchor chain (50M in place of standard 40m galvanised chain)
- ONAN 11 Kw /50Hz generator (with hydrohush exhaust system)
- Dishwasher in galley (6 place drawer type)
- Lower Saloon - LED TV + Fusion Radio/DVD/MP3 player with Bluetooth facility
- Owner's stateroom - LED TV + Fusion Radio/DVD/MP3 player with Bluetooth facility
- Forward Guest cabin - LED TV + Fusion Radio/DVD/MP3 player with Bluetooth facility
- Raymarine Chartplotter/GPS with external GPS and 15.4" brilliant color multifunction display
- Raymarine HD Rdar
- International VHF
- Reverse cycle AIRCONDITIONING / HEATING : (32,000 btu) tropical specification up to 40°C
- Electric discharge toilets
- Foredeck sunbed cushions
- Sun awning with telescopic stainless steel support

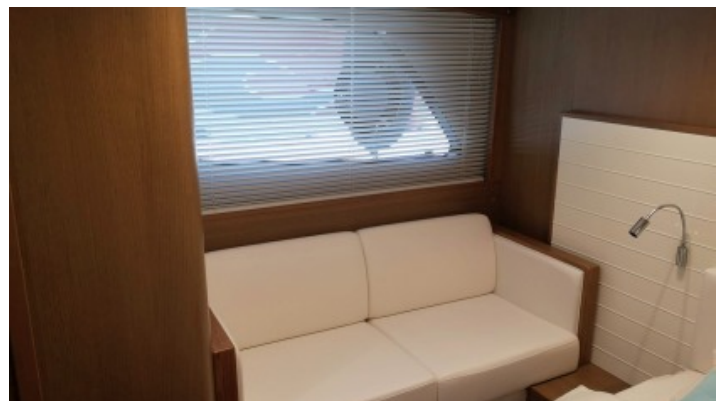
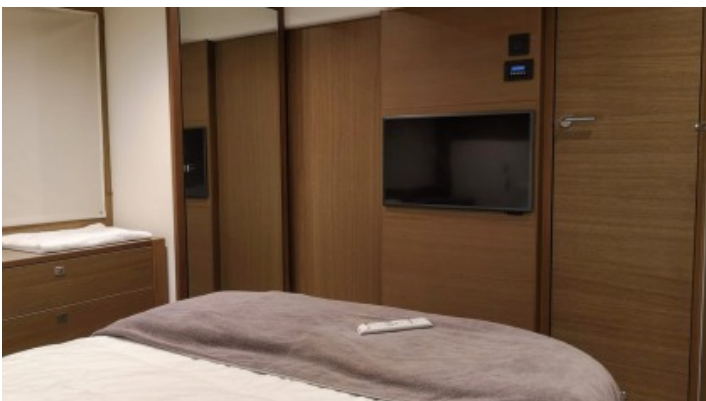
MOTORIZZAZIONE

Volvo IPS-600 (2 x 435 hp)

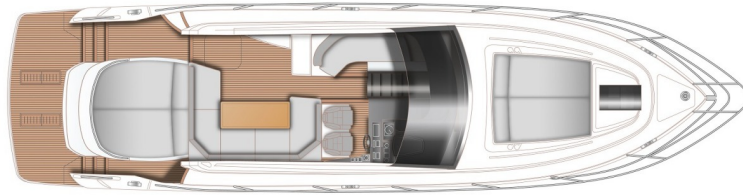
EXTERIOR



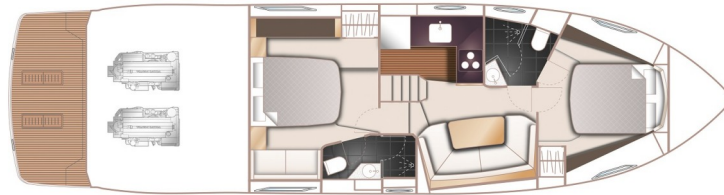
INTERIOR



LAYOUTS



MAIN DECK



LOWER DECK
