

PRINCESS V60 (023)



SOLD

HIGHLIGHTS

/ ALL-NEW MODEL

/ SPACIOUS COCKPIT

/ INCREDIBLY ELEGANT
LINES

/ STRONG SPECIFICATION

SPECIFICATIONS

Posizione	Monaco	Capacità acqua	603 l
Anno	2019	Cabine	3+1
Lunghezza	19.17 m	Berths	6+2
Larghezza	4.87 m	Motorizzazione	2 x VOLVO D13-900
Pescaggio	1.5 m	Max potenza	900 hp
Peso	27.2 tonnes	Prezzo	Prezzo alla richiesta
Capacità carburante	3250 l		

















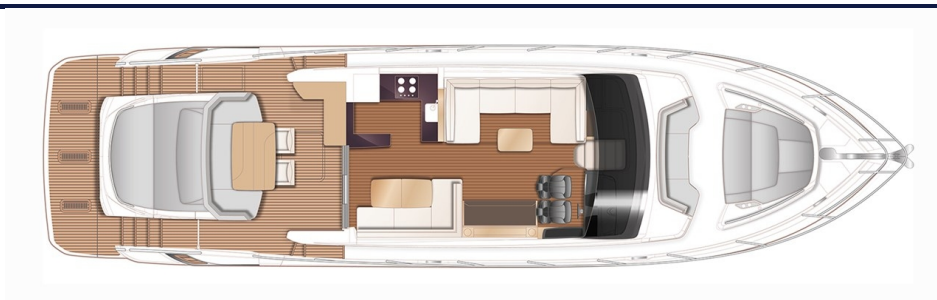




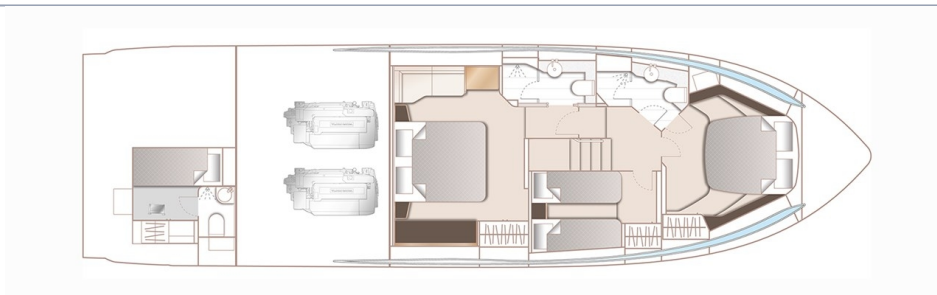




LAYOUTS



MAIN DECK



LOWER DECK

EQUIPMENT

Exterior Styling Include:

Hull White with dark grey waterline & black antifouling

Generator

Walnut interior wood satin finish (galley, dinette, saloon and helm floor is walnut as standard)

Audio Visual & Communications

Crew Cabin fit out (single berth with separate WC and shower)

Starboard cabin to have double berth conversion with powered sliding mechanism on inboard berth

MOTORIZZAZIONE

2 x VOLVO D13-900 (2 x 900 hp)

PRINCESS V60 (023)



+377 6 40 62 55 44 

c.oddone@princessyachtsmonaco.com

Follow Princess Yachts Monaco

