

PRINCESS V60 (023)



STOCK

HIGHLIGHTS

/ ALL-NEW MODEL
/ SPACIOUS COCKPIT

/ INCREDIBLY ELEGANT LINES
/ STRONG SPECIFICATION

SPECIFICATIONS

Posizione	Monaco
Anno	2019
Lunghezza	19.17 m
Larghezza	4.87 m
Pescaggio	1.5 m
Peso	27.2 tonnes
Capacità carburante	3250 l

Capacità acqua	603 l
Cabine	3+1
Berths	6+2
Motorizzazione	2 x VOLVO D13-900
Max potenza	900 hp
Engine hours	Contact seller
Prezzo	1 765 451 € (ex VAT)

EQUIPMENT

HULL COLOUR

Hull White with dark grey waterline & black antifouling

INTERIOR FURNITURE

Walnut interior wood satin finish (galley, dinette, saloon and helm floor is walnut as standard)

LAYOUT

Crew Cabin fit out (single berth with separate WC and shower)

Starboard cabin to have double berth conversion with powered sliding mechanism on inboard berth

STYLING

V Class quilting detail to Nero Leather Helam Seats with panelling in Destiny Carob and contrast piping in

Gabardine Novasued Madison Grey

Exterior Styling Include:

Canopy styling blade to be sprayed in unque V Class paint colour

Canopy sprayed in V Class Grey metallic in addition to standard spray detail

Cockpit seat backrest surround sprayed in V Class Grey metallic

Teak step noisings upgrade (to include transom and steps to side deck)

Teak laid side deck, foredeck and coach walk through

Exterior lighting upgrade package (includes additional deck level lights (11) to illuminate side deck and foredeck area and deck level spot lights (2) on garage door to illuminate bathing platform deck)

Underwater lighting to transom (4)

Underwater lighting to hull sides (x 2 per side)

Teak foredeck coffee table

Dedon Seax folding director's armchairs x 2 for cockpit dining (frame in black finish with wooden arms

Textile in Sail Taupe) in lieu of standard

Foredeck sunbed cushions and teak adjustable headrests

All exterior upholstery in V Class styling – Met Ice with Met Sterling contrast panelling and piping

All exterior cushions in reticulated foram (Please note that improves cushion drainage)

Foredeck carbon fibre sun awning in Anthracite grey

Tonneau covers in grey

DECK HARDWARE

Electric stern rope handling winches (2)

Electro-hydraulic telescopic passerelle (3,5m) with automatic handrails

Passerelle to be wired via the master switch in addition to its own switch

Second station controls in cockpit (engine controls and emergency stops, thruster controls)

Electrically operated sun awning to aft end of cockpit

Additional 20m of 9,5 mm anchor chain to give a total of 60 meters

Generator

Onan 17,5 kw generator in place of standard

ELECTRICAL

Continental 220v/240v sockets

Dishwasher (drawer type) fitted in galley

Icemaker fitted in saloon

Fit heated towel rail in master and forward bathrooms

Combination washer/dryer fitted in Master Stateroom lobby below companionway stairs

Stern docking lights fitted to garage door overhang

Audio Visual & Communications

Deck Saloon – Harman Kardon 5.1 Blu-ray system (with Bluetooth connectivity) and Anthony Gallo satellite speakers

Owners stateroom – Harman Kardon 2.1 Blu-ray system with Bluetooth connectivity and KEF speakers in place of Fusion MS-AV755

Cockpit – waterproof speakers with local control"

NAVIGATION

Raymarine Super HD colour radar with 48" 4kw scanner

European version plotter

Raymarine AIS Class B transponder interfaced with chartplotter and fitted with active AIS 100 aerial splitter

International VHF

AIRCONDITIONING

Airconditioning/heating reverse cycle (82,000 BTU) suitable for temperatures to 40 C (tropical) with controls in all cabins and outlets in all areas

Aft cabin air-conditioning

HEATING/DEMIST

Windscreen demist system using warm air heater powered from calorifer mosquito screens for all opening port lights

HOLDING TANK / TOILETS

SEA DELIVERY

Electric discharge

Compass adjuster to swing both compasses

MOTORIZZAZIONE

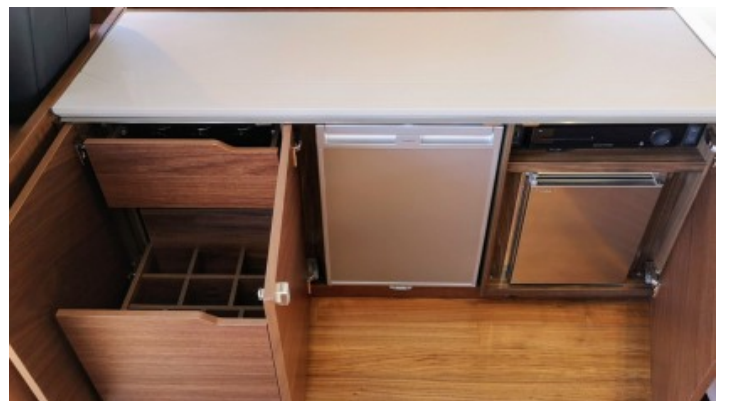
2 x VOLVO D13-900 (2 x 900 hp)

EXTERIOR

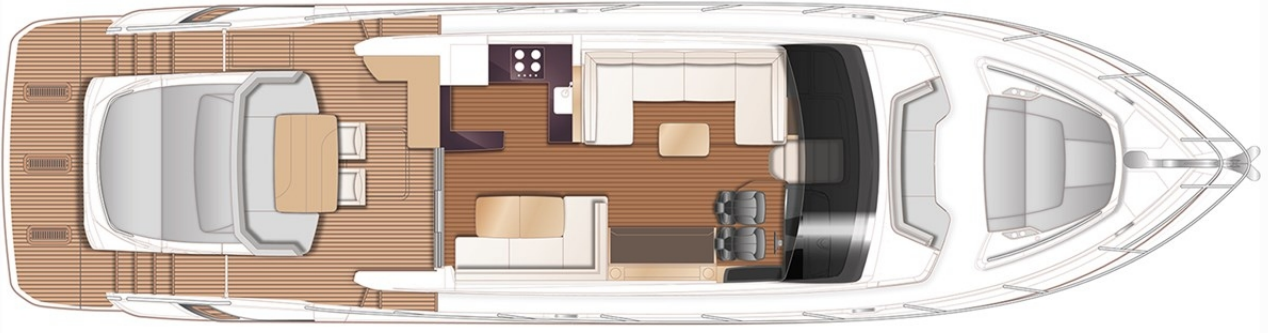


Yachts on the commission of Princess Yacht Monaco. The Company is not responsible for the accuracy of the information provided by the Shipowner (images used, yacht specifications, parameters, engine performance, legal design issues). The operating time of the engines is indicated at the time of preparation of the information and may change during further operation. The need for an inspection remains at the discretion of the Buyer. Exact parameters and characteristics can be specified in the contract of sale. Additional information is available from the manager on request.

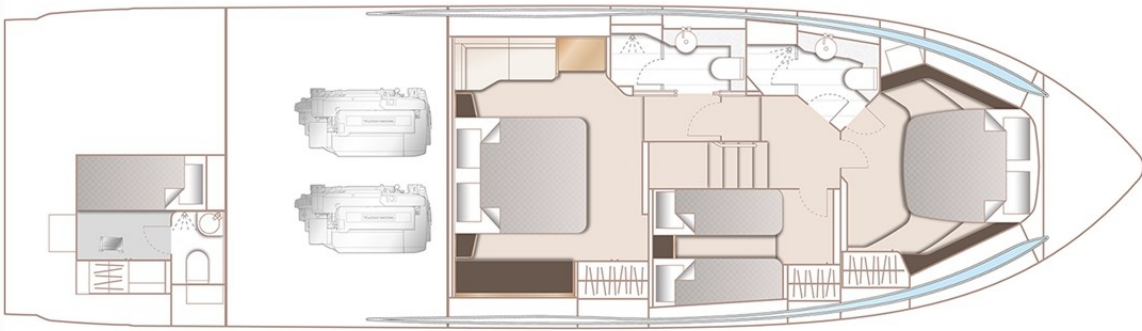
INTERIOR



LAYOUTS



MAIN DECK



LOWER DECK
