

## PRINCESS X95



STOCK

## HIGHLIGHTS

/ AVAILABLE IN STOCK

## SPECIFICATIONS

Posizione	After request	Capacità acqua	1805 l
Anno	2025	Cabine	4
Lunghezza	21.11 m	Motorizzazione	2 x MAN V12
Larghezza	6.71 m	Max potenza	2 x 1900 hp
Pescaggio	2.03 m	Velocità	26 knots
Peso	104 tonnes	Engine hours	Contact seller
Capacità carburante	13816 l	Prezzo	10 232 200 € (ex VAT)

















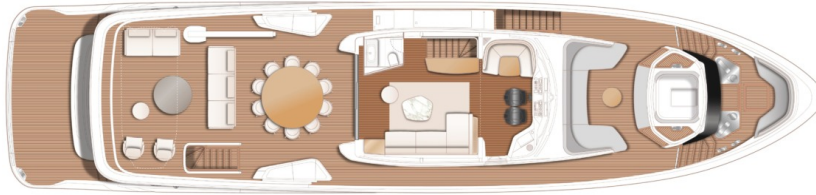






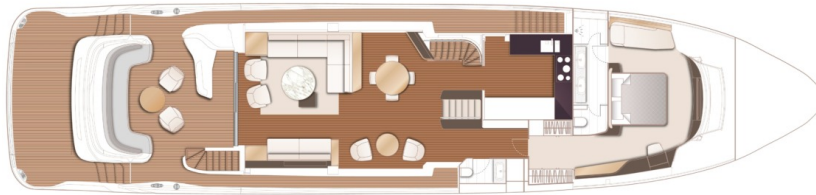
## LAYOUTS

---



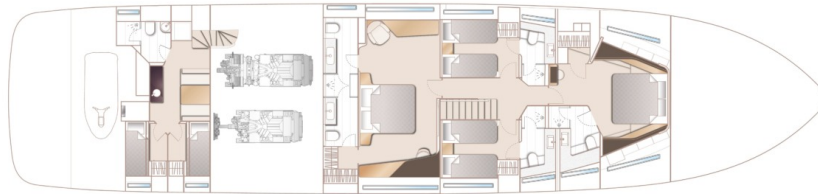
FLYBRIDGE

---



MAIN DECK

---



LOWER DECK

---

## EQUIPMENT

---

### ENGINES & DRIVE

Wing station controls on starboard side of flybridge coaming (engine controls, thruster controls, follow on tiller (steering input control) and engine emergency stops)

---

### STABILISATION

Sleipner Hydraulic system (consisting of separate engine driven hydraulic pumps on each engine with cross connections allowing any system to be supplied with hydraulic power from either engine) and incorporating

SPS93/VF1950 vector fin stabiliser system.  
When underway fins are driven by engine powered hydraulic motors or by a generator powered electric motor when the main engines are turned off

---

## INTERIOR FURNITURE

Walnut interior wood – satin finish (standard layout – open galley and forward dining floors are V groove planked Walnut as standard. Skylounge (with inlaid rug) and wheelhouse floors are in V groove planked Walnut as standard)

---

Main deck Saloon and forward lounge/optional bar area floors to be in V groove planked wood with inlaid rug\* in aft saloon area (wood type same as standard open galley and dining area)

---

## DECK HARDWARE

Side entry gates to aft port & starboard side decks in addition to standard passerelle

---

Mooring package with leather fender saddles (x8 accommodates one side of the hull)

---

Cockpit servery unit, incorporating drawer fridge, sink, top loading coolbox and storage

---

Twin stainless-steel kedge anchors with 100m of 14mm galvanised chain in place of standard

---

An additional 2 x 50 metres of 14mm anchor chain to make 150 metres on each side (galvanised)

---

Flybridge port side bar unit included in outboard sideboard with 2 electric griddle type barbeques, drawer refrigerator, sink and waste bin

---

Flybridge starboard unit included in outboard sideboard to be fitted with top loading cool box and icemaker

---

Electric aft awning fitted to upper deck

---

Plug in carbon pole transom shower and deck socket to bathing platform

---

Flybridge port side GRP storage box (fits between skylounge and outboard rails)

---

## GENERATOR

Upgrade to two ONAN 50 kW/50Hz generators to be fitted in place of standard

---

## ELECTRICAL

Multi sockets, in place of standard sockets (throughout craft) \* please note that as these sockets will take various plug types, it is the customers' responsibility to ensure that the appliance being plugged in matches the boats operating voltage. PYL cannot be held liable for equipment damage that results from a

Miele Professional washing machine and tumble dryer fitted in crew area (50Hz)

---

Underwater transom lights (4 Lumishore THX 803 full colour, interfaced with Radar/Chartplotter MFD's)

---

Underwater lighting to aft hull sides (8

mismatch of voltages

---

AGM 90Ah batteries in place of standard (for start, domestic and generator batteries)

---

Wine cooler (34 bottles) fitted in saloon sideboard

---

High impact mini dome anchor pocket camera (one for each anchor)

---

Additional CCTV cameras (each) - please specify location (maximum of 5 cameras in addition to the 3 standard cameras as below) (Note: Standard CCTV system includes 2x fixed cameras in engine room and 1x fixed pan/tilt aft cockpit camera)

---

Spot Zero combined watermaker and water purification system (190l/hr) - Purifies seawater and dockside water by removing dissolved solids

---

Underfloor heating in bathrooms (MAIN DECK MASTER, LOWER DECK MASTER, FORWARD CABINS)

---

Lumishore THX 803 full colour, interfaced with Radar/Chartplotter MFD's - 4 per side)

---

Electric sheer roller blind in place of manual in Lower deck Master stateroom outboard of standard electric roman blind

---

Forward Cabin - Additional electric sheer roller blind to outboard of standard electric roman blind

---

Electric curtains to aft patio and port and starboard full height windows in place of standard

---

Electric curtains to Sky lounge aft patio door in place of standard

---

## AUDIO VISUAL & COMMUNICATIONS

Crew mess/ Optional Beach Club (when fitted) TV & Audio Package 32" LED TV, Naim Uniti Atom audio system with Bluetooth, multizone streaming\* capability and dedicated app. Paired with Focal speakers

---

PREMIUM AUDIO UPGRADE : (does not include Crew mess/ optional Beach Club - please select separate option) Incorporates:

Deck Saloon - 65" LED TV on a power lift. Naim Uniti Star audio system - Stream your music in high-resolution, play, backup your CDs, store and access your music library or tune in to your favourite radio stations via DAB & FM radio.

Access a world of music with a host of streaming\* and media sources with intuitive app enabled features. Paired with upgraded Focal speakers and subwoofer.

Owner's Stateroom - 55" LED TV, Naim Uniti Atom audio system with Bluetooth, multi-zone streaming\* capability and dedicated app. Paired with upgraded Focal speakers and subwoofer.

Dummy KVH dome (89cm) x 2

---

Forward Stateroom 43' LED TV, Naim Uniti Atom audio system with Bluetooth, multizone streaming\* capability and dedicated app. Paired with upgraded Focal speakers and subwoofer.

Starboard guest cabin 24' LED TV, Naim Uniti Atom audio system with Bluetooth, multizone streaming\* capability and dedicated app. Paired with Focal speakers

Port guest cabin 24' LED TV, Naim Uniti Atom audio system with Bluetooth, multizone streaming\* capability and dedicated app. Paired with Focal speakers

---

## NAVIGATION

Raymarine Cyclone Pro Radar, 110W pedestal with 6' open array scanner in place of standard

Raymarine AIS Class B transponder interfaced with chartplotters

---

Additional Raymarine Cyclone Radar, 55W pedestal with 4' open array scanner

International VHF

---

European version plotter

---

## MOSQUITO SCREENS

Mosquito screens for portlights

---

## EXTERIOR UPHOLSTERY / CANVAS / COVERS

Reticulated foam to all standard exterior cockpit and foredeck fixed furniture (loose furniture items on the sundeck and loose cockpit chairs, if selected, are not included)

---

Cockpit privacy screen

---

## SHIPPING

Handover Preparation Pack

---

## SEA DELIVERY

FUEL: Fill with fuel (13,400 litres)

---

Supply 5 litre container of engine oil

---

Ecoworks for Princess – complete boat, sustainable cleaning solution. Including all concentrated products – washdown, engine, rib, teak deck, bilge, glass, all surface, laundry,

fabric, washroom & heads cleaners, sanitiser,  
fog buster, wood & wax varnish, washingup  
liquid, trigger spray bottles (x4) and jute  
storage bag

---



## PRINCESS X95

+33 6 40 61 88 46 

[m.st.pierre@princessyachtsmonaco.com](mailto:m.st.pierre@princessyachtsmonaco.com)

---

Follow Princess Yachts Monaco

